

2021 STRAIT-HEFTE

Tried & True

OCTOBER 15-16, 2021

PRODUCTION SALE

320 FM 3059 | STREETMAN, TEXAS



STRAIT
Ranches



HEFTE RANCH



Welcome



Dear Friends and Fellow Cattle Producers,

We are excited to be hosting the Fourth Annual Strait-Hefte Tried & True Production Sale along with Hefte Ranch. We are so appreciative of the support this sale and our Santa Gertrudis genetics have received. This year's sale offering is heavily influenced by LJV Mason, SR Genesis 75/3, KR Catalyst 531/15, and SR Arkoma 30/0 as in prior years, but you will also find many of our young sires represented like SR MPact 30/F2 (co-owned with Vesper Ranch) and SR 68/F2. Almost all of the females in this year's offering have been AI'd to leading Santa Gertrudis sires and cleaned up with our proven bulls as well as some of our newest bulls like Red Doc Rapid Progress 8046 and Wendt 9386. We believe this year's bull offering is our most complete group produced to date. We hope that you find a bull that meets your breeding objectives in the offering.

Our family has been blessed with the opportunity to raise Santa Gertrudis cattle for 70 years in South Texas. We started using Santa Gertrudis genetics in our commercial cattle operation in the 1950's and began transitioning to a seedstock operation in the 1990's. 2021 has brought many changes to our cattle operation. In early 2021, we moved our headquarters and the majority of our cattle operation to Streetman, Texas. Being rooted in South Texas, this was not an easy decision or transition but one that we felt was necessary to continue the legacy of Santa Gertrudis genetics that we have worked so hard to continually improve and that we are so passionate about. We are very excited about our future in Streetman and the opportunities for growth that we feel are possible here.

As many of you know, in August we lost our husband, father, grandfather and the man that built this operation and made it what it is today. Dad was a revered cattleman that left a lasting legacy of superior genetic improvement, purposeful stewardship of the land, cattle and relationships and a strong work ethic that was hard to match. We have big boots to fill but we are committed to continuing Dad's legacy. Dad was very proud of the offering we have this year and would want the cattle to speak for themselves. Words cannot express the gratitude we have for all the prayers, love and support we have received the last month. It has been a very busy month preparing for the sale and we could not have done it without the help from friends and family. A big thank you to the Hefte Ranch Family, Kade Thigpen and Richard Hood for all of your additional help this year. We are forever thankful for all of the assistance and support we have received.

We invite you to join us on October 15th and 16th in Streetman for the sale. We are also more than willing to show you our sale cattle prior to this date if you are interested. Online bidding will be available on sale day via DVAAuction.com. If you have any questions about our offering, please feel free to call Yancey (972.841.0989), Callie (210.837.1199) or Richard Hood with American Marketing Services (979.224.6150).

We are so very thankful for each of you, for health, family, friendships, recent rains, and the power of hard work, dedication and Santa Gertrudis genetics.

Many thanks,
The Y.N. Strait Family



The Y. N. Strait Family

Cynthia, Yancey, Heather,
Avery, Arden, Callie, Jake,
Piper and Nellie



Dear Friends,

This year's sale will be different. Not because it is in a new location, but because we are without our beloved friend, mentor and partner, Y.N. Strait. Over the past four years, and even many years before that, we were blessed to have him as a role model and there is huge empty spot in our hearts. We do know that Y.N. would want us to keep on "keeping on", so we are following the Strait Family's example of honoring Y.N.'s legacy by continuing to work hard to produce the best Santa Gertrudis cattle in the world. We also intend to honor him by emulating the example he set as a person of integrity, family values, authentic character and kindness.

We are pleased to offer our fourth set of Tried & True consignments. These bulls and females are some of our best yet. Please feel free to give us a call to discuss any that catch your eye. We are always happy to talk cattle. We look forward to seeing everyone in Streetman, Texas, but we certainly understand if you cannot attend in person and would be happy to send additional information if needed.

We also want to thank you all for your continued support and friendship, and the Strait Family for all they have done for the Santa Gertrudis breed. We do know that Y.N.'s legacy and presence will be felt for many years to come.

Truly,
The Hefte Ranch Family



Petty & Hefte Families

Scott, Harper, Kathryn
& Carson Petty

Mary Tom & Kenneth Hefte
Kenneth Tom & Lauri Hefte



The Thigpen Family

Kade, Camille,
Kelley & Emerson

Schedule of Events

FRIDAY, OCTOBER 15, 2021

2:00 PM Cattle Viewing
6:30 PM Dinner/Entertainment

SATURDAY, OCTOBER 16, 2021

8:00 AM Cattle Viewing
8:00-10:00 AM Breakfast
11:00 AM **TRIED AND TRUE
PRODUCTION SALE**

Lunch will be served after sale.

CONTACT INFORMATION

Strait Ranches:

Yancey Strait, 972.841.0989
Callie Loden, 210.837.1199

Hefte Ranch:

Kathryn Hefte, 210.414.2493
Kade Thigpen, 830.426.1366
K.T. Hefte, 361.813.4937

AUCTIONEER

Leo Casas

LOAD OUT

Load out to begin after completion of the sale. The purchased animal is the sole responsibility of the buyer, but the sellers agree to maintain and care for all animals through Monday, October 18, 2021 at no additional cost. The seller is not responsible for any injury or loss after the animal is sold. If other arrangements are needed then those must be agreed to before the sale.

Docility Score Descriptions

Score	Description
1	Very Comfortable- Bull stands quietly when evaluated.
2	Comfortable- Bull slowly walks when evaluated.
3	Uncomfortable- Bull walks faster when evaluated.
4	Nervous- Bull desires to return to herd when evaluated.
5	Very Nervous- Bull is aggressive when evaluated.

**The above scores are presented as an additional tool to assist in the selection process, but all bulls may act differently in new/different situations/locations.

SALE MANAGED BY American Marketing Services



Mark Cowan
903.495.4522, markc@amscattle.com
Trey Kirkpatrick
979.324.5518, treyk@amscattle.com
Richard Hood
979.224.6150, richardh@amscattle.com

TRANSPORTATION

We have arranged professional hauling services to be available sale day for buyers needing animal transportation. Central ranch drop off locations across the eastern United States and Texas can be coordinated. If you have any questions or need transportation assistance please contact Richard Hood at 979.224.6150. Darrell Pitchford, 903.388.2288

HEALTH PAPERS

Health papers for interstate shipment within United States will be provided for all animals.

SIGHT UNSEEN PURCHASES

All purchases made on order or through the internet are 100% satisfaction guaranteed upon delivery.

HOTEL ACCOMMODATIONS

Code for listed hotels: *Strait-Hefte Tried & True LaQuinta*

Fairfield, TX | 903.389.7441

Holiday Inn Express & Suites

Fairfield, TX | 903.389.2300

La Quinta

Corsicana, TX | 903.874.6292

Holiday Inn Express & Suites

Corsicana, TX | 903.874.7440

Hampton Inn & Suites

Corsicana, TX | 903.872.2238

This sale will be broadcast live on the internet.

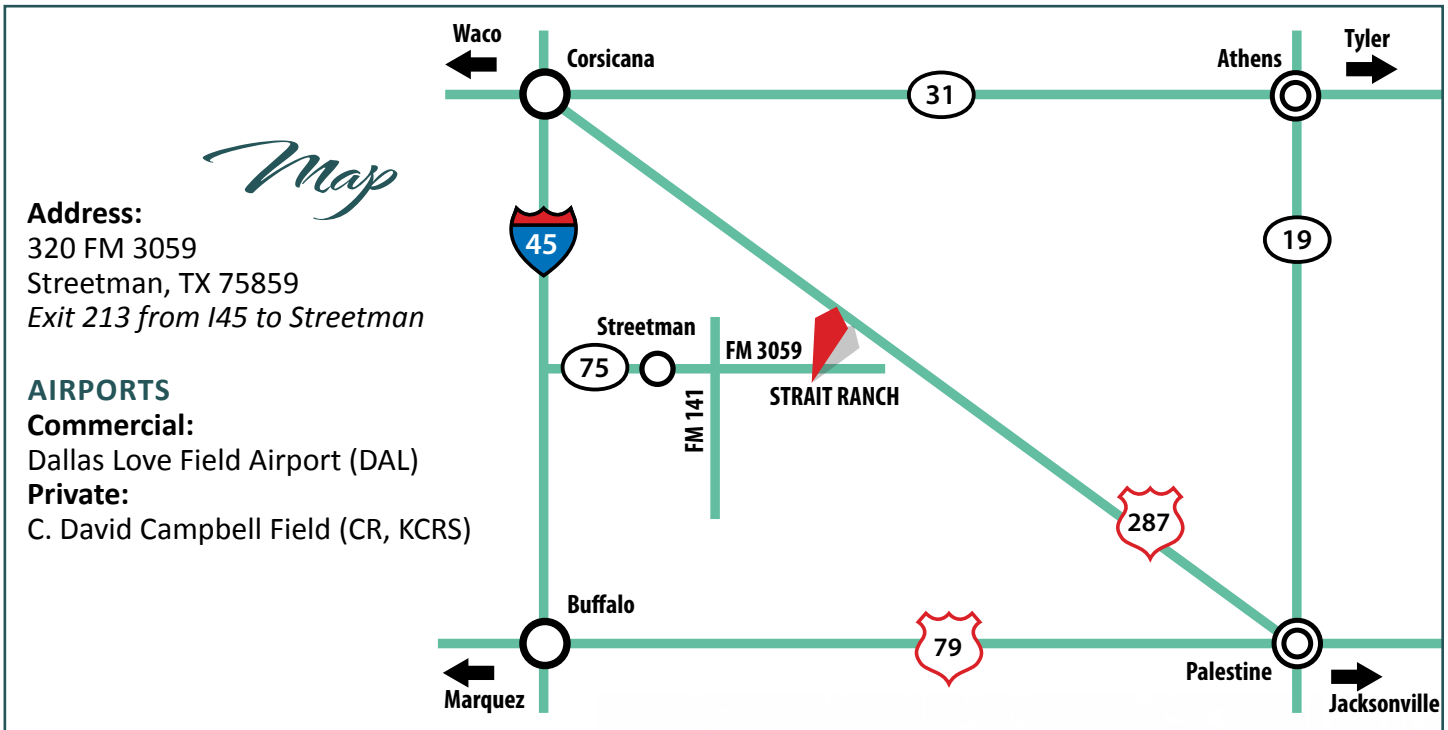
DVAuction
Broadcasting Real-Time Auctions
Real time bidding & proxy bidding available.

Serving Tex-Mex for over 70 years!

TEKA MOLINO
TEX-MEX RESTAURANT



Sale Information



September 2021 Percentile Chart

%	BW	WW	YW	MILK	SC	HCW	REA	MARB	FT	TEND
Best	-10.379	54.650	97.616	29.8421	2.360	53.707	0.7965	0.9136	-0.1590	-0.6399
Top 1%	-2.990	22.528	29.171	8.8537	0.805	13.951	0.1685	0.1760	-0.0227	-0.0745
Top 2%	-2.482	19.279	24.851	7.4836	0.677	11.300	0.1325	0.1226	-0.0158	-0.0533
Top 3%	-2.168	17.278	22.179	6.7345	0.606	9.755	0.1120	0.0959	-0.0130	-0.0439
Top 4%	-1.966	15.791	20.225	6.1064	0.559	8.660	0.0984	0.0809	-0.0113	-0.0378
Top 5%	-1.833	14.610	18.715	5.6303	0.526	7.836	0.0875	0.0695	-0.0101	-0.0324
Top 10%	-1.393	10.728	13.547	4.1694	0.456	5.315	0.0567	0.0423	-0.0065	-0.0164
Top 20%	-0.963	6.240	7.724	2.5851	0.443	2.832	0.0317	0.0370	-0.0031	-0.0040
Top 30%	-0.896	3.163	3.784	1.5655	0.425	1.421	0.0172	0.0319	-0.0012	0.0007
Top 40%	-0.659	0.650	0.580	0.8001	0.392	0.404	0.0080	0.0214	0.0002	0.0036
Top 50%	-0.385	-1.635	-2.273	0.6660	0.361	-0.506	0.0071	0.0118	0.0015	0.0057
Top 60%	-0.081	-3.786	-4.791	-0.0454	0.329	-1.137	-0.0015	0.0009	0.0026	0.0062
Top 70%	0.263	-5.760	-6.637	-0.8850	0.292	-1.405	-0.0127	-0.0122	0.0031	0.0070
Top 80%	0.674	-6.120	-7.439	-1.9930	0.240	-2.404	-0.0288	-0.0287	0.0033	0.0110
Top 90%	1.282	-9.103	-11.144	-3.7825	0.155	-4.153	-0.0572	-0.0570	0.0064	0.0194

All EPDs and footnotes in the catalog are based off of the September 2021 Santa Gertrudis Breeders International (SGBI) EPD run. SGBI updates EPDs and percentiles on a monthly basis (please visit www.santagertrudis.com for the most up to date information).

CATALOG DESIGN
Cattle Solutions
979.820.8362, kyle@cattlesolutions.com



VIDEOS PRODUCED BY
Ideal Video Productions
Wade Fisher, www.idealvideoproductions.com



SANTA GERTRUDIS IS

DATA DRIVEN

- › First *Bos indicus*-influenced breed to offer GE-EPDs.
- › First beef breed to implement “single-step” methodology.
- › 30 years of data collection = comprehensive genetic evaluation.
- › 11,000+ genotypes in SGBI data set – one of the largest for a *Bos indicus*-influenced breed.
- › Full range of growth and carcass EPDs = targeted selection and genetic progress.



PROFIT PROVEN

- › Produce crossbred commercial females sought by cattlemen everywhere.
- › Adds profitable heterosis to any production system.
- › On-test gains of 3.5+ lb. ADG = efficiency, profit.
- › Adaptability, heat and parasite tolerance, disease resistance and increased longevity = more profit.
- › Igenity® *Santa Gertrudis* aids in commercial replacement heifer selection.



SANTA GERTRUDIS

The Data Driven, Profit Proven choice for today's beef industry.



Santa Gertrudis Breeders International

361-592-9357 | sgbi@santagertrudis.com

santagertrudis.com | Find us on   





LOT 1



SR 15/6



20161104 • 15/6 • 1/30/2016 • Polled • 3N1-Cow

LJV MASON 0/72	SR 710	Bal Idx 7%
SR GENESIS 75/3 20132516	LJV DOLLY 8/48	
SR ARKOMA 30/0	MR WINROCK N127	C/C Idx 11%
AL ZEUS 213	PERNER D 931	
SR T13 (ET) 20132503	STETSON 5714	Term Idx 6%
SR ISABELLA 557	HEFTE RANCH 157	
	WENDT GERONIMO 3983	
	KUDO'S GOLDIE 61	



LOT 1A

	BW	WW	YW	MILK	TM	SC	HCW	REA	MARB	TEND
EPDs	0.81	9.68	10.07	-7.91	-3.08	0.41	0.08	0.04	0.18	-0.01
Acc	.45	.50	.34	.36	--	.32	.28	.31	.45	.23
%Rank	85%	15%	20%	99%	--	35%	45%	15%	1%	15%

AI 5/21/21 to Red Doc ET Todo 9561 (20197782). NS 6/9/21 - 7/15/21 to KR 7/1582 (20175788). NS 7/15/21 - 9/15/21 to SR 68/F2 (20207556).

SR 15/6 is the dam of SR/CB Nitro 46/18 who sold for \$38,000 in the 2019 Tried & True Sale. Nitro 46/18 currently resides at Harris Riverbend Farms and his first set of progeny to scan are coming this Fall and expectations are very high. 15/6 raised Nitro as a first calf heifer and has maintained her calving interval of 364 days after 4. Check out her Mateo heifer calf at side!



SR MS MATEO 557/J2



20211363 • 557/J2 • 3/6/2021 • • 3N1-HC

RED DOC DINERO 4088	KR 189/11	Bal Idx 1%
CA/RDF MATEO 7238 20174206	RDF BONITA 8017	
RED DOC 4009	HF FRED 390/1	C/C Idx 3%
SR GENESIS 75/3	RDF 9177	
SR 15/6 20161104	LJV MASON 0/72	Term Idx 1%
SR T13 (ET)	SR ARKOMA 30/0	
	AL ZEUS 213	
	SR ISABELLA 557	

	BW	WW	YW	MILK	TM	SC	HCW	REA	MARB	TEND
EPDs	-1.01	13.40	17.89	-3.24	3.46	0.48	9.82	0.16	0.30	-0.01
Acc	.33	.38	.26	.24	--	.25	.25	.24	.37	.21
%Rank	20%	10%	10%	90%	--	10%	3%	2%	1%	15%

Strait Ranches is retaining one IVF collection of at least 6 embryos. EXCITING!!! She should never be leaving the ranch! SR 557/J2 posts 10 EPD traits in the top 20%.





LOT 2



HEFTE RANCH G120

20188826 • G120 • 12/31/2018 • Scur • 3N1-Cow



MASTER BURNS 13-8	RDF TRAIL BOSS 0039	Bal Idx 20%
	ZSA-ZSA 7-4	
RED DOC MASTER BURNS 5461		C/C Idx 20%
20156199	RDF BONITA 8017	
	SJ TANKER 818	Term Idx 21%
HEFTE RANCH A90		
20135756	LYNX X56	
	SJ 5/D10 (ET) 5/D10	
	OLIVAREZ RANCHES 880	

	BW	WW	YW	MILK	TM	SC	HCW	REA	MARB	TEND
EPDs	1.73	11.49	14.44	5.65	11.40	0.25	2.18	0.07	0.03	0.00
Acc	.32	.46	.27	.25	--	.27	.26	.25	.38	.23
%Rank	95%	10%	10%	5%	--	80%	25%	10%	30%	35%

NS 5/1/21 - 6/16/21 to KR 191/13 (20131196). NS 6/17/21 - 8/01/21 to Hefte Ranch H04 (20197596).

Hefte Ranch G120 is a powerful daughter of Red Doc 5461 and out of Hefte Ranch A90. Easy keeping, gentle and with a perfect udder, her type is hard to come by. She has already proven her abilities with her first heifer calf. Her dam, A90 is extremely fertile with an impressive calving interval of 344 days and 7 calves on the ground. G120 sells bred with her second calf to either KR 191/13 or Hefte Ranch H04. Ultrasound on 9/07/21 dates her as most likely safe in calf to KR 191/13 with a calf due approximately March 2022.



HEFTE RANCH J43

20210073 • J43 • 2/1/2021 • Polled • 3N1-HC

KR 191/13	KR 97/10	Bal Idx 10%
	KR 517/04 1A	
HEFTE RANCH G06		C/C Idx 7%
20187226	HEFTE W03	
	RED DOC MASTER BURNS 5461	Term Idx 16%
HEFTE RANCH G120		
20188826	HEFTE RANCH A90	
	SJ TANKER 818	
	LYNX X56	

	BW	WW	YW	MILK	TM	SC	HCW	REA	MARB	TEND
EPDs	2.05	11.55	17.56	2.82	8.60	0.40	4.55	0.07	0.05	0.01
Acc	.24	.18	.11	.09	--	.09	.07	.10	.13	.00
%Rank	99%	10%	10%	20%	--	40%	15%	10%	10%	75%

Hefte Ranch J43 exemplifies a sound functional Santa Gertrudis female. Deep bodied, dark red, good bone, spring of rib, broody yet still feminine, smooth polled and gentle as can be. Her pedigree runs deep with South Texas genetics that have been proven time and time again. Some might say she's old school, but her EPDs say otherwise. She weaned with a phenomenal Adj. WW of 752 lbs. She ranks top 20% for 8 EPD traits and is top 5% for both HPREG and BBK. Walk her into the show ring, put her in the donor pen, or enjoy seeing her in your front pasture...she won't disappoint. We are proud and honored to donate the proceeds from the sale of Hefte Ranch F43 to the Y.N. Strait Memorial Scholarship Fund.



LOT 2A





LOT 3



SR 20/7



20170999 • 20/7 • 2/13/2017 • Polled • 3N1-Cow

LJV MASON 0/72	SR 710	Bal Idx 13%
	LJV DOLLY 8/48	
SR GENESIS 75/3	MR WINROCK N127	C/C Idx 31%
20132516	PERNER D 931	
SR ARKOMA 30/0	WENDT GERONIMO 3983	Term Idx 7%
MR CVF 2022	BRIGGS 003/99	
SR 446 (ET) 446	KUDO 084/92	
1247198	WELDER 203/93 203/3	
KUDO'S GOLDIE 61		



LOT 3A

	BW	WW	YW	MILK	TM	SC	HCW	REA	MARB	TEND
EPDs	-0.49	0.09	-2.85	-5.27	-5.23	0.15	-4.94	-0.03	0.25	-0.01
Acc	.38	.49	.36	.36	--	.31	.29	.30	.42	.23
%Rank	50%	45%	55%	95%	--	95%	95%	80%	1%	15%

AI 5/21/21 to Harris Farms 190E (20173826). NS 6/9/21- 7/15/21 to KR 7/1582 (20175788). NS 7/15/21 - 9/15/21 to SR 68/F2 (20207556).

Maintainig a 363 day calving interval after 3 calves. Her first calf SR 47/19 is currently in production at Hefte Ranch. Her 2020 heifer scanned an adjusted IMF of 6.5%. SR 20/7 is truly in the heart of her life and her progeny have already risen to the top of their production contemporaries.



SR MS 90/5 446/J



20211151 • 446/J • 3/8/2021 • • 3N1-HC

SR GENESIS 75/3	LJV MASON 0/72	Bal Idx 3%
	SR ARKOMA 30/0	
SR 90/5	4B-MR. BILLY RAY 337	C/C Idx 6%
20157838	TF 407	
TF 384	LJV MASON 0/72	Term Idx 3%
SR GENESIS 75/3	SR ARKOMA 30/0	
SR 20/7	MR CVF 2022	
20170999	KUDO'S GOLDIE 61	
SR 446 (ET) 446		

	BW	WW	YW	MILK	TM	SC	HCW	REA	MARB	TEND
EPDs	-0.55	11.31	8.51	-4.37	1.29	0.52	2.51	0.06	0.18	0.00
Acc	.31	.38	.25	.24	--	.26	.25	.23	.35	.21
%Rank	45%	10%	20%	95%	--	10%	25%	10%	2%	30%

Balanced EPD's posting 10 EPD traits in the top 45%.





LOT 4



SR 15/18



20180843 • 15/18 • 2/3/2018 • Polled • 3N1-Cow

KR 225/10	KR 230/08	Bal Idx 3%
KR CATALYST 531/15	KR 328/5 (ET) 328/5 F2	
20153484	KR 56/10	C/C Idx 3%
KR 310/12 2YO	KR 15/09 F1	
URBANOSKY 2-46	BULLETPROOF 4-30	Term Idx 3%
SR 13/5	KC 4/6	
20154693	RDF MACHO MAN 0088	
SR 76/2	SR 56/0	

	BW	WW	YW	MILK	TM	SC	HCW	REA	MARB	TEND
EPDs	2.11	11.91	23.23	-5.64	0.31	0.47	9.19	0.14	0.29	-0.01
Acc	.34	.46	.30	.32	--	.30	.29	.28	.40	.23
%Rank	99%	10%	3%	99%	--	10%	4%	2%	1%	20%

NS 12/17/20 - 7/21/21 to Red Doc Rapid Progress 8046 (20182179). NS 7/21/21 - 9/15/21 to SR 68/F2 (20207556).

SR 15/18 shows how Catalyst daughters are working in production. She is finishing raising her 2nd calf as a 3 year old. On top of her productivity she has as balanced a set of EPDs in the entire offering. She posts 9 EPD traits in the top 20%.



KR CATALYST 531/15
SIRE OF LOT 4



SR MS 90/5 803/J



20211230 • 803/J • 5/3/2021 • 3N1-HC

SR GENESIS 75/3	LJV MASON 0/72	Bal Idx 2%
SR 90/5	SR ARKOMA 30/0	
20157838	4B-MR. BILLY RAY 337	C/C Idx 3%
TF 384	TF 407	
KR CATALYST 531/15	KR 225/10	Term Idx 2%
SR 15/18	KR 310/12 2YO	
20180843	URBANOSKY 2-46	
SR 13/5	SR 76/2	

	BW	WW	YW	MILK	TM	SC	HCW	REA	MARB	TEND
EPDs	0.69	14.17	21.40	-4.88	2.20	0.73	11.18	0.13	0.19	0.00
Acc	.30	.37	.24	.23	--	.26	.25	.22	.35	.21
%Rank	85%	10%	4%	95%	--	2%	3%	2%	1%	30%

This is a very exciting heifer. Like her mother, she posts 9 traits in the top 30%.





LOT 5



SR 34/18

20180854 • 34/18 • 2/23/2018 • Horn • 3N1-Cow



LJV MASON 0/72	SR 710	Bal Idx 8%
	LJV DOLLY 8/48	
SR GENESIS 75/3	MR WINROCK N127	C/C Idx 17%
20132516	PERNER D 931	
SR ARKOMA 30/0	BRIGGS 564/5	Term Idx 5%
	BRIGGS 522/5	
BRIGGS 504/8	CB 1559	
BRIGGS 081/0	BRIGGS 599/00	
1287527		
BRIGGS 567/8		

	BW	WW	YW	MILK	TM	SC	HCW	REA	MARB	TEND
EPDs	-0.74	5.09	12.16	-1.44	1.10	0.55	8.93	0.10	0.06	0.00
Acc	.36	.48	.31	.34	--	.33	.28	.29	.41	.23
%Rank	40%	25%	15%	80%	--	5%	4%	5%	10%	30%

AI 5/21/21 to Red Doc 101 Proof ET 6101 (20164152). NS 6/9/21 - 7/15/21 to KR 7/1582 (20175788). NS 7/15/21 - 9/15/21 to SR 68/F2 (20207556).

From the same maternal line as Red Doc's SR 90/4 donor cow. This second calf heifer backed up 30 days to post a tremendous calving interval of 332 days after 2 calves. She posts 8 traits in the top 40%. Raising a very nice Mateo bull calf.



CA/RDF MATEO 7238
SIRE OF LOT 5A



SR MATEO 567/J4

20211364 • 567/J4 • 3/4/2021 • • 3N1-BC



RED DOC DINERO 4088	KR 189/11	Bal Idx 1%
	RDF BONITA 8017	
CA/RDF MATEO 7238	HF FRED 390/1	C/C Idx 5%
20174206	RDF 9177	
RED DOC 4009	LJV MASON 0/72	Term Idx 1%
	SR ARKOMA 30/0	
SR GENESIS 75/3	BRIGGS 504/8	
SR 34/18	BRIGGS 567/8	
20180854		
BRIGGS 081/0		

	BW	WW	YW	MILK	TM	SC	HCW	REA	MARB	TEND
EPDs	-1.04	13.80	21.17	-1.31	5.59	0.43	13.21	0.18	0.25	0.00
Acc	.32	.38	.26	.23	--	.25	.25	.24	.36	.21
%Rank	20%	10%	4%	75%	--	30%	2%	1%	1%	25%

An own son of RDF/CA Mateo 7238. Raise your own bull.





LOT 6



SR 37/6



20164701 • 37/6 • 3/1/2016 • Polled • 3N1-Cow

CSC FRED 8-5	M & M 5-0 5/0	Bal Idx 80%
HF FRED 445/2	CSC COWGIRL H-1	
2.01201E+11	HF PABLANO 096/2	C/C Idx 76%
SCC 5A4	SCC 2S62	
SR 538	POLLED RIDER 233	Term Idx 82%
SR 869	SR HOLLY 033	
1279356	MR DOUBLE TT CROOK HORN 106	
MISS DOUBLE TT 230	MISS TT BANKER 16	

	BW	WW	YW	MILK	TM	SC	HCW	REA	MARB	TEND
EPDs	-0.48	-3.34	-10.90	3.76	2.09	0.36	-9.74	-0.10	0.07	0.03
Acc	.35	.48	.27	.34	--	.26	.28	.24	.37	.23
%Rank	50%	60%	90%	15%	--	50%	99%	99%	5%	99%

AI 4/16/21 to SR Paradigm 135/7 (20175656). NS 4/26/21 - 5/19/21 to SR 27/6 (20164694). NS 5/20/21 - 7/20/21 to Red Doc Progress 8046 (20182179). NS 7/20/21 - 9/15/21 to SR 68/F2 (20207556).

SR 37/6 posts a 359 day average calving interval after 4 calves. One of her daughters SR 23/19 is in production at S & S Cattle Company and another daughter SR 61/20 is working at Four J Cattle Company.



LOT 6A



SR MS 27/6 869/J



20211237 • 869/J • 2/5/2021 • • 3N1-HC

LJV MASON 0/72	SR 710	Bal Idx 9%
SR 27/6	LJV DOLLY 8/48	
20164694	MR WINROCK N127	C/C Idx 7%
SR ARKOMA 30/0	PERNER D 931	
HF FRED 445/2	CSC FRED 8-5	Term Idx 12%
SR 37/6	SCC 5A4	
20164701	SR 538	
SR 869	MISS DOUBLE TT 230	

	BW	WW	YW	MILK	TM	SC	HCW	REA	MARB	TEND
EPDs	-1.39	1.02	2.17	0.32	0.83	0.80	2.58	0.08	0.04	0.03
Acc	.31	.39	.26	.24	--	.26	.25	.23	.36	.21
%Rank	15%	40%	35%	60%	--	2%	25%	10%	10%	95%

Records 9 EPD traits in the top 40%. Sired by SR 27/6 who is our full brother of SR Genesis 75/3.





LOT 7



SR 8/4



20141977 • 8/4 • 1/21/2014 • Horned • 3N1-Cow

STETSON 5714	WENDT 4660	Bal Idx 73%
	WENDT 5637	
AL ZEUS 213		C/C Idx 42%
1229411	BRIGGS 523/94	
HEFTE RANCH 157	HEFTE RANCH 405	Term Idx 86%
P H WELDER 9/413	P H WELDER 4/559	
	WELDER RANCH 531/2	
P H WELDER 7/342		
1281086	MISS GRANDVIEW 060	
MISS GRANDVIEW 545	GRANDVIEW'S LADY 051	



SR 42/7 'LUCCHESE'
SON OF LOT 7

AI 4/16/21 to SR Paradigm 135/7 (20175656). NS 4/26/21 - 5/19/21 to SR 27/6 (20164694). NS 5/20/21 - 7/20/21 to Red Doc Progress 8046 (20182179). NS 7/20/21 - 9/15/21 to SR 68/F2 (20207556).

SR 8/4 is a maternal sibling to SR Paradigm 136/7 and is on top of her game. She has maintained a 355 day average calving interval after 6 calves. She is the dam of the \$15,000 herd sire SR 42/7 "Lucchese" who is owned by the B Square Ranch (Bush Family). Schuster Farms has a daughter in production with SR 119/18. Check out her stout bull calf at side sired by our Mason son.



SR 128/6 342/J



20211137 • 342/J • 1/23/2021 • • 3N1-BC

LJV MASON 0/72	SR 710	Bal Idx 20%
	LJV DOLLY 8/48	
SR 128/6		C/C Idx 10%
20167254	HELLACIOUS 750	
SR T8 (ET)	SR ISABELLA 557	Term Idx 38%
AL ZEUS 213	STETSON 5714	
	HEFTE RANCH 157	
SR 8/4		
20141977	P H WELDER 9/413	
P H WELDER 7/342	MISS GRANDVIEW 545	

	BW	WW	YW	MILK	TM	SC	HCW	REA	MARB	TEND
EPDs	-0.27	5.53	4.03	-4.35	-1.59	0.42	0.69	0.06	-0.06	-0.03
Acc	.30	.37	.24	.25	--	.27	.25	.22	.36	.21
%Rank	55%	25%	30%	95%	--	35%	40%	10%	95%	10%

Posts 8 EPD traits in the top 55%





LOT 8



SR BELLA 91/5

20157872 • 91/5 • 9/16/2015 • Polled • 3N1-Cow



LJV MASON 0/72	SR 710	Bal Idx 1%
	LJV DOLLY 8/48	
SR GENESIS 75/3	MR WINROCK N127	C/C Idx 1%
20132516	PERNER D 931	
SR ARKOMA 30/0	RDF SANCHO 7-216	Term Idx 1%
RDF SANCHO'S NEVER BEFORE	CA3194	
1136		
SR T15 (ET)	P H WELDER 9/413	
20132525	MISS GRANDVIEW 545	
P H WELDER 7/342		

	BW	WW	YW	MILK	TM	SC	HCW	REA	MARB	TEND
EPDs	2.54	23.90	44.57	-2.30	9.65	0.68	17.00	0.16	0.04	-0.01
Acc	.38	.47	.35	.34	--	.32	.28	.30	.43	.23
%Rank	99%	1%	1%	85%	--	2%	1%	2%	30%	20%

AI 5/19/21 to SR Paradigm 135/7 (20175656). AI 5/21/21 to SR Mpcact 30/F2 (20180821).
 NS 6/8/21 - 7/12/21 to SR 38/19 (20190191). NS 7/13/21 - 9/15/21 to SR 68/F2 (20207556).
 SR 91/5 is a Genesis 75/3 daughter that has huge EPDs posting 10 traits in the top 30%. Her dam is a maternal sister to Paradigm 135/7.



LOT 8A



SR MS CATALYST 342/J2

20211138 • 342/J2 • 2/16/2021 • • 3N1-HC



KR 225/10	KR 230/08	Bal Idx 1%
	KR 328/5 (ET) 328/5 F2	
KR CATALYST 531/15	KR 56/10	C/C Idx 2%
20153484	KR 15/09 F1	
KR 310/12 2YO	LJV MASON 0/72	Term Idx 1%
SR GENESIS 75/3	SR ARKOMA 30/0	
SR BELLA 91/5	RDF SANCHO'S NEVER BEFORE 1136	
20157872	P H WELDER 7/342	
SR T15 (ET)		

	BW	WW	YW	MILK	TM	SC	HCW	REA	MARB	TEND
EPDs	2.03	16.07	29.47	-4.64	3.39	0.56	11.67	0.13	0.32	-0.01
Acc	.32	.40	.30	.27	--	.30	.28	.28	.39	.21
%Rank	99%	4%	1%	95%	--	4%	2%	3%	1%	20%

This heifer calf posts 9 EPD traits in the top 20%. Catalyst x Genesis!





LOT 9



HEFTE RANCH G41



20191485 • G41 • 1/2/2019 • Horn • 3N1-Cow

KR 97/10	RDF 8052	
KR 191/13	KR N2/5 4A	Bal Idx
20131196		9%
KR 517/04 1A	FIVE OAKS 29/0	C/C Idx
	KR 70/0	11%
ROSE HILL SAM HOUSTON 831	DF PLAYBOY 281	Term Idx
	C/A 314	9%
HEFTE RANCH D93		
20157789	SJ 5/D10 (ET) 5/D10	
MIRA X58	HEFTE RANCH 632	

	BW	WW	YW	MILK	TM	SC	HCW	REA	MARB	TEND
EPDs	0.94	9.42	13.70	-5.08	-0.37	0.09	8.48	0.06	0.08	0.01
Acc	.34	.40	.30	.29	--	.30	.31	.28	.39	.23
%Rank	90%	15%	10%	95%	--	95%	5%	10%	5%	85%

NS 5/27/21 - 8/01/21 to Hefte Ranch H04 (20197596).

This pair sells together.

Hefte Ranch G41 is a KR 191/13 daughter. Her dam, Hefte Ranch D93 is the dam of Hefte Ranch F19 Pure Swagger, making this female a maternal half sib to Buna Vida Cattle Co.'s impressive herd sire. Gentle with a nice udder, this cow will be a great producer. She has strong numbers with good growth, carcass and fertility EPDs. Hefte Ranch G41 sells bred back to Hefte Ranch H04, who scanned and impressive 6.7%IMF with a 1.25 REA/cwt.



LOT 9A



HEFTE RANCH J71



20210897 • J71 • 2/17/2021 • Scur • 3N1-HC

HARCO 1323	HARCO T956 (ET) T956	
HEFTE RANCH D25	HARCO T720 (ET) T720	Bal Idx
20160227		3%
HEFTE RANCH A88	SJ TANKER 818	C/C Idx
	MANITOU IV 54/07	3%
KR 191/13	KR 97/10	Term Idx
	KR 517/04 1A	5%
HEFTE RANCH G41		
20191485	ROSE HILL SAM HOUSTON 831	
HEFTE RANCH D93	MIRA X58	

	BW	WW	YW	MILK	TM	SC	HCW	REA	MARB	TEND
EPDs	1.43	17.35	26.64	0.82	9.49	0.26	13.88	0.15	0.00	0.01
Acc	.38	.38	.28	.23	--	.28	.26	.26	.37	.21
%Rank	95%	3%	2%	40%	--	80%	2%	2%	65%	90%

This heifer calf is sired by Hefte Ranch D25, who is known for his fertile, fancy females. She has a strong pedigree, she will have a beautiful udder, and this sound heifer will have a very productive future ahead of her. She has 6 EPD traits in the top 10% with strong growth, carcass and fertility numbers.





LOT 10



SR 11/3



20132493 • 11/3 • 1/9/2013 • Polled • 3N1-Cow

RDF MACHO MAN 886/08	KR136/06
RDF MACHO MAN 0088	KR 753/03 4A
1289908	RDF LAURELES149/03
RDF LINDA 8127	RDF 8-86
MR WINROCK N127	WR NEW MILLENNIUM H233
	MASDEN & SON 225/9
SR 85/0	YOGI 1562
1294554	SR REALITY SHINES 710
SR 716	

Bal Idx	5%
C/C Idx	3%
Term Idx	11%

	BW	WW	YW	MILK	TM	SC	HCW	REA	MARB	TEND
EPDs	-0.83	6.20	7.10	7.88	10.98	0.71	8.52	0.04	-0.06	0.06
Acc	.43	.50	.29	.44	--	.27	.29	.25	.38	.23
%Rank	35%	25%	25%	2%	--	2%	5%	20%	95%	99%

AI 5/21/21 to SR Surge 4/19 (20190137). NS 6/9/21 - 7/15/21 to KR 7/1582 (20175788). NS 7/15/21 - 9/15/21 to SR 68/F2 (20207556).

SR 11/3 is one of the first Macho Man 0088 daughters that we have sold. We have a set of paternal sisters that have been very productive. If you look at the pedigree of our bulls being offered in this sale you will see a lot of representation of our Macho Man daughters. 11/3 has a very balanced EPD profile recording 9 EPD traits in the top 35%. 11/3 has a 368 day average calving interval after 7 calves.



LOT 10A



SR MS 128/6 85/1



20211235 • 85/J • 3/11/2021 • • 3N1-HC

LJV MASON 0/72	SR 710
LJV DOLLY 8/48	LJV DOLLY 8/48
SR 128/6	HELLACIOUS 750
20167254	SR ISABELLA 557
SR T8 (ET)	RDF MACHO MAN 886/08
RDF MACHO MAN 0088	RDF LINDA 8127
SR 11/3	MR WINROCK N127
20132493	SR 716
SR 85/0	

Bal Idx	4%
C/C Idx	2%
Term Idx	10%

	BW	WW	YW	MILK	TM	SC	HCW	REA	MARB	TEND
EPDs	-0.55	10.00	11.59	3.11	8.11	0.56	8.50	0.08	-0.05	0.01
Acc	.31	.37	.24	.25	--	.26	.25	.22	.35	.21
%Rank	45%	15%	15%	20%	--	5%	5%	10%	90%	80%

SR 85/1 is by a Mason son out of the 557 cow family that has produced numerous show quality heifers. Writes 9 EPD traits in the top 45%.



LOT 11 - HEFTE RANCH G43

Hefte Ranch G43 is a KR 191/13 daughter. Her dam, Briggs 507/13 has been an very solid producer for us, with a calving interval of 342 days with 6 calves produced. G43 had a stellar bull calf this spring, but we tragically lost him to a snake bite in May. G43 had a very quick breed back and should calve in early February 2022. Ultrasound dates her safe in calf to Hefte Ranch F82, a son of Red Doc 3162, who has produced some very fancy calves for us.



LOT 11

11 **HEFTE RANCH G43** **GGP**
 20187271 • G43 • 12/22/2018 • Polled • Bred Cow

KR 97/10	RDF 8052	
	KR N2/5 4A	
KR 191/13		
20131196	FIVE OAKS 29/0	
	KR 70/0	
	CB 1559	
	WENDT 6333	
BRIGGS 507/13		
20132230	WENDT 5162	
	BRIGGS 546/1	

Bal Idx 29%
C/C Idx 23%
Term Idx 37%

	BW	WW	YW	MILK	TM	SC	HCW	REA	MARB	TEND
EPDs	0.41	1.38	2.20	-2.63	-1.94	0.03	0.54	-0.03	0.05	0.00
Acc	.32	.46	.34	.30	--	.30	.31	.32	.45	.21
%Rank	75%	40%	35%	85%	--	99%	40%	85%	10%	30%

NS 4/01/21 - 5/20/21 to Hefte Ranch F82 (20176895). NS 5/27/21 - 6/17/21 to Hefte Ranch H04 (20197596).

12 **HEFTE RANCH G99** **GGP**
 20191560 • G99 • 1/28/2019 • Polled • Bred Cow

HARCO 1323	HARCO T956 (ET) T956	
	HARCO T720 (ET) T720	
HEFTE RANCH D25		
20160227	SJ TANKER 818	
	MANITOU IV 54/07	
	DF PLAYBOY 281	
	CIA 314	
HEFTE RANCH D110		
20157794	SJ JESTER 911	
	SOLOMON'S MISS JULIE 812/11	

Bal Idx 16%
C/C Idx 26%
Term Idx 11%

	BW	WW	YW	MILK	TM	SC	HCW	REA	MARB	TEND
EPDs	0.59	6.28	15.89	1.53	4.67	0.39	7.99	0.05	0.03	0.02
Acc	.32	.45	.33	.25	--	.28	.28	.30	.45	.23
%Rank	80%	20%	10%	35%	--	45%	5%	15%	35%	90%

NS 4/01/21 - 5/20/21 to Hefte Ranch F82 (20176895). NS 5/27/21 - 6/17/21 to Hefte Ranch H04 (20197596).

LOT 12 - HEFTE RANCH G99

This gentle, polled Hefte Ranch D25 daughter is out of Hefte Ranch D110. Her first calf was born in February 2021, but we weaned him early due to drought conditions at that time. According to July ultrasound, she sell bred back with her 2nd calf to Hefte Ranch H04. The high maintenance period of her life is behind her and she has a long and productive life ahead of her.



LOT 12



LOT 13



HEFTE KORBAN H167 ET

20203281 • H167 • 3/25/2020 • Polled • Bred Heifer



KR 191/13

20131196

KR 97/10

KR 517/04 1A

KR 921/15

HEFTE RANCH F35

20180010

HEFTE RANCH KT 600

RDF 8052

KR N2/5 4A

FIVE OAKS 29/0

KR 70/0

KR 800/11

KR 110N/09 110/09 N6

RED DOC 3162

B109

Bal Idx
2%

C/C Idx
4%

Term Idx
1%

	BW	WW	YW	MILK	TM	SC	HCW	REA	MARB	TEND
EPDs	0.48	10.36	15.74	-1.67	3.51	0.18	10.88	0.09	0.30	0.00
Acc	.32	.38	.29	.25	--	.30	.30	.28	.38	.21
%Rank	80%	15%	10%	80%	--	90%	3%	5%	1%	40%

Hefte Ranch retains the right to one flush or IVF procedure guaranteeing a minimum of six (6) freezable embryos.

NS 7/18/21 - 8/30/21 to Hefte Ranch F14 (20175282).

This is a donor female if we ever saw one! A very fancy ET female sired by KR 191/13 and out of Proven Dam Trait Leader for Marbling, Hefte Ranch F35. With a 626 lb. adj. WW and scanning a 5.12% IMF, she checks all the boxes! Her .3 Marb EPD places her well up in the top 1%, she has a top 4% BackFat and top 5% REA as well. Great fertility and good growth numbers round out her exceptional EPDs. She sells safe in calf to Hefte Ranch F14, himself a Proven Sire Trait Leader for Marbling. The resulting calf should have style, performance and exceptional EPDs.



KR 191/13
SIRE OF LOT 13



HEFTE RANCH F14
SERVICE SIRE TO LOT 13





HEFTE KORBAN H163 ET



20203282 • H163 • 4/18/2020 • Polled • Bred Heifer

RDF QUIEN SABE 0120	OIX JORGE 690	Bal Idx 1%
	RDF 3-4	
RED DOC 3162	RDF 2-134	C/C Idx 1%
20131002	OLIVAREZ RANCHES 1-916	
RDF 5-27	RED DOC SI SABE 3106	Term Idx 1%
RED DOC 6042	RED DOC 4003	
RED DOC 8061	KR 720/11	
20182701	RED DOC MULTIPLE DAM MD	

	BW	WW	YW	MILK	TM	SC	HCW	REA	MARB	TEND
EPDs	-0.62	21.28	25.45	4.09	14.73	0.41	13.83	0.15	0.16	0.00
Acc	.33	.38	.27	.24	--	.26	.25	.24	.37	.21
%Rank	45%	2%	2%	15%	--	35%	2%	2%	2%	45%

AI 7/15/21 to QVF Jackpot 5369G8 (20193317). NS 7/18/21 - 8/30/21 to Hefte Ranch F14 (20175282).

Looking for EPD stars, don't miss this female and the calf she is carrying.

Red Doc genetics top and bottom, she is out of Red Doc 3162 and Korban Cattle's donor female, Red Doc 8061. She offers a unique pedigree with an extremely impressive set of EPD's across the board. Top 1% BackFat, Top 2% Marb, REA, WW and YW. AI'ed to QVF Jackpot 5369G8, and cleaned up with Hefte Ranch F14, the resulting calf will have amazing EPDs. Ultrasound dates her as likely safe in calf to Jackpot 5369G8.



LOT 14



HEFTE RANCH H31



20196758 • H31 • 10/2/2019 • Polled • Bred Heifer

KR 97/10	RDF 8052	Bal Idx 7%
	KR N2/5 4A	
KR 191/13	FIVE OAKS 29/0	C/C Idx 7%
20131196	KR 70/0	
KR 517/04 1A	HARRIS FARMS 15/4	Term Idx 8%
CSC UNO MAAS 135	CSC 5-6	
HEFTE RANCH D87	PG 510-6	
20160969	HEFTE RANCH 711	

	BW	WW	YW	MILK	TM	SC	HCW	REA	MARB	TEND
EPDs	0.69	7.86	11.24	-1.08	2.85	0.12	6.34	0.08	0.11	-0.01
Acc	.31	.45	.34	.28	--	.29	.31	.32	.45	.21
%Rank	85%	20%	15%	75%	--	95%	10%	10%	3%	15%

AI 4/21/21 to CA/RDF Mateo 7238 (20174206). NS 5/27/21 - 6/17/21 to Hefte Ranch H04 (20197596).

Hefte Ranch H31 is one of our personal favorites. She is a KR 191/13 daughter and is gentle and easy keeping.

Top 3% MARB EPD as well as top 2% HPREG and top 4% BBK, this is a well-rounded female in person and on paper. AI'ed to CA/RDF Mateo 7238 and cleaned up with Hefte Ranch H04. Ultrasound dates her as most likely safe in calf to Marbling Trait Leader, CA/RDF Mateo 7238. This one is really hard to let go.



LOT 15



HEFTE RANCH H05



20196763 • H05 • 10/30/2019 • Polled • Bred Heifer

KR 97/10	RDF 8052	Bal Idx 5%
	KR N2/5 4A	
KR 191/13	FIVE OAKS 29/0	C/C Idx 3%
20131196	KR 70/0	
KR 517/04 1A	RDF 8091	Term Idx 10%
RED DOC TOP SHELF 1342	RDF 7-65	
HEFTE RANCH E150	BRIGGS 573/6	
20170879	BRIGGS 511/3	

	BW	WW	YW	MILK	TM	SC	HCW	REA	MARB	TEND
EPDs	0.16	11.06	14.94	-3.23	2.30	0.25	11.49	0.09	-0.02	0.01
Acc	.37	.46	.34	.29	--	.29	.31	.31	.44	.21
%Rank	70%	10%	10%	90%	--	80%	2%	5%	80%	55%

NS 5/27/21 - 6/14/21 to Hefte Ranch H04 (20197596). NS 6/17/21 - 8/01/21 to Hefte Ranch F14 (20175282).

Fancy, moderate heifer sired by KR 191/13 and out of Hefte Ranch E150.

This heifer had a 64 lb BW and an Adj WW of 643 lbs! Her pedigree includes Red Doc Top Shelf and Briggs on the maternal side. She has 6 EPD traits in the top 10% including top 2% HPREG and BBK. She was observed in heat on 07/10/21 with Hefte Ranch F14, a Proven Sire Trait Leader for Marbling. F14 is a low BW sire that is doing it all at Hefte Ranch. Take a look at his sons in this sale, all were sired by first calf heifers! This combination of KR 191 and F14 should produce an exceptionally balanced calf.



LOT 16



17

HEFTE RANCH H57



20197627 • H57 • 11/3/2019 • Polled • Bred Heifer

HARCO 1323	HARCO T956 (ET) T956	Bal Idx 16%
	HARCO T720 (ET) T720	
HEFTE RANCH D25		C/C Idx 9%
20160227	SJ TANKER 818	
HEFTE RANCH A88	MANITOU IV 54/07	Term Idx 31%
	CHAPS 372	
AJH 126/0	DOUBLE E 8T39	
HEFTE RANCH B107		
20140301	PG 510-6	
BELLATRIX X19	HEFTE RANCH 629	

	BW	WW	YW	MILK	TM	SC	HCW	REA	MARB	TEND
EPDs	0.45	7.70	10.78	0.23	4.08	0.03	4.22	0.05	-0.06	0.02
Acc	.32	.46	.34	.26	--	.29	.27	.31	.45	.21
%Rank	75%	20%	15%	60%	--	99%	15%	15%	90%	95%

AI 4/21/21 to SR Paradigm 135/7 (20175656). NS 5/27/21 - 6/17/21 to Hefte Ranch H04 (20197596).

A gentle, stout Hefte Ranch D25 daughter from the heart of our herd. She is out of Hefte Ranch B107, an AJH 126/0 daughter that has been a very successful producer for us. B107 has a 364 day calving interval with 6 calves produced - one of those being our herd sire Hefte Ranch F82. The Hefte Ranch D25 daughters have a reputation for good udders and fertility. Ultra-sound dates this female as likely safe to SR Paradigm 135/7. What an awesome combination of proven genetics in the resulting calf!



LOT 17

18

HEFTE RANCH H03



20197021 • H03 • 10/28/2019 • Polled • Bred Heifer

HARCO 1323	HARCO T956 (ET) T956	Bal Idx 2%
	HARCO T720 (ET) T720	
HEFTE RANCH D25		C/C Idx 2%
20160227	SJ TANKER 818	
HEFTE RANCH A88	MANITOU IV 54/07	Term Idx 2%
	RDF SANCHO'S NEVER BEFORE 1136	
RED DOC NEVER SANK 5012	RED DOC 3001	
HEFTE RANCH F04		
20175253	RPV 7/0 RPV7/0	
HEFTE RANCH D136ET	LIZZY 54/06	

	BW	WW	YW	MILK	TM	SC	HCW	REA	MARB	TEND
EPDs	-0.14	14.30	24.31	1.18	8.33	0.43	14.67	0.16	0.03	0.01
Acc	.39	.45	.33	.24	--	.28	.26	.30	.44	.21
%Rank	60%	10%	3%	40%	--	30%	1%	2%	35%	85%

AI 4/21/21 to SR Paradigm 135/7 (20175656). NS 5/27/21 - 6/17/21 to Hefte Ranch H04 (20197596).

Feminine, moderate daughter of Hefte Ranch D25 and out of first calf heifer, Hefte Ranch F04. Her dam, F04 is a Never Sank daughter that also goes back to the infamous Dunlap Harper "Liz" cow that has had a huge influence in our herd. A nice EPD set to boot with good growth and fertility numbers, we think this heifer has the right stuff. AI'ed to SR Paradigm and cleaned up Hefte Ranch H04. You can't go wrong with either combination.



LOT 18

19

HEFTE RANCH H142



20202553 • H142 • 2/10/2020 • Polled • Bred Heifer

MASTER BURNS 13-8	RDF TRAIL BOSS 0039	Bal Idx 3%
	ZSA-ZSA 7-4	
RED DOC MASTER BURNS 5461		C/C Idx 4%
20156199	SCC NEW VISION 4V42	
RDF BONITA 8017	RDF 6-316	Term Idx 2%
RDF SANCHO'S NEVER BEFORE	RDF SANCHO 7-216	
1136	CA3194	
TIDELAND 401		
20140702	HARCO T030/6 (ET) T030/6	
TIDELAND 204	PCR HARRIETTE 33/7	

	BW	WW	YW	MILK	TM	SC	HCW	REA	MARB	TEND
EPDs	1.15	14.91	28.75	4.46	11.91	0.29	14.28	0.22	0.05	0.00
Acc	.30	.45	.33	.25	--	.27	.27	.29	.44	.21
%Rank	90%	5%	2%	10%	--	70%	1%	1%	10%	35%

AI 6/5/21 to SR Paradigm 135/7 (20175656). NS 6/17/21 - 8/1/21 to Hefte Ranch F14 (20175282).

This heifer is a daughter of Red Doc 5461, a maternal sib to Never Better, and out of TL 401, a Never Before daughter from Tideland Farms. H142 scanned a 5.13% IMF and has 7 EPD traits in the top 10% including a top 1% REA. She was observed in heat on 06/30/21 with Proven Trait Leader Hefte Ranch F14. The calf on board should be awesome with excellent EPDs.



LOT 19



20

HEFTE RANCH H153



20202572 • H153 • 2/3/2020 • Polled • Bred Heifer

MASTER BURNS 13-8	RDF TRAIL BOSS 0039	Bal Idx 40%
	ZSA-ZSA 7-4	
RED DOC MASTER BURNS 5461	SCC NEW VISION 4V42	C/C Idx 21%
20156199	RDF BONITA 8017	
	RDF 6-316	Term Idx 74%
	SJ HAWK'S HUMMER 3/H2	
	SJ LADY MARIE 655	
HEFTE RANCH A67	SJ 5/D10 (ET) 5/D10	
20130243	HEFTE RANCH 043	
	DOMINO 880	

	BW	WW	YW	MILK	TM	SC	HCW	REA	MARB	TEND
EPDs	0.97	7.40	9.68	3.44	7.14	0.23	1.51	0.06	-0.11	0.00
Acc	.29	.45	.31	.25	--	.26	.27	.29	.44	.21
%Rank	90%	20%	20%	15%	--	85%	30%	15%	99%	45%

NS 4/28/21 - 6/17/21 to Hefte Ranch H04 (20197596).

A very pretty polled Red Doc 5461 daughter out of Hefte Ranch A67. Her dam, A67 has been a very solid producer with an impressive calving interval of 354 days with 7 calves on the ground. H153 sells safe in calf to Hefte Ranch H04, our highest scanning bull this year with a 6.7%IMF and a 1.25 REA/cwt with a calf due approximately February 2022.



LOT 20

21

HEFTE RANCH H00

20197615 • H00 • 11/13/2019 • Polled • Bred Heifer

KR 97/10	RDF 8052	Bal Idx 4%
	KR N2/5 4A	
KR 191/13	FIVE OAKS 29/0	C/C Idx 3%
20131196	KR 70/0	
	WHAT A BULL W33	Term Idx 6%
	CARROLL SANTA GERTRU 061	
	WENDT 5162	
MABEL W40	BRIGGS 061/3	
1279857	HEFTE RANCH 555/7	

	BW	WW	YW	MILK	TM	SC	HCW	REA	MARB	TEND
EPDs	1.28	17.49	20.92	-7.41	1.34	0.00	9.94	0.10	-0.02	0.00
Acc	.17	.37	.27	.23	--	.15	.19	.25	.36	.00
%Rank	95%	3%	4%	99%	--	99%	3%	4%	75%	45%

NS 3/22/21 - 6/17/21 to Hefte Ranch H04 (20197596).

Sired by KR 191/13 and out of one of our favorite cows, Mabel W40. Mabel was one of Carson's first show heifers and she has left her mark on our herd by producing many replacement females. Mabel has a calving interval of 386 days with 10 calves on the ground and she is still going strong! H00 has 7 EPD traits in the top 10% including top 2% HPREG and BBK. Ultrasound shows her to be carrying a January 2022 calf.



LOT 21

22

HEFTE RANCH H122 ET



20197824 • H122 • 9/2/2019 • Scur • Bred Heifer

KR 97/10	RDF 8052	Bal Idx 4%
	KR N2/5 4A	
KR 191/13	FIVE OAKS 29/0	C/C Idx 3%
20131196	KR 70/0	
	SJ HAWK'S HUMMER 3/H2	Term Idx 7%
	SJ LADY MARIE 655	
	CANYON 70/40	
HEFTE RANCH A88	MANITOU III 820/8	
20130240	MANITOU IV 54/07	

	BW	WW	YW	MILK	TM	SC	HCW	REA	MARB	TEND
EPDs	1.04	13.26	15.94	-2.67	3.95	0.31	8.05	0.08	0.08	0.00
Acc	.32	.41	.31	.31	--	.30	.30	.40	.40	.21
%Rank	90%	10%	10%	85%	--	65%	5%	10%	5%	45%

AI 4/21/21 to CA/RDF Mateo 7238 (20174206). NS 5/27/21 - 6/17/21 to Hefte Ranch H04 (20197596).

This is a gentle ET heifer out of KR 191/13 and Hefte Ranch A88, the dam of Hefte Ranch D25. This heifer got a rough start at the calf raisers, but she is a combination of some of our top genetics and she has a productive future ahead of her. Her dam, Hefte Ranch A88 is a great producer with a picture perfect udder and a calving interval of 356 days with 7 natural calves. Lots of fertility in this heifer's genetics! A strong and balanced EPD set with top 10% and better rankings for growth, carcass and fertility. Safe in calf to either CA/RDF Mateo or Hefte Ranch H04, you can't go wrong.



LOT 22

23

HEFTE RANCH H29



20196757 • H29 • 9/29/2019 • Polled • Bred Heifer

KR 191/13

20131196

KR 97/10

KR 517/04 1A

CSC UNO MAAS 135

HEFTE RANCH D30

20160230

HEFTE RANCH 825

RDF 8052

KR N2/5 4A

FIVE OAKS 29/0

KR 70/0

HARRIS FARMS 15/4

CSC 5-6

MR CVF 2022

BRIGGS 061/3

Bal Idx

19%

C/C Idx

28%

Term Idx

15%

	BW	WW	YW	MILK	TM	SC	HCW	REA	MARB	TEND
EPDs	0.93	0.94	2.45	-3.73	-3.26	0.10	1.01	0.00	0.19	-0.02
Acc	.32	.45	.34	.28	--	.28	.31	.31	.44	.21
%Rank	85%	40%	35%	90%	--	95%	35%	65%	1%	10%

AI 4/21/21 to CA/RDF Mateo 7238 (20174206). NS 5/27/21 - 6/17/21 to Hefte Ranch H04 (20197596).

Dark red, polled KR 191/13 daughter with the rare EPD combination of top 1% MARB and top 2% BackFat. On her dam's side, she goes back to Briggs and CVF 2022. This heifer scanned a 5.54%IMF with only .11 BF. She has excellent fertility EPDs to boot. Ultrasound dates this heifer as likely safe in calf to CA/RDF Mateo 7238 with a late January 2022 calf on board.



LOT 23

24

HEFTE RANCH F39



20196484 • H39 • 12/22/2019 • Polled • Bred Heifer

BRIGGS 001E2

20175999

T3 PASSPORT 2C4

BRIGGS 001/12

ROBERTO BRIGGS 072/13

BRIGGS 295E

20176108

SOUTHERN Y 295/3

BRANGUS

BRANGUS

KJ 7/6

MULTIPLE DAM

BRIGGS 580/0

BRIGGS 092/10

SOUTHERN Y 762

SOUTHERN Y 861

Bal Idx

2%

C/C Idx

1%

Term Idx

4%

	BW	WW	YW	MILK	TM	SC	HCW	REA	MARB	TEND
EPDs	0.28	16.86	22.66	1.65	10.08	0.49	10.54	0.06	-0.05	0.01
Acc	.28	.37	.25	.23	--	.26	.24	.23	.37	.21
%Rank	75%	4%	3%	30%	--	10%	3%	15%	90%	75%

NS 6/18/21 - 8/30/21 to Hefte Ranch F14 (20175282).

Star5 - 3/4 Santa Gertrudis/ 1/4 Brangus

This fancy, polled heifer is a Super American composed of 3/4 Santa Gertrudis and 1/4 Brangus. We purchased her dam, Briggs 295E at the 2019 TriStar Sale as a bred heifer, and we are really impressed by the calf she produced on her first try. This heifer's offspring, when bred to a purebred Santa Gertrudis, will be eligible to register as a purebred. So the calf she is carrying sired by Hefte Ranch F14 will be considered a purebred Santa Gertrudis. A great opportunity to bring in some new genetics to your herd.



LOT 24

25

STRAIT HEFTE H146



20202583 • H146 • 2/22/2020 • Polled • Bred Heifer

HEFTE RANCH F42

20175391

KR 482/15

KR 517/04 1A

TF 1167

TF 804

20181339

TF BAMA GIRL

KR 781/13

KR 34/08 1A

FIVE OAKS 29/0

KR 70/0

TF 794

KR 57/001

OLD JOE 659/3

FULLINGTON FARMS 23/05

Bal Idx

21%

C/C Idx

40%

Term Idx

12%

	BW	WW	YW	MILK	TM	SC	HCW	REA	MARB	TEND
EPDs	-0.44	3.40	5.36	-0.42	1.28	0.35	4.79	0.05	0.05	-0.02
Acc	.39	.42	.28	.22	--	.24	.26	.25	.40	.21
%Rank	50%	30%	30%	65%	--	55%	15%	15%	10%	10%

AI 6/24/21 to SR Marksman 33/19 (20190165). NS 7/19/21 - 8/30/21 to Hefte Ranch F14 (20175282).

This deep bodied, polled heifer is a daughter of Tinney Farms 804, a female purchased at the Alabama Connection Sale. Her sire is Hefte Ranch F42, a maternal sib to KR 191/13. AI'ed to SR Marksman 33/19, and cleaned up with Hefte Ranch F14. Ultrasound dates her as likely bred to SR Marksman. Regardless of the mating, the resulting calf will have an awesome set of EPDs.



LOT 25



26

STRAIT HEFTE 30/20



20200241 • 30/20 • 2/16/2020 • • Bred Heifer

LJV MASON 0/72

1290709 LJV DOLLY 8/48

RDF LA JOY'S BOY 8183

316

20162316 2/14

WR CHALLENGER L230
RBC MISS PARTNER 390

LJV VAQUERO 4/22
SR 549
KR 659/06
RDF 6-114

RED DOC JORGE 1382
RDF 0131

Bal Idx

10%

C/C Idx

9%

Term Idx

12%

	BW	WW	YW	MILK	TM	SC	HCW	REA	MARB	TEND
EPDs	-0.46	5.75	7.07	-2.79	0.09	0.52	3.98	0.10	0.02	-0.01
Acc	.33	.38	.27	.27	--	.28	.27	.25	.36	.21
%Rank	50%	25%	25%	90%	--	10%	15%	5%	45%	15%

AI 6/24/21 to SR Marksman 33/19 (20190165). NS 6/25/21 - 8/01/21 to Hefte Ranch F14 (20175282).

Moderate framed, stout Mason daughter out of Drake 316. Her dam, Drake 316 is an easy keeping and very fertile cow. At 6 years of age, Drake 316 has had 5 calves with a calving interval of 346 days. Ultrasound dates this female as likely bred to SR Marksman 33/19.



LOT 26

27

SR 33/20



20200245 • 33/20 • 2/17/2020 • • Bred Heifer

LJV MASON 0/72

1290709 LJV DOLLY 8/48

BRIGGS 504/8

BRIGGS 081/0

1287527 BRIGGS 567/8

WR CHALLENGER L230
RBC MISS PARTNER 390

LJV VAQUERO 4/22
SR 549
BRIGGS 564/5
BRIGGS 522/5

CB 1559
BRIGGS 599/00

Bal Idx

4%

C/C Idx

8%

Term Idx

3%

	BW	WW	YW	MILK	TM	SC	HCW	REA	MARB	TEND
EPDs	-0.35	15.43	20.82	-0.04	7.68	0.69	11.60	0.26	-0.02	-0.01
Acc	.35	.45	.33	.31	--	.30	.28	.30	.44	.21
%Rank	55%	5%	4%	60%	--	2%	2%	1%	75%	20%

AI 6/24/21 to SR Marksman 33/19 (20190165). NS 7/8/21 - 7/28/21 to SR 30/F6 (2018192). NS 7/29/21 - 8/25/21 to Wendt 9386 (20203887).

SR 33/20 is a powerful heifer ranking in the top 1% of the top 1% for REA in the breed posting a .26 EPD. Her combination of being an own daughter of Mason and out of one of our great Briggs cows makes her to be a candidate to produce herd sires. The Marksman A.I. mating or the Wendt 9836 mating could be setup to produce just that as a first calf heifer. SR 33/20's dam has an average calving interval of 380 days after 9 calves.



LOT 27

28

SR 37/20



20200249 • 37/20 • 2/26/2020 • • Bred Heifer

SR 27/6

20164694 SR ARKOMA 30/0

KR 97/10

SR T38

20164711 BRIGGS 567/8

SR 710
LJV DOLLY 8/48

MR WINROCK N127
PERNER D 931
RDF 8052
KR N2/5 4A

CB 1559
BRIGGS 599/00

Bal Idx

15%

C/C Idx

35%

Term Idx

8%

	BW	WW	YW	MILK	TM	SC	HCW	REA	MARB	TEND
EPDs	-0.81	6.88	8.70	-5.39	-1.95	0.44	4.53	0.09	0.01	0.00
Acc	.31	.44	.32	.25	--	.28	.28	.29	.43	.21
%Rank	35%	20%	20%	95%	--	30%	15%	5%	50%	25%

AI 6/25/21 to CA/RDF Mateo 7238 (20174206). NS 7/8/21 - 7/28/21 to SR 30/F6 (2018192). NS 7/29/21 - 8/25/21 to Wendt 9386 (20203887).

SR 37/20 is by our full brother to Genesis 75/3 and out of a tremendous Briggs cow. She posts 8 EPD traits in the top 30%.



LOT 28





SR 40/20



20200252 • 40/20 • 3/1/2020 • • Bred Heifer

<p>SR 710</p> <p>LJV MASON 0/72 1290709</p> <p>LJV DOLLY 8/48</p> <p>HARCO 1350</p> <p>SR 116/5 20157861</p> <p>HARRIS 1322</p>	<p>WR CHALLENGER L230 RBC MISS PARTNER 390</p> <p>LJV VAQUERO 4/22 SR 549</p> <p>HARCO T958 (ET) T958 HARCO T148/5 (ET) T148/5</p> <p>HARCO T958 (ET) T958 T068/6</p>	<p>Bal Idx 2%</p> <p>C/C Idx 2%</p> <p>Term Idx 3%</p>
---	---	---

	BW	WW	YW	MILK	TM	SC	HCW	REA	MARB	TEND
EPDs	0.87	13.48	21.73	3.31	10.05	0.37	10.37	0.19	0.14	-0.02
Acc	.33	.45	.33	.28	--	.29	.28	.30	.44	.21
%Rank	85%	10%	4%	15%	--	50%	3%	1%	2%	10%

AI 6/25/21 to CA/RDF Mateo 7238 (20174206). NS 7/8/21 - 7/28/21 to SR 30/F6 (2018192). NS 7/29/21 - 8/25/21 to Wendt 9386 (20203887).

SR 40/20's pedigree is very interesting. She is line bred T958 on the bottom and by Mason himself. With that said, in the past 10 years T958 and Mason have been sires of more donor females than any other bulls in the breed. SR 40/20 sure has the EPD setup for it, posting 10 EPD traits in the top 50%. This female is a maternal sibling to the SR Rhino 27/19 bull owned by Wiley Ranch.



LOT 29



SR 45/20



20200257 • 45/20 • 3/6/2020 • • Bred Heifer

<p>KR 225/10</p> <p>KR CATALYST 531/15 20153484</p> <p>KR 310/12 2Y0</p> <p>LJV MASON 0/72</p> <p>SR 106/6 20167009</p> <p>TF 384</p>	<p>KR 230/08 KR 328/5 (ET) 328/5 F2</p> <p>KR 56/10 KR 15/09 F1 SR 710 LJV DOLLY 8/48</p> <p>4B-MR. BILLY RAY 337 TF 407</p>	<p>Bal Idx 1%</p> <p>C/C Idx 1%</p> <p>Term Idx 1%</p>
---	--	---

	BW	WW	YW	MILK	TM	SC	HCW	REA	MARB	TEND
EPDs	1.39	20.02	29.34	-7.09	2.92	0.52	12.94	0.22	0.29	-0.01
Acc	.32	.45	.34	.27	--	.30	.30	.31	.45	.21
%Rank	95%	2%	1%	99%	--	10%	2%	1%	1%	20%

AI 6/25/21 to KR X-Factor 912/18 (20183403). NS 7/8/21 - 7/28/21 to SR 30/F6 (2018192). NS 7/29/21 - 8/25/21 to Wendt 9386 (20203887).

Strong EPDs. SR 45/20 post 9 EPD traits in the top 20%. Catalyst x Mason is the back bone of Strait Ranches. Her dam has a 369 day average calving interval after 3 calves.



LOT 30



SR 46/20



20200258 • 46/20 • 3/7/2020 • • Bred Heifer

<p>KR 225/10</p> <p>KR CATALYST 531/15 20153484</p> <p>KR 310/12 2Y0</p> <p>CB WAR HAWK 4/5</p> <p>CB 801 20181514</p> <p>CB 422</p>	<p>KR 230/08 KR 328/5 (ET) 328/5 F2</p> <p>KR 56/10 KR 15/09 F1 FC PISTOL 28/0 HF ROSE 115/8</p> <p>CB BEAR 30/2 ALEXANDER 24/6</p>	<p>Bal Idx 3%</p> <p>C/C Idx 2%</p> <p>Term Idx 5%</p>
--	---	---

	BW	WW	YW	MILK	TM	SC	HCW	REA	MARB	TEND
EPDs	0.91	18.01	20.00	-5.16	3.84	0.42	8.34	0.16	0.07	0.02
Acc	.33	.45	.33	.26	--	.29	.29	.30	.43	.21
%Rank	85%	3%	5%	95%	--	35%	5%	2%	5%	95%

AI 6/25/21 to SR Mpac 30/F2 (20180821). NS 7/8/21 - 7/28/21 to SR 30/F6 (2018192). NS 7/29/21 - 8/25/21 to Wendt 9386 (20203887).

We purchased SR 46/20's dam CB 801 at the Houston Super Sale from Cotton Branch Plantation. CB 801 has become a front pasture cow in our program and currently has a calving interval of 334 days after 2 calves. This is the first Catalyst x War Hawk combination that we know of.



LOT 31





SR 48/20



20200260 • 48/20 • 3/8/2020 • • Bred Heifer

KR 225/10	KR 230/08	Bal Idx 6%
KR CATALYST 531/15	KR 328/5 (ET) 328/5 F2	
20153484	KR 56/10	C/C Idx 5%
KR 310/12 2YO	KR 15/09 F1	
LJV MASON 0/72	SR 710	Term Idx 7%
SR 8/5	LJV DOLLY 8/48	
20154753	MR CVF 2022	
SR 446 (ET) 446	KUDO'S GOLDIE 61	

	BW	WW	YW	MILK	TM	SC	H CW	REA	MARB	TEND
EPDs	0.88	10.78	18.64	-3.68	1.71	0.46	8.12	0.12	0.11	0.00
Acc	.32	.46	.35	.28	--	.30	.30	.33	.46	.21
%Rank	85%	10%	10%	90%	--	10%	5%	3%	3%	30%

AI 6/25/21 to SR M pact 30/F2 (20180821). NS 7/8/21 - 7/28/21 to SR 30/F6 (2018192). NS 7/29/21 - 8/25/21 to Wendt 9386 (20203887). Catalyst x Mason was a planned mating. SR 48/20 posts 9 EPD traits in the top 30%. Her dam SR 8/5 post a 377 day calving interval after 5 calves.



LOT 32



SR 60/20



20200269 • 60/20 • 3/12/2020 • • Bred Heifer

LJV MASON 0/72	SR 710	Bal Idx 3%
SR 27/6	LJV DOLLY 8/48	
20164694	MR WINROCK N127	C/C Idx 1%
SR ARKOMA 30/0	PERNER D 931	
HF FRED 303/9	CSC FRED 8-5	Term Idx 6%
RPV 69/6	SCC 5A4	
20167243	CSC COWBOY 51/4	
RPV 16/0	REYNOLDS PRAIRIE VIE 16/2	

	BW	WW	YW	MILK	TM	SC	H CW	REA	MARB	TEND
EPDs	-1.08	10.14	14.51	2.27	7.34	0.78	10.63	0.19	-0.07	0.03
Acc	.31	.43	.30	.24	--	.26	.26	.27	.42	.21
%Rank	20%	15%	10%	25%	--	2%	3%	1%	95%	99%

AI 6/25/21 to SR M pact 30/F2 (20180821). NS 7/8/21 - 7/28/21 to SR 30/F6 (2018192). NS 7/29/21 - 8/25/21 to Wendt 9386 (20203887). SR 60/20 is a real breeding canvas. Study her EPDs. She posts 9 EPD traits in the top 25% including SC, BW & Milk. This sets her up to mate well with a lot of the A.I. sires being used today. She is out of a Fred daughter as well. A lot of the early carcass genetics found trailed to Fred and his daughters.



LOT 33



SR 64/20



20200273 • 64/20 • 3/16/2020 • • Bred Heifer

LJV MASON 0/72	SR 710	Bal Idx 12%
SR GENESIS 75/3	LJV DOLLY 8/48	
20132516	MR WINROCK N127	C/C Idx 8%
SR ARKOMA 30/0	PERNER D 931	
RDF MACHO MAN 0088	RDF MACHO MAN 886/08	Term Idx 19%
SR 60/2	RDF LINDA 8127	
2.01201E+11	MR WINROCK N127	
SR 32/0	SR 447 (ET) 447	

	BW	WW	YW	MILK	TM	SC	H CW	REA	MARB	TEND
EPDs	-1.19	1.59	3.07	-2.79	-1.99	0.52	3.07	-0.01	-0.04	0.01
Acc	.33	.45	.32	.28	--	.29	.27	.29	.43	.21
%Rank	15%	40%	35%	90%	--	10%	20%	75%	90%	75%

AI 6/25/21 to KR X-Factor 912/18 (20183403). NS 7/8/21 - 7/28/21 to SR 30/F6 (2018192). NS 7/29/21 - 8/25/21 to Wendt 9386 (20203887). SR 64/20 lines up a maternal mating. Genesis x Macho Man was planned to make females. She records 8 EPD traits in the top 40%. Her dam SR 60/2 has done it all having 7 natural calves in 9 years.



LOT 34



SR 78/20



20200285 • 78/20 • 3/12/2020 • • Bred Heifer

KR 225/10	SR 230/08	Bal Idx 3%
20153484	KR 328/5 (ET) 328/5 F2	
KR 310/12 2Y0	KR 56/10	C/C Idx 7%
SR GENESIS 75/3	KR 15/09 F1	
	LJV MASON 0/72	Term Idx 2%
	SR ARKOMA 30/0	
SR 20/7	MR CVF 2022	
20170999	KUDO'S GOLDIE 61	
SR 446 (ET) 446		

	BW	WW	YW	MILK	TM	SC	HCW	REA	MARB	TEND
EPDs	0.33	2.16	0.88	-9.35	-8.27	0.30	-2.69	-0.01	0.54	0.00
Acc	.32	.46	.35	.27	--	.30	.30	.32	.45	.21
%Rank	75%	35%	40%	99%	--	70%	85%	65%	1%	30%

AI 6/25/21 to Harris Guns Up 216/5 (20152716). NS 7/8/21 - 7/28/21 to SR 30/F6 (2018192). NS 7/29/21 - 8/25/21 to Wendt 9386 (20203887).

SR 78/20 would rank as the #3 Marbling female in the entire Santa Gertrudis breed if we had a young female trait leader list. She posts a .54 Marbling EPD with a huge 45% accuracy. Her breeding has maternal written all through it going back to CVF 2022. SR 78/20's dam also sells in this year's sale and has a 363 day average calving interval after 3 calves.



LOT 35



SR 91/20



20200298 • 91/20 • 4/9/2020 • • Bred Heifer

LJV MASON 0/72	SR 710	Bal Idx 7%
20167254	LJV DOLLY 8/48	
SR T8 (ET)	HELLACIOUS 750	C/C Idx 3%
WENDT 7929	SR ISABELLA 557	
	WENDT 6445	Term Idx 14%
	WENDT 9297 ET 9297ET	
TWIN CREEK 506	FOUR J 98/129	
20144683	TRUE GERT CATTLE 681	
FOUR J 05/391		

	BW	WW	YW	MILK	TM	SC	HCW	REA	MARB	TEND
EPDs	0.31	11.88	15.05	-0.03	5.91	0.45	6.79	0.08	-0.06	-0.03
Acc	.29	.35	.22	.22	--	.25	.24	.20	.34	.21
%Rank	75%	10%	10%	60%	--	15%	10%	10%	95%	10%

AI 6/25/21 to CA/RDF Mateo 7238 (20174206). NS 7/8/21 - 7/28/21 to SR 30/F6 (2018192). NS 7/29/21 - 8/25/21 to Wendt 9386 (20203887).

SR 91/20 posts 8 EPD traits in top 15%. Since joining the Strait Ranches' herd, her dam, Twin Creek 506, has maintained a 372 day average calving interval after 5 calves.



LOT 36



SR 95/20



20200302 • 95/20 • 4/17/2020 • • Bred Heifer

LJV MASON 0/72	SR 710	Bal Idx 5%
20164694	LJV DOLLY 8/48	
SR ARKOMA 30/0	MR WINROCK N127	C/C Idx 7%
GRAY OAKS 338	PERNER D 931	
	MR DOUBLE TT WALKER	Term Idx 5%
	AJH 67/7	
WR 19/17	RED HOT 4010	
20170836	TF 723	
MISS GRANDVIEW 174		

	BW	WW	YW	MILK	TM	SC	HCW	REA	MARB	TEND
EPDs	-1.47	5.43	6.31	-2.05	0.66	0.52	6.97	0.12	0.01	0.00
Acc	.31	.43	.30	.23	--	.26	.26	.27	.42	.21
%Rank	10%	25%	25%	85%	--	10%	10%	3%	55%	20%

AI 7/16/21 to SR Marksman 33/19 (20190165). NS 7/26/21 - 8/25/21 to Wendt 9386 (20203887).

SR 95/20 should open some eyes of animal breeders out there. She posts 11 EPD traits in the top 55% of which 10 are in the top 25%. She needs to be mated to a sire with a little milk and marbling to fulfill the entire profile. Her Wiley Ranch dam WR 19/17 is really doing a great job here at Strait Ranches and has a 319 day average calving interval after 3 calves.



LOT 37





SR H06



20201524 • H06 • 5/10/2020 • Bred Heifer

SR 87/7

20171842

KR CATALYST 531/15

CTF QUIEN SABE'S BEAUTY

KILGORE 45/7

KILGORE 94/7

20172819

SILVA 949/4

KR 225/10

KR 310/12 2Y0

RED DOC 3150

RED DOC 3227

CHEEKS 2/4/0

KILGORE 45/1

RDF 1021 SMOOTH EYE 1021

JC 284/2

Bal Idx

13%

C/C Idx

9%

Term Idx

19%

	BW	WW	YW	MILK	TM	SC	HCW	REA	MARB	TEND
EPDs	0.11	3.40	4.88	-1.13	0.57	0.72	2.61	0.00	0.11	-0.01
Acc	.30	.35	.22	.21	--	.25	.24	.20	.33	.21
%Rank	70%	30%	30%	75%	--	2%	25%	55%	3%	15%

AI 7/16/21 to SR Mpack 30/F2 (20180821). NS 7/26/21 - 8/25/21 to Wendt 9386 (20203887).

SR H06 is a high performing female that puts together a balance in EPD across the board. Her AI mating to SR Mpack or natural service clean up to Wendt 9386 should lend to a superior calf.



SR 6/20



20200217 • 6/20 • 1/6/2020 • Bred Heifer

SR T17 (ET)

20132504

RDF SANCHO'S NEVER BEFORE

1136

SR HOLLY 033

AJH 12/0

SR 11/4

20141923

BRIGGS 553

RDF SANCHO 7-216

CA3194

GRIZZLY 3308

MISS DOUBLE TT 899

QT SHERMAN TANK (ET) 03/4

T.G. TOPANGA 450

NAF TIGER 3A3

BRIGGS 084/3

Bal Idx

75%

C/C Idx

80%

Term Idx

69%

	BW	WW	YW	MILK	TM	SC	HCW	REA	MARB	TEND
EPDs	0.47	-2.38	5.57	4.38	3.20	0.22	7.43	-0.03	-0.08	-0.01
Acc	.32	.44	.30	.27	--	.27	.27	.27	.42	.21
%Rank	80%	55%	30%	10%	--	85%	10%	85%	95%	15%

AI 4/17/21 to Red Doc Lumbre 8509 (20188237). NS 4/27/21 - 8/9/21 to Red Doc Rapid Progress 8046 (20182179).

SR 6/20 is out the same maternal line as Ms. Yancey 60/3. Her dam is a maternal sister to Ms. Yancey 60/3's dam.



LOT 39



SR 99/20



20201530 • 99/20 • 4/19/2020 • Bred Heifer

SR T41

20171844

KR 97/10

SR 837

LJV MASON 0/72

SR 40/6

20164704

SR 613

RDF 8052

KR N2/5 4A

SR 444

SR 613

SR 710

LJV DOLLY 8/48

WR CHALLENGER L230

SR 231

Bal Idx

1%

C/C Idx

3%

Term Idx

1%

	BW	WW	YW	MILK	TM	SC	HCW	REA	MARB	TEND
EPDs	-0.75	20.11	17.84	-3.86	6.19	-0.17	9.04	0.19	0.12	-0.03
Acc	.32	.44	.31	.25	--	.27	.28	.28	.43	.21
%Rank	40%	2%	10%	95%	--	99%	4%	1%	3%	10%

Straight Ranches is retaining one IVF collection of at least 6 embryos.

AI 7/16/21 to Red Doc Lumbre 8509 (20188237). NS 7/26/21 - 8/25/21 to Wendt 9386 (20203887).

SR 99/20 is a breeding piece for sure. Posting 9 EPD traits in the top 40% including BW. This young KR 97/10 son out of the SR 837 donor cow has produced excellent offspring. SR 99/20's dam has an average calving interval of 380 days after 4 calves.



LOT 40





SR 105/20



20201535 • 105/20 • 4/26/2020 • • Bred Heifer

KR 482/15	KR 781/13	Bal Idx 13%
	KR 34/08 1A	
KR1582/17	TOP GUN 244	C/C Idx 12%
20175788	KR 15R/07 F1	
KR 574/09 KR574/09 F2	RED DOC 3150	Term Idx 15%
RED DOC TRUMP 5127	RED DOC SABLE 3195	
SR 30/F1	MR WINROCK N127	
20180844	PERNER D 931	
SR ARKOMA 30/0		

	BW	WW	YW	MILK	TM	SC	HCW	REA	MARB	TEND
EPDs	-1.49	0.72	4.03	0.66	1.02	1.04	8.24	0.07	-0.05	0.00
Acc	.30	.44	.30	.23	--	.28	.27	.28	.43	.21
%Rank	10%	40%	30%	55%	--	1%	5%	10%	90%	25%

AI 7/16/21 to SR Mpatc 30/F2 (20180821). NS 7/26/21 - 8/25/21 to Wendt 9386 (20203887). SR 105/20 is a paternal sibling to several lots in this year's bull offering. She writes 8 EPD traits in the top 50% including a top 10% BW. Look at her EPD profile. She is in the top percentile in SC, BW, & Milk. This makes her a great breeding peace for many of today's A.I. sires.



LOT 41



SR 110/19



20195946 • 110/19 • 10/29/2019 • • Bred Heifer

LJV MASON 0/72	SR 710	Bal Idx 4%
	LJV DOLLY 8/48	
SR GENESIS 75/3	MR WINROCK N127	C/C Idx 7%
20132516	PERNER D 931	
SR ARKOMA 30/0	RED DOC 3026	Term Idx 3%
RED DOC SEGUARO 5043	RED DOC 3021	
SR AY 1701	HARCO T955 (ET) T955	
20175654	LINDH 506	
SYCAMORE 591		

	BW	WW	YW	MILK	TM	SC	HCW	REA	MARB	TEND
EPDs	-0.02	9.41	15.76	-3.25	1.46	0.56	8.14	0.10	0.09	0.01
Acc	.33	.44	.30	.25	--	.28	.26	.28	.41	.21
%Rank	65%	15%	10%	90%	--	4%	5%	5%	4%	75%

AI 2/3/21 to Red Doc Lumbr 8509 (20188237). NS 2/20/21 - 6/30/21 to SR 30/F6 (20181921). This Genesis 75/3 daughter SR 110/19 projects powerful EPDs writing 8 traits in the top 15%.



LOT 42



SR 120/19



20195960 • 120/19 • 11/7/2019 • • Bred Heifer

SR 710	WR CHALLENGER L230	Bal Idx 6%
	RBC MISS PARTNER 390	
LJV MASON 0/72	LJV VAQUERO 4/22	C/C Idx 4%
1290709	SR 549	
LJV DOLLY 8/48	D BAR J RED ROCK 400	Term Idx 9%
MR D BAR J ABEL 924	MISS D BAR J 483 (ET) 483	
SOLOMON'S MISS ABBIE	SR 8/0	
20158210	SR 866	
SR 25/3 MILLIE		

	BW	WW	YW	MILK	TM	SC	HCW	REA	MARB	TEND
EPDs	0.23	7.00	9.20	1.94	5.44	0.33	5.93	0.16	0.11	-0.01
Acc	.32	.45	.32	.28	--	.28	.28	.29	.44	.21
%Rank	70%	20%	20%	30%	--	60%	10%	2%	3%	15%

AI 2/3/21 to Red Doc Lumbr 8509 (20188237). NS 2/20/21 - 6/30/21 to SR 30/F6 (20181921).

Mason daughters have been the base of the Strait Ranches' program. Operations like Quail Valley Farms have seen the benefit of assembling Mason daughters to help build their program as well. With that said, nothing is guaranteed, but you just can't go wrong owning a female like SR 120/19. She projects very balanced EPDs as well as a strong phenotype. Her dam has a 370 day average calving interval after 4 calves.



LOT 43





SR 122/19



20195962 • 122/19 • 11/8/2019 • • Bred Heifer

KR 225/10	KR 230/08	Bal Idx 4%
KR CATALYST 531/15	KR 328/5 (ET) 328/5 F2	
20153484 KR 310/12 2YO	KR 56/10	C/C Idx 3%
GUNSLINGER 13/5	KR 15/09 F1	
	WR MAVERICK N113 ET N113	Term Idx 5%
	FAYE 10/2	
SR 41/0	KUBECKA 46	
1289184 BRIGGS 081/5	BRIGGS 079/3	

	BW	WW	YW	MILK	TM	SC	HCW	REA	MARB	TEND
EPDs	3.08	19.00	25.50	-8.86	0.64	0.49	7.41	0.06	0.20	0.00
Acc	.33	.47	.34	.30	--	.29	.30	.31	.44	.21
%Rank	99%	3%	2%	99%	--	10%	10%	10%	1%	20%

AI 2/2/21 to SR Mpac 30/F2 (20180821). NS 2/20/21 - 6/30/21 to SR 30/F6 (20181921). SR 122/19 writes 8 EPD traits in the top 10% including top 2% Hpreg and top 1% BBK. Her dam SR 41/0 has done it all for Strait Ranches. She has had nine natural calves for us.



LOT 44



SR 134/19



20195974 • 134/19 • 11/27/2019 • • Bred Heifer

KR 225/10	KR 230/08	Bal Idx 3%
KR CATALYST 531/15	KR 328/5 (ET) 328/5 F2	
20153484 KR 310/12 2YO	KR 56/10	C/C Idx 5%
SR T17 (ET)	KR 15/09 F1	
	RDF SANCHO'S NEVER BEFORE 1136	Term Idx 2%
	SR HOLLY 033	
SR 124/6	LJV VAQUERO 4/22	
20167318 LJV 1/81	SR 822	

	BW	WW	YW	MILK	TM	SC	HCW	REA	MARB	TEND
EPDs	0.55	5.54	12.05	-5.34	-2.57	0.34	9.41	0.10	0.37	-0.01
Acc	.31	.46	.33	.27	--	.29	.29	.31	.44	.21
%Rank	80%	25%	15%	95%	--	60%	4%	4%	1%	15%

AI 2/3/21 to Harris Guns Up 216/5 (20152716). NS 2/20/21 - 6/30/21 to SR 30/F6 (20181921).

SR 134/19 scanned an adjusted %IMF of 7.5 ratioing off the charts. This reflects in her Marbling EPD of .37 with a 44% accuracy. If you are wanting to put cattle in the top 1% of the top 1% then here is your donor that will do that. Her dam has a 350 day calving interval after 3 calves.



LOT 45



SR 29/20



20200240 • 29/20 • 2/15/2020 • • Bred Heifer

LJV MASON 0/72	SR 710	Bal Idx 3%
SR GENESIS 75/3	LJV DOLLY 8/48	
20132516 SR ARKOMA 30/0	MR WINROCK N127	C/C Idx 2%
BRIGGS 557/8	PERNER D 931	
	BRIGGS 030/5	Term Idx 8%
	BRIGGS 142/4	
BRIGGS646/13	BRIGGS 564/5	
20134241 BRIGGS 580/7	BRIGGS 542/5	

	BW	WW	YW	MILK	TM	SC	HCW	REA	MARB	TEND
EPDs	0.10	14.37	14.90	2.69	9.87	0.65	7.13	0.05	-0.06	0.01
Acc	.34	.46	.34	.28	--	.30	.27	.31	.45	.21
%Rank	70%	10%	10%	20%	--	3%	10%	15%	90%	80%

AI 6/25/21 to CA/RDF Mateo 7238 (20174206). NS 7/8/21 - 7/28/21 to SR 30/F6 (2018192). NS 7/29/21 - 8/25/21 to Wendt 9386 (20203887).

We believe SR Genesis 75/3 was made for Briggs cows. Everytime you cross him with Briggs blood lines you get a tremendous animal. SR 29/20 is out of one of our great Briggs Ranches cows who has a 365 day average calving interval after 6 calves. She writes 9 EPD traits in the top 30%.



LOT 46





SR MS PARADIGM 654/H2



20207592 • 654/H2 • 11/3/2020 • Open Heifer

KR CATALYST 531/15	KR 225/10	Bal Idx 7%
	KR 310/12 2YO	
SR PARADIGM 135/7		C/C Idx 10%
20175656 P H WELDER 7/342	P H WELDER 9/413	
	MISS GRANDVIEW 545	Term Idx 6%
	DEPUTY 3-138	
HELLACIOUS 750	EL CHAPARRAL GRANDE 0-146	
SR T1 (ET)		
201101005634 SR 654	YOGI 1562	
	BRIGGS 552/1	



**SR PARADIGM 135/7
SIRE OF LOT 47**

	BW	WW	YW	MILK	TM	SC	HCW	REA	MARB	TEND
EPDs	-0.24	9.94	3.76	-3.21	1.76	0.17	1.17	0.00	0.16	-0.04
Acc	.33	.38	.26	.26	--	.27	.25	.23	.36	.21
%Rank	60%	15%	35%	90%	--	90%	35%	60%	2%	4%

Strait Ranches is retaining one IVF collection of at least 6 embryos.
One of the first daughters to be sold by SR Paradigm 135/7 out of our SR T1 who is out of one of Strait Ranches' best cows ever, SR 654. SR T1 has a 364 day average calving interval after 8 calves.



LOT 48



SR MS MPACT 654/H



20207577 • 654/H • 10/2/2020 • Open Heifer

HARRIS 257/4	AJH 126/0	Bal Idx 3%
	HARRIS FARMS 037/2	
SR MPACT 30/F2		C/C Idx 6%
20180821 SR ARKOMA 30/0	MR WINROCK N127	
	PERNER D 931	Term Idx 2%
	KR 225/10	
KR CATALYST 531/15	KR 310/12 2YO	
SR 97/18		
20185084 SR T1 (ET)	HELLACIOUS 750	
	SR 654	

	BW	WW	YW	MILK	TM	SC	HCW	REA	MARB	TEND
EPDs	-1.33	5.99	10.24	-1.55	1.44	0.73	9.44	0.13	0.14	-0.01
Acc	.32	.36	.25	.22	--	.26	.25	.23	.36	.21
%Rank	15%	25%	20%	80%	--	2%	4%	3%	2%	20%

Strait Ranches is retaining one IVF collection of at least 6 embryos.

One of the first Mpact 30/F2 daughters to sale. We let Richard hand pick her out of the pasture. We know we shouldn't sale her, but it is time to show what a great job this young sire is doing. 10 EPD traits register in the top 20%. Her young dam, SR 97/18, is now a donor at Strait Ranches.





LOT 50



LOT 52



SR MS MPACT 09/H

20207535 • 09/H • 11/4/2020 • • Open Heifer



HARRIS 257/4	AJH 126/0 HARRIS FARMS 037/2	Bal Idx 11%
SR MPACT 30/F2 20180821	MR WINROCK N127 PERNER D 931	
SR ARKOMA 30/0	WHITE LIGHTNING F161 ROSE HILL 8/9	C/C Idx 24%
J & S HEISMAN		Term Idx 6%
ROSE HILL 6/9 20165082	BRIGGS 113/5 WENDT 8561	
TOWNSEND CATTLE 09/8		

	BW	WW	YW	MILK	TM	SC	HCW	REA	MARB	TEND
EPDs	-0.59	2.00	7.30	1.88	2.88	0.63	7.42	0.10	0.12	0.00
Acc	.31	.35	.23	.23	--	.25	.24	.21	.34	.21
%Rank	45%	35%	25%	30%	--	3%	10%	4%	2%	45%

Another Mpact 30/F2 daughter to sale. Again, we should not let her go. She is out of Rose Hill 6/9 who has a 371 day average calving interval after 3 calves.



SR MS WICKHAM 55/H

20207567 • 55/H • 11/5/2020 • • Open Heifer



KR CATALYST 531/15	KR 225/10 KR 310/12 2YO	Bal Idx 3%
SR 87/7 20171842	RED DOC 3150 RED DOC 3227	
CTF QUIEN SABE'S BEAUTY	RED DOC MULTIPLE SIRE MS RED DOC MULTIPLE DAM MD	C/C Idx 2%
RED DOC 2458		Term Idx 4%
KILGORE 84/6 20162165	KR RICARDO 182/02 PCR ANNIE 55/01	
PECAN CREEK EMERALD 84/5		

	BW	WW	YW	MILK	TM	SC	HCW	REA	MARB	TEND
EPDs	-0.72	10.21	8.85	-3.34	1.76	0.71	6.76	0.06	0.14	-0.02
Acc	.30	.35	.22	.21	--	.25	.25	.21	.34	.21
%Rank	40%	15%	20%	90%	--	2%	10%	10%	2%	15%

Everyone that comes by loves this Catalyst granddaughter SR 55/H. She records 10 EPD traits in the top 40%. She really needs a halter.



SR MS GENUINE 557/H

20207569 • 557/H • 8/12/2020 • • Open Heifer



SR GENESIS 75/3	LJV MASON 0/72 SR ARKOMA 30/0	Bal Idx 8%
SR GENUINE 69/6 20164735	RDF SANCHO'S NEVER BEFORE 1136 SR HOLLY 033	
SR HOLLY T19 (ET)	RDF SANCHO'S NEVER BEFORE 1136 P H WELDER 7/342	C/C Idx 14%
SR T22 (ET)		Term Idx 5%
SR 25/7 20171003	AL ZEUS 213 SR ISABELLA 557	
SR T13 (ET)		

	BW	WW	YW	MILK	TM	SC	HCW	REA	MARB	TEND
EPDs	0.48	12.07	17.66	-4.83	1.20	0.33	6.93	0.10	0.04	-0.02
Acc	.31	.38	.26	.23	--	.27	.25	.22	.35	.21
%Rank	80%	10%	10%	95%	--	60%	10%	4%	30%	10%

Fancy, Fancy, Fancy, is the best way to describe SR 557/H. She is by our senior herd sire SR Genuine 69/6 and has a balanced EPD profile.



SR MS 68F2 610/J

20211181 • 610/J • 1/10/2021 • • Open Heifer



KR CATALYST 531/15	KR 225/10 KR 310/12 2YO	Bal Idx 6%
SR 68/F2 20186389	RDF MACHO MAN 0088 BRIGGS 081/0	
SR 68/2	OLIVAREZ 3/520 OLIVAREZ 3/506	C/C Idx 11%
OR 6/641		Term Idx 4%
OR 8/850 20188030	OLIVAREZ 1/443 OLIVAREZ 0/373	
OLIVAREZ 6/610		

	BW	WW	YW	MILK	TM	SC	HCW	REA	MARB	TEND
EPDs	-0.77	4.00	7.47	-0.92	1.09	0.58	7.24	0.09	0.15	0.00
Acc	.27	.36	.23	.21	--	.25	.25	.21	.34	.21
%Rank	40%	30%	25%	75%	--	4%	10%	5%	2%	30%

This young heifer was bred for us to use in our herd. Crossing Catalyst and Olivarez works for us. This combination brings a complete outcross to the main line of the breed while maintaining superior carcass and maternal genetics.

LOT 53A - FLUSH OPPORTUNITY

KR 191/13 has certainly made a name for himself. As one of the most proven sires in the Santa Gertrudis breed; he has 332 calves in the SGBI registry; he is known for his beautiful and productive daughters, as well as his top performing sons. His offspring continue to dominate on gain tests and in consignment sales. As the years go by, his EPDs remain strong and very balanced. Here is a rare opportunity to flush your best cow with KR 191/13. We are guaranteeing 6 freezable embryos.



53A **KR 191/13** **GGP**
 20131196 • 191/13 • 3/22/2013 • Flush Opportunity

RDF 8052	KR 659/06	Bal Idx
	RDF 6-76	2%
KR 97/10	SUDDEN IMPACT 3R	C/C Idx
1288482	KR 58/001	3%
KR N2/5 4A	KUBECKA 1064	Term Idx
	ELBERTA 6 9070	3%
FIVE OAKS 29/0	MULTIPLE SIRE	
KR 517/04 1A	KR 8/644	
1251691		
KR 70/0		

	BW	WW	YW	MILK	TM	SC	HCW	REA	MARB	TEND
EPDs	1.44	12.94	18.42	-8.83	-2.36	-0.05	12.00	0.16	0.21	0.00
Acc	.52	.83	.69	.58	--	.67	.55	.65	.76	.23
%Rank	95%	10%	10%	99%	--	99%	2%	2%	1%	40%

Selling opportunity to flush the cow of your choice to either KR 191/13 or Hefte Ranch F14. Hefte Ranch will guarantee six (6) freezable embryos from the flush.

53B **HEFTE RANCH F14** **GGP**
 20175282 • F14 • 10/20/2017 • Polled • Flush Opportunity

RDF 8052	KR 800/11	Bal Idx
KR 307/06 4B		1%
Waukarau Gold Mine 6151	KR 921/15	C/C Idx
KR 23/001	20154201	1%
HARCO T956 (ET) T956	KR 110N/09 110/09 N6	Term Idx
HARCO T720 (ET) T720		1%
MR CVF 2022	HARCO 1323	
BRIGGS 046/1	HEFTE RANCH D140ET	
	20157775	
	BRIGGS 039/5	

	BW	WW	YW	MILK	TM	SC	HCW	REA	MARB	TEND
EPDs	-1.53	12.51	25.09	8.35	14.60	0.06	20.05	0.18	0.37	0.02
Acc	.50	.52	.38	.27	--	.41	.30	.35	.50	.23
%Rank	10%	10%	2%	2%	--	99%	1%	1%	1%	90%

Selling opportunity to flush the cow of your choice to either KR 191/13 or Hefte Ranch F14. Hefte Ranch will guarantee six (6) freezable embryos from the flush.

LOT 53B - FLUSH OPPORTUNITY

Hefte Ranch F14 started out simply as a clean up bull at Hefte Ranch. As you can see, the bull calves he produced on his first set of heifers really "wowed" us. We are using him extensively at Hefte Ranch and his ability to get cattle bred, produce low birth weight calves that wean heavy, and produce high performance cattle is impressive. With a great pedigree that combines KR 921/15, Harco 1323, and Briggs genetics, he is a Proven Sire Marbling Trait Leader who also brings REA, low BW and good growth to the table. F14 is a very clean made bull and we have found this bull really knocks it out of the park when paired with old school, big framed Santa Gertrudis females. We do not plan to sell semen on this bull in the short term, so don't miss this opportunity to try this Proven Sire Trait Leader on your favorite cow.





LOT 60

SR Paramount 30/H4 is a culmination of pretty much everything we have been trying to breed for at Strait Ranches. His pedigree combines the Santa Gertrudis breed's "super star" AI sire SR Paradigm 135/7 along with our matriarch donor cow Arkoma 30/0 who has a 359 day average calving interval after 10 calves. This makes SR Paramount 30H4 a maternal brother to the AI sire SR Genesis 75/3 as well as the 2019 Tried & True high selling bull SR MPact 30F2 owned by Vesper Ranch and 2020 Tried & True high selling bull SR Surge 4/19 owned by Wiley Ranch.



SR PARAMOUNT 30/H4



20200729 • 30/H4 • 1/12/2020 • Bull

KR CATALYST 531/15	KR 225/10	Bal Idx 1%
	KR 310/12 2YO	
SR PARADIGM 135/7 20175656	P H WELDER 7/342	C/C Idx 2%
	P H WELDER 9/413	
	MISS GRANDVIEW 545	Term Idx 1%
	MR WINROCK N127	
SR ARKOMA 30/0 1289177	PERNER D 931	
	CHF SAMBO 514	
	DOUBLE P RANCH 345	

	BW	WW	YW	MILK	TM	SC	HCW	REA	MARB	TEND
EPDs	-0.76	10.08	17.80	-3.58	1.46	1.12	12.99	0.15	0.25	0.00
Acc	.34	.39	.33	.27	--	.36	.26	.26	.44	.21
%Rank	40%	15%	10%	90%	--	1%	2%	2%	1%	40%

Selling 50% Semen Interest & Full Possession

Adj. BW 42 lbs., Adj. WW 531 lbs. Adj. YW 1,022 lbs. Adj. REA/CWT 1.31", Adj. %IMF 5.4, Adj. SC 36 cm



SR PARAGON 30/H8



20200730 • 30/H8 • 3/6/2020 • Bull

KR CATALYST 531/15	KR 225/10	Bal Idx 1%
	KR 310/12 2YO	
SR PARADIGM 135/7 20175656	P H WELDER 7/342	C/C Idx 2%
	P H WELDER 9/413	
	MISS GRANDVIEW 545	Term Idx 1%
	MR WINROCK N127	
SR ARKOMA 30/0 1289177	PERNER D 931	
	CHF SAMBO 514	
	DOUBLE P RANCH 345	

	BW	WW	YW	MILK	TM	SC	HCW	REA	MARB	TEND
EPDs	-1.09	8.94	14.63	-3.10	1.37	1.00	12.28	0.15	0.19	0.01
Acc	.34	.39	.33	.27	--	.37	.27	.27	.45	.21
%Rank	20%	15%	10%	90%	--	1%	2%	2%	1%	80%

SR Paragon 30/H8 is a full brother to SR Paramount 30/H4.

Adj. BW 47lbs, Adj. REA/CWT 1.3", Adj. SC 37 cm.



LOT 61





LOT 62

Sired by Hefte Ranch F14 and out of a first calf heifer, Hefte Ranch F124, Hefte Ranch H04 was the high scanning bull on the fall test, and actually the highest scanning bull we have produced with a 6.7%IMF and a 1.25 REA/cwt. He ratioed 144 for Marbling and 106 for Ribeye Area across all Hefte bulls on the fall gain test. We were so impressed by his performance that we immediately put him to work, and quite a few of the sale heifers are bred to him. His 61 lb. birthweight makes him a natural choice for heifers. H04 is chock full of proven genetics, with KR 921/15 and Harco 1323 on the sire side, AJH 126/0 and the outstanding Dunlap Harper "Liz" cow on his maternal side. Top 1% Marb, top 2% REA, top 4% for growth traits and top 10% for fertility traits, top 1% for all three indices - this bull brings it all! (Disclaimer: We want to be up front that H04 is a nervous bull. He definitely prefers to be on the other side of the pens from you than up close, and doesn't like to be sorted out by himself. Understandably, this bull will not work in some operations. We want everyone to be satisfied with their purchase, and that begins with knowing what you are buying.)



HEFTE RANCH H04

20197596 • H04 • 10/1/2019 • Scur • Bull



KR 921/15	KR 800/11	Bal Idx 1%
HEFTE RANCH F14 20175282	KR 110N/09 110/09 N6	
HEFTE RANCH D140ET	HARCO 1323	
AJH 126/0	BRIGGS 039/5	
HEFTE RANCH F124 20175364	CHAPS 372	Term Idx 1%
HEFTE RANCH Z60	DOUBLE E 8T39	
	SJ JESTER 911	
	LIZ 07/02	

	BW	WW	YW	MILK	TM	SC	HCW	REA	MARB	TEND
EPDs	-0.72	16.21	20.26	4.11	12.21	0.00	11.77	0.15	0.27	0.02
Acc	.40	.44	.31	.23	--	.27	.27	.27	.43	.21
%Rank	40%	4%	4%	15%	--	99%	2%	2%	1%	90%

Hefte Ranch will retain a semen interest for "in herd" use, all marketable semen rights go to the buyer.

Adj. BW 60 lbs., Adj. WW 591 lbs., Adj. YW 1065 lbs., Adj. %IMF 6.7, Adj. SC 33 cm





LOT 63

This Hefte Ranch D25 son is ALL BULL - from his looks to his performance. If you want weaning weights, if you want yearling weights, if you want marbling and ribeye, if you want replacement heifers - this is your bull! This bull's full sister was the only heifer to comparatively wean "with the bulls" in 2019, not to mention she had a 13.4" REA and a 6%IMF. These genetics are real and they will perform for you. H143's dam is Red Doc 2029, a powerhouse of a cow that we purchased at the 2015 Super Sale. This RDF Sancho daughter has a 358 day calving interval and her 6 calves have posted an average adj weaning weight of 650 lbs. H143 scanned over a 5%IMF. Seven traits ranked in the top 2% and under, top 1% in all indices. A lot of power in a gentle package, don't miss this high performance bull.



HEFTE RANCH H143



20202564 • H143 • 2/22/2020 • Polled • Bull

HEFTE RANCH D25

20160227

HARCO 1323

HEFTE RANCH A88

RDF SANCHO 7-216

RED DOC 2029

201201003792

RED DOC MULTIPLE DAM MD

HARCO T956 (ET) T956
HARCO T720 (ET) T720

SJ TANKER 818
MANITOU IV 54/07
RDF LAURELES149/03
CB 1509

RED DOC MULTIPLE SIRE MS
RED DOC MULTIPLE DAM MD

BalIdx
1%

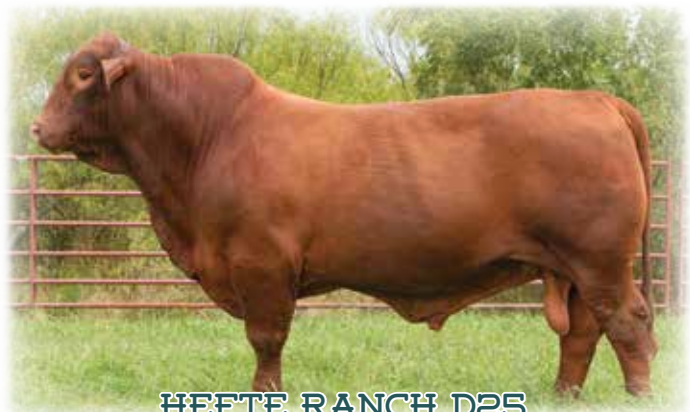
C/CIdx
1%

TermIdx
1%

	BW	WW	YW	MILK	TM	SC	HCW	REA	MARB	TEND
EPDs	1.02	23.14	33.66	3.14	14.71	0.80	16.36	0.20	0.13	0.02
Acc	.33	.46	.33	.26	--	.35	.27	.27	.45	.21
%Rank	90%	1%	1%	20%	--	2%	1%	1%	2%	90%

Hefte Ranch will retain a semen interest for "in herd" use, all marketable semen rights go to the buyer.

Adj. WW 599 lbs., Adj. YW 1240 lbs., Adj. REA 14.3", Adj. %IMF 5.1, Adj. SC 38 cm



HEFTE RANCH D25
SIRE OF LOT 63





LOT 64

SR Strategist 32/20 is a maternal brother to the young AI sire SR Marksman 33/19 that we jointly own with Quail Valley Farms. His fertile dam Red Doc 6054 has made her way into our donor herd and maintains a 349 day average calving interval after 4 natural calves. SR Strategist 32/20's sire LJV Mason 072 really makes this bull an interesting breeding piece considering the consistency of Mason's offspring that have been used in herds like Briggs, Harris and Quail Valley Farms.



SR STRATEGIST 32/20



20200244 • 32/20 • 2/3/2020 • • Bull

SR 710
 WR CHALLENGER L230
 RBC MISS PARTNER 390

LJV MASON 072
 1290709 LJV DOLLY 8/48
 LJV VAQUERO 4/22
 SR 549

RED DOC SI SABE 3106
 RDF QUIEN SABE 0120
 RDF BONITA 8017

RED DOC 6054
 20165208 RED DOC 4032
 RDF SANCHO'S NEVER BEFORE 1136
 RED DOC 8168

Bal Idx
1%

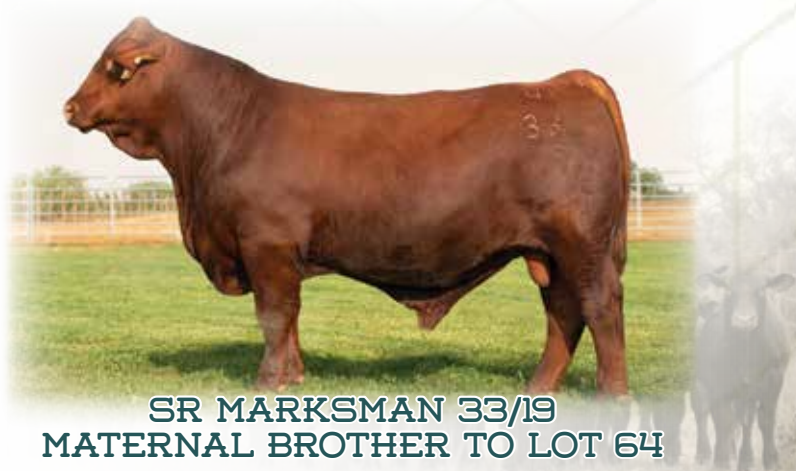
C/C Idx
1%

Term Idx
2%

	BW	WW	YW	MILK	TM	SC	HCW	REA	MARB	TEND
EPDs	-0.62	13.02	20.53	0.26	6.77	0.66	14.19	0.23	0.07	-0.02
Acc	.35	.45	.30	.29	--	.35	.28	.28	.37	.21
%Rank	45%	10%	4%	60%	--	3%	1%	1%	10%	15%

Selling 50% Semen Interest & Full Possession

Adj. REA 15.1, Adj. REA/CWT 1.3, Adj. SC 34 cm



SR MARKSMAN 33/19
 MATERNAL BROTHER TO LOT 64





LOT 65



SR JACK 41/H2

20200312 • 41/H2 • 2/3/2020 • Bull

KR 482/15
KR1582/17
 20175788
 KR 574/09 KR574/09 F2
 KR CATALYST 531/15
SR 41/18
 20180859
 SR 20/5

KR 781/13
 KR 34/08 1A
 TOP GUN 244
 KR 15R/07 F1
 KR 225/10
 KR 310/12 2YO
 LJV MASON 0/72
 SR 611



Bal Idx
 2%
C/C Idx
 6%
Term Idx
 1%

	BW	WW	YW	MILK	TM	SC	HCW	REA	MARB	TEND
EPDs	1.12	9.11	27.56	-1.42	3.14	0.73	14.03	0.18	0.24	-0.03
Acc	.28	.38	.31	.22	--	.35	.27	.43	.43	.21
%Rank	90%	15%	2%	80%	--	2%	1%	1%	1%	5%

Selling 50% Semen Interest & Full Possession

SR Jack 41/H2 and his brother are proof that one can line up moderate genetics and still maintain powerful growth genetics. He ranks in the top 15% or better for 10 EPD traits.

Adj. WW 522 lbs. Adj. YW 1277 lbs. Adj. REA 15.7" Adj. REA/CWT 1.23" Adj. %IMF 5.20 and Adj. SC 36 cm



SR 41/H1

20200254 • 41/H1 • 2/2/2020 • Bull

KR 482/15
KR1582/17
 20175788
 KR 574/09 KR574/09 F2
 KR CATALYST 531/15
SR 41/18
 20180859
 SR 20/5

KR 781/13
 KR 34/08 1A
 TOP GUN 244
 KR 15R/07 F1
 KR 225/10
 KR 310/12 2YO
 LJV MASON 0/72
 SR 611



Bal Idx
 3%
C/C Idx
 3%
Term Idx
 4%

	BW	WW	YW	MILK	TM	SC	HCW	REA	MARB	TEND
EPDs	0.53	10.24	13.49	-2.66	2.46	0.38	7.85	0.12	0.17	-0.03
Acc	.28	.38	.31	.22	--	.35	.27	.27	.43	.21
%Rank	80%	15%	15%	85%	--	50%	5%	3%	2%	10%

Full brother to SR 41/H2. These two brothers are "peas in a pod".

Adj WW 601 lbs. Adj REA 13.2" Adj REA/CWT 1.28" Adj SC 31 cm




LOT 66






LOT 67

This KR 191/13 son certainly has eye appeal! His sire needs no introduction and his dam, Hefte Ranch A78 has been a prolific producer with 7 calves produced in 8 years and an amazing 343 day calving interval. Hefte Ranch H130 weaned with an adj WW of 708 lbs. This bull won't have any trouble catching the attention of a herd of cows, or the eyes of onlookers as you show him off in your pasture. He is "suave" as he struts across the pasture, but he still sports the power and mass that makes you say, "Now that's a Bull!"



KR 191/13
20131196

HEFTE RANCH H130
20197373 • H130 • 12/8/2019 • Scur • Bull



<p>KR 97/10</p> <p>KR 517/04 1A</p> <p>SJ TANKER 818</p> <p>HEFTE RANCH A78 20130237</p> <p>CRISTI 73/07</p>	<p>RDF 8052 KR N2/5 4A</p> <p>FIVE OAKS 29/0 KR 70/0</p> <p>SJ HAWK'S HUMMER 3/H2 SJ LADY MARIE 655</p> <p>2S RANCH 4154 BROADMOOR 35/6</p>	<p>Bal Idx 12%</p> <p>C/C Idx 13%</p> <p>Term Idx 12%</p>
---	---	--



KR 191/13
SIRE OF LOT 67

	BW	WW	YW	MILK	TM	SC	HCW	REA	MARB	TEND
EPDs	0.86	12.10	12.60	-5.17	0.88	0.16	5.73	0.05	0.05	0.01
Acc	.32	.45	.33	.30	--	.35	.31	.31	.44	.21
%Rank	85%	10%	15%	95%	--	90%	10%	15%	10%	90%

Hefte Ranch will retain a semen interest for "in herd" use, all marketable semen rights go to the buyer.

Adj. WW 708 lbs., Adj. YW 1113 lbs., Adj. REA/CWT 1.2, Adj. SC 36 cm

68

HEFTE RANCH H83



20202516 • H83 • 1/20/2020 • Scur • Bull

HEFTE RANCH F14

20175282 HEFTE RANCH D140ET

KR 921/15

HEFTE RANCH F79

20176959 HEFTE RANCH 726

KR 800/11
KR 110N/09 110/09 N6

HARCO 1323
BRIGGS 039/5
KR 97/10
KR 131/04 F2

MR DOUBLE TT CROOKHORN 190
HEFTE RANCH 642

Bal Idx
1%

C/C Idx
2%

Term Idx
1%

	BW	WW	YW	MILK	TM	SC	HCW	REA	MARB	TEND
EPDs	0.16	15.89	20.62	4.19	12.14	0.14	9.93	0.10	0.15	0.01
Acc	.39	.44	.30	.23	--	.33	.27	.27	.43	.21
%Rank	70%	4%	4%	10%	--	95%	3%	4%	2%	75%

This bull is as unique as the birthmark on his shoulder. An impressive Hefte Ranch F14 son out of a first calf heifer, Hefte Ranch F79, H83 is a stout bull that crosses KR 921/15 and KR 97/10 bloodlines. If you are looking for something proven, but a little different, this bull will fit the bill. Not to mention, his dam is one of the most eye appealing, perfect udder-ed cows in our pasture. This bull posted an adj. WW of 641 lbs and ratioed at 112 among his contemporaries. Impressive EPDs across the board, including top 2% MARB and top 4% REA.

Adj. BW 67 lbs., Adj. WW 641 lbs., Adj. YW 1246 lbs., Adj. REA 14.3", Adj. SC 33 cm



LOT 68

69

HEFTE RANCH H78



20202518 • H78 • 1/19/2020 • Polled • Bull

HEFTE RANCH F14

20175282 HEFTE RANCH D140ET

HEFTE RANCH D10

HEFTE RANCH F97

20183789 HEFTE RANCH C52

KR 800/11
KR 110N/09 110/09 N6

HARCO 1323
BRIGGS 039/5
HARCO 1323
HEFTE W82

CB BEAR 30/2
HEFTE RANCH A30

Bal Idx
8%

C/C Idx
10%

Term Idx
8%

	BW	WW	YW	MILK	TM	SC	HCW	REA	MARB	TEND
EPDs	-0.31	3.77	14.84	5.44	7.32	0.55	11.51	0.12	0.06	0.04
Acc	.39	.44	.30	.22	--	.34	.26	.26	.43	.21
%Rank	55%	30%	10%	10%	--	5%	2%	3%	10%	99%

Another impressive Hefte Ranch F14 son out of a first calf heifer, Hefte Ranch F97. Hefte Ranch H78 is the softer, deeper-sided of the three F14 sons we are offering. His dam, Hefte Ranch F97 is a moderate, soggy cow that we would'nt mind our replacements resembling. There is a lot to like about this potential heifer bull (he had a 65 lb. BW), in addition, he has a good disposition and is easy to handle.

Adj. BW 63 lbs., Adj. YW 1172 lbs., Adj. REA 13.9", Adj. SC 33 cm



LOT 69



HEFTE RANCH F14
SIRE OF LOTS 62, 68 & 69





SR 191 634/H2

20200732 • 634/H2 • 3/12/2020 • • Bull



KR 97/10	RDF 8052	Bal Idx 3%
	KR N2/5 4A	
KR 191/13	FIVE OAKS 29/0	C/C Idx 12%
20131196	KR 70/0	
	YOGI 1562	Term Idx 2%
LR CODE RED 45/353	CB 2353	
SILVA 634/7	OLIVAREZ RANCHES 9/836	
1278955	SILVA 1X257/9	
SILVA 2X257/1		

	BW	WW	YW	MILK	TM	SC	HCW	REA	MARB	TEND
EPDs	0.98	16.54	27.09	-4.04	4.23	-0.24	17.81	0.13	0.17	-0.01
Acc	.34	.41	.36	.30	--	.39	.32	.32	.46	.21
%Rank	90%	4%	2%	95%	--	99%	1%	3%	2%	15%

Selling 50% Semen Interest & Full Possession

SR 634/H2 is out of the breed's matriarch donor cow Silva 634/7 who is the dam of the famous \$500,000 revenue generating 915 cow family owned in part over the years by Pitchford Cattle, Quail Valley Farms and Corparron Acres. 634/7 was truly one of the great cows in breed history! With that said, SR 634/H2's sire KR 191/13 has been one of the most sought after sires as the breed turns toward carcass. His semen set record pricing in the Tried & True sale bringing over \$1,500 per straw.

Adj. BW 45 lbs. Adj. YW 1,053 lbs. Adj REA 13.6" Adj. REA/CWT 1.29" Adj. %IMF 4.40, Adj SC 35 cm



LOT 70



SR 634/G3

20196000 • 634/G3 • 9/2/2019 • • Bull



KR 225/10	KR 230/08	Bal Idx 2%
	KR 328/5 (ET) 328/5 F2	
KR CATALYST 531/15	KR 56/10	C/C Idx 6%
20153484	KR 15/09 F1	
	YOGI 1562	Term Idx 1%
LR CODE RED 45/353	CB 2353	
SILVA 634/7	OLIVAREZ RANCHES 9/836	
1278955	SILVA 1X257/9	
SILVA 2X257/1		

	BW	WW	YW	MILK	TM	SC	HCW	REA	MARB	TEND
EPDs	1.45	19.80	27.85	-6.83	3.07	-0.09	14.35	0.09	0.38	-0.02
Acc	.33	.46	.31	.29	--	.39	.30	.30	.40	.21
%Rank	95%	2%	2%	99%	--	99%	1%	10%	1%	15%

KR Catalyst 531/15 x Silva 634/7. Push the limits!!!!

.39 IMF EPD, Reports 8 EPD traits in the top 15%.



LOT 71



SR SANCHO 634/G10

20196490 • 634/G10 • 11/19/2019 • • Bull



RDF LAURELES149/03	MULTIPLE SIRE	Bal Idx 5%
	KR 5/812	
RDF SANCHO 7-216	MOUNTAIN GRIZZLY 7316	C/C Idx 18%
1269953	CB 7347	
	YOGI 1562	Term Idx 2%
LR CODE RED 45/353	CB 2353	
SILVA 634/7	OLIVAREZ RANCHES 9/836	
1278955	SILVA 1X257/9	
SILVA 2X257/1		

	BW	WW	YW	MILK	TM	SC	HCW	REA	MARB	TEND
EPDs	1.21	19.60	33.56	-1.22	8.58	-0.43	17.74	0.10	0.02	-0.01
Acc	.41	.46	.34	.30	--	.37	.28	.28	.45	.21
%Rank	90%	2%	1%	75%	--	99%	1%	4%	50%	20%

Full sibling mating to the famous "six sisters" made in one flush, or sometimes better known as the "9 hundred series sibs". One of those sibs, 915/3 who is currently owned by Corparron Acres went on to become a trait leader in REA. She has impressively generated over \$350,000 in revenue and has produced a National Champion Bull.

Adj. %IMF 4.8, Adj. REA/CWT 1.16"



LOT 72





SR ENDEAVOR 93/20



20200300 • 93/20 • 4/13/2020 • Bull

LJV MASON 0/72	SR 710	Bal Idx 2%
	LJV DOLLY 8/48	
SR GENESIS 75/3		C/C Idx 3%
20132516	MR WINROCK N127	
SR ARKOMA 30/0	PERNER D 931	Term Idx 2%
	RDF QUIEN SABE 0120	
RED DOC 3150	RDF 9020	
CTF QUIEN SABE'S BEAUTY		
20154810	SR 58/0	
RED DOC 3227	RDF 1166	

	BW	WW	YW	MILK	TM	SC	HCW	REA	MARB	TEND
EPDs	-0.97	8.08	15.04	-0.90	3.13	0.59	11.81	0.12	0.09	0.00
Acc	.34	.45	.32	.26	--	.38	.27	.27	.43	.21
%Rank	20%	20%	10%	75%	--	4%	2%	3%	4%	45%

Selling 50% Semen Interest & Full Possession

Planned genetics to make females for the next generation. The elite side of Red Doc Farms genetics, paired with AI trait leader SR Genesis 75/3. He ranks in the top 45% for 11 traits and top 20% for 10 including top 20% BW. Dam, 5287, has a 352 day average calving after five calves.

Adj. WW 615 lbs., Adj. REA/CWT 1.2" Adj. %IMF 4.3 Adj. SC 35 cm.



HEFTE RANCH H02



20197520 • H02 • 10/7/2019 • Polled • Bull

LJV MASON 0/72	SR 710	Bal Idx 1%
	LJV DOLLY 8/48	
SR GENESIS 75/3		C/C Idx 1%
20132516	MR WINROCK N127	
SR ARKOMA 30/0	PERNER D 931	Term Idx 1%
	RDF QUIEN SABE 0120	
RED DOC 3162	RDF 5-27	
HEFTE RANCH F38		
20175362	SJ TANKER 818	
HEFTE RANCH A88	MANITOU IV 54/07	

	BW	WW	YW	MILK	TM	SC	HCW	REA	MARB	TEND
EPDs	-0.80	13.12	16.68	-0.65	5.91	0.35	8.24	0.05	0.23	0.01
Acc	.41	.46	.33	.27	--	.34	.27	.27	.44	.21
%Rank	35%	10%	10%	70%	--	55%	5%	15%	1%	85%

Combining genetics from SR Genesis, D25 and Red Doc 3162 was everything we hoped it would be! Sired by SR Genesis 75/3 and out of a first calf heifer, Hefte Ranch F38 (a maternal half sib to our herd sire, Hefte Ranch D25), it is hard not to admire this bull's performance. He scanned a whopping 5.89%IMF with only .20 BF. He has a very balanced and phenomenal EPD set with excellent maternal genetics in his pedigree. Eight traits ranked top 15% or better, including top 1% MARB, top 2% BackFat and top 1% HPREG. This bull has performed extremely well since day one and we are excited to see what he can do in your program.

Adj. BW 64 lbs., Adj. WW 561 lbs., Adj. %IMF 5.9



LOT 74



HEFTE RANCH H40



20201435 • H40 • 1/1/2020 • Polled • Bull

HARCO 1323	HARCO T956 (ET) T956	Bal Idx 8%
	HARCO T720 (ET) T720	
HEFTE RANCH D25		C/C Idx 6%
20160227	SJ TANKER 818	
HEFTE RANCH A88	MANITOU IV 54/07	Term Idx 11%
	RDF SANCHO'S NEVER BEFORE 1136	
RED DOC NEVER SANK 5012	RED DOC 3001	
HEFTE RANCH F13		
20175255	RPV 7/0 RPV7/0	
HEFTE RANCH D141ET	LIZZY 54/06	

	BW	WW	YW	MILK	TM	SC	HCW	REA	MARB	TEND
EPDs	1.06	12.92	16.74	0.48	6.94	0.26	6.24	0.05	0.00	0.01
Acc	.40	.45	.33	.24	--	.34	.26	.26	.44	.21
%Rank	90%	10%	10%	55%	--	80%	10%	15%	65%	80%

If we had to pick a bull to make show heifers, Hefte Ranch H40 is that bull. Deep-sided, great muscle and dimension, not to mention a proven winning pedigree. Hefte Ranch D25 and Never Sank 5012 is a very successful cross. The first D25 x Never Sank heifer calf was sold at last year's Tried & True Sale to the Wunderlich Family, this year, she was Reserve Champion at the National Junior Show for Calvin Wunderlich. In addition, he boasts 6 EPD traits in the top 15%. These genetics are real.

Adj. BW 73 lbs., Adj. WW 643 lbs., Adj. YW 1164, Adj REA 15.2", Adj. REA/cwt 1.3, Adj. %IMF 4.6



LOT 75



LOT 76

A fancy, yet muscular bull sired by Hefte Ranch D25 and out of first calf heifer, Hefte Ranch F55. This bull's pedigree is full of proven functional, perfect udder-ed females from Hefte Ranch. Grand dams, A88 and B33 have both been selected as donor females in our program. Let us know if you want to see more of these impressive cows, we would love to show them off. He has 6 EPD traits that rank in the top 3%! With his strong pedigree and admirable EPD set, we think this bull will produce awesome replacement females as well as future herd sires.



HEFTE RANCH H12

20197519 • H12 • 10/28/2019 • Polled • Bull



HARCO 1323	HARCO T956 (ET) T956	Bal Idx 1%
	HARCO T720 (ET) T720	
HEFTE RANCH D25 20160227	SJ TANKER 818	C/C Idx 1%
HEFTE RANCH A88	MANITOU IV 54/07	
RED DOC 3162	RDF QUIEN SABE 0120	Term Idx 2%
	RDF 5-27	
HEFTE RANCH F55 20176958	HEFTE'S YAK Y42	
HEFTE RANCH B33	HEFTE RANCH Z01	

	BW	WW	YW	MILK	TM	SC	HCW	REA	MARB	TEND
EPDs	0.30	20.56	30.20	5.45	15.73	0.64	15.13	0.17	-0.02	0.02
Acc	.39	.46	.32	.25	--	.33	.26	.26	.44	.21
%Rank	75%	2%	1%	10%	--	3%	1%	1%	80%	95%

Adj. BW 67 lbs., Adj. WW 595 lbs., Adj. YW 1101 lbs., Adj. SC 32 cm



HEFTE RANCH H45

20197602 • H45 • 12/6/2019 • Polled • Bull



HARCO 1323	HARCO T956 (ET) T956	Bal Idx 3%
	HARCO T720 (ET) T720	
HEFTE RANCH D25 20160227	SJ TANKER 818	C/C Idx 3%
HEFTE RANCH A88	MANITOU IV 54/07	
SJ JESTER 911	SJ HAWK'S HUMMER 3/H2	Term Idx 5%
	BRIGGS RANCH 008/7	
HEFTE RANCH C98 20146099	HEFTE RANCH 932	
HEFTE RANCH 229	HEFTE RANCH 705	

	BW	WW	YW	MILK	TM	SC	HCW	REA	MARB	TEND
EPDs	0.56	14.51	20.44	1.42	8.68	0.20	11.24	0.19	0.04	0.02
Acc	.31	.46	.34	.26	--	.36	.27	.27	.46	.21
%Rank	80%	10%	4%	35%	--	90%	3%	1%	15%	90%

If you want power in your bull calves and deep, soggy females, pay attention to Hefte Ranch H45. If you don't like excessive amounts of scale pressing guts and muscle in your calves, this bull is probably not for you. Another superb and gentle Hefte Ranch D25 son out of Hefte Ranch C98. C98, who has been promoted to donor status, consistently produces some of the heaviest weaning and top scanning calves on the place. She has a perfect calving interval of 365 days with 5 natural calves on the ground, in addition, those calves have averaged 638 lbs at weaning. Hefte Ranch H45 scanned a 1.3 REA/cwt and is ranked top 1% REA. A notable EPD set with 7 traits in the top 15% combining growth, carcass and fertility.

Adj. WW 644 lbs., Adj. REA 14.7", Adj. %IMF 4.6, Adj. SC 33 cm



LOT 77



78

HEFTE RANCH H47

GGP

20202558 • H47 • 1/11/2020 • Horn • Bull

KR 191/13

20131196

KR 97/10

KR 517/04 1A

HF FRED 445/2

HEFTE RANCH C53

20154674

SR T12 (ET)

RDF 8052

KR N2/5 4A

FIVE OAKS 29/0

KR 70/0

CSC FRED 8-5

SCC 5A4

AL ZEUS 213

SR ISABELLA 557

Bal Idx

18%

C/C Idx

14%

Term Idx

25%

	BW	WW	YW	MILK	TM	SC	HCW	REA	MARB	TEND
EPDs	0.35	2.02	-5.19	-5.28	-4.26	0.34	-3.58	0.05	0.20	0.03
Acc	.32	.46	.34	.29	--	.36	.32	.32	.45	.21
%Rank	75%	35%	65%	95%	--	60%	90%	15%	1%	99%

We think a lot of this bull. His dam is a fancy, moderate Strait bred cow with a perfect udder, and we think he looks alot like his sire, KR 191/13.

On his dam's side he goes back to AL Zues and SR Isabella. He scanned a

1.2 REA/cwt and has a top 1% Marb EPD. If you need to moderate you cow herd, while keeping marbling and thickness, H47 is the bull of your dreams.

Proven show pedigrees that also have performance are hard to find....keep an eye on this one he might be a deal.

Adj. WW 515 lbs., Adj. YW 1063 lbs., Adj. REA 14.6", Adj. BF .20, Adj. SC 33 cm



LOT 78

79

HEFTE RANCH H80

GGP

20202520 • H80 • 1/12/2020 • Scur • Bull

HEFTE RANCH D25

20160227

HARCO 1323

HEFTE RANCH A88

RED DOC 3162

HEFTE RANCH F80

20176960

HEFTE RANCH A30

HARCO T956 (ET) T956

HARCO T720 (ET) T720

SJ TANKER 818

MANITOU IV 54/07

RDF QUIEN SABE 0120

RDF 5-27

HARRIS FARM 12/8(WAVE MAKER) 12/8

CINDERELLA 9-42

Bal Idx

1%

C/C Idx

1%

Term Idx

1%

	BW	WW	YW	MILK	TM	SC	HCW	REA	MARB	TEND
EPDs	-0.67	17.83	18.79	1.38	10.30	0.06	11.74	0.11	0.12	0.02
Acc	.39	.45	.33	.24	--	.34	.26	.26	.44	.21
%Rank	40%	3%	5%	35%	--	99%	2%	3%	3%	90%

A curve bender bull sired by Hefte Ranch D25 and out of a first calf heifer, Hefte Ranch F80. Check out his 59 lb BW and his 620 lb adj. WW! His

star-studded pedigree includes Harco 1323, Red Doc 3162, Wavemaker and Cinderella. H80 is long and lean, like a true athlete. Fat is not hiding anything on this D24 son, what you see is what get, and that's a lot of beef!

Awesome EPDs across the board and top 1% indices. This bull has 8 EPD traits in the top 20% including top 3% for both REA and MARB as well as top 2% for HPREG.

Adj. BW 57 lbs., Adj. WW 620 lbs., Adj. YW 1158, Adj. REA 13.8", Adj. %IMF 4.5, Adj. BF .20



LOT 79

80

SR 97/20

GGP

20201529 • 97/20 • 4/18/2020 • • Bull

SR GENUINE 69/6

20164735

SR GENESIS 75/3

SR HOLLY T19 (ET)

RED DOC DINERO 4088

RED DOC 7234

20174121

RED DOC 4030

LJV MASON 0/72

SR ARKOMA 30/0

RDF SANCHO'S NEVER BEFORE 1136

SR HOLLY 033

KR 189/11

RDF BONITA 8017

HF FRED 390/1

RDF 0299

Bal Idx

2%

C/C Idx

6%

Term Idx

1%

	BW	WW	YW	MILK	TM	SC	HCW	REA	MARB	TEND
EPDs	0.17	12.53	22.53	-0.64	5.63	0.64	11.80	0.21	0.24	-0.01
Acc	.33	.44	.31	.23	--	.36	.27	.27	.43	.21
%Rank	70%	10%	3%	70%	--	3%	2%	1%	1%	20%

SR Genuine 69/6 son. Powerful young bull here with Breed average Milk.

Right where you want to be to make keeping heifers.

Adj. WW 637 lbs. Adj. SC 38 cm Adj. REA/CWT 1.19"



LOT 80



SR 74/20



20200282 • 74/20 • 3/26/2020 • Bull

KR 482/15	KR 781/13	Bal Idx 16%
	KR 34/08 1A	
KR1582/17	TOP GUN 244	C/C Idx 21%
20175788	KR 15R/07 F1	
	A-1 OUTSIDER 5261	Term Idx 14%
IRON OAKS OUTSIDER	IO 4J	
SR 801	HARCO 1350	
20180856	HARRIS 1322	
SR 116/5		

	BW	WW	YW	MILK	TM	SC	HCW	REA	MARB	TEND
EPDs	1.37	5.35	13.42	4.10	6.78	0.56	4.72	0.04	0.09	-0.01
Acc	.29	.36	.24	.21	--	.36	.25	.25	.35	.21
%Rank	95%	25%	15%	15%	--	4%	15%	15%	4%	15%

KR 1582/17 son. Paternal brother to 41H2 and 41H1. His dam SR 801 is a maternal sister to SR Rhino 27/19, who was purchased in the 2020 Tried & True Sale by Wiley Ranch. Lines up 10 EPD traits in the top 30% including top 10% Milk

Adj. WW 658 lbs. Adj. SC 36 cm Adj. REA/CWT 1.31"



LOT 81



SR SENDERO 125/19



20195965 • 125/19 • 11/10/2019 • Bull

RED DOC YOSEMITE 5002	RED DOC 3162	Bal Idx 5%
	RED DOC VISION 3044	
RED DOC CHECKMATE 7069	SR 58/0	C/C Idx 7%
20174194	RDF 7-99	
RED DOC 5072	SR 710	Term Idx 5%
LJV MASON 072	LJV DOLLY 8/48	
3S2E MARLA 368D2 (ET)	NG LEGEND 100	
20164630	ROLLING OAKS DAISY 368	
MC DARLA 368/1		

	BW	WW	YW	MILK	TM	SC	HCW	REA	MARB	TEND
EPDs	1.06	11.08	27.96	2.31	7.85	1.03	15.38	0.18	0.00	-0.01
Acc	.33	.45	.31	.23	--	.27	.26	.26	.44	.21
%Rank	90%	10%	2%	25%	--	1%	1%	1%	65%	20%

Writes EPD traits in the top 20%. An own son of Red Doc's Check Mate 7069 owned by Wiley Ranch and maternal sib to the 368/G3 bull who is also selling.

Adj. %IMF 4.4, Adj. REA/CWT 1.23"



LOT 82



SR 117/19



20195957 • 117/19 • 11/6/2019 • Bull

KR 225/10	KR 230/08	Bal Idx 19%
	KR 328/5 (ET) 328/5 F2	
KR CATALYST 531/15	KR 56/10	C/C Idx 12%
20153484	KR 15/09 F1	
KR 310/12 2Y0	SF PLAYER 33/0	Term Idx 28%
PS CADD0 201-7	WENDT 7706	
SR 63/1	KR RICARDO 182/02	
201101005622	LAZY LINE 4/4	
SR 447 (ET) 447		

	BW	WW	YW	MILK	TM	SC	HCW	REA	MARB	TEND
EPDs	0.50	0.84	-2.54	-3.95	-3.53	0.08	-3.51	-0.04	0.23	-0.02
Acc	.32	.47	.33	.29	--	.37	.29	.29	.44	.21
%Rank	80%	40%	55%	95%	--	95%	90%	85%	1%	15%

A KR Catalyst 531/15 son that goes back to KR Ricardo 182/0 on his dam's side. His dam, SR 63/1, has a 349 day average calving interval after 8 calves. Top 1% Marbling genetics. He carries a .23 EPD with 44% accuracy.

Adj. WW 610 lbs. Adj. REA/CWT 1.25" Adj. %IMF 4.1 Adj. SC 32 cm



LOT 83





SR BOHANNON 132/19



20195972 • 132/19 • 11/21/2019 • • Bull

KR 482/15	KR 781/13	Bal Idx 6%
	KR 34/08 1A	
KR1582/17	TOP GUN 244	C/C Idx 8%
20175788	KR 15R/07 F1	
KR 574/09 KR574/09 F2	RDF SANCHO 7-216	Term Idx 5%
RED DOC SANCHO ET 3307	OLIVAREZ RANCHES 1/921	
OLIVAREZ 7/667	OLIVAREZ RANCH 7/281	
20171681	OLIVAREZ RANCH 5/164	
OLIVAREZ 418		

	BW	WW	YW	MILK	TM	SC	HCW	REA	MARB	TEND
EPDs	-0.14	6.98	13.02	0.58	4.06	0.60	9.14	0.09	0.06	-0.02
Acc	.27	.43	.24	.22	--	.35	.25	.25	.35	.21
%Rank	60%	20%	15%	55%	--	4%	4%	10%	10%	10%

Study this young bull's numbers well. SR Bohannon 132/19 is as balanced across the board as any bull in the entire offering. He misses being breed average for all 12 EPD traits by a very slim margin and records top 20% for 10. His dam, Olivarez 7/667, has a 349 day average calving interval after two calves.

Adj. WW 662 lbs. Adj. REA/CWT 1.15" Adj. SC 34 cm



LOT 84



SR 65/20



20200274 • 65/20 • 3/17/2020 • • Bull

SR 710	WR CHALLENGER L230	Bal Idx 4%
	RBC MISS PARTNER 390	
LJV MASON 0/72	LJV VAQUERO 4/22	C/C Idx 3%
1290709	SR 549	
LJV DOLLY 8/48	KR 225/10	Term Idx 6%
KR CATALYST 531/15	KR 310/12 2YO	
SR 88/7	SJ HIGH ROLLER 005	
20171843	ABRASION 235	
WOMAN HOLLERIN 5235		

	BW	WW	YW	MILK	TM	SC	HCW	REA	MARB	TEND
EPDs	0.78	12.31	18.82	-4.91	1.25	0.13	8.92	0.14	0.12	-0.01
Acc	.33	.44	.32	.28	--	.38	.29	.29	.43	.21
%Rank	85%	10%	5%	95%	--	95%	4%	2%	3%	20%

Stay in the main line of Strait Ranches. Mason x Catalyst. This bull's dam, SR 88/7, has a 354 day average calving interval after 3 calves.

Adj. WW 616 lbs. REA/CWT 1.2" SC 34 cm



LOT 85



SR GENESIS 6/H3



20200727 • 6/H3 • 1/22/2020 • • Bull

LJV MASON 0/72	SR 710	Bal Idx 1%
	LJV DOLLY 8/48	
SR GENESIS 75/3	MR WINROCK N127	C/C Idx 1%
20132516	PERNER D 931	
SR ARKOMA 30/0	KR 225/10	Term Idx 1%
KR CATALYST 531/15	KR 310/12 2YO	
SR 10/18	LR CODE RED 45/353	
20180839	SR 613	
SR 6/0		

	BW	WW	YW	MILK	TM	SC	HCW	REA	MARB	TEND
EPDs	0.35	19.83	24.19	-7.00	2.92	0.46	11.57	0.16	0.26	0.00
Acc	.33	.40	.34	.26	--	.37	.27	.27	.45	.21
%Rank	75%	2%	3%	99%	--	15%	2%	2%	1%	25%

Genesis x Catalyst. Balanced EPDs writing 9 in the top 50% or better. This bull's young donor dam, SR 10/18, has a 361 day calving interval after two calves.

Adj. WW 607 lbs. Adj. REA/CWT 1.3" Adj. %IMF 5.5 Adj. SC 36 cm



LOT 86



SR 54/20



20200264 • 54/20 • 3/14/2020 • • Bull

KR 225/10	KR 230/08	Bal Idx 1%
KR CATALYST 531/15	KR 328/5 (ET) 328/5 F2	
20153484	KR 56/10	C/C Idx 1%
KR 310/12 2Y0	KR 15/09 F1	
LJV MASON 0/72	SR 710	Term Idx 1%
SR 25/4	LJV DOLLY 8/48	
20141931	FS MOSES JR 2/5 P 5	
SR 516	BRIGGS 529/00	

	BW	WW	YW	MILK	TM	SC	HCW	REA	MARB	TEND
EPDs	0.84	22.36	31.95	-7.03	4.15	0.68	14.70	0.24	0.41	-0.01
Acc	.32	.46	.33	.29	--	.39	.30	.30	.44	.21
%Rank	85%	2%	1%	99%	--	2%	1%	1%	1%	20%

Catalyst x Mason. Posts 9 EPD traits in the top 20%. Dam has a 364 day average calving interval after 6 calves.

Adj. WW 657 lbs. Adj. REA/CWT 1.27" Adk %IMF 5.5, Adj. SC 38 cm.



LOT 87



SR 368/G3



20195995 • 368/G3 • 9/12/2019 • • Bull

KR 225/10	KR 230/08	Bal Idx 1%
KR CATALYST 531/15	KR 328/5 (ET) 328/5 F2	
20153484	KR 56/10	C/C Idx 1%
KR 310/12 2Y0	KR 15/09 F1	
LJV MASON 0/72	SR 710	Term Idx 1%
3S2E MARLA 368D2 (ET)	LJV DOLLY 8/48	
20164630	NG LEGEND 100	
MC DARLA 368/1	ROLLING OAKS DAISY 368	

	BW	WW	YW	MILK	TM	SC	HCW	REA	MARB	TEND
EPDs	1.11	17.38	22.09	-6.02	2.67	0.76	8.60	0.15	0.31	-0.01
Acc	.32	.44	.33	.27	--	.38	.30	.30	.44	.21
%Rank	90%	3%	4%	99%	--	2%	5%	2%	1%	20%

KR Catalyst 531/15 son out of one our best Mason daughters. This is the base of our program.

Adj. WW 571 lbs. Adj. REA/CWT 1.31" Adj. %IMF 4.8 Adj. SC 34 cm



SR MPACT 2/H4



20200725 • 2/H4 • 4/17/2020 • • Bull

HARRIS 257/4	AJH 126/0	Bal Idx 2%
SR MPACT 30/F2	HARRIS FARMS 037/2	
20180821	MR WINROCK N127	C/C Idx 4%
SR ARKOMA 30/0	PERNER D 931	
LJV MASON 0/72	SR 710	Term Idx 1%
SR LIV 2/6	LJV DOLLY 8/48	
20161095	SR 444	
SR 837	SR 613	

	BW	WW	YW	MILK	TM	SC	HCW	REA	MARB	TEND
EPDs	-1.08	8.88	15.21	0.29	4.73	0.41	10.86	0.20	0.18	-0.02
Acc	.33	.36	.31	.23	--	.36	.26	.26	.44	.21
%Rank	20%	15%	10%	60%	--	35%	3%	1%	1%	10%

Selling 50% Semen Interest & Full Possession

These are our first SR MPACT 30/F2 sons to be offered for sale. They are out of SR Liv 2/6 that is currently owned by Harris Riverbend Farms as a donor. Everything is lined up for this to work. 2/6 is out of Strait Ranches donor SR 837 that was picture perfect. Stacking Arkoma 30/0 and the excitement of carcass in the HRB 257/4 sets this bull up as a AI sire prospect for the breed.

Adj. BW 52 lbs. Adj. YW 1060 lbs. Adj. REA/CWT 1.28" Adj. %IMF 4.6, Adj. SC 34 cm



LOT 89





SR 2/H1



20200231 • 2/H1 • 3/22/2020 • Bull

HARRIS 257/4	AJH 126/0	Bal Idx 2%
	HARRIS FARMS 037/2	
SR IMPACT 30/F2	MR WINROCK N127	C/C Idx 7%
20180821 SR ARKOMA 30/0	PERNER D 931	
LJV MASON 0/72	SR 710	Term Idx 1%
	LJV DOLLY 8/48	
SR LIV 2/6	SR 444	
20161095 SR 837	SR 613	

	BW	WW	YW	MILK	TM	SC	HCW	REA	MARB	TEND
EPDs	-1.32	6.41	8.34	0.84	4.04	0.34	9.89	0.18	0.28	-0.02
Acc	.33	.36	.29	.23	--	.36	.26	.26	.41	.21
%Rank	15%	20%	20%	40%	--	60%	3%	1%	1%	10%

Full brother to the SR 2/H4 bull. Posts 11 EPD traits in the top 30%.

Adj. WW 567 lbs. Adj. REA/CWT 1.37" Adj. %IMF 5.6 Adj. SC 34 cm



HEFTE TOWNSEND 1920



20207200 • 1920 • 4/18/2020 • Scur • Bull

KR 97/10	RDF 8052	Bal Idx 1%
	KR N2/5 4A	
KR 191/13	FIVE OAKS 29/0	C/C Idx 2%
20131196 KR 517/04 1A	KR 70/0	
RED DOC EL REY 3253	KR 189/11	Term Idx 1%
	RDF 1042	
RED DOC LA REINA 6281	KR 101/11	
20165210 RED DOC 3381	RED DOC MULTIPLE DAM MD	

	BW	WW	YW	MILK	TM	SC	HCW	REA	MARB	TEND
EPDs	1.49	20.76	29.38	-3.88	6.50	-0.03	12.71	0.16	0.14	0.00
Acc	.34	.40	.30	.26	--	.29	.30	.30	.38	.21
%Rank	95%	2%	1%	95%	--	99%	2%	2%	2%	25%

Sired by KR 191/13 and out of Red Doc La Reina 6281, a female that Townsend Cattle Co. purchased at the Red Doc Elite Female Sale. This bull weaned with a whopping 717 adj. WW. Take a look at this fancy bull's very impressive EPD set which includes top 2% Marb and 2% REA. Be on the lookout for his half siblings on Caleb Bram's showstring in upcoming years. Performance and a stud phenotype make this bull an appealing option for any program. Don't overlook this bull's phenomenal EPDs – he has 8 traits in the top 4%!

Adj. BW 56 lbs., Adj. WW 717 lbs., Adj. REA 15.2", Adj. %IMF 4.6, Adj. BF .20, Adj. SC 42 cm



LOT 91



HEFTE RANCH H119



20202497 • H119 • 3/10/2020 • Polled • Bull

HARCO 1323	HARCO T956 (ET) T956	Bal Idx 2%
	HARCO T720 (ET) T720	
HEFTE RANCH D25	SJ TANKER 818	C/C Idx 2%
20160227 HEFTE RANCH A88	MANITOU IV 54/07	
RED DOC JORGE 1382	OIX JORGE 690	Term Idx 2%
	RDF 8065	
RED DOC 4283	OIX 752	
20143113 RED DOC 2370	NEW CHANCE 2-133	

	BW	WW	YW	MILK	TM	SC	HCW	REA	MARB	TEND
EPDs	0.53	16.59	26.56	1.88	10.17	0.30	12.92	0.14	0.04	0.02
Acc	.32	.44	.30	.25	--	.32	.26	.26	.41	.21
%Rank	80%	4%	2%	30%	--	70%	2%	2%	10%	95%

Sired by Hefte Ranch D25 and out of Red Doc 4283, a cow we purchased at the Red Hot Sale in 2016. 4283 has a remarkable calving interval of 345 days with 5 calves on the ground. H119 weaned at 619 lb with a 108 ratio. This gentle bull has an impressive, balanced EPD set and indices all at top 2%. H119 is a bull that will get the job done in a solid and consistent manner even in harsh environments.

Adj. WW 619 lbs., Adj. YW 1144 lbs., Adj. REA 13.8", Adj. SC 34 cm



93

HEFTE RANCH H177 ET



20203262 • H177 • 2/24/2020 • Horn • Bull

KR 97/10	RDF 8052	Bal Idx 3%
	KR N2/5 4A	
KR 191/13		C/C Idx 4%
20131196	FIVE OAKS 29/0	
KR 517/04 1A	KR 70/0	Term Idx 3%
	FIVE OAKS 74	
RPV 7/0 RPV7/0	RPV 60/4	
HEFTE RANCH A51		
20130202	WENDT **ALL STAR 5876** 5876	
CA 12/8	DOUBLE E FARMS 130	

	BW	WW	YW	MILK	TM	SC	HCW	REA	MARB	TEND
EPDs	0.64	13.08	16.38	-4.23	2.31	0.07	10.24	0.06	0.17	0.01
Acc	.34	.41	.36	.30	--	.38	.31	.31	.47	.21
%Rank	80%	10%	10%	95%	--	95%	3%	10%	2%	75%

Hefte Ranch H177 (flushmate to Lot 94) is an ET calf out of KR 191/13 and Hefte Ranch A51. We are extremely picky about which cows make it to the donor pen, and A51 has more than met our requirements. She is a Never Before daughter will a perfect udder, level hip and tons of capacity. She has produced an exceptional natural calf every year with the exception of the year we flushed her. If you are looking to improve yield grades, this bull scanned a 4.65%IMF with only .16 BF. He has strong EPD set combining carcass, growth and fertility..

Adj. REA 12.9, Adj. %IMF 4.6, Adj. BF .20, Adj. SC 33 cm



LOT 93

94

HEFTE RANCH H179 ET



20203264 • H179 • 2/28/2020 • Horn • Bull

KR 97/10	RDF 8052	Bal Idx 1%
	KR N2/5 4A	
KR 191/13		C/C Idx 3%
20131196	FIVE OAKS 29/0	
KR 517/04 1A	KR 70/0	Term Idx 1%
	FIVE OAKS 74	
RPV 7/0 RPV7/0	RPV 60/4	
HEFTE RANCH A51		
20130202	WENDT **ALL STAR 5876** 5876	
CA 12/8	DOUBLE E FARMS 130	

	BW	WW	YW	MILK	TM	SC	HCW	REA	MARB	TEND
EPDs	0.76	18.39	21.51	-3.38	5.82	0.08	12.33	0.14	0.19	0.00
Acc	.34	.41	.36	.30	--	.38	.31	.31	.47	.21
%Rank	85%	3%	4%	90%	--	95%	2%	2%	1%	30%

A flushmate to Hefte Ranch H177 ET. Again, Hefte Ranch A51 is one of Kathryn's favorite cows and KR 191/13 needs no introduction. This bull scanned 4.51%IMF with only .16 BF and will improve yield grades. Like his brother, he has a strong EPD set with growth, carcass and fertility.

Adj. REA 14.0, Adj. REA/cwt 1.3, Adj. %IMF 4.5, Adj. BF .20, Adj. SC 34 cm



LOT 94

95

HEFTE RANCH H70



20197607 • H70 • 11/11/2019 • Scur • Bull

KR 97/10	RDF 8052	Bal Idx 4%
	KR N2/5 4A	
KR 191/13		C/C Idx 4%
20131196	FIVE OAKS 29/0	
KR 517/04 1A	KR 70/0	Term Idx 5%
	WENDT 6788	
LMR DANDY 024	LMR LEAH 314	
HEFTE RANCH A08		
201201004317	SJ 5/D10 (ET) 5/D10	
HEFTE W03	HEFTE RANCH 022	

	BW	WW	YW	MILK	TM	SC	HCW	REA	MARB	TEND
EPDs	0.79	9.88	13.00	-3.83	1.11	0.39	6.14	0.04	0.16	0.01
Acc	.33	.47	.34	.30	--	.38	.31	.31	.46	.21
%Rank	85%	15%	15%	95%	--	45%	10%	20%	2%	70%

This KR 191/13 son is out of Hefte Ranch A08. A08 made a name for herself by being the most efficient and highest scanning heifer on the 2014 GDC Test against all breeds. She passed her marbling on to this bull calf who scanned a 5%IMF. In addition this bull has 7 EPD traits in the top 20% including top 2% HPREG and BBK. Hefte Ranch H70 is deep sided and carries alot of muscle. We see beautiful, dark red replacement heifers on the horizon for H70.

Adj. WW 601 lbs., Adj. YW 1078 lbs., Adj. REA 12.4, Adj. %IMF 5.0, Adj. SC 35 cm



LOT 95





SR 13/H1



20200224 • 13/H1 • 1/27/2020 • • Bull

36/3
RED DOC 101 PROOF ET 6101
 20164152
 RDF 9375
 KR CATALYST 531/15
SR CATALYST GEM 13/18
 20180842
 SR ARKOMA 30/0

JHL JOSEPH 049
 HINNANT-FULBRIGHT 9/153
 RED DOC MULTIPLE SIRE MS
 RED DOC MULTIPLE DAM MD
 KR 225/10
 KR 310/12 2YO
 MR WINROCK N127
 PERNER D 931

Bal Idx
1%
 C/C Idx
1%
 Term Idx
1%

	BW	WW	YW	MILK	TM	SC	HCW	REA	MARB	TEND
EPDs	-1.17	13.21	16.91	-3.73	2.87	0.75	11.17	0.14	0.17	0.00
Acc	.32	.38	.30	.22	--	.33	.26	.26	.42	.21
%Rank	15%	10%	10%	90%	--	2%	3%	2%	2%	40%

Selling 50% Semen Interest & Full Possession

Red Doc's 101 Proof x Catalyst x Arkoma 30/0. This was bred to keep not sell! Posts 9 EPD traits in the top 20% including BW.

Adj. WW 566 lbs. Adj. REA/CWT 1.3" Adj. %IMF 4.2 Adj. SC 34 cm



LOT 96



SR 004



20200207 • 004 • 4/14/2020 • • Bull

SPUR FRANCHISE OF GARTON
 20168767
 C-BAR ABIGRACE Y11
 CIRCLE A NEW ERA
SR 80/18
 20180887
 SR 100/3

SPUR FRANCHISE 7070
 H&H IRENE LAWSS 0135
 TR COLT 45 UT806
 C-BAR&BROWN ABIGRACE T712
 QT SHERMAN TANK (ET) 03/4
 TOP GUN'S BARONESS 7T21
 LJV MASON 0/72
 SR 427

Bal Idx
11%
 C/C Idx
11%
 Term Idx
13%

	BW	WW	YW	MILK	TM	SC	HCW	REA	MARB	TEND
EPDs	-0.88	2.33	2.14	0.66	1.83	0.75	3.56	0.06	0.06	-0.01
Acc	.27	.32	.20	.19	--	.34	.23	.23	.32	.21
%Rank	35%	35%	35%	55%	--	2%	20%	10%	10%	20%

50% Santa Gertrudis x 50% Red Angus

11 EPD traits in the top 45% including BW.

Adj. WW 682 lbs. Adj. REA 15" Adj. YW 1332 lbs.



LOT 97



SR 003



20200206 • 003 • 4/2/2020 • • Bull

SPUR FRANCHISE OF GARTON
 20168767
 C-BAR ABIGRACE Y11
 LJV MASON 0/72
SR 10/F3
 20181934
 SR 10.0 10/0

SPUR FRANCHISE 7070
 H&H IRENE LAWSS 0135
 TR COLT 45 UT806
 C-BAR&BROWN ABIGRACE T712
 SR 710
 LJV DOLLY 8/48
 LR CODE RED 45/353
 BRIGGS 553

Bal Idx
4%
 C/C Idx
7%
 Term Idx
4%

	BW	WW	YW	MILK	TM	SC	HCW	REA	MARB	TEND
EPDs	-0.56	11.22	15.70	-0.35	5.26	0.75	10.14	0.14	0.05	0.01
Acc	.28	.33	.22	.20	--	.35	.24	.24	.33	.21
%Rank	45%	10%	10%	65%	--	2%	3%	2%	10%	50%

50% Santa Gertrudis x 50% Red Angus

Dam is a full sister to Ms Yancey 60/3.

Adj. WW 704 lbs. Adj. REA 15.2" Adj. REA/CWT 1.22"



LOT 98





SR 31/20

20200243 • 31/20 • 2/16/2020 • • Bull



LJV MASON 0/72	SR 710	Bal Idx 3%
	LJV DOLLY 8/48	
SR GENESIS 75/3	MR WINROCK N127	C/C Idx 5%
20132516 SR ARKOMA 30/0	PERNER D 931	
LJV MASON 0/72	SR 710	Term Idx 2%
	LJV DOLLY 8/48	
SR 17/5	LR CODE RED 45/353	
20154700 SR 10.0 10/0	BRIGGS 553	

	BW	WW	YW	MILK	TM	SC	HCW	REA	MARB	TEND
EPDs	-0.73	9.02	18.00	-3.34	1.17	0.70	10.68	0.10	0.08	0.00
Acc	.35	.46	.34	.28	--	.38	.28	.28	.45	.21
%Rank	40%	15%	10%	90%	--	2%	3%	4%	5%	25%

Line bred Mason 0/72!! By the most famous Mason son SR Genesis 75/3 and out of a full sister to the most famous Mason daughter Ms Yancey 60/3. His dam has a 354 day average calving interval after 5 calves.

Adj. WW 619 lbs. Adj. REA/CWT 1.25" Adj. %IMF 4.5 Adj. SC 39 cm



SR 23/20

20200235 • 23/20 • 2/5/2020 • • Bull



KR 97/10	RDF 8052	Bal Idx 3%
	KR N2/5 4A	
HARRIS 607E	WENDT **ALL STAR 5876** 5876	C/C Idx 5%
20173842 NAVIDAD RANCH NR607	NAVIDAD RANCH 220	
SJ HIGH ROLLER 005	HARRIS FARM 12/8(WAVE MAKER) 12/8	Term Idx 2%
	SJ LADY VEGAS 755	
PC MISS HIGH ROLLER 915F2	RDF SANCHO 7-216	
20181517 SILVA 915/3	SILVA 634/7	

	BW	WW	YW	MILK	TM	SC	HCW	REA	MARB	TEND
EPDs	1.81	23.73	28.31	-6.15	5.72	-0.12	8.39	0.07	0.11	0.00
Acc	.32	.42	.25	.24	--	.34	.26	.26	.36	.21
%Rank	95%	1%	2%	99%	--	99%	5%	10%	3%	45%

Famous Harris Riverbend and Navidad Ranch cow families along with the famous 915/3 cow.

Adj. WW 652 lbs. Adj. REA/CWT 1.27" Adj. %IMF 4.1 Adj. SC 33 cm.



SR 24/20

20200304 • 24/20 • 2/7/2020 • • Bull



KR CATALYST 531/15	KR 225/10	Bal Idx 5%
	KR 310/12 2Y0	
KR 542/17	KR 1044/05 (ET) 1044/05	C/C Idx 6%
20174418 KR 879/08 1A	KR 547/04 1A	
KR 309/14	KR 234/12	Term Idx 5%
	KR 842/12 2Y0	
KR 207/17	HARCO T966 (ET) T966	
20173036 KR 154/13 YR	KR 198 4A	

	BW	WW	YW	MILK	TM	SC	HCW	REA	MARB	TEND
EPDs	0.66	7.20	2.68	1.00	4.60	0.27	4.93	0.04	0.36	-0.01
Acc	.27	.38	.25	.22	--	.27	.28	.28	.36	.21
%Rank	80%	20%	35%	40%	--	75%	15%	15%	1%	15%

KR 542/17 son. Tremendous balance and power in his EPDs. This bull's dam, KR 207/17, has a 371 day average calving interval after two natural calves.

Adj. WW 621 lbs. Adj. REA/CWT 1.29" Adj. %IMF 4.4 Adj. SC 31 cm



SR 16/20

20200227 • 16/20 • 1/24/2020 • • Bull



LJV MASON 0/72	SR 710	Bal Idx 2%
	LJV DOLLY 8/48	
SR GENESIS 75/3	MR WINROCK N127	C/C Idx 2%
20132516 SR ARKOMA 30/0	PERNER D 931	
AL ZEUS 213	STETSON 5714	Term Idx 2%
	HEFTE RANCH 157	
SR 8/4	P H WELDER 9/413	
20141977 P H WELDER 7/342	MISS GRANDVIEW 545	

	BW	WW	YW	MILK	TM	SC	HCW	REA	MARB	TEND
EPDs	0.52	18.50	23.00	-4.59	4.65	0.67	8.42	0.13	0.06	-0.01
Acc	.34	.44	.32	.28	--	.34	.27	.27	.42	.21
%Rank	80%	3%	3%	95%	--	3%	5%	3%	10%	15%

Genesis 75/3 x maternal sister to Paradigm 75/3. Dam, SR 8/4, has a 355 day average calving interval after 6 calves and also sells today.

Adj. WW 705 lbs. Adj. REA/CWT 1.27" Adj. %IMF 4.8 Adj. SC 41 cm.



SR 130/19

20195970 • 130/19 • 11/14/2019 • • Bull



KR CATALYST 531/15	KR 230/08	Bal Idx 9%
20153484 KR 310/12 2Y0	KR 328/5 (ET) 328/5 F2	
AL ZEUS 213	KR 56/10	C/C Idx 12%
	KR 15/09 F1	
SR 105/3	STETSON 5714	Term Idx 8%
20134772 SR 80/0	HEFTE RANCH 157	
	GUNSLINGER 13/5	
	PH WELDER 3/228	

	BW	WW	YW	MILK	TM	SC	HCW	REA	MARB	TEND
EPDs	0.34	2.74	-0.34	-8.13	-6.76	0.00	-3.90	0.05	0.36	0.00
Acc	.33	.46	.33	.28	--	.37	.30	.30	.44	.21
%Rank	75%	35%	45%	99%	--	99%	90%	15%	1%	25%

Catalyst son. .36 Marbling EPD. Top 1% of Top 1%. Dam has a 354 day average calving interval after six calves.

Adj. WW 576 lbs. Adj. REA/CWT 1.29" Adj. %IMF 5.6 Adj. SC 30 cm



SR 123/19

20195963 • 123/19 • 11/9/2019 • • Bull



KR CATALYST 531/15	KR 230/08	Bal Idx 3%
20153484 KR 310/12 2Y0	KR 328/5 (ET) 328/5 F2	
AJH 12/0	KR 56/10	C/C Idx 3%
	KR 15/09 F1	
SR 95/3	QT SHERMAN TANK (ET) 03/4	Term Idx 5%
20134765 SR T1 (ET)	T.G. TOPANGA 450	
	HELLACIOUS 750	
	SR 654	

	BW	WW	YW	MILK	TM	SC	HCW	REA	MARB	TEND
EPDs	0.44	10.06	6.71	-6.32	-1.28	0.43	1.78	0.06	0.31	0.00
Acc	.32	.46	.33	.29	--	.37	.30	.30	.44	.21
%Rank	75%	15%	25%	99%	--	30%	30%	15%	1%	30%

Tremendous phenotype bull. Really balanced EPDs. Dam has a 347 day average calving interval after six calves.

Adj. WW 604 lbs. Adj. REA/CWT 1.33" Adj. %IMF 5.60 Adj. SC 35 cm





SR 107/20

20201537 • 107/20 • 5/1/2020 • • Bull



SR 27/6
20164694

LJV MASON 0/72
SR ARKOMA 30/0
RDF HEAD'S UP 1038

509/14
20143402

BRIGGS 791/1

SR 710
LJV DOLLY 8/48
MR WINROCK N127
PERNER D 931
RDF 8279
RDF 9038
BRIGGS 035/6
BRIGGS 612/5

Bal Idx
2%
C/C Idx
4%
Term Idx
1%

	BW	WW	YW	MILK	TM	SC	HCW	REA	MARB	TEND
EPDs	-0.72	13.01	21.99	-5.08	1.42	1.09	13.80	0.19	0.03	0.01
Acc	.30	.44	.31	.26	--	.37	.26	.26	.43	.21
%Rank	40%	10%	4%	95%	--	1%	2%	1%	40%	85%

Sired by SR 27/6, who is our full brother to SR Genesis 75/3. Curve bending genetics. Low BW to High YW. Dam has a 341 day average calving interval after four calves.

Adj. WW 545 lbs. Adj. REA/CWT 1.3" Adj. %IMF 3.90, Adj. SC 39 cm



SR 7/20

20200218 • 7/20 • 1/6/2020 • • Bull



KR1582/17
20175788

KR 482/15
KR 574/09 KR574/09 F2
SR GENESIS 75/3

SR BELLA 91/5
20157872

SR T15 (ET)

KR 781/13
KR 34/08 1A
TOP GUN 244
KR 15R/07 F1
LJV MASON 0/72
SR ARKOMA 30/0

RDF SANCHE'S NEVER BEFORE 1136
P H WELDER 7/342

Bal Idx
5%
C/C Idx
8%
Term Idx
4%

	BW	WW	YW	MILK	TM	SC	HCW	REA	MARB	TEND
EPDs	1.31	11.45	27.08	-2.23	3.49	1.11	11.19	0.12	0.02	-0.01
Acc	.29	.42	.30	.24	--	.33	.27	.27	.41	.21
%Rank	95%	10%	2%	85%	--	1%	3%	3%	45%	15%

Another KR 1582/17 son. He is out of one of our very best SR Genesis 75/3 daughters, SR 91/5, who sells today. Same cow family as SR Paradigm 135/7.

Adj. WW 639 lbs. Adj. REA/CWT 1.18" Adj. %IMF 4.1 Adj. SC 43 cm



SR AY ATLAS 2002

20201549 • 2002 • 4/19/2020 • • Bull



SR GENUINE 69/6
20164735

SR GENESIS 75/3
SR HOLLY T19 (ET)
KR 301/15

SJ LADY ZARA816
20182117

SJ LADY DAVINA 409

LJV MASON 0/72
SR ARKOMA 30/0
RDF SANCHE'S NEVER BEFORE 1136
SR HOLLY 033
KR 545/12
KR 316/08 3A
HARRIS FARM 12/8(WAVE MAKER) 12/8
HARCO T884 (ET) T884

Bal Idx
3%
C/C Idx
2%
Term Idx
7%

	BW	WW	YW	MILK	TM	SC	HCW	REA	MARB	TEND
EPDs	0.32	14.26	20.11	-1.66	5.47	0.83	9.26	0.12	-0.02	0.00
Acc	.30	.36	.24	.21	--	.36	.25	.25	.35	.21
%Rank	75%	10%	5%	80%	--	1%	4%	3%	80%	30%

SR Genuine 69/6 son and out of Avery Strait's San Jose Ranch-KR Churchill 301/15 daughter SJ Lady Zara 826 who has a 367 day calving interval after two calves.

Adj. WW 720 lbs. Adj. REA/CWT 1.16" Adj. %IMF 3.90 Adj. SC 40 cm



SR 87/20

20200294 • 87/20 • 4/8/2020 • • Bull



KR CATALYST 531/15
20153484

KR 225/10
KR 310/12 2Y0
SR GENESIS 75/3

SR 15/6
20161104

SR T13 (ET)

KR 230/08
KR 328/5 (ET) 328/5 F2
KR 56/10
KR 15/09 F1
LJV MASON 0/72
SR ARKOMA 30/0
AL ZEUS 213
SR ISABELLA 557

Bal Idx
7%
C/C Idx
9%
Term Idx
6%

	BW	WW	YW	MILK	TM	SC	HCW	REA	MARB	TEND
EPDs	1.28	9.30	7.88	-9.65	-5.00	0.47	-1.02	0.04	0.32	0.00
Acc	.33	.45	.34	.27	--	.38	.29	.29	.45	.21
%Rank	95%	15%	20%	99%	--	10%	60%	20%	1%	30%

Catalyst 531/15 x Genesis 75/3. Top 1% Marbling reporting a .32 EPD. Full sibling to Nitro 46/18 and out of SR 15/6, who sells today and has a 364 day average calving interval after four calves.

Adj. WW 526 lbs. Adj. REA/CWT 1.27" Adj. %IMF 4 Adj. SC 35 cm



SR CATALYST 634/G11

20196488 • 634/G11 • 11/22/2019 • • Bull



KR CATALYST 531/15
20153484

KR 225/10
KR 310/12 2Y0
LR CODE RED 45/353

SILVA 634/7
1278955

SILVA 2X257/1

KR 230/08
KR 328/5 (ET) 328/5 F2
KR 56/10
KR 15/09 F1
YOGI 1562
CB 2353
OLIVAREZ RANCHES 9/836
SILVA 1X257/9

Bal Idx
3%
C/C Idx
9%
Term Idx
2%

	BW	WW	YW	MILK	TM	SC	HCW	REA	MARB	TEND
EPDs	2.24	18.68	25.36	-3.78	5.55	-0.35	11.46	0.08	0.35	-0.01
Acc	.39	.46	.35	.29	--	.39	.30	.30	.45	.21
%Rank	99%	3%	2%	95%	--	99%	2%	10%	1%	20%

KR Catalyst 531/15 x Silva 634/7

Adj. %IMF 5.6, Adj. REA/CWT 1.2"



SR 19/20

20200230 • 19/20 • 1/29/2020 • • Bull



SR GENESIS 75/3
20132516

LJV MASON 0/72
SR ARKOMA 30/0
RDF MACHO MAN 0088

SR 77/2
20120297

SR 66/0

SR 710
LJV DOLLY 8/48
MR WINROCK N127
PERNER D 931
RDF MACHO MAN 886/08
RDF LINDA 8127
MR WINROCK N127
SR 532

Bal Idx
2%
C/C Idx
3%
Term Idx
2%

	BW	WW	YW	MILK	TM	SC	HCW	REA	MARB	TEND
EPDs	-0.96	9.57	14.85	-2.30	2.48	0.60	10.05	0.10	0.12	0.02
Acc	.33	.45	.29	.28	--	.29	.26	.26	.38	.21
%Rank	25%	15%	10%	85%	--	4%	3%	4%	2%	90%

SR Genesis 75/3 son out of one of our Red Doc Macho Man daughters who has a 365 day average calving interval after seven calves. Top 25% BW carrying to top 10% YW along with top 4% REA and top 2% marbling.

Adj. WW 607 lbs. Adj. REA/CWT 1.2" Adj. %IMF 4.9 Adj. SC 37 cm





SR 76/20

20200283 • 76/20 • 3/28/2020 • • Bull



KR 482/15	KR 781/13	Bal Idx 22%
	KR 34/08 1A	
KR1582/17	TOP GUN 244	C/C Idx 26%
20175788	KR 15R/07 F1	
	LJV MASON 0/72	Term Idx 20%
SR GENESIS 75/3	SR ARKOMA 30/0	
SR 127/7		
20175650	AJH 12/0	
SR 95/3	SR T1 (ET)	

	BW	WW	YW	MILK	TM	SC	HCW	REA	MARB	TEND
EPDs	0.07	6.79	3.30	-4.45	-1.05	0.55	0.79	0.03	0.07	-0.01
Acc	.29	.43	.30	.23	--	.37	.27	.42	.42	.21
%Rank	65%	20%	35%	95%	--	5%	40%	20%	10%	15%

KR 1582/17 son. Paternal brother to many bulls in this sale. Really balanced EPDs.

Adj. WW 603 lbs. Adj. REA/CWT 1.25" Adj. %IMF 4.2 Adj. SC 38 cm



SR IMPACT 2/H3

20200724 • 2/H3 • 4/17/2020 • • Bull



HARRIS 257/4	AJH 126/0	Bal Idx 2%
	HARRIS FARMS 037/2	
SR IMPACT 30/F2	MR WINROCK N127	C/C Idx 5%
20180821	PERNER D 931	
SR ARKOMA 30/0	SR 710	Term Idx 1%
	LJV MASON 0/72	
LJV MASON 0/72	LJV DOLLY 8/48	
SR LIV 2/6		
20161095	SR 444	
SR 837	SR 613	

	BW	WW	YW	MILK	TM	SC	HCW	REA	MARB	TEND
EPDs	-1.72	10.09	8.93	0.52	5.56	0.25	10.06	0.18	0.24	-0.01
Acc	.33	.36	.31	.23	--	.36	.26	.26	.44	.21
%Rank	10%	15%	20%	55%	--	80%	3%	1%	1%	15%

SR MPact 30/F2 son of Harris Riverbend donor SR Liv 2/6

Adj. WW 458 lbs. Adj. REA/CWT 1.36" Adj. %IMF 4.5 Adj. SC 32 cm



SR 68/20

20200276 • 68/20 • 3/19/2020 • • Bull



KR 97/10	RDF 8052	Bal Idx 1%
	KR N2/5 4A	
SR T41	SR 444	C/C Idx 1%
20171844	SR 613	
SR 837	LJV MASON 0/72	Term Idx 1%
	SR 866	
SR 7/5		
SR 63/7	RDF MACHO MAN 0088	
20171820	SR 94/0	
SR 34/3		

	BW	WW	YW	MILK	TM	SC	HCW	REA	MARB	TEND
EPDs	-0.79	28.86	30.77	2.49	16.92	-0.21	18.99	0.30	0.17	-0.02
Acc	.31	.43	.30	.23	--	.36	.27	.27	.43	.21
%Rank	40%	1%	1%	25%	--	99%	1%	1%	2%	10%

His sire SR T41 is an own son of KR 97/10 who is known for his moderate, efficient daughters. T41's dam was our matriarch SR 837 donor cow. If you want cattle that grow and get there quick then consider this young bull.

Adj. WW 745 lbs. Adj. REA/CWT 1.13" Adj. %IMF 4.2 Adj. SC 35 cm



SR 41/20

20200253 • 41/20 • 3/1/2020 • • Bull



LJV MASON 0/72	SR 710	Bal Idx 5%
	LJV DOLLY 8/48	
SR GENESIS 75/3	MR WINROCK N127	C/C Idx 9%
20132516	PERNER D 931	
SR ARKOMA 30/0	OLIVAREZ RANCH 5/203	Term Idx 4%
	OLIVAREZ RANCHES 9/784	
OLIVAREZ 1/443		
OLIVAREZ 6/614	OLIVAREZ RANCHE 3/91	
20165047	OLIVAREZ RANCH 4/115	
OLIVAREZ 2/461		

	BW	WW	YW	MILK	TM	SC	HCW	REA	MARB	TEND
EPDs	-1.23	3.53	2.08	-3.45	-1.68	0.36	3.97	0.07	0.13	0.00
Acc	.32	.44	.31	.26	--	.27	.26	.26	.43	.21
%Rank	15%	30%	40%	90%	--	55%	15%	10%	2%	30%

If you are looking for an outcross with generations of predictability then look at this young herd sire prospect. He is balanced across the board in EPDs recording 11 above average.

Adj. WW 636 lbs. Adj. REA/CWT 1.3" Adj. %IMF 5.1 Adj. SC 36 cm



SR SANCHO 634/G7

20196489 • 634/G7 • 11/12/2019 • • Bull



RDF LAURELES149/03	MULTIPLE SIRE	Bal Idx 2%
	KR 5/812	
RDF SANCHO 7-216	MOUNTAIN GRIZZLY 7316	C/C Idx 17%
1269953	CB 7347	
CB 1509	YOGI 1562	Term Idx 1%
	CB 2353	
LR CODE RED 45/353		
SILVA 634/7	OLIVAREZ RANCHES 9/836	
1278955	SILVA 1X257/9	
SILVA 2X257/1		

	BW	WW	YW	MILK	TM	SC	HCW	REA	MARB	TEND
EPDs	-0.63	10.62	28.66	0.21	5.52	-0.37	20.17	0.13	0.17	-0.01
Acc	.41	.46	.34	.30	--	.37	.28	.28	.45	.21
%Rank	45%	15%	2%	60%	--	99%	1%	3%	2%	20%

Full sibling mating to the famous "six sisters" made in one flush, or sometimes better known as the "9 hundred series sibs". With that said, one of those sibs, 915/3 who is currently owned by Corparron Acres went on to become a trait leader in REA. She has impressively generated over \$350,000 in revenue and has produced a National Champion Bull.

Adj. %IMF 5.9, Adj. REA/CWT 1.17"



SR 88/20

20200295 • 88/20 • 4/9/2020 • • Bull



KR 482/15	KR 781/13	Bal Idx 7%
	KR 34/08 1A	
KR1582/17	TOP GUN 244	C/C Idx 9%
20175788	KR 15R/07 F1	
KR 574/09 KR574/09 F2	AJH 126/0	Term Idx 6%
	CA 12/8	
HEFTE RANCH D59		
SIMONA	SJ GLADIATOR 128	
20181536	SCHUSTER 910-0	
SCHUSTER 600/1		

	BW	WW	YW	MILK	TM	SC	HCW	REA	MARB	TEND
EPDs	-0.47	5.65	10.84	0.90	3.72	0.34	5.84	0.04	0.07	-0.01
Acc	.28	.43	.30	.23	--	.37	.27	.27	.42	.21
%Rank	50%	25%	15%	40%	--	60%	10%	15%	10%	15%

KR 1582/17 son. Tremendous phenotype in this young bull along with balanced EPD traits writing 10 above average. Dam has a 338 day calving interval after two calves.

Adj. WW 573 lbs. Adj. REA/CWT 1.1" Adj. %IMF 3.9 Adj. SC 35 cm





SR GENESIS 6/H4

20200728 • 6/H4 • 1/26/2020 • • Bull



LJV MASON 0/72	SR 710	Bal Idx 2%
	LJV DOLLY 8/48	
SR GENESIS 75/3		C/C Idx 2%
20132516 SR ARKOMA 30/0	MR WINROCK N127	
	PERNER D 931	Term Idx 2%
KR CATALYST 531/15	KR 225/10	
	KR 310/12 2YO	
SR 10/18		
20180839 SR 6/0	LR CODE RED 45/353	
	SR 613	

	BW	WW	YW	MILK	TM	SC	HCW	REA	MARB	TEND
EPDs	-0.05	13.60	20.50	-5.89	0.91	0.66	10.33	0.15	0.16	-0.01
Acc	.33	.40	.34	.26	--	.37	.27	.27	.45	.21
%Rank	65%	10%	4%	99%	--	3%	3%	2%	2%	15%

SR 6/H4 puts together the Strait Ranches breeding plan as well as any in the sale. SR Genesis 75/3, KR Catalyst 531/15. He posts 9 EPD traits in the top 15%. This bull's young donor dam, SR 10/18, has a 361 day calving interval after two calves.

Adj. WW 636 lbs. Adj. REA/CWT 1..26" Adj. %IMF 4.8 Adj. SC 37 cm



SR 25/20

20200236 • 25/20 • 2/8/2020 • • Bull



KR 225/10	KR 230/08	Bal Idx 1%
	KR 328/5 (ET) 328/5 F2	
KR CATALYST 531/15		C/C Idx 1%
20153484 KR 310/12 2YO	KR 56/10	
	KR 15/09 F1	Term Idx 1%
MR WINROCK N127	WR NEW MILLENNIUM H233	
	MASDEN & SON 225/9	
SR ARKOMA 30/0		
1289177 PERNER D 931	CHF SAMBO 514	
	DOUBLE P RANCH 345	

	BW	WW	YW	MILK	TM	SC	HCW	REA	MARB	TEND
EPDs	-0.83	10.10	20.02	-6.51	-1.46	1.03	15.76	0.21	0.31	0.01
Acc	.34	.46	.35	.30	--	.38	.30	.30	.45	.21
%Rank	35%	15%	5%	99%	--	1%	1%	1%	1%	85%

SR 25/20 is a full brother to last year's high selling bull SR Surge 4/19 currently owned by Wiley Ranch. He posts the same kind of powerful numbers ranking in the top 1% for 6 EPD traits including Marbling, REA, HPREG, BBK, and SC. His dam SR Arkoma 30/0 has a 359 day average calving interval after 10 calves.

Adj. WW 635 lbs. Adj. REA/CWT 1.23" Adj. %IMF 4.4 Adj. SC 34 cm



SR 42/20

20200255 • 42/20 • 3/3/2020 • • Bull



KR 97/10	RDF 8052	Bal Idx 4%
	KR N2/5 4A	
SR T41		C/C Idx 10%
20171844 SR 837	SR 444	
	SR 613	Term Idx 2%
HARRIS 17/4	FC PISTOL 28/0	
	NAVIDAD RANCH NR607	
HARRIS FARMS 107D		
20167566 SJ LADY CLARITA	HARRIS FARM 12/8(WAVE MAKER) 12/8	
	SR 638	

	BW	WW	YW	MILK	TM	SC	HCW	REA	MARB	TEND
EPDs	-1.07	20.38	7.39	-6.49	3.70	-0.36	2.06	-0.01	0.10	-0.01
Acc	.33	.44	.30	.24	--	.36	.27	.27	.43	.21
%Rank	20%	2%	25%	99%	--	99%	25%	70%	3%	15%

Another SR T41 son. He is stout in his phenotype and skeleton and ranks in the top 20% BW. Breed to heifers.

Adj. WW 691 lbs. Adj. REA/CWT 1.2" Adj. %IMF 4.7 Adj. SC 33 cm



SR 116/20

20201545 • 116/20 • 5/11/20 • • Bull

SR GENESIS 75/3	LJV MASON 0/72	Bal Idx 6%
	SR ARKOMA 30/0	
SR GENUINE 69/6		C/C Idx 14%
20164735 SR HOLLY T19 (ET)	RDF SANCHO'S NEVER BEFORE 1136	
	SR HOLLY 033	Term Idx 3%
SR T20	GREY ROCKS RANCH 039 93/039	
	SR 654	
SR 26/7		
20171004 SR 613	WR CHALLENGER L230	
	SR 231	

	BW	WW	YW	MILK	TM	SC	HCW	REA	MARB	TEND
EPDs	-0.63	7.93	14.86	0.88	4.84	0.18	10.60	0.13	0.08	-0.05
Acc	.31	.42	.29	.23	--	.36	.26	.26	.40	.21
%Rank	45%	20%	10%	40%	--	90%	3%	3%	5%	3%

Another SR Genuine 69/6 son. He posts 7 traits in the top 20%.

Adj. WW 588 lbs. Adj. REA/CWT 1.28" Adj. %IMF 4.8 Adj. SC 35 cm



SR 312/20

20201526 • 312/20 • 3/16/2020 • • Bull

LJV MASON 0/72	SR 710	Bal Idx 12%
	LJV DOLLY 8/48	
SR GENESIS 75/3		C/C Idx 17%
20132516 SR ARKOMA 30/0	MR WINROCK N127	
	PERNER D 931	Term Idx 9%
OLIVAREZ RANCH 7/281	OLIVAREZ RANCH 4/142	
	OLIVAREZ RANCHES 9/782	
20155185 OLIVAREZ 0/396	OLIVAREZ RANCH 4/142	
	OLIVAREZ RANCH 5/173	

	BW	WW	YW	MILK	TM	SC	HCW	REA	MARB	TEND
EPDs	-1.07	1.23	-0.72	-0.64	-0.02	0.23	0.94	-0.01	0.11	0.00
Acc	.32	.45	.31	.26	--	.37	.26	.26	.43	.21
%Rank	20%	40%	45%	70%	--	85%	35%	75%	3%	35%

An outcross young herd sire. SR Genesis 75/3 x Olivarez. Balanced EPDs including top 20% BW. Breed to heifers and sleep well at night.

Adj. WW 540 lbs. Adj. REA/CWT 1.15" Adj. %IMF 4.0 Adj. SC 34 cm



SR 47/20

20200259 • 47/20 • 3/7/2020 • • Bull

KR 225/10	KR 230/08	Bal Idx 2%
	KR 328/5 (ET) 328/5 F2	
KR CATALYST 531/15		C/C Idx 3%
20153484 KR 310/12 2YO	KR 56/10	
	KR 15/09 F1	Term Idx 2%
LJV MASON 0/72	SR 710	
	LJV DOLLY 8/48	
SR 76/6		
20164739 BRIGGS 032/12	BRIGGS 516/5	
	BRIGGS 062/5	

	BW	WW	YW	MILK	TM	SC	HCW	REA	MARB	TEND
EPDs	1.99	14.19	20.66	-5.15	1.95	0.52	6.11	0.12	0.37	-0.01
Acc	.32	.46	.34	.28	--	.39	.30	.30	.44	.21
%Rank	99%	10%	4%	95%	--	10%	10%	3%	1%	15%

Line bred LJV Mason 0/72. High performing young bull. Reports 9 EPD traits in the top 15%. Dam has a 354 day average calving interval after four calves.

Adj. WW 645 lbs. Adj. REA/CWT 1.15" Adj. %IMF 5 Adj. SC 38 cm





SR 49/20

20200261 • 49/20 • 3/12/2020 • • Bull



36/3
RED DOC 101 PROOF ET 6101
 20164152
 RDF 9375
 KR CATALYST 531/15

JHL JOSEPH 049
 HINNANT-FULBRIGHT 9/153
 RED DOC MULTIPLE SIRE MS
 RED DOC MULTIPLE DAM MD
 KR 225/10
 KR 310/12 2YO

SR 10/18

20180839
 SR 6/0

LR CODE RED 45/353
 SR 613

Bal Idx
1%

C/C Idx
3%

Term Idx
1%

	BW	WW	YW	MILK	TM	SC	HCW	REA	MARB	TEND
EPDs	-0.13	18.85	21.57	-5.67	3.76	0.00	10.43	0.13	0.17	0.00
Acc	.31	.44	.30	.23	--	.36	.26	.26	.42	.21
%Rank	60%	3%	4%	99%	--	99%	3%	3%	2%	25%

Red Doc's 101 Proof x Catalyst. Dam, SR 10/18, has a 361 day calving interval after two calves.

Adj. WW 623 lbs. Adj. REA/CWT 1.24" Adj. %IMF 4.3 Adj. SC 34 cm



Terms & Conditions

BIDDING

Each animal will be sold to the highest bidder without reserve. The auctioneer will settle any disputes as to bids and his decision on such matters shall be final.

TERMS

Each animal becomes the risk of the purchaser as soon as sold, but it shall be the obligation of the seller to see that animals are fed and cared for until loaded for shipment or until Monday, October 28, 2019, whichever occurs sooner.

CERTIFICATE OF REGISTRY

A transferred certificate of registry will be furnished to the purchaser for each registered bull or registered female once proper settlement has been made.

HEALTH

Health papers for interstate shipment within United States will be provided for all animals.

ANNOUNCEMENTS

Any changes from the information of any kind in this catalog will be provided in a sale day supplement sheet or announced from the auction block and such information shall take precedence over catalog information.

BREEDING GUARANTEE

All animals are guaranteed to be breeders with the exception of: a) calves under 12 months of age; b) animals shown by purchaser after sale in which the guarantee (if any) shall be between the seller and the buyer; c) injury or disease occurring after the sale; d) gross negligence or willful misconduct on the part of the purchaser; e) death by any reason.

Any bull which settles cows by natural service and passes a fertility test made by competent veterinarians, mutually agreed upon by the buyer and seller, during any six month period of trial (provided for in paragraph 2 of the section of these sales terms and conditions entitled "Options and Privileges of Return or Adjustment") shall be considered a breeder. All partial interest bulls are guaranteed to produce freezable quality semen.

Safe in calf females have been examined by competent personnel and are so guaranteed. Exposed females have been exposed but are not guaranteed to be safe in calf. Open females have not been served and are so guaranteed.

PREGNANCY DETERMINATION

The females in this sale noted safe in calf have been determined pregnant by physical palpation. Our best estimate of service sire will be given in the case of the females with both an A.I. sire and a natural breeding sire.

OPTIONS AND PRIVILEGES OF RETURN OR ADJUSTMENT

All claims for adjustment or refund must be made in writing within six months of the sale date.

In the event an animal is claimed to be a non-breeder, the animal may be returned to the seller if in good condition and complying with the health requirements of Texas. The seller shall be entitled to a six month trial following the return of the animal in which to prove that the animal is a breeder. If at the end of six months the seller is unable to prove the animal is a breeder, the seller shall at the option of the buyer replace the animal with another of equal value or issue a credit for the initial selling price. If the seller proves the animal to be a breeder, it shall be the obligation of the purchaser to take delivery of the animal and pay all expenses incurred for transportation.

If a bull is sold and at a later date proves not to be eligible for registration under association rules, the seller shall be obligated to make a satisfactory adjustment on the purchase price to the buyer, refund the purchase price or issue a credit for the initial selling price upon the return of the animal to the farm of the seller.

If an animal is sold and through DNA is proven to have incorrect parentage as represented by the certificate of registration, and for which the parentage can be determined, the seller shall be obligated to make a satisfactory adjustment on the purchase price to the buyer, refund the purchase price or issue a credit for the initial selling price upon the return of the animal to the farm of the seller.

RIGHTS AND OBLIGATIONS

The above terms and conditions of sale shall constitute a contract between the buyer and seller of each animal and shall be equally binding on both. Other than the guarantees and warranties stated above, no other warranties or guarantees are expressed or implied. Each sale or resale of an animal constitutes a separate transaction.

LIABILITY

All persons who attend this sale do so at their own risk. The owners, American Marketing Services or any other person connected with the sale assumes no liability, legal or otherwise.





HEFTE RANCH H04

20197596 • H04 • 10/1/2019 • Polled • Reference Sire

KR 921/15	KR 800/11	Bal Idx 1%
HEFTE RANCH F14 20175282	KR 110N/09 110/09 N6	
HEFTE RANCH D140ET	HARCO 1323	C/C Idx 1%
AJH 126/0	BRIGGS 039/5	
HEFTE RANCH F124 20175364	CHAPS 372	Term Idx 1%
HEFTE RANCH Z60	DOUBLE E 8T39	
	SJ JESTER 911	
	LIZ 07/02	

	BW	WW	YW	MILK	TM	SC	HCW	REA	MARB	TEND
EPDs	-0.72	16.21	20.26	4.11	12.21	0.00	11.77	0.15	0.27	0.02
Acc	.40	.44	.31	.23	--	.27	.27	.28	.43	.21
%Rank	40%	4%	4%	15%	--	99%	2%	2%	1%	90%



HEFTE RANCH F14

20175282 • F14 • 10/20/2017 • Polled • Reference Sire

KR 800/11	RDF 8052	Bal Idx 1%
KR 921/15 20154201	KR 307/06 4B	
KR 110N/09 110/09 N6	WAUKARAU GOLD MINE 6151	C/C Idx 1%
HARCO 1323	KR 23/001	
HEFTE RANCH D140ET 20157775	HARCO T956 (ET) T956	Term Idx 1%
BRIGGS 039/5	HARCO T720 (ET) T720	
	MR CVF 2022	
	BRIGGS 046/1	

	BW	WW	YW	MILK	TM	SC	HCW	REA	MARB	TEND
EPDs	-1.53	12.51	25.09	8.35	14.60	0.06	20.05	0.18	0.37	0.02
Acc	.50	.52	.38	.27	--	.41	.30	.35	.50	.23
%Rank	10%	10%	2%	2%	--	99%	1%	1%	1%	90%



HEFTE RANCH F82

20176895 • F82 • 12/24/2017 • Polled • Reference Sire

RDF QUIEN SABE 0120	OIX JORGE 690	Bal Idx 25%
RED DOC 3162 20131002	RDF 3-4	
RDF 5-27	RDF 2-134	C/C Idx 23%
AJH 126/0	OLIVAREZ RANCHES 1-916	
HEFTE RANCH B107 20140301	CHAPS 372	Term Idx 30%
BELLATRIX X19	DOUBLE E 8T39	
	PG 510-6	
	HEFTE RANCH 629	

	BW	WW	YW	MILK	TM	SC	HCW	REA	MARB	TEND
EPDs	-1.15	-4.46	-9.32	1.10	-1.13	0.12	-5.53	-0.11	0.12	0.01
Acc	.39	.54	.38	.28	--	.38	.29	.32	.46	.23
%Rank	15%	65%	90%	40%	--	95%	95%	99%	3%	85%



KR 191/13

20131196 • 191/13 • 3/22/2013 • • Reference Sire

RDF 8052	KR 659/06	Bal Idx 2%
KR 97/10 1288482	RDF 6-76	
KR N2/5 4A	SUDDEN IMPACT 3R	C/C Idx 3%
FIVE OAKS 29/0	KR 58/001	
KR 517/04 1A 1251691	KUBECKA 1064	Term Idx 3%
KR 70/0	ELBERTA 6 9070	
	MULTIPLE SIRE	
	KR 8/644	

	BW	WW	YW	MILK	TM	SC	HCW	REA	MARB	TEND
EPDs	1.44	12.94	18.42	-8.83	-2.36	-0.05	12.00	0.16	0.21	0.00
Acc	.52	.83	.69	.58	--	.67	.55	.65	.76	.23
%Rank	95%	10%	10%	99%	--	99%	2%	2%	1%	40%



CA/RDF MATEO 7238

20174206 • 7238 • 3/17/2017 • Polled • Reference Sire

KR 189/11	KR 282/08	Bal Idx 1%
RED DOC DINERO 4088 20143156	KR 363/5 5A	
RDF BONITA 8017	SCC NEW VISION 4V42	C/C Idx 1%
HF FRED 390/1	RDF 6-316	
RED DOC 4009 20143023	CSC FRED 8-5	Term Idx 1%
RDF 9177	HARDING 105/6	
	OIX JORGE 690	
	SANCHEZ 6/6	

	BW	WW	YW	MILK	TM	SC	HCW	REA	MARB	TEND
EPDs	-1.60	21.54	29.85	-0.88	9.89	0.46	16.43	0.24	0.38	0.00
Acc	.48	.52	.38	.28	--	.28	.31	.35	.50	.23
%Rank	10%	2%	1%	70%	--	10%	1%	1%	1%	40%



SR PARADIGM 135/7

20175656 • 135/7 • 12/30/2017 • Horn • Reference Sire

KR 225/10	KR 230/08	Bal Idx 1%
KR CATALYST 531/15 20153484	KR 328/5 (ET) 328/5 F2	
KR 310/12 2Y0	KR 56/10	C/C Idx 2%
P H WELDER 9/413	KR 15/09 F1	
P H WELDER 7/342 1281086	P H WELDER 4/559	Term Idx 1%
MISS GRANDVIEW 545	WELDER RANCH 531/2	
	MISS GRANDVIEW 060	
	GRANDVIEW'S LADY 051	

	BW	WW	YW	MILK	TM	SC	HCW	REA	MARB	TEND
EPDs	1.20	14.72	17.49	-6.45	0.91	0.23	6.33	0.06	0.39	-0.01
Acc	.47	.50	.39	.29	--	.40	.31	.35	.50	.23
%Rank	90%	5%	10%	99%	--	85%	10%	10%	1%	15%



KR1582/17

20175788 • 1582/17 • 9/30/2017 • • Reference Sire

KR 781/13	RDF LINDO'S AVALANCH 8108	Bal Idx 8%
KR 482/15 20153394	KR 252/03 F2	
KR 34/08 1A	KR 1044/05 (ET) 1044/05	C/C Idx 13%
TOP GUN 244	KR 9/579	
KR 574/09 KR574/09 F2 1281023	MC REBEL'S RENEGADE 121/9	Term Idx 7%
KR 15R/07 F1	WT 38	
	KR 29/001	
	KR 242/5	

	BW	WW	YW	MILK	TM	SC	HCW	REA	MARB	TEND
EPDs	-0.11	4.92	11.64	1.01	3.47	0.77	8.02	0.08	0.05	-0.03
Acc	.31	.57	.38	.29	--	.45	.32	.35	.51	.23
%Rank	60%	25%	15%	40%	--	2%	5%	10%	10%	5%



SR 68F2 265/H3

20207556 • 265/H3 • 12/27/2020 • • Reference Sire

KR CATALYST 531/15	KR 225/10	Bal Idx 1%
SR 68/F2 20186389	KR 310/12 2Y0	
SR 68/2	RDF MACHO MAN 0088	C/C Idx 3%
OLIVAREZ 4/552	BRIGGS 081/0	
OR 8/851 20188031	OLIVAREZ 1/443	Term Idx 1%
OLIVAREZ 0/387	OLIVAREZ RANCH 4/121	
	OLIVAREZ RANCH 4/142	
	OLIVAREZ RANCH 7/265	

	BW	WW	YW	MILK	TM	SC	HCW	REA	MARB	TEND
EPDs	-0.64	15.93	18.31	-2.34	5.62	0.52	10.86	0.12	0.19	0.01
Acc	.27	.36	.23	.22	--	.25	.25	.21	.34	.21
%Rank	45%	4%	10%	85%	--	10%	3%	3%	1%	70%





HARRIS FARMS 190E



20173826 • 190E • 3/30/2017 • Polled • Reference Sire

KR 800/11	RDF 8052 KR 307/06 4B	Bal Idx 1%
KR 921/15 20154201	Waukarau Gold Mine 6151 KR 23/001	C/C Idx 2%
HARCO T956 (ET) T956	PCR AVALANCHE 95/5 (ET) 95/5 MISS WINROCK M253	Term Idx 1%
HARRIS FARMS 1524 20155577	KR RICARDO 182/02 FIVE OAKS 62/0	

	BW	WW	YW	MILK	TM	SC	HCW	REA	MARB	TEND
EPDs	0.62	12.74	19.79	6.17	12.54	0.41	13.23	0.15	0.67	-0.02
Acc	.55	.54	.43	.24	--	.49	.31	.42	.58	.23
%Rank	80%	10%	5%	4%	--	35%	2%	2%	1%	10%



RED DOC 101 PROOF ET 6101



20164152 • 6101 • 3/7/2016 • Polled • Reference Sire

JHL JOSEPH 049	JHL ALEJANDRO 027 BRIGGS 085/5	Bal Idx 1%
36/3 20134389	SANTA GERTRUDIS MS RED ANGUS	C/C Idx 1%
RED DOC MULTIPLE SIRE MS	RED DOC MULTIPLE SIRE MS RED DOC MULTIPLE DAM MD	Term Idx 1%
RDF 9375 1289680	RED DOC MULTIPLE SIRE MS RED DOC MULTIPLE DAM MD	

	BW	WW	YW	MILK	TM	SC	HCW	REA	MARB	TEND
EPDs	-1.26	19.19	19.22	-0.19	9.40	0.06	10.26	0.10	0.12	0.00
Acc	.50	.52	.33	.29	--	.29	.28	.30	.44	.23
%Rank	15%	3%	5%	65%	--	99%	3%	5%	2%	40%



SR 27/6



20164694 • 27/6 • 2/17/2016 • Horn • Reference Sire

SR 710	WR CHALLENGER L230 RBC MISS PARTNER 390	Bal Idx 1%
LJV MASON 0/72 1290709	LJV VAQUERO 4/22 SR 549	C/C Idx 1%
MR WINROCK N127	WR NEW MILLENNIUM H233 MASDEN & SON 225/9	Term Idx 1%
SR ARKOMA 30/0 1289177	CHF SAMBO 514 DOUBLE P RANCH 345	

	BW	WW	YW	MILK	TM	SC	HCW	REA	MARB	TEND
EPDs	-2.34	10.73	18.52	-2.12	3.24	1.02	17.02	0.28	0.00	0.00
Acc	.44	.60	.44	.33	--	.44	.32	.38	.52	.23
%Rank	3%	15%	10%	85%	--	1%	1%	1%	65%	25%



RED DOC RAPID PROGRESS8046



20182179 • 8046 • 2/16/2018 • Polled • Reference Sire

RED DOC SI SABE 3106	RDF QUIEN SABE 0120 RDF BONITA 8017	Bal Idx 1%
RED DOC 6092 20164925	KR 189/11 MISS DOUBLE TT 52 52-8	C/C Idx 1%
KR 189/11	KR 282/08 KR 363/5 5A	Term Idx 1%
RED DOC 6171 20164113	RDF SANCHO 7-216 RDF 9155	

	BW	WW	YW	MILK	TM	SC	HCW	REA	MARB	TEND
EPDs	-1.63	19.05	26.37	3.54	13.07	0.98	18.32	0.19	0.15	0.01
Acc	.42	.45	.31	.24	--	.35	.27	.28	.43	.21
%Rank	10%	3%	2%	15%	--	1%	1%	1%	2%	70%



SR 38/19



20190191 • 38/19 • 3/5/2019 • • Reference Sire

LJV MASON 0/72	SR 710 LJV DOLLY 8/48	Bal Idx 15%
SR 27/6 20164694	MR WINROCK N127 Perner D 931	C/C Idx 15%
AL ZEUS 213	STETSON 5714 HEFTE RANCH 157	Term Idx 17%
SR 17/4 20141982	P H WELDER 4/564 WELDER RANCH 908/2	

	BW	WW	YW	MILK	TM	SC	HCW	REA	MARB	TEND
EPDs	-1.40	3.65	-0.18	-5.32	-3.49	0.77	0.39	0.09	-0.04	0.00
Acc	.31	.38	.25	.25	--	.27	.25	.23	.35	.21
%Rank	10%	30%	45%	95%	--	2%	45%	5%	90%	30%



SR SURGE 4/19



20190137 • 4/19 • 1/10/2019 • • Reference Sire

KR 225/10	KR 230/08 KR 328/5 (ET) 328/5 F2	Bal Idx 1%
KR CATALYST 531/15 20153484	KR 56/10 KR 15/09 F1	C/C Idx 1%
MR WINROCK N127	WR NEW MILLENNIUM H233 MASDEN & SON 225/9	Term Idx 1%
SR ARKOMA 30/0 1289177	CHF SAMBO 514 DOUBLE P RANCH 345	

	BW	WW	YW	MILK	TM	SC	HCW	REA	MARB	TEND
EPDs	-0.83	14.76	25.14	-7.40	-0.02	1.56	18.60	0.25	0.41	0.01
Acc	.34	.47	.36	.30	--	.40	.30	.34	.47	.21
%Rank	35%	5%	2%	99%	--	1%	1%	1%	1%	85%



WENDT 9386



20203887 • 9386 • 3/30/2020 • Polled • Reference Sire

BOND 007/RSR 007	PCR AVALANCHE 95/5 (ET) 95/5 PCR LASSIE (ET) 68/6	Bal Idx 2%
KR 1131/13 20134080	KR 68R/08 KR 406R/08	C/C Idx 3%
WENDT 7818	WENDT 7425 WENDT 8869	Term Idx 1%
WENDT 788 20141239	6T5 WENDT 8707	

	BW	WW	YW	MILK	TM	SC	HCW	REA	MARB	TEND
EPDs	0.03	5.89	31.06	2.40	5.35	0.87	18.94	0.16	0.09	-0.01
Acc	.33	.44	.29	.27	--	.32	.27	.26	.40	.21
%Rank	65%	25%	1%	25%	--	1%	1%	2%	4%	15%



SR 30/F6



20181921 • 30/F6 • 10/30/2018 • Horn • Reference Sire

AJH 126/0	CHAPS 372 DOUBLE E 8T39	Bal Idx 2%
HARRIS 257/4 20145305	QT SHERMAN TANK (ET) 03/4 HARWELL 20	C/C Idx 8%
MR WINROCK N127	WR NEW MILLENNIUM H233 MASDEN & SON 225/9	Term Idx 1%
SR ARKOMA 30/0 1289177	CHF SAMBO 514 DOUBLE P RANCH 345	

	BW	WW	YW	MILK	TM	SC	HCW	REA	MARB	TEND
EPDs	-1.90	4.04	10.18	-2.32	-0.30	1.01	12.08	0.17	0.19	0.01
Acc	.37	.42	.30	.29	--	.31	.27	.27	.40	.23
%Rank	5%	30%	20%	85%	--	1%	2%	1%	1%	85%



NUTRITION MATTERS



LYSSY & ECKEL FEEDS

Since 1945

CALL ANY OF OUR CONVENIENT LOCATIONS TO ARRANGE DELIVERY OR PLACE AN ORDER.

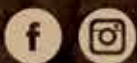
POTH
111 E WESTMEYER ST.
POTH, TX
830-484-3314

GEORGE WEST
101 LEONA ST.
GEORGE WEST, TX
361-449-2218

HONDO
2005 19TH ST.
HONDO, TX
830-426-3351

LLANO
105 E YOUNG ST.
LLANO, TX
325-247-4147

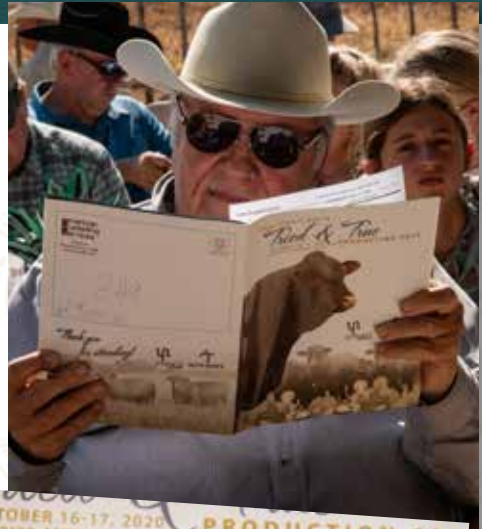
ROOSEVELT
3861 W STATE LOOP 291
ROOSEVELT, TX
325-446-2604



WWW.LEFEEDS.COM



2020 Sale Day Fun





Presorted
First Class
US Postage
PAID
SlateGroup

PO Box 10
Wheelock, Texas 77882
www.amsattle.com

*Thank you
for attending!*



STRAIT
Ranches



HEFTE RANCH

