

# ADDISON BRANGUS FARMS AND FRIENDS PERFORMANCE SALE

**Saturday, October 9, 2021 ♦ 11 am CST**  
Cullman Stockyard ♦ Cullman, Alabama



*She Sells!*



*She Sells!*

*Featuring The True Performance Cattle of the Southeast*

# Can't Make it to the Sale?

*Give us a Call about our Sight Unseen Purchase Option!*

If you are unable to attend the auction in person or watch the live broadcast, simply contact the AMS marketing team, Wayne Addison or the individual consignors.

- Describe your selection criteria and the type of female, embryo or semen lot you wish to purchase and your price range.
- You pay only the bid price, just as if you were bidding in person.
- We will call after the sale to confirm your purchase and you can confirm your payment method and arrange shipping.
- You decide if the animal meets your criteria upon delivery. If you are not happy with your purchase, you don't own it.
- It is as simple as that. 100% Satisfaction guaranteed!



Mark Cowan • (903) 495-4522, markc@amscattle.com  
Richard Hood • (979) 224-6150, richardh@amscattle.com  
Trey Kirkpatrick • (979) 324-5518, treyk@amscattle.com  
www.AMSCattle.com



**Watch & bid online for FREE at**

**DVAuction**  
Broadcasting Real-Time Auctions



**Can't make the sale? Bid from home with DV Auction's "real-time" internet bidding service!**

**Buying online is as easy as 1, 2, 3...**

1. Create an account at [www.dvauction.com](http://www.dvauction.com) under the "register" tab
2. Apply for bidding approval by clicking on the "details" tab at least 24 hours prior to the auction-a DV representative will notify you once you have been approved
3. Tune in for the sale and make your purchases!

After the sale, contact the sale manager or owner to arrange transportation and payment. **High speed internet** is required for successful bidding-be sure to check the lag-time monitor in the top left corner to ensure real-time broadcasts.

**Proxy Bidding**-if you can't make time to watch the sale, register a proxy bid and let our system represent your bid while you're away. Look for the "proxy bid" tab on the auction listing, and fill in your maximum bids. We'll handle the rest!

**Having troubles?** During the auction, you can type a message to the operator at any time for assistance. Our full-time support team can also always be reached at (402) 474-5557.

**DVAuction**  
Broadcasting Real-Time Auctions

**Full Service Livestock Marketing**

**Video - Photography - The Stock Exchange - Ring Service - Banner Ads - Onsite Viewing Service**

# Addison Brangus Farms

## PERFORMANCE SALE

*Leisa and I would like to welcome everyone to the 2021 Addison Brangus Farms and Friends Third Annual "PERFORMANCE" Sale.*

We are very excited to host our third sale. The Brangus and Ultrablack cattle in this sale represent our commitment, along with our sale partners' commitment to the breed's most elite EPDs and superior performance cattle. You will find distinguished genetics and first-rate quality throughout the sale order.



First and foremost, we at Addison Brangus Farms wish to thank our Heavenly Father for allowing us to be where we are today. *Our God has truly blessed us immeasurably, and we give him all the glory.* (Ephesians 5:20)

Secondly, we want to express our sincerest gratitude to our outstanding sale partners who have labored diligently in preparing their animals for this event. We could not be here without you. The cattle in this sale represent numerous farms and ranches located widely over the Southeast.

Also, we would like to express our genuine appreciation to all of the following for their immense help with our sale: American Marketing Service staff-Mark Cowan, Richard Hood, Trey Kirkpatrick, and Matt Jones; Auctioneer-Doak Lambert; Catalog Coordinator-Lea Stokes; Cattle Solutions-Kyle Devoll; Wade and Blaine Fisher and the staff at IDEAL Video Productions; and last but not least-Hoagie and Callahan Parish and their crew at the Cullman Stockyard.

In conclusion, the "Performance" Sale is offering a comprehensive variety of Brangus and Ultrablack cattle. These include open and bred heifers, cow/calf pairs, 3-in-1's, donor prospects, bred cows, show animal prospects, embryo lots, semen lots, and also after the registered sale we will have our commercial bred and open heifer sale. These commercial heifers will be sired by, exposed to or AI'd to an Addison Brangus Farms bull.

The Addison Brangus Farms and Friends "Performance" Sale offers something for everyone. Please allow us to assist you in your cattle program.

Sincerely,

*Wayne & Leisa*

Wayne and Leisa Addison  
(205) 412-5356



WAYNE & LEISA ADDISON



**THE RESULT OF OUR VERY FIRST  
BRANDING AT ADDISON BRANGUS FARMS!**

# Addison Brangus Farms

## PERFORMANCE SALE

**Saturday, October 9, 2021 • 11 am CST**  
Cullman Stockyard, Cullman, Alabama

*Hosted by Addison Brangus Farms*



### ADDISON BRANGUS FARMS

Wayne & Leisa Addison • (205) 412-5356  
1043 County Highway 130  
Winfield, Alabama 35594  
AddisonBrangusFarms.com  
addisonbrangusfarms@yahoo.com

*Consignors...*

#### AV BRANGUS

Alan & Miranda Varner  
(931) 212-2682

#### B2K FARM

Brett Basden, (334) 444-6258

#### CJC FARM

Jacob Cocke, (931) 273-4640

#### DS FARMS

Davy & Wendy Sneed  
(931) 934-2184

#### EAST RIDGE CATTLE

Geoffery Lingerfeldt  
(256) 996-7141

#### EC BRANGUS, LLC

Evon & Carol Crooks  
(336) 817-6890

#### G&R BRANGUS

Larry Galloway, (256) 603-1945  
David Roadruck, (256) 582-1950

#### HARTNESS BRANGUS

Steve Hartness, (423) 426-4028

#### HAYNES FARMS

Danny Haynes, (256) 493-0787

#### HH BRANGUS

Bubba Harden, (423) 619-0775

#### JACKSON FARMS

Justin Jackson, (423) 447-3375

#### JRT BRANGUS

Jeff Thomas, (770) 289-6539

#### LAS PALOMAS

Pepe Medina, (770) 527-3468

#### L&W CATTLE COMPANY

Doug & Glenda Williams  
(336) 745-5252, cell

#### MAGNOLIA CREEK BRANGUS

Paul Ncaise, (228) 304-7523

#### JOHN NORRIS

(205) 412-3398

#### PEAR LANE BRANGUS

Todd Keeling, (417) 389-0468

#### QUAIL VALLEY FARMS

Ricky Cleveland, (205) 533-5049

#### ROADRUCK BRANGUS

David Roadruck, (256) 582-1950

#### SADDLE HILL CATTLE CO.

John & Nicole Holley  
(334) 447-6685

#### SALACOA VALLEY FARMS

(770) 337-2295

#### SPUR S CATTLE

Kendall Stennett, (601) 410-4003

#### STINSON BRANGUS

Alvin & Debbie Stinson  
(334) 376-2454

#### SUNSHINE ACRES BRANGUS

Jamey Reynolds, (256) 452-2240

#### T3 BRANGUS

Trey Cuevas, (601) 434-3045

#### TTT RANCHES, LLC

Jimmy Trice & Family  
(205) 270-6488

#### TANNER FARMS

Gary Tanner, (601) 319-6610

#### TUCKER FARMS

Travis Tucker, (205) 296-6749

#### VANNA FARMS

Lee McGarity, (706) 498-7695

#### WHITLEY CATTLE COMPANY

Steve Whitley, (919) 632-5107

### Auctioneer

Doak Lambert • (972) 839-6485  
License #908

### Sale Location

Cullman Stockyard *Easily accessed from*  
75 County Road 1339 *I-65 & Highway 157*  
Cullman, Alabama 35058

*Located just 5 minutes east of Interstate 65 Exit 310 in Cullman.*



### Accommodations

*Hampton Inn* • (256) 739-444  
6100 Alabama Highway 157 • Cullman, Alabama

*Holiday Inn Express* • (256) 736-1906  
2052 Hayes Drive NW • Cullman Alabama

*Comfort Suites* • (256) 255-5999  
2048 St Joseph Dr NW • Cullman, Alabama

*La Quinta Inn & Suites* • (256) 775-9500  
2054 St. Joseph Dr. NW • Cullman, Alabama

### Publications Represented

*Southern Livestock Standard* – Michael Sturgess  
*Special Assignment* – Jimmy Fetner  
*Special Assignment* – Tim Dietrich  
*Brangus Journal* • *The Ear*  
*Alabama Cattleman* • *Cattle Business in Mississippi*

### Catalog Production

The Horseshoe Group • Lea Stokes • (210) 872-2727

### Air Transportation

Birmingham-Shuttlesworth International Airport

### Trucking

Clayton Williams (706) 768-3533 • Mike Cox, (214) 505-9879  
Trucking will be available sale day.

### Load Out

Cattle may be loaded out during or after the sale and after proper settlement is made.

### Health Papers

Health papers will be provided on each lot in the sale suitable for interstate shipment.

**PLEASE BRING THIS CATALOG WITH YOU SALE DAY!**

## Sale Management

American Marketing Services  
P.O. Box 10  
Wheelock, Texas 77882  
www.amscattle.com  
Richard Hood  
(979) 224-6150, richardh@amscattle.com  
Trey Kirkpatrick  
(979) 324-5518, treyk@amscattle.com  
Mark Cowan  
(903) 495-4522, markc@amscattle.com



## Sight Unseen Purchase Option

If you are unable to attend the auction in person or watch DV Auctions Internet Broadcast, simply contact the AMS marketing team, Wayne Addison or the individual consignors who know their cattle better than anyone.

- Describe your selection criteria and the type of female(s) and/or bull(s) you wish to purchase and your price range.
- You pay only the bid price, just as if you were bidding in person.
- We will call after the sale to confirm your purchase and you can confirm your payment method and arrange shipping.
- You decide if the animal meets your criteria upon delivery. If you are not happy with your purchase, you don't own it.
- It is as simple as that. 100% Satisfaction guaranteed!

# SCHEDULE

## FRIDAY, OCTOBER 8

12 Noon Cattle available for viewing  
Cullman Stockyard

## SATURDAY, OCTOBER 9

8 AM Coffee Available  
8 AM Cattle available for viewing  
11 AM **The Performance Sale**, Cullman Stockyard

## SALE SITE

Cullman Stockyard • (256) 734-4531  
Hoagie Parish • Callahan Parish  
75 County Road 1339  
Cullman, Alabama 35058

*Easily accessed from  
I-65 & Highway 157*

This sale will be broadcast live on the internet.

**DVAuction**  
Broadcasting Real-Time Auctions  
Real time bidding & proxy bidding available.

# The PERFORMANCE SALE

## WELCOME TO THE THIRD ANNUAL PERFORMANCE SALE!

As you peruse the catalog you will find some of the premier herds in the Southeastern United States represented. In addition, you will find EPD combinations unmatched in any sale you will attend. These premier programs have dug deep to bring you cattle that match their reputations. You will find cattle that boast 8, 9, 12, and 14 EPD traits ranking in the entire breed's top 35% or greater and you will find these statistically superior cattle throughout the offering. That is the reason we are calling it The Performance Sale and we hope you appreciate the cattle and the people as much as we do.

We have 8 powerful 3N1's and spring pairs with some top calves at side and carrying the service of some of the breed's top herd sires. You will find 8 bred cows; some could be pairs by sale day. From a pedigree and quality vantage point, they stack near the top of the breed. There is power in abundance in the 35 bred heifers offered and they are carrying the service of some of the greatest curve bending calving ease Brangus and UB herd sires in the land.

We are especially proud of the depth and quality in the Open Heifers. Many are statistically superior with cutting edge pedigrees and a lifetime of productivity in front of them.

We are again featuring a set of commercial bred and open heifers in this sale. They are better than ever and we have over 100 consigned. All bred commercial females are bred to an Addison Brangus Bull and many are also sired by an Addison bull. We realize as seedstock providers, our first responsibility to our customers is providing them with the genetics to compete in today's beef industry, and as always, we strive to add value for your purchases.

**We invite you to join all of us at the Cullman Stockyards in Cullman Alabama on October 9th at 11 am for the third annual Performance Sale.** We think you will find a really good set of cattle and a great group of people dedicated to the improvement of the cattle industry.

*American Marketing Services*





**BWCC MS WELL SAID 222A • Dam of Lot 1**



*nancy*  
**STONEWALL OF RRR 222W6 • Sire of Lots 1A, 3, 56**

**1**

## ABF MS INTERNATIONAL 222C

Born: 1/27/2015 UB10289005 Gen: 1 PHN: 222C 3-in-1 Addison Brangus Farms

S A V INTERNATIONAL 2020  
EA17318795

S A V HARVESTOR 0338

S A V EMBLYNETTE 5483

BWCC MS WELL SAID 222A  
R10251961

BRANGUS  
GE-EPDS

MC NUFF SAID 192X

BWCC MS DEAD ON 222X

S A V HERITAGE 6295

S A V EMBLYNETTE 7749

S A V 8180 TRAVELER 004

S A V EMBLYNETTE 7260

MC NUFF SAID 889T50

MISS 4C LEAD GUN 192P4

MC DEAD ON 535U8

BWCC MS LEAD GUN 222U3

BW	WW	YW	REA	IMF	FT												
92 lbs. (103%)	689 lbs. (109%)	1235 lbs. (113%)	12.49 (105%)	3.61 (102%)	0.7 (163%)												
CEB	BW	WW	YW	M	TM	CEM	SC	REA	IMF	FT	Hfr	Prg	Stay	Cow	Wt	TI	FI
2.4	3.2	42	89	9	31	2.6	0.65	0.6	0.18	-0.005	3.15	1.71	-2.31	3.8	2.59		

She is a SAV International daughter who posts a 364 day calving interval on 5. She also records top 30% or greater EPDs for 10 Traits led by top 1% Fertility Index, 2% YW, 4% WW and Terminal Index, 10% REA and top 15% IMF. *CAPC*

**Breeding:** AI'd 6/10/21 to DMR Empire 795D12, R10323531. Pasture exposed to ABF Blackstone 23G2, R10410461 from 6/20/21 to 7/22/21.

**1A**

## ABF MS STONEWALL 222J

Born: 3/19/2021 UB10475150 Gen: 2 PHN: 222J 3-in-1 Addison Brangus Farms

STONEWALL OF RRR 222W6  
R10150860

CSONKA OF BRINKS 30R4

MS BRINKS LOMBARDI 222S20

ABF MS INTERNATIONAL 222C  
UB10289005

S A V INTERNATIONAL 2020

BWCC MS WELL SAID 222A

LEAD GUN OF BRINKS 222K14

MISS BRINKS UPPERCUT 30L18

LOMBARDI OF BRINKS 46BN10

MISS BRINKS PICASSO 222K

S A V HARVESTOR 0338

S A V EMBLYNETTE 5483

MC NUFF SAID 192X

BWCC MS DEAD ON 222X

BW	WW	YW	REA	IMF	FT												
60 lbs. (83%)																	
CEB	BW	WW	YW	M	TM	CEM	SC	REA	IMF	FT	Hfr	Prg	Stay	Cow	Wt	TI	FI
7.1	-0.6	30	62	11	26	3.4	0.77	0.6	0.17	-0.015	3.08	0.74	-11.49	3.12	2.69		

Stonewall daughters make great cows. She projects an incredible 13 EPD traits ranking in the breed's top 35% or greater with light birth and calving ease, big growth, Milk and carcass and top 1% Fertility Index. *CAPC*



## ABF Customer Testimonial

"Hey Wayne, just wanted to update you on my bull I got from you. I weaned calves Sunday and after looking back at last years report, he definitely made a difference. I only used cows that had been bred to a Brangus bull the previous year and had calved a calf of the same sex (apples to apples) for comparison. The steer calves weaning weight increased by an average of 64.4 pounds and heifers increased by an average of 62.5 pounds. I am pleased with his performance and look forward to seeing how his daughters grow out. My favorite steer by my bull had an adjusted weaning weight of 659 pounds straight off the cow, with no feed. I felt good about that and hope to duplicate ones like him in the future."

Mark Hill, Phil Campbell, Alabama

2

# AV MS HOT SHOT 10G2

Born: 1/31/19 R10423291 Gen: 1 PHN: 10G2 3-in-1 AV Brangus

BWCC HOT SHOT 192D31  
UB10349294

BWCC SLICK 7B  
BWCC MS STATEMENT 192B48

S A V CHILL FACTOR 1418  
BWCC MS FLIGHT DECK 7Z  
BWCC STATEMENT 036Z  
BWCC MS ELEGIDO 192Z50  
MC JOHN WAYNE 165N3  
MC MS EXTRAVAGANT 889P4  
CCR SLEEP EASY 301J5  
CCR SHOSHONE BARBARA 10F2

BWCC MS NUFF SAID 10X  
R10177818

BRANGUS  
GE-EPDS

MC NUFF SAID 889T50  
MS IRON FARM 301J5-10N3

BW	WW	YW	REA	IMF	FT											
75 lbs. (100%)	661 lbs. (100%)	820 lbs. (100%)	9.69 (100%)	4.3 (100%)	0.3 (100%)											
CED	BW	WW	YW	M	TM	CEM	SC	REA	IMF	FT	Hfr	Prg	Stay	CowWt	TI	FI
7.1	0.4	37	75	10	29	3.2	0.59	0.47	0.15	-0.026	3.3	1.32	-2.08	3.45	2.05	

10G2 is a first calf heifer pair that comes from the heart of our embryo program. Her donor dam, 10X, has been the cornerstone of our program for several years, producing numerous replacement females for us, including this Hot Shot daughter. 10G2 is a first generation R female, boasting 13 EPD traits above breed average, of which 9 of those are top 20%. She's an easy keeping female, perfect udder and structure, with an extremely gentle disposition. Heifer calf at side is halter broken, and sired by our calving ease high growth bull, 192B. This female will make a great addition to any herd.

**Breeding:** AI'd 4/28/2021 to BWCC Big Lake 111F4, UB10399796. Pasture exposed BWCC Reward 111C11, UB10321518 from 5/15/2021 to 8/1/2021. Palpated safe to 111C11.



BWCC MS NUFF SAID 10X • Dam of Lot 2

2A

# AV MS. 192 ROCK SOLID 10J3

Born: 3/2/21 UB10477515 Gen: 2 PHN: 10J3 Heifer Calf AV Brangus

AV ROCK SOLID 192B  
UB10290841

S A V ROCK SOLID 2251  
BWCC MS ELEGIDO 192Z50

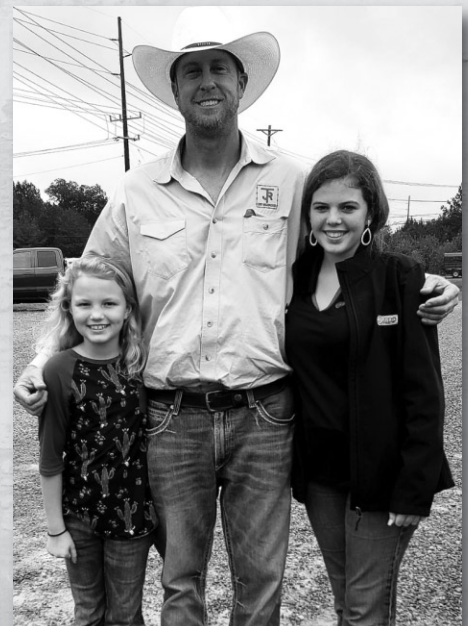
S A V 707 RITO 9969  
S A V MADAME PRIDE 8180  
MC ELEGIDO 924W6  
BWCC MS REVELATION 192W4  
BWCC SLICK 7B  
BWCC MS STATEMENT 192B48  
MC NUFF SAID 889T50  
MS IRON FARM 301J5-10N3

AV MS HOT SHOT 10G2  
R10423291

BWCC HOT SHOT 192D31  
BWCC MS NUFF SAID 10X

BW	WW	YW	REA	IMF	FT											
66 lbs. (90%)																
CED	BW	WW	YW	M	TM	CEM	SC	REA	IMF	FT	Hfr	Prg	Stay	CowWt	TI	FI
6.3	0.8	38	78	9	28	2.7	0.73	0.53	0.19	-0.028	3.3	1.46	2.12	3.62	1.74	

This young heifer is halter broken and posts a dynamic combination of EPDs with 12 traits ranking in the breed's top 35% or greater.





DS MS STONEWALL 27E

### 3 DS MS STONEWALL 27E

Born: 3/13/17 R10357673 Gen: 6 PHN: 27E 3-in-1 DS Farms

STONEWALL OF RRR 222W6  
R10150860

CSONKA OF BRINKS 30R4  
MS BRINKS LOMBARDI 222S20

LEAD GUN OF BRINKS 222K14  
MISS BRINKS UPPERCUT 30L18  
LOMBARDI OF BRINKS 468N10  
MISS BRINKS PICASSO 222K  
SUNDANCE OF BRINKS 392G9  
MISS BRINKS TROOPER 541H2  
GARRETT OF BRINKS 789P  
QCB 27W

DS MS HOLLY 27A2  
R10248964

BRANGUS  
GE-EPDS

TRACKER OF BRINKS 541M8  
DS MS CAROLINE 27Y

BW	WW	YW	REA	IMF	FT										
78 lbs. (101%)	592 lbs. (101%)	778 lbs. (102%)	10.81 (96%)	4.62 (114%)	0.24 (99%)										
CED	BW	WW	YW	M	TM	CEM	SC	REA	IMF	FT	Hfr Prg	Stay	CowWt	TI	FI
4.5	0.2	28	51	8	22	3.4	0.7	0.48	0.13	-0.036	1.97	-0.11	-16.84	2.56	1.64

She is a Stonewall daughter out of our most productive cow family, 27. Her dam sold to Quail Valley Farms in the first Performance Sale, and we will retain either her or her Hollywood daughter. She records top 10% Fertility Index, 20% REA, 25% IMF, 30% WW and Terminal Index and top 35% YW. **We are selling choice of her or her daughter at side.**

**Breeding:** AI'd 5/25/21 to QVF PR Empower 30G16, R10412716. Pasture exposed to DS Mr Hollywood 535F, R10397242 from 6/16/21 to 8/21/21.



### 3A DS MS HOLLYWOOD 27J

Born: 3/6/21 R10477445 Gen: 7 PHN: 27J Heifer Calf DS Farms

HOLLYWOOD OF SALACOA 23A53  
R10251840

NEW VISION OF SALACOA 209Y2  
MS SVF PATTON 23Y66

LAMBERT OF BRINKS 317R3  
MS BRINKS BRIGHT SIDE 209L11  
PATTON OF BRINKS 30T22  
SVF MS 23M28  
CSONKA OF BRINKS 30R4  
MS BRINKS LOMBARDI 222S20  
TRACKER OF BRINKS 541M8  
DS MS CAROLINE 27Y

DS MS STONEWALL 27E  
R10357673

STONEWALL OF RRR 222W6  
DS MS HOLLY 27A2

BW	WW	YW	REA	IMF	FT										
64 lbs. (89%)															
CED	BW	WW	YW	M	TM	CEM	SC	REA	IMF	FT	Hfr Prg	Stay	CowWt	TI	FI
5.6	-0.3	30	56	-3	12	3.8	0.7	0.57	0.13	-0.043	1.52	-0.42	-18.7	2.71	1.25

She is a Hollywood daughter out of our most productive cow family. She projects top 15% REA, 20% WW, YW and IMF and top 1% Cow Weight. We think a lot of this fancy heifer and if she is the choice, we wish to retain 1 IVF flush on this heifer at the buyers convenience and our expense.

**Retaining 1 IVF flush on this heifer at the buyers convenience and our expense.**

**Selling choice of her or her dam, Lot 3.**

### 4 T3 MS HOLLYWOOD 30G4

Born: 1/31/19 R10414091 Gen: 6 PHN: 30G4 3-in-1 T3 Brangus

HOLLYWOOD OF SALACOA 23A53  
R10251840

NEW VISION OF SALACOA 209Y2  
MS SVF PATTON 23Y66

LAMBERT OF BRINKS 317R3  
MS BRINKS BRIGHT SIDE 209L11  
PATTON OF BRINKS 30T22  
SVF MS 23M28  
CB FINAL CUT 924X  
OAKS MS PATTON 302X3  
ATLANTA OF SALACOA 488Z  
MS BRINKS UNITAS 30T94

T3 MS THREE D 30D  
R10337797

BRANGUS  
GE-EPDS

TJM THREE D 302A  
MS SALACOA ATLANTA 30B5

BW	WW	YW	REA	IMF	FT										
73 lbs. (100%)	639 lbs. (100%)	817 lbs. (100%)	9.2 (100%)	4.28 (100%)	0.17 (100%)										
CED	BW	WW	YW	M	TM	CEM	SC	REA	IMF	FT	Hfr Prg	Stay	CowWt	TI	FI
3.7	1.1	36	68	-4	14	3.5	0.8	0.34	0.23	-0.045	1.46	-0.13	-10.18	3.13	0.62

She is a Hollywood daughter out of the \$65,000, 30D we purchased in Houston a couple of years ago and who now resides at Herndon Farms. She is as deep and soggy as you would expect and records top 10% WW and IMF EPDs with top 15% YW, SC and Terminal Index values. She calved right on time at two years of age.

**Breeding:** AI'd 5/16/21 to BWCC Big Town 192B16, R10266676. Pasture exposed to Salacoa Atlanta 23G89, R10437490 from 5/21/21 to 8/5/21.

### 4A T3 MS MONUMENT 30J2

Born: 2/15/21 R10477180 Gen: 1 PHN: 30J2 Heifer Calf T3 Brangus

BWCC MONUMENT 10D7  
UB10336225

MC BOULDER 889Z14  
BWCC MS RESOURCE 10A10

MC SOMETHING SPECIAL 129W14  
MC MS EXTRAVAGANT 889X4  
S A V RESOURCE 1441  
BWCC MS NUFF SAID 10X  
NEW VISION OF SALACOA 209Y2  
MS SVF PATTON 23Y66  
TJM THREE D 302A  
MS SALACOA ATLANTA 30B5

T3 MS HOLLYWOOD 30G4  
R10414091

HOLLYWOOD OF SALACOA 23A53  
T3 MS THREE D 30D

BW	WW	YW	REA	IMF	FT										
73 lbs. (99%)															
CED	BW	WW	YW	M	TM	CEM	SC	REA	IMF	FT	Hfr Prg	Stay	CowWt	TI	FI
5.9	-0.6	35	62	4	22	4.3	1.19	0.49	0.35	-0.02	2.6	1.18	-5.47	3.38	2.01

This Monument daughter features a royal pedigree and stellar tabulations.



**5****CLVR-ESTRADA MS BUSINESS LINE 56F7**

Born: 11/27/18 R10426917 Gen: 6 PHN: 56F7 3-in-1 Las Palomas Ranch

SUHN'S BUSINESS LINE 30D26  
R10327046VF-OAKS ONLINE 918Y3  
SUHN'S MISS NORTH STAR 30AMC ONSTAR 924W4  
VOREL MS AFFIRMED 918U4  
CRC NORTH STAR 9U8W3  
SUHN'S MISS PATTON 30X5  
LEAD GUN OF BRINKS 222K14  
MISS BRINKS UPPERCUT 30L18  
BRINKS BRIGHT SIDE 607L11  
ESTRADA MS SUPERFLESH 456M2ESTRADA MS CSONKA 56A2  
R10301994  
BRANGUS  
GE-EPDSCSONKA OF BRINKS 30R4  
ESTRADA MS L11 56FMU

BW	WW	YW	REA	IMF	FT										
86 lbs. (100%)	684 lbs. (100%)	989 lbs. (100%)	11.41 (100%)	4.35 (100%)	0.17 (100%)										
CED	BW	WW	YW	M	TM	CEM	SC	REA	IMF	FT	Hfr Prg	Stay	CowWt	TI	FI
4.9	2	35	67	10	27	3.7	1.22	0.64	0.11	-0.042	2.52	-0.26	-1.53	3.07	0.59

She is a first calf heifer by Business Line and out of a Csonka daughter that was crowned champion of the Mexican Brangus Breeders shows when she was on the circuit. She records top 10% WW and REA, 15% YW and Terminal Index with top 25% IMF EPDs. She is doing a wonderful job with her twin heifers at side.

**Breeding:** Pasture exposed to HF/Oaks Csonka 1302E8, R10359547 from 7/1/21 to sale day.



ESTRADA MS CSONKA 56A2 • Dam of Lot 5

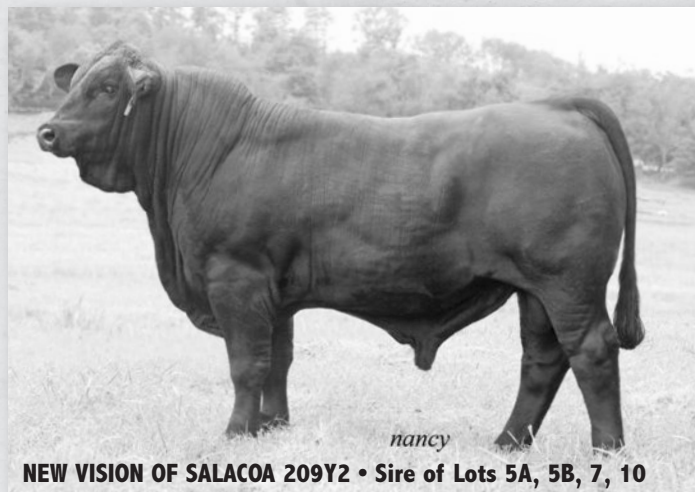
**5A****LP MS NEW VISION 56J**

Born: 3/5/21 R10471555 Gen: 7 PHN: 56J Heifer Calf Las Palomas Ranch

NEW VISION OF SALACOA 209Y2  
R10204856LAMBERT OF BRINKS 317R3  
MS BRINKS BRIGHT SIDE 209L11LEAD GUN OF BRINKS 222K14  
MS BRINKS GOOD FORTUNE 317M  
BRIGHT SIDE OF BRINKS 789G5  
MISS BRINKS NEWSDAY 209G9  
VF-OAKS ONLINE 918Y3  
SUHN'S MISS NORTH STAR 30A  
CSONKA OF BRINKS 30R4  
ESTRADA MS L11 56FMUCLVR-ESTRADA MS BUSINESS LINE 56F7  
R10426917  
BRANGUS  
GE-EPDSSUHN'S BUSINESS LINE 30D26  
ESTRADA MS CSONKA 56A2

BW	WW	YW	REA	IMF	FT										
60 lbs. (100%)															
CED	BW	WW	YW	M	TM	CEM	SC	REA	IMF	FT	Hfr Prg	Stay	CowWt	TI	FI
4.5	1.8	32	58	5	20	3.8	0.77	0.65	0.03	-0.041	1.61	-0.56	-17.59	2.54	1.22

These twin New Vision daughters are good and a tribute to their first calf heifer dam and her ability to be a mother. They project a well balanced set of EPDs with plenty of fertility, carcass and growth.



nancy

NEW VISION OF SALACOA 209Y2 • Sire of Lots 5A, 5B, 7, 10

**5B****LP MS NEW VISION 56J2**

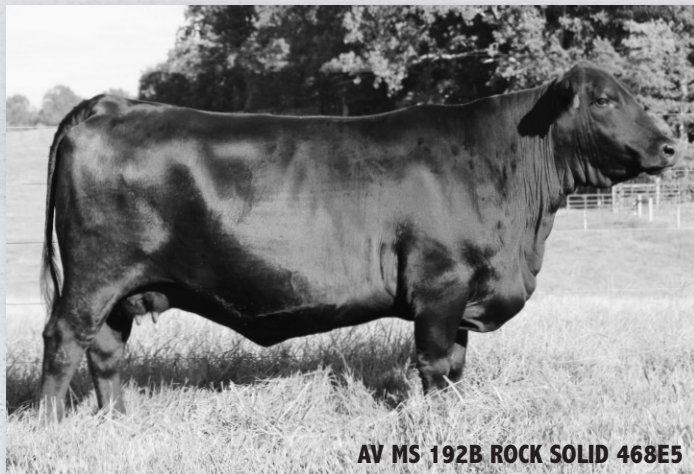
Born: 3/5/21 R10471556 Gen: 7 PHN: 56J2 Heifer Calf Las Palomas Ranch

NEW VISION OF SALACOA 209Y2  
R10204856LAMBERT OF BRINKS 317R3  
MS BRINKS BRIGHT SIDE 209L11LEAD GUN OF BRINKS 222K14  
MS BRINKS GOOD FORTUNE 317M  
BRIGHT SIDE OF BRINKS 789G5  
MISS BRINKS NEWSDAY 209G9  
VF-OAKS ONLINE 918Y3  
SUHN'S MISS NORTH STAR 30A  
CSONKA OF BRINKS 30R4  
ESTRADA MS L11 56FMUCLVR-ESTRADA MS BUSINESS LINE 56F7  
R10426917  
BRANGUS  
GE-EPDSSUHN'S BUSINESS LINE 30D26  
ESTRADA MS CSONKA 56A2

BW	WW	YW	REA	IMF	FT										
60 lbs. (100%)															
CED	BW	WW	YW	M	TM	CEM	SC	REA	IMF	FT	Hfr Prg	Stay	CowWt	TI	FI
4.9	1.2	26	50	3	16	3.8	0.66	0.6	0.09	-0.04	1.61	-0.56	-17.59	2.36	1.23

These twin New Vision daughters are good and a tribute to their first calf heifer dam and her ability to be a mother. They project a well balanced set of EPDs with plenty of fertility, carcass and growth.





AV MS 192B ROCK SOLID 468E5



## 6 AV MS 192B ROCK SOLID 468E5

Born: 10/20/17 UB10379151 Gen: 2 PHN: 468E5 3-in-1

AV Brangus

AV ROCK SOLID 192B  
UB10290841

BWCC SHE'S SPECIAL 468Z  
R10227328

BRANGUS  
GE-EPDs

S A V ROCK SOLID 2251

BWCC MS ELEGIDO 192Z50

MC SOMETHING SPECIAL 129W14

LL MS NEW DIRECTION 468U8

S A V 707 RITO 9969

S A V MADAME PRIDE 8180

MC ELEGIDO 924W6

BWCC MS REVELATION 192W4

MC JETHRO 00S3

MC MS LEAD GUN 129T12

MC NEW DIRECTION 000 M24

MISS BRINKS CADENCE 468G15

BW	WW	YW	REA	IMF	FT										
70 lbs. (93%)	639 lbs. (100%)	704 lbs. (100%)	8.69 (100%)	4.96 (100%)	0.22 (100%)										
CED	BW	WW	YW	M	TM	CEM	SC	REA	IMF	FT	Hfr Prg	Stay	Cow Wt	TI	FI
6.6	0.4	36	79	14	32	3.4	1.06	0.64	0.26	-0.015	3.38	1.73	8.14	3.87	1.72

She is a SAV Rock Solid granddaughter who traces to the great 468G15 donor on the bottom side of her pedigree. This young female has been a herd favorite since birth. She is the natural calf out of a top donor here at AV, and has been on our short list of one to flush. Moderate in her design, 468E5 is a super long female, with tremendous rib shape, thickness and length. More interesting, she has a remarkable EPD profile with 9 traits in the top 10%, including WW, YW, REA and IMF. She raised our top replacement heifer last year, which we are retaining in the herd. Her heifer calf at side has the same look and design as her older sister. Look this pair up on sale day, you won't be disappointed.

**Breeding:** AI'd 5/8/21 to BWCC McQueen 192E24, UB10359871. Pasture exposed to BWCC Harvester 10E90, UB10379155 and EF Mile Marker, R10457206 from 5/15/21 to 8/1/21. Palpated safe to bulls. AV will pay for DNA of calf.

## 6A AV MS 111 REWARD 468J11

Born: 3/29/21 UB10477522 Gen: 2 PHN: 468J11 Heifer Calf

AV Brangus

BWCC REWARD 111C11  
UB10321518

AV MS 192B ROCK SOLID 468E5  
UB10379151

BRANGUS  
GE-EPDs

S A V REWARD 3198

BWCC MS RIGHTEOUS 111A6

AV ROCK SOLID 192B

BWCC SHE'S SPECIAL 468Z

S A V RESOURCE 1441

S A V PRISCILLA 6689

MC RIGHTEOUS 924X2

MC MS STRYKER 111U25

S A V ROCK SOLID 2251

BWCC MS ELEGIDO 192Z50

MC SOMETHING SPECIAL 129W14

LL MS NEW DIRECTION 468U8

BW	WW	YW	REA	IMF	FT										
80 lbs. (110%)															
CED	BW	WW	YW	M	TM	CEM	SC	REA	IMF	FT	Hfr Prg	Stay	Cow Wt	TI	FI
4.4	2.8	46	92	7	30	2.8	1.09	0.7	0.23	-0.023	3.32	2	9.3	4.09	1.51

She is stellar in her EPD projections with a world of power and carcass.

## 7 CLVR MS NEW VISION 889B3

Born: 10/19/14 R10276510 Gen: 3 PHN: 889B3 3-in-1

Las Palomas Ranch

NEW VISION OF SALACOA 209Y2  
R10204856

CLVR MISS. JENNY 889Z2  
R10227030

LAMBERT OF BRINKS 317R3

MS BRINKS BRIGHT SIDE 209L11

CSONKA OF BRINKS 30R4

MC MS 338 RIGHT TIME 889R6

LEAD GUN OF BRINKS 222K14

MS BRINKS GOOD FORTUNE 317M

BRIGHT SIDE OF BRINKS 789G5

MISS BRINKS NEWSDAY 209G9

LEAD GUN OF BRINKS 222K14

MISS BRINKS UPPERCUT 30L18

HYLINE RIGHT TIME 338

MC MS MADISON 889J6

BW	WW	YW	REA	IMF	FT										
84 lbs. (110%)	654 lbs. (108%)	1069 lbs. (111%)	12.26 (105%)	4.24 (92%)	0.32 (87%)										
CED	BW	WW	YW	M	TM	CEM	SC	REA	IMF	FT	Hfr Prg	Stay	Cow Wt	TI	FI
2.3	3.3	32	60	6	22	3.2	0.78	0.66	0.07	-0.048	1.98	-0.01	-14.3	2.64	1.23

She is deep made and powerful daughter of New Vision who writes 10 EPD traits ranking in the breed's top 35% or greater. Her dam is a Csonka daughter out of a first generation Right Time daughter. She boasts top 10% REA, 20% YW and Fertility Index, 25% WW and Terminal Index with top 35% IMF EPDs.

**Breeding:** Pasture exposed to HF/Oaks Csonka 1302E8, R10359547 from 7/1/21 to sale day.

## 7A LP MAIN EVENT 889J

Born: 3/19/21 R10471565 Gen: 4 PHN: 889J Bull Calf

Las Palomas Ranch

CLVR-B2K MAIN EVENT 302E6  
R10350192

CLVR MS NEW VISION 889B3  
R10276510

BRANGUS  
GE-EPDs

DMR GUARDIAN 222C21

MS DMR ROLL TIDE 302C5

NEW VISION OF SALACOA 209Y2

CLVR MISS. JENNY 889Z2

CRC GUARDIAN 9U8U5

MS BRINKS BS 607L11 222S3

DMR ROLL TIDE 222Z29

MS DMR 607L11 302W11

LAMBERT OF BRINKS 317R3

MS BRINKS BRIGHT SIDE 209L11

CSONKA OF BRINKS 30R4

MC MS 338 RIGHT TIME 889R6

BW	WW	YW	REA	IMF	FT										
86 lbs. (95%)															
CED	BW	WW	YW	M	TM	CEM	SC	REA	IMF	FT	Hfr Prg	Stay	Cow Wt	TI	FI
4.7	2.2	29	61	9	24	3.2	0.8	0.62	0.06	-0.044	1.92	0.14	-10.33	2.71	1.03

This bull calf is sired by Main Event and is a well balanced blend of EPDs. He projects 11 EPD traits ranking in the breed's top 35% or greater.

**8****CNF MISS JANE 890F7**

Born: 12/18/18 R10439031 Gen: 5 PHN: 890F7 3-in-1

L&amp;W Cattle Co.

CNF ROBERTSON 406U5 77A23  
R10269620

BRINKS ROBERTSON 406U5

CNF MISS ISAAC 77S12

ROBERTSON OF BRINKS 209S9  
MS BRINKS BEST BET 406M4  
SVF MR 535N32  
CNF LINK JEWEL 77J3  
BRINKS BRIGHT SIDE 607L11  
MISS BRINKS BEST BET 392K17  
CNF DUKE 6 22L2  
CEDAR CREEK 890JCNF MISS JANE 890T  
R10108372

JESSE OF BRINKS 392P105

CNF MISS JANE 890P2

BW	WW	YW	REA	IMF	FT										
76 lbs. (99%)	707 lbs. (114%)	871 lbs. (106%)													
CED	BW	WW	YW	M	TM	CEM	SC	REA	IMF	FT	Hfr Prq	Stay	CowWt	TI	FI
5.1	1	32	57	6	22	2.4	0.45	0.17	0	-0.045	1.92	0.7	-15.1	2.26	1.59

She features Robertson, Jesse and Duke breeding in her pedigree and the 890 cow family on the bottom and 77 on the top have always been extremely productive cow families. She records top 10% Fertility Index, 20% WW, 25% YW and top 35% Fertility Index. She has done a great job on her bull calf at side.

**Breeding:** Pasture exposed to L&W Mr Final Answer UB 914H, UB10447664 from 3/11/21 to 9/1/21.

**8A****L&W MR GRANITE 890J7**

Born: 2/20/21 R10474597 Gen: 2 PHN: 890J7 Bull Calf

L&amp;W Cattle Co.

CNF GRANITE 541F16  
R10392117

MC GRANITE 834B

OAKS MS ATLANTA 541C54

MC BOULDER 889Z14  
MC MS 778 TRAVELER 834Z  
ATLANTA OF SALACOA 488Z  
OAKS MS CSONKA 541T7  
BRINKS ROBERTSON 406U5  
CNF MISS ISAAC 77S12  
JESSE OF BRINKS 392P105  
CNF MISS JANE 890P2CNF MISS JANE 890F7  
R10439031

CNF ROBERTSON 406U5 77A23

CNF MISS JANE 890T

BW	WW	YW	REA	IMF	FT										
81 lbs. (100%)															
CED	BW	WW	YW	M	TM	CEM	SC	REA	IMF	FT	Hfr Prq	Stay	CowWt	TI	FI
5.3	0.7	34	65	7	24	2.8	0.41	0.34	0.11	-0.036	2.18	0.76	-10.88	2.89	1.63

His sire is a Granite son out of one of the best Atlanta daughters in the breed, 541C54. He projects top 10% Fertility Index, 20% WW and YW, 25% Terminal Index and top 35% IMF. He puts it in a package you will like.

**9****TTT MS DEFENDER 23D1**

Born: 1/3/16 R10307641 Gen: 5 PHN: 23D1 Fall Bred Cow TTT Ranches, LLC

DMR DEFENDER 594A20  
R10254773

CRC GUARDIAN 9U8U5

WR MS DUKE 594S7

CSONKA OF BRINKS 30R4  
MISS 4L BEST BET 9U8P5  
WR DUKE 228/F  
WR MS TRANSFORMER VI 594N3  
HUB OF BRINKS 392Z  
MISS BB NEW TYSON 535B15  
NEW ERA OF BRINKS 541J37  
SALACOA PINE LASS 23D2SVF MS CADENCE 23S69  
R10078220

CADENCE OF BRINKS

SVF MS 23M28

BW	WW	YW	REA	IMF	FT										
70 lbs. (102%)	703 lbs. (105%)	993 lbs. (101%)	11.41 (90%)	1.75 (59%)	0.22 (105%)										
CED	BW	WW	YW	M	TM	CEM	SC	REA	IMF	FT	Hfr Prq	Stay	CowWt	TI	FI
3.7	2	33	62	11	27	4.6	0.52	0.31	0.05	-0.068	2.76	0.68	-1.03	2.67	0.43

Her sire is the \$20,000 Defender bull from DMR. Her donor dam is a full sister to On Task. This big bodied and powerful female reaches top 20% WW and YW with top 25% Terminal Index and top 35% Milk EPDs. She is safe to our good Brickhouse son who posts top 4% WW and REA and top 5% IMF EPDs.

**Breeding:** Pasture exposed to CB Brickhouse 60G18, R10417890 from 12/15/20 to 3/1/21. Palpated safe.

**TTT MS DEEFENDER 23D1****10****T3 MS NEW VISION 75D4**

Born: 11/14/16 R10337248 Gen: 6 PHN: 75D4 Fall Bred Cow L&amp;W Cattle Co.

NEW VISION OF SALACOA 209Y2  
R10204856

LAMBERT OF BRINKS 317R3

MS BRINKS BRIGHT SIDE 209L11

LEAD GUN OF BRINKS 222K14  
MS BRINKS GOOD FORTUNE 317M  
BRIGHT SIDE OF BRINKS 789G5  
MISS BRINKS NEWSDAY 209G9  
KO OF BRINKS 392F10  
MISS BRINKS MILKY WAY 541E4  
TYPESETTER OF BRINKS 535G7  
MISS BRINKS NEWSDAY 75F13MS BRINKS NEW ERA 75M21  
R824620BRANGUS  
GE-EPDS

NEW ERA OF BRINKS 541J37

MISS BRINKS TYPESETTER 75K12

BW	WW	YW	REA	IMF	FT										
65 lbs. (93%)	677 lbs. (117%)	936 lbs. (110%)	10.46 (110%)	4.42 (103%)	0.36 (169%)										
CED	BW	WW	YW	M	TM	CEM	SC	REA	IMF	FT	Hfr Prq	Stay	CowWt	TI	FI
4.9	1.3	28	56	4	18	3.9	0.3	0.65	0.02	-0.02	1.02	0.16	-17.19	2.4	1.57

She is sired by New Vision and is a maternal sister to Rice of Brinks and the \$20,000, T3 Deacon out of the great New Era donor, 75M21. She posts EPDs ranking in the breed's top 10% Fertility Index and REA, 30% WW and YW and top 35% Terminal Index.

**Breeding:** AI'd on 12/20/20 to Suhn's Epic 331D16, UB10326791. Pasture exposed to WCC Beacon 331F2-ET, R10417110 from 1/15/21 to 4/1/21. Safe to AI date. ECD: 9/28/21.

**T3 MS NEW VISION 75D4**



**HOLLYWOOD OF SALACOA 23A53**  
Sire of Lots 3A, 4, 11, 14, 19, 36, 50, 58

## 11 SPUR S MS HOLLYWOOD 541F3

Born: 2/13/18 R10389214 Gen: 5 PHN: 541F3 Fall Bred Cow Spur S Cattle

HOLLYWOOD OF SALACOA 23A53  
R10251840

T3 MS CSONKA 541B21  
R10257749

BRANGUS  
GE-EPDS

NEW VISION OF SALACOA 209Y2

MS SVF PATTON 23Y66

CSONKA OF BRINKS 30R4

MS BRINKS TRANSFORMER 541M40

LAMBERT OF BRINKS 317R3  
MS BRINKS BRIGHT SIDE 209L11  
PATTON OF BRINKS 30T22  
SVF MS 23M28  
LEAD GUN OF BRINKS 222K14  
MISS BRINKS UPPERCUT 30L18  
TRANSFORMER OF BRINKS  
MISS BRINKS KO 541J33

BW	WW	YW	REA	IMF	FT										
79 lbs. (100%)	595 lbs. (100%)	765 lbs. (92%)	8.24 (91%)	3.51 (90%)	0.15 (131%)										
CED	BW	WW	YW	M	TM	CEM	SC	REA	IMF	FT	Hfr Prg	Stay	Cow Wt	TI	FI
5	1.6	31	62	0	15	3.7	1.02	0.55	0.1	-0.05	1.75	-0.62	-11.84	2.76	0.61

She is a Hollywood daughter out of the \$23,000, 541B21 donor. She records top 10% SC, 15% REA, 20% Terminal Index and YW, 25% WW and top 30% IMF. Maternal sibs have averaged \$6,875 for Quail Valley. We chose to AI her to Big Town.

**Breeding:** AI'd 5/15/21 to BWCC Big Town 192B16, R10266676. Pasture exposed Salacoa 468D3 Hollywood 10G3, R10438603 and T3 Hollywood 468G3, R10414005 from 5/17/21 to 7/24/21.

## 12 G&R MS CRUISE 323D3 000G

Born: 10/16/19 R10433762 Gen: 1 PHN: 000G Fall Bred Heifer G&R Brangus

BWCC CRUISE 323D3  
UB10349309

BWCC CRUISE 889Z28

BWCC MS ROCK SOLID 323B

MC X FACTOR 889X34

MC MS QUIET LADY 000550

MC ELEGIDO 924W6  
BWCC MS LEAD GUN 889W26  
S A V ROCK SOLID 2251  
BWCC MS ROCK STAR 323X2  
MC JETHRO 00S3  
MC MS 5175 BANDO 889P12  
MC JOHN WAYNE 661N13  
MC MS FOREFRONT 000N2

BW	WW	YW	REA	IMF	FT										
102 lbs. (101%)	634 lbs. (100%)	923 lbs. (100%)													
CED	BW	WW	YW	M	TM	CEM	SC	REA	IMF	FT	Hfr Prg	Stay	Cow Wt	TI	FI
4.9	2.5	37	73	10	28	2.9	0.04	0.59	0.24	-0.025	3.04	2	3.97	3.42	1.69

She is a Cruise daughter and her dam is the powerful Vanna donor, 000A2. She writes a powerful set of EPDs ranking in the breed's top 10% WW, YW, REA, IMF, Terminal and Fertility Index. We chose to AI her to the calving ease Empire and cleanup with our good Atlanta son. She could be a pair by the sale.

**Breeding:** AI'd 11/24/20 to DMR Empire 795D12, R10323531. Pasture exposed to Bar X Mr Atlanta 675G10, R10432883 from 12/12/20 to 2/19/21. Palpated safe.

## 13 QVF MS RIDGEWAY 129G13

Born: 10/21/19 R10427030 Gen: 4 PHN: 129G13 Fall Bred Heifer Quail Valley Farms

MB RIDGEWAY 661B3  
R10277766

MB DEATH VALLEY 568Y

MB MS PATTON 661Y5

ATLANTA OF SALACOA 488Z

MB MS ELEGIDO 129Z

MB MS ATLANTA 129C2  
R10318594

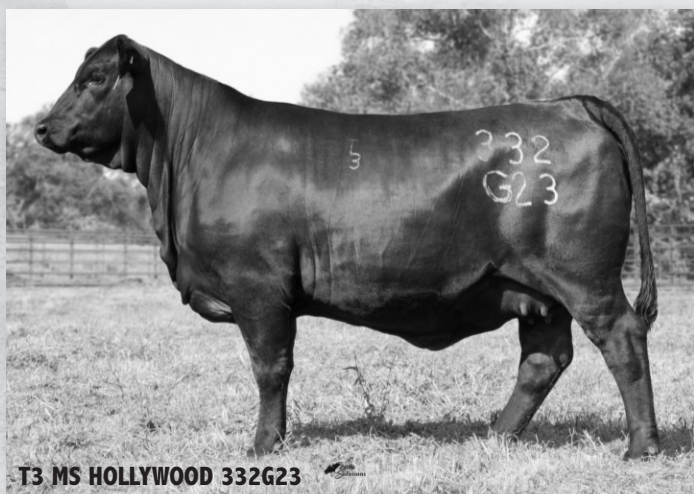
BRANGUS  
GE-EPDS

MC ROCK STAR 924U6  
MB MS ANCHOR 568W  
MC PATTON 129R70  
MB MS JOHN WAYNE 661S5  
LAMBERT OF BRINKS 317R3  
MS SVF CADENCE 488X11  
MC ELEGIDO 924W6  
MB MS INFOCUS 129X16

BW	WW	YW	REA	IMF	FT										
75 lbs. (98%)	558 lbs. (112%)	843 lbs. (115%)	9.98 (113%)	8.71 (155%)	0.25 (118%)										
CED	BW	WW	YW	M	TM	CEM	SC	REA	IMF	FT	Hfr Prg	Stay	Cow Wt	TI	FI
5.5	0.8	38	62	8	27	3.6	0.42	0.6	0.15	-0.024	2.73	1.3	0.56	2.98	1.53

She scanned an 8.7 IMF to ratio 155. She is an outlier. She also writes 10 EPD traits ranking in the breed's top 35% or greater including top 10% WW, REA, Heifer Pregnancy and Fertility Index with top 15% Terminal Index and 20% YW and IMF. She should calve to By Design. **DDPC**

**Breeding:** AI'd 12/17/20 to DMR Strategy 263C6, R10318980. Pasture exposed to By Design of Salacoa 406F10, UB10396325 from 12/23/20 to 2/24/21. Palpated safe.



**T3 MS HOLLYWOOD 332G23**

## 14 T3 MS HOLLYWOOD 332G23

Born: 9/9/19 R10436485 Gen: 7 PHN: 332G23 Fall Bred Heifer T3 Brangus

HOLLYWOOD OF SALACOA 23A53  
R10251840

NEW VISION OF SALACOA 209Y2

MS SVF PATTON 23Y66

HANNIBAL OF BRINKS 784T6

TCB KIOWA PRINCESS U877

MS SALACOA HANNIBAL 332Z10  
R10226439

BRANGUS  
GE-EPDS

LAMBERT OF BRINKS 317R3  
MS BRINKS BRIGHT SIDE 209L11  
PATTON OF BRINKS 30T22  
SVF MS 23M28  
CSONKA OF BRINKS 30R4  
MS BRINKS GOOD FORTUNE 784N9  
SR CADENCE WARRIOR P456  
SR WARRIOR PRINCESS N332

BW	WW	YW	REA	IMF	FT										
70 lbs. (100%)	628 lbs. (100%)	854 lbs. (100%)	10.85 (100%)	4.68 (100%)	0.26 (100%)										
CED	BW	WW	YW	M	TM	CEM	SC	REA	IMF	FT	Hfr Prg	Stay	Cow Wt	TI	FI
4.6	0.8	34	66	-1	16	4	0.77	0.54	0.08	-0.039	1.32	-0.83	-13.66	2.9	0.68

Her full sister sold for \$8,000 last June, her maternal sister sold for \$10,000 the year before and a maternal brother sold for \$14,000 at Salacoa Valley. She boasts top 15% REA and YW, 20% Terminal Index and WW and top 35% IMF EPDs. Proven value here.

**Breeding:** AI'd 12/9/20 to Atlanta of Salacoa 488Z, R10210625. Pasture exposed to T3 Broadway 30E, R10367402 and to Salacoa Missile 803F27, R10413033 from 12/12/20 to 4/1/21. Should calve by sale time.

# 15 MCB MS TEN SPEED 468G1

Born: 1/14/19 UB10403111 Gen: 1 PHN: 468G1 Fall Bred Heifer Magnolia Creek Brangus

S A V TEN SPEED 3022  
EA17633563

A A R TEN X 7008 S A

S A V MADAME PRIDE 1134

MC JETHRO 00S3

MS BRINKS BS 607L11 468S77

MYTTY IN FOCUS

A A R LADY KELTON 5551

S A V BISMARK 5682

S A V MADAME PRIDE 9100

MC JOHN WAYNE 165N3

MC MS STOUT 00M5

BRINKS BRIGHT SIDE 607L11

MISS BRINKS LEAD TIME 468L

MISS SOUTHERN JETHRO 468Y29  
R10215764

BRANGUS  
GE-EPDS

BW	WW	YW	REA	IMF	FT										
83 lbs. (100%)	659 lbs. (107%)	809 lbs. (96%)													
CED	BW	WW	YW	M	TM	CEM	SC	REA	IMF	FT	Hfr Prq	Stay	Cow Wt	TI	FI
4.9	1.9	46	86	2	25	3.7	0.88	0.77	0.29	-0.023	3.1	1.94	2.85	4.07	1.85

She boasts 10 EPD traits ranking in the breed's top 30% or greater including top 2% WW, REA and Terminal Index, 3% YW, 5% IMF, HP and Fertility Index, which is evidenced by her dam's 364-day calving interval on 7 calves. We are retaining a full sister and a maternal half-brother for use in our herd. Due to have a Granite 834B calf prior to sale day.

**Breeding:** Al'd 12/20/20 to MC Granite 834B, UB10275960. Pasture exposed to MCB Stunner 468G8, UB10431020 from 1/31/21 to 6/19/21 and to MCB Relax 919H2, UB10442129 from 6/19/21 to 7/25/21. Checked safe to AI. ECD: 9/28/21.

# 16 MCB MS GRANITE 544G8

Born: 9/11/19 UB10430921 Gen: 2 PHN: 544G8 Fall Bred Heifer Magnolia Creek Brangus

MCB GRANITE 535E3  
R10364388

MC GRANITE 834B

MCB MS MUCHO DINERO 535C3

BRAXTON OF BRINKS 392T36

SOUTHERN 272M BLACKCAP 4295

MS SOUTHERN RITA 95544  
UB10168854

BRANGUS  
GE-EPDS

MC BOULDER 889Z14

MC MS 778 TRAVELER 834Z

MCB MUCHO DINERO 133A11

SF MISS ONSTAR 535A24

CSONKA OF BRINKS 30R4

MS BRINKS CHALLENGER 392M26

BR MIDLAND

SOUTHERN 1407 BLACKCAP 272M

BW	WW	YW	REA	IMF	FT										
68 lbs. (97%)	736 lbs. (109%)	811 lbs. (103%)	8.26 (91%)	2.78 (105%)	0.06 (83%)										
CED	BW	WW	YW	M	TM	CEM	SC	REA	IMF	FT	Hfr Prq	Stay	Cow Wt	TI	FI
4.6	1.4	38	76	12	31	3.7	0.67	0.34	0.2	-0.035	2.73	1.08	1.58	3.45	1.14

Her donor dam is a corner stone in our herd who has 10 natural calves with a 359-day calving interval and milks big weaning ratios year in and year out. She writes nine EPD traits ranking in the breed's top 25% or greater paced by top 10% WW, YW and Terminal Index, top 15% IMF and top 25% Milk.

**Breeding:** Al'd 2/10/21 to TJM Main Event 59C10, R10292783. Pasture exposed to MCB Beacon 535H5, R10442124 and MCB Relax 919H2, UB10442129 from 3/14/21 to 7/25/21. Checked safe to AI. ECD: 11/19/21.

# 17 MS WW FOUNDATION 675C

Born: 4/3/15 R10298153 Gen: 5 PHN: 675C Spring Bred Cow Addison Brangus Farms

SUHN'S FOUNDATION 331Z28  
R10227112

GR SWIFT 209W3

SUHN'S MISS BT 331S43

CB HOMBRE 541T3

MS BRINKS CLIPPER 675R24

LAMBERT OF BRINKS 317R3

MS BRINKS BRIGHT SIDE 209L11

BURTIN'S TRANSFORMER 803G3

SUHN'S MS CADENCE 331M3

SUHN'S AFFIRMED 416N4

MS BRINKS BRIGHT SIDE 541K28

CLIPPER OF BRINKS 541L20

MISS BRINKS NEWSDAY 675H4

MS WW HOMBRE 675Y  
R10199965

BRANGUS  
GE-EPDS

BW	WW	YW	REA	IMF	FT										
81 lbs. (101%)	685 lbs. (108%)	925 lbs. (103%)	9.65 (91%)	4.56 (103%)	0.14 (72%)										
CED	BW	WW	YW	M	TM	CEM	SC	REA	IMF	FT	Hfr Prq	Stay	Cow Wt	TI	FI
6.1	1.6	28	48	9	23	4.7	0.62	0.25	-0.05	-0.042	0.66	1.21	-0.41	1.85	-0.06

She is a powerful Foundation daughter. She records top 25% CED with top 30% WW and SC. We chose to AI her to one of the hottest bulls in Brangus, Empire.

**Breeding:** Al'd 5/13/21 to DMR Empire 795D12, R10323531. Pasture exposed to ABF Blackstone 23G2, R10410461 from 5/23/21 to 7/22/21.



MS WW FOUNDATION 675C

# 18 MS SALACOA CSONKA 99D25

Born: 9/17/16 R10339912 Gen: 5 PHN: 99D25 Spring Bred Cow T3 Brangus

CSONKA OF BRINKS 30R4  
R10004209

LEAD GUN OF BRINKS 222K14

MISS BRINKS UPPERCUT 30L18

CADENCE OF BRINKS

MISS BRINKS BIG EASY 99E3

CADENCE OF BRINKS

MISS BB NEW BIG EASY 222E55

UPPERCUT OF BRINKS 14J8

MISS BRINKS SUNDANCE 30J32

HUB OF BRINKS 39Z2

MISS BB NEW TYSON 535B15

BIG EASY OF BRINKS 283Z

MISS BB NEW HOTLINE 99A3

MS SVF CADENCE 99Y8  
R10195250

BRANGUS  
GE-EPDS

BW	WW	YW	REA	IMF	FT										
84 lbs. (106%)	675 lbs. (125%)	960 lbs. (116%)	11.91 (117%)	5.02 (128%)	0.37 (163%)										
CED	BW	WW	YW	M	TM	CEM	SC	REA	IMF	FT	Hfr Prq	Stay	Cow Wt	TI	FI
4.5	2.6	41	79	16	36	3.5	0.64	0.75	0.21	-0.033	2.49	-1.72	-4.34	3.76	0.43

She is an own daughter of the immortal Csonka. She writes powerful EPD values ranking in the breed's top 2% REA, 4% WW and YW, 10% Milk, 15% IMF and top 4% Terminal Index. A full brother sold for \$5,000 at Salacoa and her maternal sibs have totaled over \$41,000 in revenue. DDF

**Breeding:** Al'd 5/15/21 to QVF PR Empower 30G16, R10412716. Pasture exposed to RBC Bet Me 406F6, R10380541 from 5/18/21 to 8/18/21.

# 19 RBC MS HOLLYWOOD 406E

Born: 3/5/17 R10347001 Gen: 5 PHN: 406E Spring Bred Cow T3 Brangus

HOLLYWOOD OF SALACOA 23A53  
R10251840

NEW VISION OF SALACOA 209Y2

MS SVF PATTON 23Y66

CSONKA OF BRINKS 30R4

OAKS MS LARGENT 406W

LAMBERT OF BRINKS 317R3

MS BRINKS BRIGHT SIDE 209L11

PATTON OF BRINKS 30T22

SVF MS 23M28

LEAD GUN OF BRINKS 222K14

MISS BRINKS UPPERCUT 30L18

LARGENT OF BRINKS 784R17

MS BRINKS BEST BET 406T11

OAKS MS CSONKA 406B1  
R10261187

BW	WW	YW	REA	IMF	FT										
78 lbs. (98%)	702 lbs. (111%)	999 lbs. (114%)	12.5 (106%)	3.78 (101%)	0.35 (98%)										
CED	BW	WW	YW	M	TM	CEM	SC	REA	IMF	FT	Hfr Prq	Stay	Cow Wt	TI	FI
8.1	-0.3	33	71	-1	16	5.1	0.75	0.72	0.14	-0.046	1.86	-0.58	-10.43	3.39	0.69

She is a powerful Hollywood daughter who records 11 EPD traits ranking in the breed's top 35% or greater led by top 3% REA, 5% CED, 25% BW, 10% Terminal Index and YW and top 20% IMF and WW. Her dam is a Csonka daughter, 406B1.

**Breeding:** Al'd 5/15/21 to BWCC Big Lake 111F4, R10399796. Pasture exposed to RBC Bet Me 406F6, R10380541 from 5/18/21 to 8/18/21.



ELC MS PASSPORT 535D24

## 20 ELC MS PASSPORT 535D24

Born: 9/25/16 R10329914 Gen: 5 PHN: 535D24 Spring Bred Cow EC Brangus

CB PASSPORT 803Y11  
R10216038

CB HOMBRE 541T3

MS BRINKS LAMBERT 803T6

CLVR MISS COCO 535W2  
R10161075

SVF MR 4457

SVF MS 171P4 535S60

SUHN'S AFFIRMED 416N4  
MS BRINKS BRIGHT SIDE 541K28  
LAMBERT OF BRINKS 317R3  
MS BRINKS SUNDANCE 803P8  
CADENCE OF BRINKS  
MISS HD SP ADDITION 44H20  
SVF MR 171P4  
SVF MS 535K35

BW	WW	YW	REA	IMF	FT										
68 lbs. (91%)	532 lbs. (95%)	843 lbs. (98%)	7.81 (93%)	4.32 (124%)	0.11 (88%)										
CED	BW	WW	YW	M	TM	CEM	SC	REA	IMF	FT	Hfr Prg	Stay	CowWt	TI	FI
6.6	0.2	23	43	3	15	3.7	0.61	0.15	0.14	-0.046	0.95	0.59	4.58	2.07	0.12

She is a daughter of Passport and has produced three heifers in a row for us by Three D and Beacon. She has done us a good job. She is a lighter birth weight female ranking in the breed's top 20% CED, 35% BW and top 20% IMF.

**Breeding:** AI'd 3/12/21 to DMR JRT Dynamic 30G36, R10434661. Pasture exposed to ELC Mr Brickhouse 406G21, R10420455 from 4/18/21 to 7/5/21. Confirmed bred.

## 21 B2K MS THREE D 541D2

Born: 12/6/16 R10375183 Gen: 5 PHN: 541D2 Spring Bred Cow T3 Brangus

TJM THREE D 302A  
R10244716

CB FINAL CUT 924X

OAKS MS PATTON 302X3

B2K MISS CSONKA 541B  
R10273824

CSONKA OF BRINKS 30R4

MS BRINKS UPPERCUT 541P133

MC REVELATION 129T

RBM MS GUNS 924T3

PATTON OF BRINKS 30T22

MISS BRINKS GERONIMO 302H6

LEAD GUN OF BRINKS 222K14

MISS BRINKS UPPERCUT 30L18

UPPERCUT OF BRINKS 14J8

MISS BRINKS LINEMAN 541G5

BW	WW	YW	REA	IMF	FT										
74 lbs. (100%)	500 lbs. (100%)	753 lbs. (100%)													
CED	BW	WW	YW	M	TM	CEM	SC	REA	IMF	FT	Hfr Prg	Stay	CowWt	TI	FI
2	2.6	36	69	-1	17	3.4	0.77	0.45	0.04	-0.049	2.26	0.11	5.69	2.77	-0.17

She is a deep sided daughter of 3D and her dam is sired by Csonka. She boasts top 10% WW and YW, 25% REA EPDs and top 20% Terminal Index. She was AI'd to Big Town, one of the hottest proven bulls in the breed. **CAPC**

**Breeding:** AI'd 5/15/21 to BWCC Big Town 192B16, R10266676. Pasture exposed to RBC Bet Me 406F6, R10380541 from 5/18/21 to 8/18/21.



ABF MS BLACK GRANITE 27H2

## 22 ABF MS BLACK GRANITE 23H5

Born: 3/18/20 R10444838 Gen: 2 PHN: 23H5 Spring Bred Heifer Addison Brangus Farms

ABF BLACK GRANITE 23D5  
R10333005

MC GRANITE 834B

SVF MS 535P9 23S104

SVF MS CADENCE 23S69  
R10078220

CADENCE OF BRINKS

SVF MS 23M28

MC BOULDER 889Z14

MC MS 778 TRAVELER 834Z

BUENO OF SALACOA 535P9

SVF MS 23P57

HUB OF BRINKS 392Z

MISS BB NEW TYSON 535B15

NEW ERA OF BRINKS 541J37

SALACOA PINE LASS 23D2

BW	WW	YW	REA	IMF	FT										
62 lbs. (88%)	670 lbs. (113%)	981 lbs. (103%)	12.85 (116%)	5.25 (112%)	0.51 (109%)										
CED	BW	WW	YW	M	TM	CEM	SC	REA	IMF	FT	Hfr Prg	Stay	CowWt	TI	FI
8	-2.1	31	65	13	28	4.3	0.44	0.71	0.11	-0.038	2.39	1.16	4.6	3.38	1.37

She is a long sided, super complete daughter of ABF Black Granite. She boasts 12 EPD traits ranking in the breed's top 30% led by top 3% BW, 5% CED, 3% REA, 10% Terminal Index, 15% YW and Fertility index and top 25% WW and Milk. Rarely do you see this much spread, birth to yearling. **CAPC**

**Breeding:** AI'd 5/13/21 to DMR Empire 795D12, R10323531. Pasture exposed to ABF Black Granite 134H, R10444830 from 5/28/21 to 9/1/21.

## 23 ABF MS BLACK GRANITE 27H2

Born: 2/29/20 R10444842 Gen: 2 PHN: 27H2 Spring Bred Heifer Addison Brangus Farms

ABF BLACK GRANITE 23D5  
R10333005

MC GRANITE 834B

SVF MS 535P9 23S104

SVF MS 607N2 27S  
R10071347

SVF MR 607N2

MS 38 CENTER RANCH 27/N23

MC BOULDER 889Z14

MC MS 778 TRAVELER 834Z

BUENO OF SALACOA 535P9

SVF MS 23P57

GOOD FORTUNE OF BRINKS 14H3

MISS BRINKS KO 607J35

BRIGHT SIDE OF BRINKS 789G5

CR MS CADENCE 27G3

BW	WW	YW	REA	IMF	FT										
73 lbs. (103%)	747 lbs. (125%)	1018 lbs. (107%)	11.08 (100%)	4.16 (89%)	0.4 (86%)										
CED	BW	WW	YW	M	TM	CEM	SC	REA	IMF	FT	Hfr Prg	Stay	CowWt	TI	FI
4.3	2.2	40	78	12	32	2.8	0.48	0.38	-0.03	-0.034	1.29	0.6	4.46	3.02	0.6

She is a big powerful daughter of ABF Black Granite. She projects top 5% of the breed WW and YW EPDs with top 15% Terminal Index, 25% milk and top 35% REA. We purchased her dam from Salacoa Valley and she has raised 12 calves in a row for us with an average WR of 102.5. **CAPC**

**Breeding:** AI'd 5/13/21 to DMR Cash Flow 535F30, UB10386538. Pasture exposed to ABF Black Granite 134H, R10444830 from 5/28/21 to 9/1/21.

# 24 ABF MS BLACK GRANITE 134H3

Born: 4/7/20 R10444832 Gen: 2 PHN: 134H3 Spring Bred Heifer Addison Brangus Farms

ABF BLACK GRANITE 23D5  
R10333005

MS SVF CADENCE 134Y3  
R10189646

MC GRANITE 834B  
SVF MS 535P9 23S104

SR CADENCE WARRIOR S702  
SVF 44S6 134 W239

MC BOULDER 889Z14  
MC MS 778 TRAVELER 834Z  
BUENO OF SALACOA 535P9  
SVF MS 23P57  
CADENCE OF BRINKS  
TRR'S MS SOUTHERN PINE 594F1  
SVF MR 44S6  
SVF MS 134S

BW	WW	YW	REA	IMF	FT										
71 lbs. (100%)	507 lbs. (85%)	884 lbs. (93%)	9.37 (85%)	4.69 (100%)	0.47 (100%)										
CED	BW	WW	YW	M	TM	CEM	SC	REA	IMF	FT	Hfr Prq	Stay	CowWt	TI	FI
6.7	-1.9	20	47	13	23	3.8	0.67	0.15	0.07	-0.026	2.15	1.17	-7.58	2.29	1.74

She is a Black Granite daughter and a calving ease dream with top 5% BW and 15% CED. She totals nine EPD traits ranking in the breed's top 35% including top 10% Fertility Index and top 25% Milk. Her dam posts a 369-day calving interval on eight. **CAPC**

**Breeding:** AI'd 5/13/21 to Suhn's TTT LM Signal 30E13, UB10353471. Pasture exposed to ABF Black Granite 134H, R10444830 from 5/28/21 to 9/1/21.



ABF MS BLACK GRANITE 134H4

# 25 VF MS BIG COUNTRY 000H48

Born: 2/17/20 R10443498 Gen: 1 PHN: 000H48 Spring Bred Heifer Vanna Farms

BWCC BIG COUNTRY 158F14  
UB10399800

MC MS QUIET LADY 000S50  
R10070018

BWCC CROSS FIT 541B28  
BWCC MS REWARD 158C10

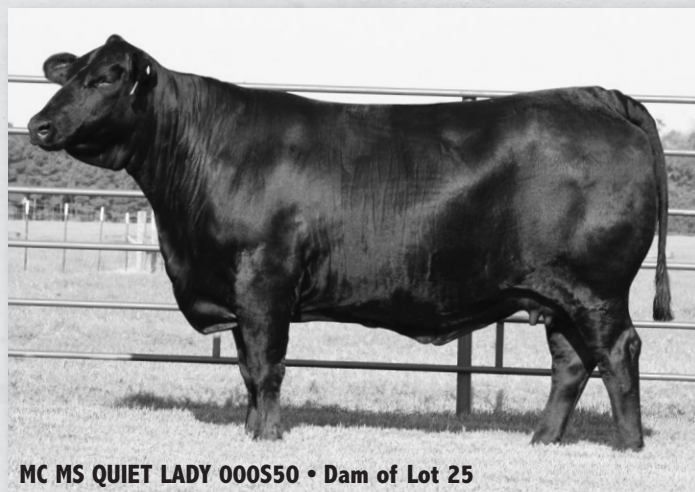
MC JOHN WAYNE 661N13  
MC MS FOREFRONT 000N2

MC CROSSOVER 834Y  
MC MS LUCIA 541U  
S A V REWARD 3198  
BWCC MS JETHRO 158W  
TJM JOHN WAYNE 44L  
LER MS. NEW STAR 661F7  
CONNEALY FOREFRONT  
MC MS 189/4-000J2

BW	WW	YW	REA	IMF	FT										
72 lbs. (100%)	542 lbs. (100%)	738 lbs. (100%)	8.89 (100%)	4.15 (100%)	0.12 (100%)										
CED	BW	WW	YW	M	TM	CEM	SC	REA	IMF	FT	Hfr Prq	Stay	CowWt	TI	FI
3.8	3.4	39	67	7	27	3.3	0.62	0.52	0.27	-0.031	1.93	1.93	1.29	3.17	1.09

She is again from the powerful 000 tribe and a maternal sister to the dam of our exciting young donor, 000D3, the dam of the Broadway heifers we are also offering. She is sired by the exciting young BWCC Big Country herd sire. Her power is evident and confirmed through her tabulations writing nine EPD traits ranking in the breed's top 10% or greater led by top 1% WW, 2% YW, 3% Terminal Index, 3% REA, 4% IMF and top 10% Fertility Index. We chose to AI her to the red hot Big Town herd sire and she is cleaned up with our exciting new addition, Black Top.

**Breeding:** AI'd 2/16/21 to BWCC Big Town 192B16, R10266676. Pasture exposed to BWCC Black Top 192G22, R10444674 from 2/26/21 to 7/20/21.



MC MS QUIET LADY 000S50 • Dam of Lot 25

# 26 HF MS CROSSFIT 10H2

Born: 2/20/20 UB10444203 Gen: 2 PHN: 10H2 Spring Bred Heifer Haynes Farms

BWCC CROSS FIT 541B28  
R10293331

BWCC MS RESOURCE 10A16  
UB10251877

MC CROSSOVER 834Y  
MC MS LUCIA 541U

S A V RESOURCE 1441  
BWCC MS NUFF SAID 10X

LAMBERT OF BRINKS 317R3  
MC MS GUNS 834W3  
LUKE OF BRINKS 784P14  
MC MS QUIET LADY 541S2  
RITO 707 OF IDEAL 3407 707S  
S A V BLACKCAP MAY 4136  
MC NUFF SAID 889T50  
MS IRON FARM 301J5-10N3

BW	WW	YW	REA	IMF	FT										
77 lbs. (100%)															
CED	BW	WW	YW	M	TM	CEM	SC	REA	IMF	FT	Hfr Prq	Stay	CowWt	TI	FI
4.8	2.8	53	97	4	30	3.1	1.52	0.62	0.36	-0.038	2.6	1.14	-3.07	4.54	1.39

She is a powerful Cross Fit daughter with a world of depth and top. She posts EPDs ranking in the breed's top 15% for nine EPD traits including top 1% WW, YW, SC and Terminal Index, 3% IMF, 10% REA and top 15% Fertility Index.

**Breeding:** AI'd 3/20/21 to BWCC Center Section 7F7, UB10411375. Pasture exposed to BWCC Resource 535C, UB10316286 from 4/22/21 to 7/22/21.

# 27 HF MS PROFIT 10H3

Born: 3/23/20 UB10444174 Gen: 3 PHN: 10H3 Spring Bred Heifer Haynes Farms

BWCC PROFIT 10E  
UB10374547

HF MS STATEMENT 10C  
UB10288868

MC PROFIT 924B16  
BWCC MS RESOURCE 10A16  
BWCC STATEMENT 036Z  
BWCC MS RESOURCE 10A16

MC CROSSOVER 834Y  
RBM MS JETHRO 924U2  
S A V RESOURCE 1441  
BWCC MS NUFF SAID 10X  
MC REDEMPTION 192W22  
MS IRON FARM 2K4 036U  
S A V RESOURCE 1441  
BWCC MS NUFF SAID 10X

BW	WW	YW	REA	IMF	FT										
75 lbs. (103%)															
CED	BW	WW	YW	M	TM	CEM	SC	REA	IMF	FT	Hfr Prq	Stay	CowWt	TI	FI
3.7	3.3	47	87	7	31	2.8	1.13	0.7	0.22	-0.028	3.43	1.58	-1.44	3.9	2.14

This Profit granddaughter writes 10 EPD traits ranking in the breed's top 25% led by top 2% WW and YW, 3% Terminal and Fertility Index, 4% REA and top 10% IMF. We chose to AI her to Center Section.

**Breeding:** AI'd 3/20/21 to BWCC Center Section 7F7, UB10411375. Pasture exposed to BWCC Resource 535C, UB10316286 from 4/22/21 to 7/22/21.



JRT MS ELDORADO 23H4

## 28 JRT MS ELDORADO 23H4

Born: 2/7/20 R10441689 Gen: 6 PHN: 23H4 Spring Bred Heifer JRT Brangus

DMR ELDORADO 30B15  
R10284830

MS SALACOA PATTON 23Y67  
R10204849

BRANGUS  
GE-EPDS

TJM CORONADO 535X

SUHN'S MISS PATTON 30X6

PATTON OF BRINKS 30T22

SVF MS 23M28

CB HOMBRE 541T3  
MS BRINKS LAMBERT 535T4  
PATTON OF BRINKS 30T22  
SUHN'S MS DUKE 30M  
CONKA OF BRINKS 30R4  
MS BRINKS ALI 30P26  
NEW ERA OF BRINKS 541J37  
SALACOA PINE LASS 23D2

BW	WW	YW	REA	IMF	FT										
74 lbs. (100%)	493 lbs. (100%)	803 lbs. (100%)	9.23 (100%)	3.39 (100%)	0.13 (100%)										
CED	BW	WW	YW	M	TM	CEM	SC	REA	IMF	FT	Hfr Prg	Stay	Cow Wt	TI	FI
4.6	1	39	74	-3	17	3.7	0.98	0.57	0.22	-0.049	1.58	-0.06	-5.46	3.49	0.27

These three daughters are a tribute to the power of our 23Y67 donor, a full sister to the \$30,000 dam of Hollywood. Six offspring of 23Y67 have averaged over \$6,000 at auction at Salacoa. She is sired by our senior herd sire, Eldorado. She records top 10% WW, YW, REA, IMF and Terminal Index. **Breeding:** AI'd 4/22/21 to DMR JRT Dynamic 30G36, R10434661. Pasture exposed to DMR JRT Dynamic 30G36, R10434661 from 5/1/21 to 7/18/21.



JRT MS NEVER SURRENDER 23H5

## 29 JRT MS NEVER SURRENDER 23H5

Born: 2/11/20 R10441691 Gen: 4 PHN: 23H5 Spring Bred Heifer JRT Brangus

NEVER SURRENDER OF SALACOA 803D9  
R10318183

MS SALACOA PATTON 23Y67  
R10204849

MC BOULDER 889Z14

MS BRINKS LOMBARDI 803S25

PATTON OF BRINKS 30T22

SVF MS 23M28

MC SOMETHING SPECIAL 129W14  
MC MS EXTRAVAGANT 889X4  
LOMBARDI OF BRINKS 468N10  
MISS BRINKS KO 803J  
CONKA OF BRINKS 30R4  
MS BRINKS ALI 30P26  
NEW ERA OF BRINKS 541J37  
SALACOA PINE LASS 23D2

BW	WW	YW	REA	IMF	FT										
76 lbs. (100%)	502 lbs. (100%)	801 lbs. (100%)	10.46 (100%)	2.66 (100%)	0.2 (100%)										
CED	BW	WW	YW	M	TM	CEM	SC	REA	IMF	FT	Hfr Prg	Stay	Cow Wt	TI	FI
2.2	4.7	55	106	5	33	3.3	0.87	0.89	0.16	-0.039	2.34	0.67	-0.3	4.46	0.81

This Never Surrender daughter is a power cow! She is a daughter of our 23Y67 donor and ranks in the breed's top 1% for WW, YW, REA and Terminal Index, and top 20% IMF and 35% Fertility Index. Maternal sibs have averaged over \$6,000 and we don't think they sold one this good.

**Breeding:** AI'd 4/22/21 to DMR JRT Dynamic 30G36, R10434661. Pasture exposed to DMR JRT Dynamic 30G36, R10434661 from 5/1/21 to 7/18/21.



JRT MS CAPITAL GAIN 23H7

## 30 JRT MS CAPITAL GAIN 23H7

Born: 2/23/20 R10441693 Gen: 6 PHN: 23H7 Spring Bred Heifer JRT Brangus

CB CAPITAL GAIN 924D19  
R10339273

MS SALACOA PATTON 23Y67  
R10204849

BRANGUS  
GE-EPDS

TJM THREE D 302A

CB MS HOMBRE 924Z11

PATTON OF BRINKS 30T22

SVF MS 23M28

CB FINAL CUT 924X  
OAKS MS PATTON 302X3  
CB HOMBRE 541T3  
RBM MS GUNS 924T3  
CONKA OF BRINKS 30R4  
MS BRINKS ALI 30P26  
NEW ERA OF BRINKS 541J37  
SALACOA PINE LASS 23D2

BW	WW	YW	REA	IMF	FT										
86 lbs. (108%)	638 lbs. (103%)	854 lbs. (98%)	9.98 (99%)	3.07 (83%)	0.17 (64%)										
CED	BW	WW	YW	M	TM	CEM	SC	REA	IMF	FT	Hfr Prg	Stay	Cow Wt	TI	FI
3	2.1	40	71	-1	19	3.5	0.53	0.43	0.08	-0.054	1.97	0.46	1.99	2.95	-0.03

CB Capital Gain is out of the dam of Final Cut. He stamps this female with a world of rib and power. She records eight EPD traits ranking in the breed's top 35% or greater. Her dam is the full sister to the \$30,000, dam of Hollywood.

**Breeding:** AI'd 4/22/21 to DMR JRT Dynamic 30G36, R10434661. Pasture exposed to DMR JRT Dynamic 30G36, R10434661 from 5/1/21 to 7/18/21.



# 31 VF MS CRUISE 44H

Born: 4/29/20 R10438532 Gen: 5 PHN: 44H Spring Bred Heifer **Harness Brangus**

BWCC CRUISE 323D3  
UB10349309

BWCC CRUISE 889Z28  
BWCC MS ROCK SOLID 323B

MC ELEGIDO 924W6  
BWCC MS LEAD GUN 889W26  
S A V ROCK SOLID 2251  
BWCC MS ROCK STAR 323X2  
MC NUFF SAID 889T50  
BWC MS LEAD GUN 129T8  
MC JOHN WAYNE 661N13  
MC MS NEWS MAN 44P3

VF MS TUFF ENUFF 44B  
R10279660

TUFF ENUFF 129X11  
MC MS 661 JOHN WAYNE 44S

BW	WW	YW	REA	IMF	FT										
71 lbs. (98%)	704 lbs. (109%)	898 lbs. (110%)	11.7 (104%)	3.19 (82%)	0.43 (90%)										
CED	BW	WW	YW	M	TM	CEM	SC	REA	IMF	FT	Hfr Prg	Stay	CowWt	TI	FI
4.9	2.3	39	80	11	30	2.8	0.06	0.46	0.05	-0.039	3.24	1.35	1.17	3.3	1.47

She is a Cruise daughter. Her dam is a Nuff Said granddaughter by Tuff Enuff. She is powerful in her tabulations with nine EPD traits ranking in the breed's top 35% or greater led by top 4% YW and Heifer Pregnancy, 10% WW and Terminal Index and top 15% Fertility Index. Al'd to Big Town and pasture exposed to Black Top!

**Breeding:** Al'd 2/16/21 to BWCC Big Town 192B16, R10266676. Pasture exposed to BWCC Black Top 192G22, R10444674 from 2/26/21 to 7/20/21.



**BWCC CRUISE 323D3 • Sire of Lots 12, 31**

# 32 JF MS. TN SINATRA 99H1

Born: 5/15/20 R10468424 Gen: 7 PHN: 99H1 Spring Bred Heifer **Jackson Farms**

SALACOA HANNIBAL 332B25  
R10280020

HANNIBAL OF BRINKS 784T6  
TCB KIOWA PRINCESS U435

CSONKA OF BRINKS 30R4  
MS BRINKS GOOD FORTUNE 784N9  
SR CADENCE WARRIOR P456  
SR WARRIOR PRINCESS N332  
STONEWALL OF RRR 222W6  
MS SVF 23586 535X20  
MC ABRAMS 468T22  
MB MS COLEMAN 99X5

JF MS TN HONEY 99E  
R10390180

ROME OF SALACOA 535Z  
MB MS ABRAMS 99Z

BW	WW	YW	REA	IMF	FT										
54 lbs. (102%)	508 lbs. (100%)														
CED	BW	WW	YW	M	TM	CEM	SC	REA	IMF	FT	Hfr Prg	Stay	CowWt	TI	FI
7.2	-1	31	66	15	30	4.1	0.51	0.62	0.1	-0.035	2.37	-0.01	-9.1	3.25	1.34

She is sired by our Hannibal son out of a maternal sister to R532. Her dam is by Rome. She writes an incredible 13 EPD traits ranking in the breed's top 30% or greater including top 10% CED, REA and Terminal Index, 15% BW, YW and Fertility Index with top 25% WW. **CAPC DDPC**

**Breeding:** Al'd 6/14/21 to DMR JRT Dynamic 30G36, R10434661. Pasture exposed to JRT Empire 624H, R10441687 from 6/26/21 to sale day.



# 33 JF MS. TN FIRE 99H2

Born: 5/15/20 R10468425 Gen: 7 PHN: 99H2 Spring Bred Heifer **Jackson Farms**

SALACOA HANNIBAL 332B25  
R10280020

HANNIBAL OF BRINKS 784T6  
TCB KIOWA PRINCESS U435

CSONKA OF BRINKS 30R4  
MS BRINKS GOOD FORTUNE 784N9  
SR CADENCE WARRIOR P456  
SR WARRIOR PRINCESS N332  
STONEWALL OF RRR 222W6  
MS SVF 23586 535X20  
MC ABRAMS 468T22  
MB MS COLEMAN 99X5

JF MS TN HONEY 99E  
R10390180

ROME OF SALACOA 535Z  
MB MS ABRAMS 99Z

BW	WW	YW	REA	IMF	FT										
52 lbs. (98%)	523 lbs. (100%)														
CED	BW	WW	YW	M	TM	CEM	SC	REA	IMF	FT	Hfr Prg	Stay	CowWt	TI	FI
7.2	-1	31	66	15	30	4.1	0.51	0.62	0.1	-0.035	2.37	-0.01	-9.1	3.25	1.34

She is a twin to 99H1 and projects the same incredible EPD profile. We chose to AI them to the good Empire son DMR JRT Dynamic and cleaned them up with another Empire son. We think this combination will work. **CAPC DDPC**

**Breeding:** Al'd 6/14/21 to DMR JRT Dynamic 30G36, R10434661. Pasture exposed to JRT Empire 624H, R10441687 from 6/26/21 to sale day.



**JF MS. TN FIRE 99H2**



L&W MS FINAL ANSWER UB 200H

## 34 L&W MS FINAL ANSWER UB 200H

Born: 1/18/20 UB10447665 Gen: 2 PHN: 200H Spring Bred Heifer L&W Cattle Co.

CRC FINAL ANSWER 392C25  
UB10294783

RYR MS LEAD DEAL 200A2  
R10252462

S A V FINAL ANSWER 0035

MISS CRC GOOD FORTUNE 3925

SOUTHERN DEAL MAKER 468W40

PB MS LEAD TYSON 200U1

SITZ TRAVELER 8180  
S A V EMULOUS 8145  
GOOD FORTUNE OF BRINKS 14H3  
MISS BRINKS TROOPER 392F53  
MC REAL DEAL 541R3  
MS BRINKS BS 607L11 468S78  
MR LEAD N JOHN WAYNE 21R3  
PB MS TYSON KO ZOOM

BW	WW	YW	REA	IMF	FT													
70 lbs. (95%)	585 lbs. (108%)	604 lbs. (99%)	9.63 (104%)	4.43 (126%)	0.25 (124%)													
CE	D	BW	WW	YW	M	TM	CEM	SC	REA	IMF	FT	Hfr	Prg	Stay	Cow	Wt	TI	FI
6.5	-0.3	32	69	8	24	3.4	0.4	0.61	0.23	-0.028	2.2	0.44	0.86	3.47	0.79			

This good UB2 Final Answer bred female writes 10 EPD traits ranking in the breed's top 35% or greater led by top 10% Terminal Index, REA and IMF, 15% YW, 20% WW and CED and top 25% BW with top 35% Fertility Index. We look forward to hearing about her Dynamic calf when it arrives.

**Breeding:** AI'd on 5/29/21 to DMR JRT Dynamic 30G36, R10434661. Pasture exposed to L&W Mr Final Answer UB 914H, UB 10447664 from 6/15/21 to 8/5/21. Safe to AI date. ECD 3/1/22.



TANNER MS PARAGON 240H2

## 35 TANNER MS PARAGON 240H2

Born: 2/5/20 R10455658 Gen: 6 PHN: 240H2 Spring Bred Heifer Tanner Farms

TC PARAGON 30D4  
R10336252

TANNER MS BRINKS GRIESE 240C2  
R10311981

TJM THREE D 302A

TC MS NEW VISION 30A3

CCR INTEGRITY 3555A

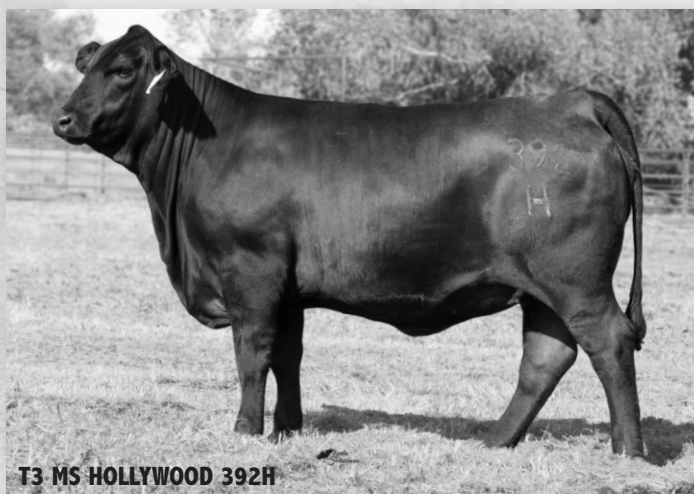
TANNER MS BRINKS GRIESE 240A

CB FINAL CUT 924X  
OAKS MS PATTON 302X3  
NEW VISION OF SALACOA 209Y2  
TC MS NIMITZ 30X  
CCR INTEGRITY 5281M  
CCR MS INVESTMENT 355M4  
CCC INTREPID  
MS BRINKS GRIESE 240T76

BW	WW	YW	REA	IMF	FT													
55 lbs. (69%)	676 lbs. (100%)	813 lbs. (100%)	10.48 (100%)	4.44 (100%)	0.32 (100%)													
CE	D	BW	WW	YW	M	TM	CEM	SC	REA	IMF	FT	Hfr	Prg	Stay	Cow	Wt	TI	FI
10	-2.9	19	35	9	19	4.8	0.19	0.42	0.07	-0.053	1.05	0.32	-7.93	2.11	0.16			

She is a birthweight and calving ease queen with a lot of carcass punch. She is sired by Paragon, perhaps the thickest made Three D son. She records top 1% CED, 2% BW, 30% REA and top 35% IMF. In addition, she is +9 on Milk. If you like them thick and ready to breed to the power bulls, she will be a dream to mate in the future.

**Breeding:** AI'd 4/29/21 to DMR El Dorado 30B15, R10284830. Pasture exposed to DS Mr Hollywood 535G, R10419881 from 5/4/21 to 5/28/21 and to Tanner Foreman 8962, AAA19527056 from 5/28 to 7/8/21. Palpated safe.



T3 MS HOLLYWOOD 392H

## 36 T3 MS HOLLYWOOD 392H

Born: 2/19/20 R10439725 Gen: 8 PHN: 392H Spring Bred Heifer T3 Brangus

HOLLYWOOD OF SALACOA 23A53  
R10251840

T3 MS SHARPE 392F  
R10385889

NEW VISION OF SALACOA 209Y2

MS SVF PATTON 23Y66

CLVR SHARPE 99B7

T3 MS STONEWALL 392D3

LAMBERT OF BRINKS 317R3  
MS BRINKS BRIGHT SIDE 209L11  
PATTON OF BRINKS 30T22  
SVF MS 23M28  
NEW VISION OF SALACOA 209Y2  
101 MS PATTON 99X9  
STONEWALL OF RRR 222W6  
MS SVF LTD 392Y22

BW	WW	YW	REA	IMF	FT													
81 lbs. (107%)	609 lbs. (99%)	826 lbs. (99%)	10.39 (99%)	4.49 (103%)	0.16 (85%)													
CE	D	BW	WW	YW	M	TM	CEM	SC	REA	IMF	FT	Hfr	Prg	Stay	Cow	Wt	TI	FI
3.4	1.1	30	54	-4	11	3.1	0.67	0.54	0.18	-0.046	1.15	-0.58	-20.02	2.62	1.01			

She is a 3/4 sister to 820H we are also selling. Her dam, by Sharpe, calved her at 21 months of age and weaned her at 609 pounds. Her dam is out of a Stonewall daughter out of the \$30,000, 392Y22 donor. 392H boasts nine EPD traits ranking in the breed's top 30% or greater with big growth, carcass, indexes and near breed average BW.

**Breeding:** AI'd 5/13/21 to BWCC Big Town 192B16, R10266676. Pasture exposed to Salacoa Atlanta 23G89, R10437490 from 5/21/21 to 8/5/21.

# 37 QVF MS N SURRENDER 150G6

Born: 10/19/19 R10427023 Gen: 4 PHN: 150G6 Spring Bred Heifer Quail Valley Farms

NEVER SURRENDER OF SALACOA 803D9  
R10318183

MC BOULDER 889Z14  
MS BRINKS LOMBARDI 803S25

MC SOMETHING SPECIAL 129W14  
MC MS EXTRAVAGANT 889X4  
LOMBARDI OF BRINKS 468N10  
MISS BRINKS KO 803J  
MR CR FRED 99/N26  
SVF-D BAR D MS ALICE  
SOUTH GATES' MVP 157E22  
TVR MS ALPHA 150F2

DD MS NANCY 150U8  
R10115234

BRANGUS  
GE-EPDS

SKYHAWKS PRESIDENTE  
GTB MS NAOMI 150J

BW	WW	YW	REA	IMF	FT										
83 lbs. (100%)	476 lbs. (100%)	747 lbs. (100%)	8.71 (100%)	4.25 (100%)	0.17 (100%)										
CED	BW	WW	YW	M	TM	CEM	SC	REA	IMF	FT	Hfr Prq	Stay	CowWt	TI	FI
5.1	1.1	33	59	8	24	4.1	0.76	0.59	0.08	-0.036	1.80	1.17	-1.90	2.73	0.85

She is sired by Never Surrender and her dam is the great 150U8 donor we purchased from Doguet's for \$10,000. Brothers to 150G6 have totaled \$21,000 and 150G sold to Watkins for \$7,500. 150G6 writes EPDs ranking in the breed's top 35% or greater for 9 traits including top 10% REA, 20% WW and Terminal Index, 25% YW and top 35% Fertility Index and does it all with only 1.1 pounds of BW. **Breeding:** AI'd 3/1/21 to BWCC Big Town 192B16, R10266676. Pasture exposed to By Design of Salacoa 406F10. UB10396325 and to DMR Entrepreneur 795G26. UB10434707 from 3/2/21 to 5/21/21. Palpated safe.

# 40 HF MS HOTSHOT 487G3

Born: 11/20/19 R10444060 Gen: 2 PHN: 487G3 Spring Bred Heifer Haynes Farms

BWCC HOT SHOT 192D31  
UB10349294

BWCC SLICK 7B  
BWCC MS STATEMENT 192B48

S A V CHILL FACTOR 1418  
BWCC MS FLIGHT DECK 7Z  
BWCC STATEMENT 036Z  
BWCC MS ELEGIDO 192Z50  
BWCC CRUISE 889Z28  
BWCC MS BRAND NAME 192Z46  
MC NUFF SAID 889T50  
MISS 4C LEAD GUN 487P

HF MS MOTORHEAD 487E4  
R10374545

BWCC MOTORHEAD 192B44  
BWCC MS NUFF SAID 487Y9

BW	WW	YW	REA	IMF	FT										
76 lbs. (104%)	526 lbs. (84%)														
CED	BW	WW	YW	M	TM	CEM	SC	REA	IMF	FT	Hfr Prq	Stay	CowWt	TI	FI
5.9	1.3	38	79	6	25	2.5	0.66	0.63	0.24	-0.022	3.25	1.31	1.77	3.7	1.8

Hot Shot and McQueen are two of the most popular and proven sires in the Blackwater program. This Hot Shot daughter records 11 EPD traits ranking in the breed's top 25% or greater including top 4% YW and Terminal Index and top 10% WW, REA, IMF and Fertility Index with top 25% CED. **Breeding:** AI'd 3/20/21 to BWCC McQueen 192E24, UB10359871. Pasture exposed to BWCC Resource 535C, UB10316286 from 4/22/21 to 7/22/21.

# 41 HF MS MILE MARKER 487H

Born: 1/1/20 R10444156 Gen: 2 PHN: 487H Spring Bred Heifer Haynes Farms

BWCC MILE MARKER 889E32  
R10359796

BWCC CROSS FIT 541B28  
BWCC MS NUFF SAID 889Z24

MC CROSSOVER 834Y  
MC MS LUCIA 541U  
MC NUFF SAID 889T50  
MC MS 5175 BANDO 889P12  
BWCC CRUISE 889Z28  
BWCC MS BRAND NAME 192Z46  
MC NUFF SAID 889T50  
MISS 4C LEAD GUN 487P

HF MS MOTORHEAD 487F1  
R10393965

BWCC MOTORHEAD 192B44  
BWCC MS NUFF SAID 487Y9

BW	WW	YW	REA	IMF	FT										
77 lbs. (105%)															
CED	BW	WW	YW	M	TM	CEM	SC	REA	IMF	FT	Hfr Prq	Stay	CowWt	TI	FI
4.6	1.9	38	71	9	29	2.6	0.49	0.5	0.27	-0.028	3.01	1.17	-2.22	3.42	1.78

She is a Mile Marker daughter and posts EPD ranking in the breed's top 5% WW, 10% YW, IMF, Terminal and Fertility Indexes. We AI'd her to the powerful McQueen and exposed her to our good Resource son, 535C. **Breeding:** AI'd 3/20/21 to BWCC McQueen 192E24, UB10359871. Pasture exposed to BWCC Resource 535C, UB10316286 from 4/22/21 to 7/22/21.

# 42 HF MS RESOURCE 487H2

Born: 2/26/20 UB10444168 Gen: 1 PHN: 487H2 Spring Bred Heifer Haynes Farms

S A V RESOURCE 1441  
EA17016597

RITO 707 OF IDEAL 3407 7075  
S A V BLACKCAP MAY 4136

R R RITO 707  
IDEAL 3407 OF 1418 076  
S A V 8180 TRAVELER 004  
S A V MAY 2397  
LAMBERT OF BRINKS 317R3  
MC MS GUNS 834W3  
MC NUFF SAID 889T50  
MISS 4C LEAD GUN 487P

HF MS CROSSOVER 487A  
R10237138

MC CROSSOVER 834Y  
BWCC MS NUFF SAID 487Y9

BW	WW	YW	REA	IMF	FT										
78 lbs. (107%)															
CED	BW	WW	YW	M	TM	CEM	SC	REA	IMF	FT	Hfr Prq	Stay	CowWt	TI	FI
2.7	2.9	48	89	4	28	3.1	0.87	0.69	0.27	-0.03	3.46	1.62	-1.08	4.04	2.08

She is a 3/4 sister to the following lot and both are way good. Her dam is a Crossover daughter. She writes EPDs ranking in the breed's top 25% for 10 EPD traits led by top 1% WW, 2% YW and Terminal Index, 3% Fertility Index, 4% REA and top 10% IMF. She is safe to McQueen, the big growth Cross Fit son. **DDPC** **Breeding:** AI'd 3/20/21 to BWCC McQueen 192E24, UB10359871. Safe.

# 43 HF MS RESOURCE 487H4

Born: 3/23/20 UB10444177 Gen: 2 PHN: 487H4 Spring Bred Heifer Haynes Farms

BWCC RESOURCE 535C  
UB10316286

S A V RESOURCE 1441  
HF MISS LEAD GUN 535U

RITO 707 OF IDEAL 3407 7075  
S A V BLACKCAP MAY 4136  
BRINKS LEAD GUN 415P44  
SVF MS 535M9  
MC ELEGIDO 924W6  
MC MS STRYKER 1420U6  
MC NUFF SAID 889T50  
MISS 4C LEAD GUN 487P

HF MS BOUNCER 487B8  
R10282270

MC BOUNCER 1420Z4  
BWCC MS NUFF SAID 487Y9

BW	WW	YW	REA	IMF	FT										
80 lbs. (109%)															
CED	BW	WW	YW	M	TM	CEM	SC	REA	IMF	FT	Hfr Prq	Stay	CowWt	TI	FI
2.9	3.1	39	77	12	32	2.9	0.74	0.71	0.22	-0.022	3.44	1.68	3.25	3.58	1.93

She is way good and way powerful. She is sired by our good Resource son and out of a Bouncer daughter. She records 11 EPD traits ranking in the breed's top 25% led by top 3% REA, 4% Fertility Index and top 10% WW, YW, IMF and Terminal Index, all with top 20% Milk. **CAPC DDPC** **Breeding:** AI'd 3/20/21 to BWCC McQueen 192E24, UB10359871. Pasture exposed to BWCC Resource 535C, UB10316286 from 4/22/21 to 7/22/21.

# 44 HF MS RESOURCE 535H

Born: 3/16/20 UB10444172 Gen: 2 PHN: 535H Spring Bred Heifer Haynes Farms

BWCC RESOURCE 535C  
UB10316286

S A V RESOURCE 1441  
HF MISS LEAD GUN 535U

RITO 707 OF IDEAL 3407 7075  
S A V BLACKCAP MAY 4136  
BRINKS LEAD GUN 415P44  
SVF MS 535M9  
MC JETHRO 00S3  
MC MS 004 TRAVELER 129T9  
BRINKS LEAD GUN 415P44  
HF MISS BIG TIME

HF MS BODINE 535Z  
R10213193

MC BODINE 129W15  
HF MISS LEAD GUN 535W

BW	WW	YW	REA	IMF	FT										
70 lbs. (96%)															
CED	BW	WW	YW	M	TM	CEM	SC	REA	IMF	FT	Hfr Prq	Stay	CowWt	TI	FI
5.9	0.6	34	68	9	26	3.4	0.78	0.43	0.13	-0.024	2.56	1.81	-2.33	3.08	1.86

She is another Resource granddaughter and her dam is by Bodine. She also projects 11 EPD traits ranking in the breed's top 30% or greater including top 1% Fertility Index, 15% WW, YW and Terminal Index, top 25% IMF and top 30% CED and REA. She is safe to McQueen, the good Cross Fit son ranking top 1% for growth and Terminal Index. **CAPC DDPC** **Breeding:** AI'd 3/20/21 to BWCC McQueen 192E24, UB10359871. Safe.



**ERC MS STRATEGY 541H**

## 45 ERC MS STRATEGY TORCH 541H

Born: 4/12/20 R10436000 Gen: 6 PHN: 541H Spring Bred Heifer East Ridge Cattle

TORCH OF SALACOA 803E10  
R10368005

DMR STRATEGY 263C6

MS SALACOA HOLLYWOOD 803C9

SPUR S MS THREE D 541F2  
R10389213

TJM THREE D 302A

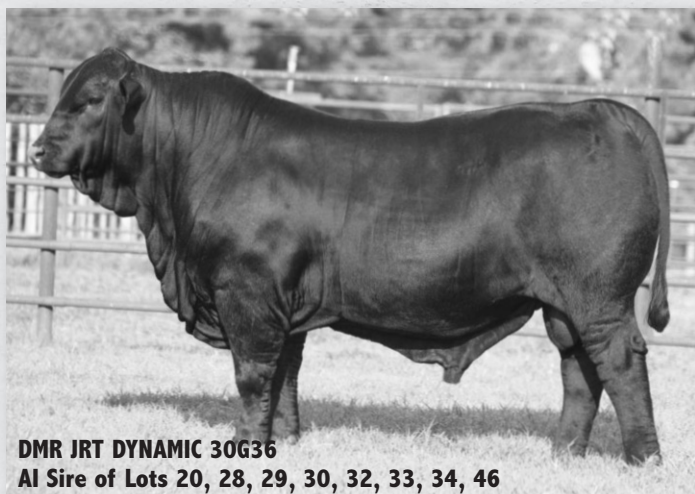
T3 MS CSONKA 541B21

TJM CORONADO 535X  
MS CRC CSONKA 263U  
HOLLYWOOD OF SALACOA 23A53  
MS BRINKS LOMBARDI 803S25  
CB FINAL CUT 924X  
OAKS MS PATTON 302X3  
CSONKA OF BRINKS 30R4  
MS BRINKS TRANSFORMER 541M40

BW	WW	YW	REA	IMF	FT										
70 lbs. (97%)	516 lbs. (100%)														
CED	BW	WW	YW	M	TM	CEM	SC	REA	IMF	FT	Hfr Prg	Stay	Cow Wt	TI	FI
6.4	0.6	36	67	4	22	4.1	0.81	0.51	0.1	-0.047	1.88	0.14	-2.61	3.04	0.33

This powerful Strategy granddaughter combines growth, carcass and calving ease while writing 10 EPD traits ranking in the breed's top 35% or greater. She posts top 15% WW, YW, SC and Terminal Index with top 20% CED and REA. Her dam is a Three D daughter of the \$23,000, 541B21.

**Breeding:** AI'd 6/14/21 to BWCC Big Town 192B16, R10266676. Pasture exposed to LM Xerox 468G5, R10413181 from 6/26/21 to 8/15/21.



**DMR JRT DYNAMIC 30G36**

AI Sire of Lots 20, 28, 29, 30, 32, 33, 34, 46

## 46 JF HH MS. TN EL DORADO 624H1

Born: 2/24/20 R10468427 Gen: 6 PHN: 624H1 Spring Bred Heifer Jackson Farms

DMR ELORADO 30B15  
R10284830

TJM CORONADO 535X

SUHN'S MISS PATTON 30X6

JRT MS ROME 624F  
R10378611

ROME OF SALACOA 535Z

QCB MS 624A-ET

CB HOMBRE 541T3  
MS BRINKS LAMBERT 535T4  
PATTON OF BRINKS 30T22  
SUHN'S MS DUKE 30M  
STONEWALL OF RRR 222W6  
MS SVF 23586 535X20  
QCB/WAT ESTANCIA 263X4  
BWCC MS REAL DEAL 624W

BW	WW	YW	REA	IMF	FT										
68 lbs. (100%)	431 lbs. (100%)														
CED	BW	WW	YW	M	TM	CEM	SC	REA	IMF	FT	Hfr Prg	Stay	Cow Wt	TI	FI
6.7	-0.7	30	56	4	19	4.2	0.83	0.42	0.17	-0.03	1.62	0.48	-9.88	2.8	1.26

She is an Eldorado daughter out of a Rome daughter. Her EPD profile indicates 11 traits ranking in the breed's top 30% or greater with big growth and carcass, light birth and calving ease and top 20% Terminal and Fertility Indexes.

**Breeding:** AI'd 6/14/21 to DMR JRT Dynamic 30G36, R10434661. Pasture exposed to JRT Empire 624H, R10441687 from 6/26/21 to sale day.



**MCB MS CSONKA 679G1**

## 47 MCB MS CSONKA 679G1

Born: 5/23/19 UB10429050 Gen: 2 PHN: 679G1 Fall Bred Heifer Magnolia Creek Brangus

MCB CSONKA 415D1  
R10327806

CSONKA OF BRINKS 30R4

MS BRINKS BRIGHT SIDE 415K6

MCB MS TEN SPEED 679E1  
UB10352065

S A V TEN SPEED 3022

GBF MS LAMBERT 679A

LEAD GUN OF BRINKS 222K14  
MISS BRINKS UPPER CUT 30L18  
BRIGHT SIDE OF BRINKS 789G5  
MISS BRINKS YAQUERO 415G  
A A R TEN X 7008 S A  
S A V MADAME PRIDE 1134  
LAMBERT OF BRINKS 317R3  
GBF MS COLE 535575 ROCK 922

BW	WW	YW	REA	IMF	FT										
86 lbs. (100%)	501 lbs. (100%)	825 lbs. (100%)													
CED	BW	WW	YW	M	TM	CEM	SC	REA	IMF	FT	Hfr Prg	Stay	Cow Wt	TI	FI
5.6	1.3	35	68	9	26	3.7	0.62	0.5	0.16	-0.041	2.41	0.07	-3.04	3.17	0.77

This UB2 female records an interesting combination of powerful, curve bending genetics. She records nine EPD traits ranking in the breed's top 35% or greater including top 15% WW, YW and Terminal Index and top 20% REA and IMF, with only a 1.3 birthweight EPD.

**Breeding:** Pasture exposed to MCB Stunner 468G8, UB10431020 from 1/20/21 to 6/19/21 and to MCB Relax 919H2, UB10442129 from 6/19/21 to 7/25/21. Checked safe to MCB Stunner 468G8. ECD: 11/25/21.

# 48 TANNER MS ATLANTA 760H2

Born: 2/19/20 UB10455671 Gen: 2 PHN: 760H2 Spring Bred Heifer Tanner Farms

ATLANTA OF SALACOA 488Z  
R10210625

CCC MS 760B OF 8E28  
UB10285026

LAMBERT OF BRINKS 317R3

MS SVF CADENCE 488X11

RITO 8E28 OF RITA STD3 BEXT0

CCC MS S SPECIAL 760Z

LEAD GUN OF BRINKS 222K14  
MS BRINKS GOOD FORTUNE 317M  
CADENCE OF BRINKS  
MS BRINKS LEAD TIME 488N  
C R A BEXTOR 87 5205 608  
RITA STD3 OF 7R11 INTEGRITY  
MC SOMETHING SPECIAL 129W14  
JAK MISS LARGENT 760U

BW	WW	YW	REA	IMF	FT										
88 lbs. (110%)	726 lbs. (118%)	891 lbs. (110%)	13.9 (125%)	5.79 (139%)	0.46 (143%)										
CED BW	WW	YW	M	TM	CEM	SC	REA	IMF	FT	Hfr Prg	Stay	Cow Wt	TI	FI	
2.7	1.8	44	80	8	31	3.7	0.49	0.98	0.45	-0.019	2.31	0.64	-13.15	4.36	2.23

It will do to study this Atlanta daughter and her nine EPD traits ranking in the breed's top 20%. Her combination of traits is unusual with top 1% REA, IMF and Terminal Index, 2% Fertility Index, 3% WW and top 4% YW. She is also +8 on Milk.

**Breeding:** AI'd 4/29/21 to BWCC Big Town 192B16, R10266676. Pasture exposed to DS Mr Hollywood 535G, R10419881 from 5/4/21 to 5/28/21 and to Tanner Foreman 8962, 19527056 from 5/28 to 7/8/21. Palpated safe.



TANNER MS ATLANTA 760H2

# 49 ELC MS GUARDIAN 781H20

Born: 1/1/20 R10430350 Gen: 7 PHN: 781H20 Spring Bred Heifer EC Brangus

ELC MR GUARDIAN 406E4  
R10361289

ELC MS GUARDIAN 781C4  
R10281480

CRC GUARDIAN 9U8U5

ELC MS REAL DEAL 406Z

CRC GUARDIAN 9U8U5

CJB MS 781Y

CSONKA OF BRINKS 30R4  
MISS 4L BEST BET 9U8P5  
MC REAL DEAL 541R3  
ELC MS LEAD GUN 406T2  
CSONKA OF BRINKS 30R4  
MISS 4L BEST BET 9U8P5  
GARRETT OF BRINKS 789P  
QCB MS 781W

BW	WW	YW	REA	IMF	FT										
58 lbs. (86%)	388 lbs. (102%)	668 lbs. (98%)	8.9 (95%)	4.82 (100%)	0.24 (98%)										
CED BW	WW	YW	M	TM	CEM	SC	REA	IMF	FT	Hfr Prg	Stay	Cow Wt	TI	FI	
5.3	1.4	32	61	6	22	3.9	1.18	0.35	0.09	-0.055	2.78	0.04	1.97	2.7	0.29

She is double bred to Guardian. She boasts top 20% WW and YW with top 3% SC, 25% Terminal Index and top 35% IMF. We chose to AI her to the good Empire son from JRT and DMR.

**Breeding:** AI'd 3/15/21 to DMR JRT Dynamic 30G36, R1043466. Pasture exposed to ELC Mr Brickhouse 406G21, R10420455 from 4/18/21 to 7/5/21. Confirmed bred.



ELC MS GUARDIAN 781H20

# 50 T3 MS HOLLYWOOD 820H

Born: 2/10/20 R10439740 Gen: 6 PHN: 820H Spring Bred Heifer T3 Brangus

HOLLYWOOD OF SALACOA 23A53  
R10251840

T3 MS SHARPE 820F  
R10378890

NEW VISION OF SALACOA 209Y2

MS SVF PATTON 23Y66

CLVR SHARPE 9987

T3 MS GREAT BASIN 820C2

LAMBERT OF BRINKS 317R3  
MS BRINKS BRIGHT SIDE 209L11  
PATTON OF BRINKS 30T22  
SVF MS 23M28  
NEW VISION OF SALACOA 209Y2  
101 MS PATTON 99X9  
MB GREAT BASIN 329Y5  
GBF MS ESTANCIA 820A

BW	WW	YW	REA	IMF	FT										
77 lbs. (102%)	661 lbs. (108%)	908 lbs. (108%)	10.66 (101%)	4.16 (95%)	0.23 (120%)										
CED BW	WW	YW	M	TM	CEM	SC	REA	IMF	FT	Hfr Prg	Stay	Cow Wt	TI	FI	
4.5	1.3	34	66	0	17	3.9	0.79	0.57	0.12	-0.032	1.37	-0.23	-17	2.96	1.36

Her dam is by Sharpe, a full brother to Marlboro and Treasure. She calved her at 23 months of age and weaned her at 661 pounds to ratio 108. This good Hollywood daughter boasts EPDs ranking in the breed's top 15% WW, YW, SC, REA, Terminal and Fertility Index and top 30% IMF. Calving to Big Town or the \$15,000, 23G89 should be equally pleasing.

**Breeding:** AI'd 5/13/21 to BWCC Big Town 192B16, R10266676. Pasture exposed to Salacoa Atlanta 23G89, R10437490 from 5/21/21 to 8/5/21.





**ABF BLACK GRANITE 23D5**  
Sire of Lots 22, 23, 24, 51, 54, 55, 59

## 51 ABF MS BLACK GRANITE 13H

Born: 12/19/20 R10458491 Gen: 2 PHN: 13H Open Heifer Addison Brangus Farms

ABF BLACK GRANITE 23D5  
R10333005

MC GRANITE 834B

SVF MS 535P9 23S104

TCB CATAWBA WARRIOR R532

TF MS 13N

MC BOULDER 889Z14  
MC MS 778 TRAVELER 834Z  
BUENO OF SALACOA 535P9  
SVF MS 23P57  
SR CADENCE WARRIOR H823  
SR WARRIOR PRINCESS N332  
SUCCESS OF CAMP COOLEY 55H  
SMR MISS RIGHT TIME 131D8

BW	WW	YW	REA	IMF	FT										
80 lbs. (111%)	684 lbs. (100%)														
CED	BW	WW	YW	M	TM	CEM	SC	REA	IMF	FT	Hfr Prg	Stay	Cow Wt	TI	FI
7.1	-1.1	34	72	17	34	3.6	0.64	0.54	0.02	-0.016	0.77	0.81	-8.73	3.24	1.11

Here is the Milk. She records top 5% of the breed for that trait. She records a total of 11 EPD traits ranking in the breed's top 30%. She posts top 10% YW and Terminal Index, 15% CED, BW, WW and REA with top 25% Fertility Index. Her dam posts 9 @ 106 WR.



**ABF MS FINAL CUT 134F4/23H10**

## 52 ABF MS FINAL CUT 134F4/23H10

Born: 9/19/20 R10458502 Gen: 4 PHN: 23H10 Open Heifer Addison Brangus Farms

ABF FINAL CUT 134F4  
R10403235

CB FINAL CUT 924X

ABF MS SLEEP EASY 134A2

MC SOMETHING SPECIAL 129W14

ABF MS CSONKA 740Z13 23B2

ABF MS SOMETHING SPECIAL 23F9  
R10403243

BRANGUS  
GE-EPDS

MC REVELATION 129T  
RBM MS GUNS 924T3  
CCR SLEEP EASY 1000U3  
SVF MS ELIXIR 134Y2  
MC JETHRO 00S3  
MC MS LEAD GUN 129T12  
QCB CSONKA 740Z13  
QCB MS NUFF SAID 23Z13

BW	WW	YW	REA	IMF	FT										
60 lbs. (83%)	678 lbs. (114%)	1079 lbs. (108%)	11.5 (101%)	5.84 (136%)	0.54 (133%)										
CED	BW	WW	YW	M	TM	CEM	SC	REA	IMF	FT	Hfr Prg	Stay	Cow Wt	TI	FI
4.3	1.3	44	86	11	33	3	0.61	0.56	0.15	-0.031	2.74	0.65	4.57	3.85	0.82

She is sired by our calving ease Final Cut son, arrived when her dam was 23 months of age and ratioed 114 WR. We put her dam in our donor program. Pretty impressive. She writes 10 EPD traits ranking in the breed's top 35% or greater led by top 2% YW, 3% WW and Terminal Index, 15% REA, 20% IMF and top 35% Milk and Fertility Index.

## 53 ABF MS EMPIRE 23H8

Born: 9/4/20 R10458499 Gen: 5 PHN: 23H8 Open Heifer Addison Brangus Farms

DMR EMPIRE 795D12  
R10323531

TJM THREE D 302A

MS DMR JETHRO 795Y2

DMR DEFENDER 594A20

QCB MS NUFF SAID 23Z14

ABF MS DEFENDER 23D  
R10318573

BRANGUS  
GE-EPDS

CB FINAL CUT 924X  
OAKS MS PATTON 302X3  
MC JETHRO 00S3  
MS BRINKS UPPERCUT 795R9  
CRC GUARDIAN 908U5  
WR MS DUKE 594S7  
MC NUFF SAID 889T50  
SVF MS LEADGUN 23S85

BW	WW	YW	REA	IMF	FT										
79 lbs. (110%)	718 lbs. (120%)	1095 lbs. (110%)	11.2 (107%)	4.73 (111%)	0.33 (80%)										
CED	BW	WW	YW	M	TM	CEM	SC	REA	IMF	FT	Hfr Prg	Stay	Cow Wt	TI	FI
3.9	2.7	45	74	4	27	4.1	0.77	0.61	0.04	-0.049	3.06	0.93	1.73	3.08	0.94

She is a big bodied Empire daughter who records 10 EPD traits ranking in the breed's top 30% led by top 2% WW, 10% YW and REA, 15% Terminal Index and top 30% Fertility Index.

## 54 ABF MS BLACK GRANITE 134H5

Born: 10/22/20 R10458490 Gen: 2 PHN: 134H5 Open Heifer Addison Brangus Farms

ABF BLACK GRANITE 23D5  
R10333005

MC GRANITE 834B

SVF MS 535P9 23S104

ON TASK OF SALACOA 23Y42

ABF MS SLEEP EASY 134A2

ABF MS ON TASK 134E5  
R10364279

BRANGUS  
GE-EPDS

MC BOULDER 889Z14  
MC MS 778 TRAVELER 834Z  
BUENO OF SALACOA 535P9  
SVF MS 23P57  
CADENCE OF BRINKS  
SVF MS 23M28  
CCR SLEEP EASY 1000U3  
SVF MS ELIXIR 134Y2

BW	WW	YW	REA	IMF	FT										
63 lbs. (88%)	634 lbs. (106%)	997 lbs. (100%)	11.90 (105%)	3.37 (79%)	0.47 (115%)										
CED	BW	WW	YW	M	TM	CEM	SC	REA	IMF	FT	Hfr Prg	Stay	Cow Wt	TI	FI
5.6	0.4	36	72	10	29	4.1	0.3	0.45	0.16	-0.035	1.94	1.07	-4.48	3.36	1.13

Here is another ABF Black Granite daughter and writes 10 EPD traits ranking in the breed's top 35% or greater paced by top 10% WW, YW and Terminal Index, 20% IMF and Fertility Index, 25% REA and 35% CED. Her dam posts 2 @ 103 and a 356-day calving interval.

# 55 ABF MS BLACK GRANITE 188H

Born: 11/9/20 R10458493 Gen: 2 PHN: 188H Open Heifer Addison Brangus Farms

ABF BLACK GRANITE 23D5  
R10333005

MC GRANITE 834B  
SVF MS 535P9 23S104

MC BOULDER 889Z14  
MC MS 778 TRAVELER 834Z  
BUENO OF SALACOA 535P9  
SVF MS 23P57  
CADENCE OF BRINKS  
SVF MS 23M28  
CONKA OF BRINKS 30R4  
QCB MS188R

ABF MS ON TASK 188E2  
R10364284



ON TASK OF SALACOA 23Y42  
QCB MS CONKA 188Y22

BW	WW	YW	REA	IMF	FT										
67 lbs. (93%)	571 lbs. (96%)														
CED	BW	WW	YW	M	TM	CEM	SC	REA	IMF	FT	Hfr Prg	Stay	CowWt	TI	FI
4.2	1.2	40	80	9	30	3.5	0.42	0.61	0.19	-0.022	2.41	0.93	-3.36	3.67	1.57

She is another powerful daughter of ABF Black Granite. She projects top 4% YW and Terminal Index with top 5% WW, 10% REA and Fertility Index. Her dam is an On Task daughter who records 2 @ 111 WR.

# 56 ABF MS STONEWALL 222H2

Born: 8/27/20 R10458497 Gen: 7 PHN: 222H2 Open Heifer Addison Brangus Farms

STONEWALL OF RRR 222W6  
R10150860

CONKA OF BRINKS 30R4  
MS BRINKS LOMBARDI 222S20

LEAD GUN OF BRINKS 222K14  
MISS BRINKS UPPERCUT 30L18  
LOMBARDI OF BRINKS 468N10  
MISS BRINKS PICASSO 222K  
PATTON OF BRINKS 30T22  
GBF MS BEST BET 44 85Z21  
S A V INTERNATIONAL 2020  
BWCC MS WELL SAID 222A

ABF MS SATIN 222E  
UB10346639



ABF SATIN 857B  
ABF MS INTERNATIONAL 222C

BW	WW	YW	REA	IMF	FT										
69 lbs. (96%)	558 lbs. (94%)	925 lbs. (93%)	10.2 (90%)	2.99 (70%)	0.47 (113%)										
CED	BW	WW	YW	M	TM	CEM	SC	REA	IMF	FT	Hfr Prg	Stay	CowWt	TI	FI
6.1	-0.2	28	50	9	23	3.5	0.9	0.53	0.16	-0.025	2.68	0.19	-11.32	2.61	2.01

She is a very feminine daughter of Stonewall and records 11 EPD traits ranking in the breed's top 35% or greater paced by top 4% Fertility Index, 25% Terminal Index and light birth. big growth and carcass. She is a granddaughter of 222C, who also sells.



ABF MS THREE D 468H5 • Lot 57

# 57 ABF MS THREE D 468H5

Born: 9/6/20 R10458492 Gen: 5 PHN: 468H5 Open Heifer Addison Brangus Farms

TJM THREE D 302A  
R10244716

CB FINAL CUT 924X  
OAKS MS PATTON 302X3

MC REVELATION 129T  
RBM MS GUNS 924T3  
PATTON OF BRINKS 30T22  
MISS BRINKS GERONIMO 302H6  
CONKA OF BRINKS 30R4  
MISS 4L BEST BET 908P5  
NEW ERA OF BRINKS 541J37  
MISS BRINKS CADENCE 468G15

MS DMR GUARDIAN 468C7  
R10296914



CRC GUARDIAN 908U5  
MS BRINKS NEW ERA 468P14

BW	WW	YW	REA	IMF	FT										
72 lbs. (100%)	629 lbs. (100%)	993 lbs. (100%)	11.5 (100%)	5.07 (100%)	0.34 (100%)										
CED	BW	WW	YW	M	TM	CEM	SC	REA	IMF	FT	Hfr Prg	Stay	CowWt	TI	FI
5.3	0.9	40	74	3	23	3.7	0.72	0.55	0.08	-0.047	2.65	0.94	8.53	3.24	0.21

ABF Ms Three D 468H5 is a Three D daughter out of our 468C7 donor. She is deep bodied and thick made. She projects top 5% WW, 10% YW and Terminal Index, 15% REA and top 35% IMF. She will be one everyone will like.

# 58 ABF MS HOLLYWOOD 535H

Born: 9/3/20 R10458508 Gen: 8 PHN: 535H Open Heifer Addison Brangus Farms

HOLLYWOOD OF SALACOA 23A53  
R10251840

NEW VISION OF SALACOA 209Y2  
MS SVF PATTON 23Y66

LAMBERT OF BRINKS 317R3  
MS BRINKS BRIGHT SIDE 209L11  
PATTON OF BRINKS 30T22  
SVF MS 23M28  
CONKA OF BRINKS 30R4  
MS BRINKS LOMBARDI 222S20  
AMERICUS OF SALACOA 468Y16  
MS SVF ELIXIR 535X14

MS SALACOA STONEWALL 535E34  
R10367551



STONEWALL OF RRR 222W6  
MS SALACOA AMERICUS 535C34

BW	WW	YW	REA	IMF	FT										
80 lbs. (111%)	700 lbs. (117%)	1086 lbs. (109%)	11.9 (104%)	3.80 (89%)	0.37 (90%)										
CED	BW	WW	YW	M	TM	CEM	SC	REA	IMF	FT	Hfr Prg	Stay	CowWt	TI	FI
4.1	1.6	40	76	2	22	3.7	0.5	0.73	0.08	-0.038	1.87	-0.21	-17.37	3.32	1.54

She is a beast. Deep bodied, big ribbed and thick ended. She is sired by Hollywood and out of a Stonewall daughter. She records top 3% REA, 5% WW, 10% YW, Terminal and Fertility Indexes and top 35% IMF EPDs. Her dam posts a 352 day calving interval and a 110 WR on 2.



ABF MS BLACK GRANITE 23H11

## 59 ABF MS BLACK GRANITE 23H11

Born: 10/11/20 R10458498 Gen: 2 PHN: 23H11 Open Heifer Addison Brangus Farms

ABF BLACK GRANITE 23D5  
R10333005

MC GRANITE 834B  
SVF MS 535P9 23S104

MC BOULDER 889Z14  
MC MS 778 TRAVELER 834Z  
BUENO OF SALACOA 535P9  
SVF MS 23P57  
CCR SLEEP EASY 150R  
PF MS LUCY 1000P  
CADENCE OF BRINKS  
SVF MS 23M28

ABF MS SLEEP EASY 23A1  
R10238879

BRANGUS  
GE-EPDS

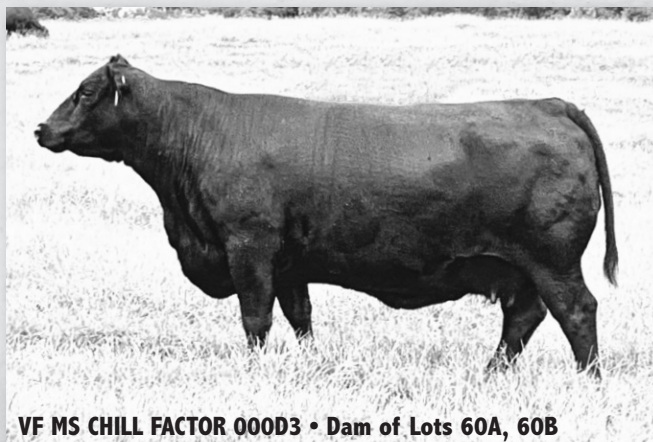
CCR SLEEP EASY 1000U3  
SVF MS CADENCE 23S69

BW	WW	YW	REA	IMF	FT										
70 lbs. (89%)	647 lbs. (91%)	996 lbs. (100%)	9.8 (100%)	4.36 (100%)	0.50 (100%)										
CED	BW	WW	YW	M	TM	CEM	SC	REA	IMF	FT	Hfr Prg	Stay	CowWt	TI	FI
6.7	-1.2	26	57	10	23	4.2	0.54	0.36	0.08	-0.032	1.76	0.88	-4.65	2.71	1.03

This ABF Black Granite daughter writes EPDs ranking in the breed's top 15% for CED and BW with top 30% YW, Terminal and Fertility Indexes and top 35% Milk.

## 60 A, B Choice of Open Heifers

These two donor prospects come from Vanna Farm's favorite 000 tribe that starts with the great granddam MC Ms Quiet Lady 000S50 that has done so much for the Brangus breed and Vanna Farms. These heifers are the first ever females offered out of Vanna Farm's favorite young donor VF Ms Chill Factor 000D3. These docile females are sired by one the hottest young herd sire in the breed, T3 Broadway 30E, that sold for \$67,550 at Salacoa Farms. Broadway is by the proven herd sire Hollywood and the hot 30 cow family Ms Salacoa Atlanta 30B5, the dam of the \$64,000, 30D donor. These heifers started out at 71 pounds and 74 pounds and are top 3% WW and 4% YW with four traits top 5% and eight traits top 15% in the breed! **Sell open and ready to breed this fall.** As an added bonus, their herd sire prospect brothers are selling at Salacoa Valley this fall.



VF MS CHILL FACTOR 000D3 • Dam of Lots 60A, 60B

## 60 A VF MS BROADWAY 000H28

Born: 9/2/20 UB10456880 Gen: 2 PHN: 000H28 Open Heifer Vanna Farms

T3 BROADWAY 30E  
R10367402

HOLLYWOOD OF SALACOA 23A53  
MS SALACOA ATLANTA 30B5

NEW VISION OF SALACOA 209Y2  
MS SVF PATTON 23Y66  
ATLANTA OF SALACOA 488Z  
MS BRINKS UNITAS 30T94  
RITO 707 OF IDEAL 3407 7075  
S A V BLACKCAP MAY 4136  
MC GAME CHANGER 127Y42  
MC MS QUIET LADY 000S50

VF MS CHILL FACTOR 000D3  
UB10322496

S A V CHILL FACTOR 1418  
VF MS GAME CHANGER 000B4

BW	WW	YW	REA	IMF	FT										
74 lbs. (100%)	565 lbs. (100%)														
CED	BW	WW	YW	M	TM	CEM	SC	REA	IMF	FT	Hfr Prg	Stay	CowWt	TI	FI
5	0.7	43	82	3	24	4.6	0.77	0.64	0.35	-0.032	2.35	0.95	-4.92	4.11	1.44

## 60 B VF MS BROADWAY 000H30

Born: 9/3/20 UB10456884 Gen: 2 PHN: 000H30 Open Heifer Vanna Farms

T3 BROADWAY 30E  
R10367402

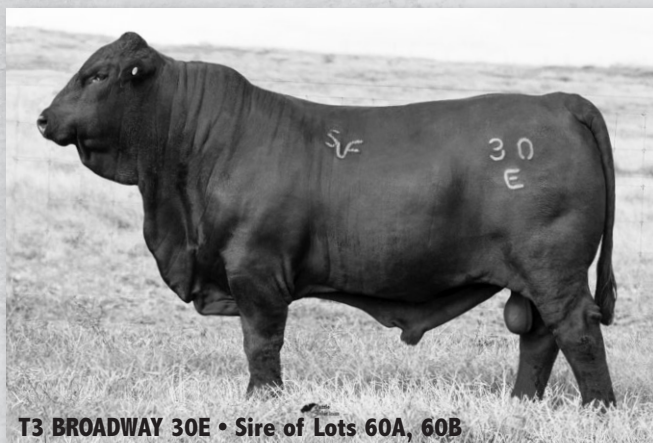
HOLLYWOOD OF SALACOA 23A53  
MS SALACOA ATLANTA 30B5

NEW VISION OF SALACOA 209Y2  
MS SVF PATTON 23Y66  
ATLANTA OF SALACOA 488Z  
MS BRINKS UNITAS 30T94  
RITO 707 OF IDEAL 3407 7075  
S A V BLACKCAP MAY 4136  
MC GAME CHANGER 127Y42  
MC MS QUIET LADY 000S50

VF MS CHILL FACTOR 000D3  
UB10322496

S A V CHILL FACTOR 1418  
VF MS GAME CHANGER 000B4

BW	WW	YW	REA	IMF	FT										
78 lbs. (100%)	640 lbs. (100%)														
CED	BW	WW	YW	M	TM	CEM	SC	REA	IMF	FT	Hfr Prg	Stay	CowWt	TI	FI
5	0.7	43	82	3	24	4.6	0.77	0.64	0.35	-0.032	2.35	0.95	-4.92	4.11	1.44



T3 BROADWAY 30E • Sire of Lots 60A, 60B



# 61

## TTT MS ORACLE 30H8

Born: 10/15/20 UB10461718 Gen: 2 PHN: 30H8 Open Heifer TTT Ranches, LLC

CB ORACLE 468F15  
R10384844

CB TRADITION 63A

CB MS LTD 468Y12

MYTTY IN FOCUS

SUHN'S MS DUKE 30M

CB HOMBRE 541T3

CB CADENCE 63R

LTD OF BRINKS 415Y28

MS BRINKS CADENCE 468P45

S A F FOCUS OF ER

MYTTY COUNTESS 906

WR DUKE 228/F

SUHN'S MS GERONIMO 30J5

SCC MISS MYTTY 30Z5  
UB10228005

BW	WW	YW	REA	IMF	FT										
70 lbs. (100%)	559 lbs. (100%)														
CED	BW	WW	YW	M	TM	CEM	SC	REA	IMF	FT	Hfr Prq	Stay	CowWt	TI	FI
6.1	-0.1	42	86	9	30	3.8	1.05	0.6	0.21	-0.01	2.06	1.13	-1.95	4	1.6

She is an Oracle daughter out of the \$40,000 donor dam of Beacon and Signal. She paints an impressive numerical tally with 11 EPD traits ranking in the breed's top 30% or greater led by to 3% YW and Terminal Index, 5% WW, 10% REA and Fertility Index all with top 25% CED and top 30% BW.



TTT MS ORACLE 30H8

# 62

## MS SALACOA N SURRENDER 99H24

Born: 10/4/20 R10460555 Gen: 4 PHN: 99H24 Open Heifer Salacoa Valley Farms

NEVER SURRENDER OF SALACOA 803D9  
R10318183

MC BOULDER 889Z14

MS BRINKS LOMBARDI 803S25

NEW VISION OF SALACOA 209Y2

SVF CADENCE 99 W063

MC SOMETHING SPECIAL 129W14

MC MS EXTRAVAGANT 889X4

LOMBARDI OF BRINKS 468N10

MISS BRINKS KO 803J

LAMBERT OF BRINKS 317R3

MS BRINKS BRIGHT SIDE 209L11

CADENCE OF BRINKS

SVF MS 99P6

MS SALACOA NEW VISION 99C2  
R10287976

BRANGUS  
GE-EPDS

BW	WW	YW	REA	IMF	FT										
93 lbs. (122%)	579 lbs. (112%)														
CED	BW	WW	YW	M	TM	CEM	SC	REA	IMF	FT	Hfr Prq	Stay	CowWt	TI	FI
3.9	2.5	42	79	10	31	4.2	0.54	0.64	0.14	-0.034	2.27	0.85	-10.86	3.51	1.76

Moderate and big ribbed in her kind, she is complete in her design with a world of length and bone. By Never Surrender, 10 maternal sibs to her dam, who sells this fall have averaged over \$5,700. She projects 11 EPD traits ranking in the breed's top 35% or greater paced by top 4% WW, 5% YW, 10% REA, Terminal and Fertility Index and top 25% IMF. If we retained her in our herd, no doubt we would flush her.



MS SALACOA N SURRENDER 99H24

# 63

## RBC MS BOCEPHUS 468E14 129H9

Born: 9/6/20 R10474228 Gen: 1 PHN: 129H9 Open Heifer Roadruck Brangus Cattle

BWCC BOCEPHUS 468E14  
UB10359939

BWCC BOCEPHUS 111C2

BWCC MS ROCK STAR 468Y14

ATLANTA OF SALACOA 488Z

MB MS CRUSADER 129D6

S A V REWARD 3198

BWCC MS RIGHTEOUS 111A10

MC ROCK STAR 924U6

MISS BRINKS CADENCE 468G15

LAMBERT OF BRINKS 317R3

MS SVF CADENCE 488X11

MB CRUSADER 17W9

MB MS INFOCUS 129X12

MB MS ATLANTA 129F7  
R10404991

BW	WW	YW	REA	IMF	FT										
87 lbs. (100%)	359 lbs. (100%)														
CED	BW	WW	YW	M	TM	CEM	SC	REA	IMF	FT	Hfr Prq	Stay	CowWt	TI	FI
5.7	0.4	44	80	7	29	3.3	0.74	0.73	0.29	-0.029	3.06	1.69	2.11	4.02	1.65

Her sire is a Bosephus son out of perhaps the best Rock Star daughter in the breed, 468Y14. Her dam is an Atlanta daughter going back to the Mytty In Focus flush X model donors. She writes incredible EPD combinations ranking in the breed's top 2% WW and Terminal Index, 3% REA, 4% YW, 5% IMF and top 10% Fertility Index, all with breed average BW. *DDPC*

# 64

## MS SALACOA ATLANTA 134H

Born: 9/19/20 R10461691 Gen: 5 PHN: 134H Open Heifer Salacoa Valley Farms

ATLANTA OF SALACOA 488Z  
R10210625

LAMBERT OF BRINKS 317R3

MS SVF CADENCE 488X11

BWCC BIG TOWN 192B16

MS SALACOA KAHN 134B

MS SALACOA BIG TOWN 134F2  
R10413006

BRANGUS  
GE-EPDS

LEAD GUN OF BRINKS 222K14

MS BRINKS GOOD FORTUNE 317M

CADENCE OF BRINKS

MS BRINKS LEAD TIME 488N

MC NUFF SAID 889T50

BWCC MS REVELATION 192W8

KHAN OF SALACOA 535Y22

MS SALACOA LEDOUX 134Y4

BW	WW	YW	REA	IMF	FT										
73 lbs. (100%)	487 lbs. (100%)														
CED	BW	WW	YW	M	TM	CEM	SC	REA	IMF	FT	Hfr Prq	Stay	CowWt	TI	FI
6.1	-0.5	29	54	11	26	4.1	0.54	0.55	0.15	-0.051	2.61	0.12	-14.7	2.85	1.61

If you can find a bigger, better and more blended EPD profile than this Atlanta daughter out of a Big Town daughter, own her no matter the cost. 134H projects an incredible 15 balanced and antagonistic traits ranking in the breed's top 35% or greater and she sells in this sale. Her dam calved her at 22 1/2 months of age.

# 65 A, B, C Choice of Open Heifers

This is an interesting and rare opportunity coming from the AV program. We are offering your choice of three full sisters from our weaned ET heifers. The Donor dam of the females was our pick from the 2019 BWCC sale, and a cow that we have work to multiple sires, with great success, producing several grade 1 embryos from each mating, all while staying within her calving season. Take note of her impressive EPD panel, top 1% for WW and YW, top 2% REA and HFR Preg, and top 4% FERT... hard to look past those numbers and not be impressed. These heifers are sired by BWCC Rawhide 924F42, the \$20,000 Cross Fit son, which now resides in Mexico. Rawhide caught lots of attention because of his massive depth, width, and rugged design. We couldn't decide on which heifer to bring, so we are letting you pick. Study them over; each female has a bold future ahead of them. As a bonus, all three heifers are halter broken by our nine-year-old son, they are super gentle. **Selling your choice of two of three, AV will retain the third female.**



BWCC RAWHIDE 924F42 • Sire of Lots 65A, 65B, 65C

## 65 A AV MS RAWHIDE 192J2

Born: 2/6/21 DNA10477728 Gen: 5 PHN: 192J2 Open Heifer AV Brangus

BW: 53 lbs. (100%)



AV MS RAWHIDE 192J2

## 65 Lot 65A, 65B, 65C

PEDIGREE AND PEDIGREE EPDs

BWCC RAWHIDE 924F42  
R10411179

BWCC CROSS FIT 541B28

RBM MS GUNS 924T3

S A V REAL MASSIVE 4879

BWCC MS MASSIVE 192D5  
UB10336195

BWCC MS GUNS DEE 192B8

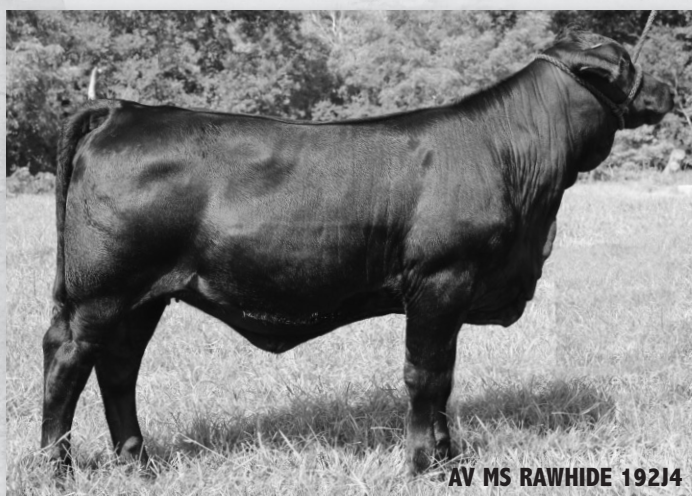
MC CROSSOVER 834Y  
MC MS LUCIA 541U  
MC GUNS DONOVAN 124R  
RBM MS 52 COOL HAND 924R  
S A V RESOURCE 1441  
S A V EMBLYNETTE 7545  
MC GUNS DONOVAN 124R  
BWCC MS REVELATION 192W8

CED	BW	WW	YW	M	TM	CEM	SC	REA	IMF	FT	Hfr	Prg	Stay	Cow Wt	TI	FI
4.9	1.4	48	89	4	28	2.6	0.85	0.67	0.20	-0.042	3.02	1.08	1.62	4.06	1.15	

## 65 B AV MS RAWHIDE 192J4

Born: 2/6/21 DNA10477730 Gen: 5 PHN: 192J4 Open Heifer AV Brangus

BW: 61 lbs. (100%)



AV MS RAWHIDE 192J4

## 65 C AV MS RAWHIDE 192J6

Born: 3/2/21 DNA10477732 Gen: 5 PHN: 192J6 Open Heifer AV Brangus

BW: 82 lbs. (100%)



AV MS RAWHIDE 192J6

# 66 MCB MS EMPIRE 302H

Born: 10/1/20 UB10474401 Gen: 1 PHN: 302H Open Heifer Magnolia Creek Brangus

DMR EMPIRE 795D12  
R10323531

MCB MS PRIME CUT 302F2  
UB10403819

TJM THREE D 302A

MS DMR JETHRO 795Y2

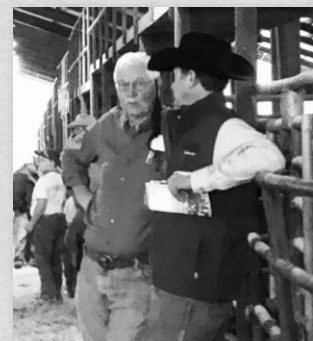
HA PRIME CUT 4493

MS SOUTHERN LAMBERT 302W13

CB FINAL CUT 924X  
OAKS MS PATTON 302X3  
MC JETHRO 0053  
MS BRINKS UPPERCUT 795R9  
VERMILION SIRLOIN  
HA MISS BLACKCAP 9127  
LAMBERT OF BRINKS 317R3  
MISS BRINKS GERONIMO 302H6

BW	WW	YW	REA	IMF	FT										
68 lbs. (87%)															
CED	BW	WW	YW	M	TM	CEM	SC	REA	IMF	FT	Hfr Prq	Stay	CowWt	TI	FI
5.9	-0.1	28	40	3	17	3.9	0.58	0.41	0.06	-0.038	2.2	0.99	-0.29	1.97	0.85

She is an Empire daughter with 9 EPD traits ranking in the breed's top 35% or greater. Her impressive tabulations include light BW, big growth, outstanding carcass and Fertility. Stemming from the great 302H6 donor on the bottom, her dam and grand dam are very fertile, easy fleshing, perfect uddered, and moderate framed..



# 67 SPUR S MS BIG TOWN 457H

Born: 9/29/20 R10468812 Gen: 4 PHN: 457H Open Heifer Spur S Cattle

BWCC Big Town 192B16  
R10266676

SPUR S MS NEVER SURRENDER 457F5  
R10400003

MC NUFF SAID 889T50

BWCC MS REVELATION 192W8

NEVER SURRENDER OF SALACOA 803D9

GBF MS X-MAN QUITE 457B

MC JOHN WAYNE 165N3  
MC MS EXTRAVAGANT 889P4  
MC REVELATION 129T  
MISS 4C LEAD GUN 192P4  
MC BOULDER 889Z14  
MS BRINKS LOMBARDI 803S25  
SVF MR WARRIOR 23X56  
CNF MISS SHADOW 457T2

BW	WW	YW	REA	IMF	FT										
70 lbs. (93%)	629 lbs. (105%)														
CED	BW	WW	YW	M	TM	CEM	SC	REA	IMF	FT	Hfr Prq	Stay	CowWt	TI	FI
5	1.2	38	69	15	34	3.4	0.81	0.66	0.17	-0.026	3.18	1.12	-0.68	3.35	1.8

She is a Big Town daughter out of a Never Surrender daughter, only the second daughter of a Never Surrender daughter we know of selling. We like her. She records 10 EPD traits ranking in the breed's top 20% led by top 5% REA, 10% WW, YW, Milk, Terminal and Fertility Index and top 20% IMF.



SPUR S MS BIG TOWN 457H

# 68 A, B Choice of Open Heifers

These two are first generation Brangus sired by T3 Broadway 30E and out of VF Ms Overload 487F. 487F was purchased at 2019 QV Sale at the side of her donor dam. We thought enough of her to do a virgin IVF flush that produced 23 embryos sired by Broadway. 6 of those embryos were sold in last year's Sale to Quail Valley for \$600 each. These two heifers are the first of these progeny to be offered and the cow will continue to be used in IVF. Maternal sister to 487F sold in this year's QV Sale for \$16,000. That heifer was lot # 166B- VF Ms Country Girl 487H18. These heifers offer some of the most current exciting genetic opportunities available in the breed. **Selling choice!**

## 68 A SA/ CJC MS BROADWAY 487H50

Born: 9/20/20 R10470959 Gen: 8 PHN: 487H50 Open Heifer CJC Farms/Sunshine Acres

T3 BROADWAY 30E  
R10367402

VF MS OVERLOAD 487F  
UB10407871

BRANGUS  
GE-EPDS

HOLLYWOOD OF SALACOA 23A53

MS SALACOA ATLANTA 30B5

BWCC OVERLOAD 403A

BWCC MS BOULDER 487B28

NEW VISION OF SALACOA 209Y2  
MS SVF PATTON 23Y66  
ATLANTA OF SALACOA 488Z  
MS BRINKS UNITAS 30T94  
S A V RESOURCE 1441  
BWCC MS ELEGIDO 403Y  
MC BOULDER 889Z14  
BWCC MS NUFF SAID 487Y9

BW	WW	YW	REA	IMF	FT										
83 lbs. (100%)	584 lbs. (100%)														
CED	BW	WW	YW	M	TM	CEM	SC	REA	IMF	FT	Hfr Prq	Stay	CowWt	TI	FI
4.6	0.6	37	73	6	25	3.6	0.92	0.62	0.19	-0.039	2.55	0.75	-7.96	3.49	1.57

## 68 B SA/ CJC MS BROADWAY 487H4

Born: 9/22/20 R10470960 Gen: 8 PHN: 487H4 Open Heifer CJC Farms/Sunshine Acres

T3 BROADWAY 30E  
R10367402

VF MS OVERLOAD 487F  
UB10407871

BRANGUS  
GE-EPDS

HOLLYWOOD OF SALACOA 23A53

MS SALACOA ATLANTA 30B5

BWCC OVERLOAD 403A

BWCC MS BOULDER 487B28

NEW VISION OF SALACOA 209Y2  
MS SVF PATTON 23Y66  
ATLANTA OF SALACOA 488Z  
MS BRINKS UNITAS 30T94  
S A V RESOURCE 1441  
BWCC MS ELEGIDO 403Y  
MC BOULDER 889Z14  
BWCC MS NUFF SAID 487Y9

BW	WW	YW	REA	IMF	FT										
70 lbs. (100%)	526 lbs. (100%)														
CED	BW	WW	YW	M	TM	CEM	SC	REA	IMF	FT	Hfr Prq	Stay	CowWt	TI	FI
4	1.3	38	75	6	25	3.2	0.92	0.6	0.21	-0.028	2.55	0.75	-7.96	3.5	1.82

# 69 SPUR S MS TORCH 541H12

Born: 10/22/20 R10468822 Gen: 7 PHN: 541H12 Open Heifer Spur S Cattle

TORCH OF SALACOA 803E10  
R10368005

CLVR MS NEW CONCEPT 541A1  
R10251501

DMR STRATEGY 263C6  
MS SALACOA HOLLYWOOD 803C9  
SUHN'S NEW CONCEPT 30Y24  
MS BRINKS UPPERCUT 541P33

TJM CORONADO 535X  
MS CRC CSONKA 263U  
HOLLYWOOD OF SALACOA 23A53  
MS BRINKS LOMBARDI 803S25  
BLANDA OF BRINKS 535R54  
SUHN'S MS DUKE 30M  
UPPERCUT OF BRINKS 14J8  
MISS BRINKS TROOPER 541H8

BW	WW	YW	REA	IMF	FT										
72 lbs. (96%)	572 lbs. (95%)														
CED	BW	WW	YW	M	TM	CEM	SC	REA	IMF	FT	Hfr Prg	Stay	CowWt	TI	FI
6.6	-0.3	31	60	5	20	3.4	1.01	0.55	0.03	-0.033	1.65	0.45	-9.09	2.71	1.15

Her sire is a Strategy son out of a maternal sib to Never Surrender. Her dam is out of a Brinks Uppercut daughter. 541H12 is balanced in her EPD profile with nine EPD traits ranking in the breed's top 25% or greater with super calving ease, birth, growth, carcass and top 25% Terminal and Fertility Index.

# 70 G&R MS BW MOSES 541H6

Born: 10/16/20 R10474174 Gen: 1 PHN: 541H6 Open Heifer G&R Brangus

BWCC MOSES 111D14  
UB10349447

OAKS MS CSONKA 541B3  
R10261209

MC BOULDER 889Z14  
BWCC MS ROCK SOLID 111B2  
CSONKA OF BRINKS 30R4  
OAKS MS UNITAS 541W6

MC SOMETHING SPECIAL 129W14  
MC MS EXTRAVAGANT 889X4  
S A V ROCK SOLID 2251  
MC MS STRYKER 111U25  
LEAD GUN OF BRINKS 222K14  
MISS BRINKS UPPERCUT 30L18  
UNITAS OF BRINKS 361R6  
OAKS MISS BEAR BRYANT 541S2

BW	WW	YW	REA	IMF	FT										
76 lbs. (100%)	528 lbs. (100%)														
CED	BW	WW	YW	M	TM	CEM	SC	REA	IMF	FT	Hfr Prg	Stay	CowWt	TI	FI
5	1.1	35	70	14	32	2.9	0.79	0.46	0.27	-0.025	2.67	0.86	3.88	3.49	1.05

She records 10 EPD traits ranking in the breed's top 25% or greater. She is sired by our good Boulder son, Moses. Her dam is a Csonka daughter. She writes top 10% YW, IMF and Terminal Index, 15% WW, Milk and SC and top 25% REA and Fertility Index.

# 71 A, B, C, D Choice of Open Heifers

We are continuing to build our herd. We wanted to consign our best to The Performance Sale but we do not wish to loose them all. We are selling your choice of three out of four of our "keeper" heifers. Your choices will be from a big bodied set of heifers with unique pedigrees. 487H6 is a Cash Flow out of our Boulder donor, 487B28. She projects top 2% WW and REA, 4% YW and Heifer Pregnancy with top 10% IMF. 487H7 is a maternal sister to H6 and is sired by Final Cut. She projects top 2% WW, REA and Heifer Pregnancy, 3% YW, 20% IMF, 25% CED and top 35% BW. Your choices will also include two full sisters sired by High Choice out of one of the best Atlanta daughters in the breed. Their dam is out of the \$70,000, 541T7 donor who is a daughter of the \$42,000, 541P103 donor. They paint EPD profiles projecting in the breed's top 15% WW, YW and REA, 20% IMF and top 25% CED. Phenotypically and genetically powerful, whatever your choices are it will be hard to be wrong. **Selling your choice of three out of four open heifers.**

## 71 A B2K MS CASH FLOW 487H6

Born: 8/20/20 UB10477842 Gen: 2 PHN: 487H6 Open Heifer BK2 Farm

DMR CASH FLOW 535F30  
UB10386538

BWCC MS BOULDER 487B28  
R10296459

S A V RESOURCE 1441  
MS DMR CORONADO 535A8  
MC BOULDER 889Z14  
BWCC MS NUFF SAID 487Y9

RITO 707 OF IDEAL 3407 7075  
S A V BLACKCAP MAY 4136  
TJM CORONADO 535X  
SVF MS 535M31  
MC SOMETHING SPECIAL 129W14  
MC MS EXTRAVAGANT 889X4  
MC NUFF SAID 889T50  
MISS 4C LEAD GUN 487P

BW	WW	YW	REA	IMF	FT										
78 lbs. (100%)	689 lbs. (100%)														
CED	BW	WW	YW	M	TM	CEM	SC	REA	IMF	FT	Hfr Prg	Stay	CowWt	TI	FI
5.2	1.5	51	90	7	33	3.2	0.44	0.78	0.23	-0.022	3.18	1.91	-0.98	4.2	2.2

## 71 B B2K MS FINAL CUT 487H7

Born: 8/27/20 R10477852 Gen: 4 PHN: 487H7 Open Heifer BK2 Farm

CB FINAL CUT 924X  
R10168212

BWCC MS BOULDER 487B28  
R10296459

MC REVELATION 129T  
RBM MS GUNS 924T3  
MC BOULDER 889Z14  
BWCC MS NUFF SAID 487Y9

MC NEW DIRECTION 000 M24  
MB MS NIMITZ 129R  
MC GUNS DONOVAN 124R  
RBM MS 52 COOL HAND 924R  
MC SOMETHING SPECIAL 129W14  
MC MS EXTRAVAGANT 889X4  
MC NUFF SAID 889T50  
MISS 4C LEAD GUN 487P

BW	WW	YW	REA	IMF	FT										
77 lbs. (100%)	588 lbs. (100%)														
CED	BW	WW	YW	M	TM	CEM	SC	REA	IMF	FT	Hfr Prg	Stay	CowWt	TI	FI
6.1	0	45	85	8	31	3.7	0.49	0.76	0.18	-0.032	3.45	1.65	13.14	4.02	0.94

## 71 C B2K MS HIGH CHOICE 541H59

Born: 8/24/20 R10477846 Gen: 6 PHN: 541H59 Open Heifer BK2 Farm

OAKS HIGH CHOICE 99A1  
R10235597

OAKS MS ATLANTA 541C54  
R10287162

GR SWIFT 209W3  
OAKS MS HOMBRE 99X9  
ATLANTA OF SALACOA 488Z  
OAKS MS CSONKA 541T7

LAMBERT OF BRINKS 317R3  
MS BRINKS BRIGHT SIDE 209L11  
CB HOMBRE 541T3  
MS BRINKS NEWT 99T113  
LAMBERT OF BRINKS 317R3  
MS SVF CADENCE 488X11  
CSONKA OF BRINKS 30R4  
MS BRINKS GD FORTUNE 541P103

BW	WW	YW	REA	IMF	FT										
80 lbs. (100%)	579 lbs. (100%)														
CED	BW	WW	YW	M	TM	CEM	SC	REA	IMF	FT	Hfr Prg	Stay	CowWt	TI	FI
6.3	0.6	33	69	9	26	3.6	0.74	0.53	0.17	-0.037	1.32	-0.32	-10.84	3.29	0.7

## 71 D B2K MS HIGH CHOICE 541H60

Born: 8/29/20 R10477848 Gen: 6 PHN: 541H60 Open Heifer BK2 Farm

OAKS HIGH CHOICE 99A1  
R10235597

OAKS MS ATLANTA 541C54  
R10287162

GR SWIFT 209W3  
OAKS MS HOMBRE 99X9  
ATLANTA OF SALACOA 488Z  
OAKS MS CSONKA 541T7

LAMBERT OF BRINKS 317R3  
MS BRINKS BRIGHT SIDE 209L11  
CB HOMBRE 541T3  
MS BRINKS NEWT 99T113  
LAMBERT OF BRINKS 317R3  
MS SVF CADENCE 488X11  
CSONKA OF BRINKS 30R4  
MS BRINKS GD FORTUNE 541P103

BW	WW	YW	REA	IMF	FT										
82 lbs. (100%)	649 lbs. (100%)														
CED	BW	WW	YW	M	TM	CEM	SC	REA	IMF	FT	Hfr Prg	Stay	CowWt	TI	FI
6.3	0.6	33	69	9	26	3.6	0.74	0.53	0.17	-0.037	1.32	-0.32	-10.84	3.29	0.7

# 72 JF 24H1

Born: 10/26/20 R10468405 Gen: 5 PHN: 24H Open Heifer Jackson Farms

SALACOA HANNIBAL 332B25  
R10280020

HANNIBAL OF BRINKS 784T6

TCB KIOWA PRINCESS U435

QCB/WAT ESTANCIA 263X4

BWCC MS JETHRO 24X3

CSONKA OF BRINKS 30R4  
MS BRINKS GOOD FORTUNE 784N9  
SR CADENCE WARRIOR P456  
SR WARRIOR PRINCESS N332  
BLANDA OF BRINKS 535R54  
MISS HD 314 263J2  
MC JETHRO 00S3  
MS BRINKS CADENCE 24R8

QCB MS 24A19-ET  
R10267460

BW	WW	YW	REA	IMF	FT										
72 lbs. (110%)	561 lbs. (107%)														
CED	BW	WW	YW	M	TM	CEM	SC	REA	IMF	FT	Hfr Prg	Stay	CowWt	TI	FI
5.9	0	28	58	16	30	3.8	0.56	0.44	0.05	-0.031	1.87	0.18	-9.98	2.69	1.26

All three of our open heifers are sired by our Hannibal son, 332B25 who is out of a maternal sib to R532. She writes 12 well balanced EPD traits ranking in the breed's top 35% or greater while checking all the boxes. Top 5% Milk, light BW and calving ease, big growth and carcass and big indexes.



# 73 JF 98H1

Born: 10/26/20 R10468421 Gen: 5 PHN: 98H1 Open Heifer Jackson Farms

SALACOA HANNIBAL 332B25  
R10280020

HANNIBAL OF BRINKS 784T6

TCB KIOWA PRINCESS U435

MC REAL DEAL 541R3

MISS BRINKS KO 98L17

CSONKA OF BRINKS 30R4  
MS BRINKS GOOD FORTUNE 784N9  
SR CADENCE WARRIOR P456  
SR WARRIOR PRINCESS N332  
TJM JOHN WAYNE 44L  
MB MS FREIGHT LINER 541K  
KO OF BRINKS 392F10  
MS BRINKS EASY STREET 98E24

CJF MS REAL DEAL 98Z  
R10223991

BW	WW	YW	REA	IMF	FT										
60 lbs. (92%)	618 lbs. (118%)														
CED	BW	WW	YW	M	TM	CEM	SC	REA	IMF	FT	Hfr Prg	Stay	CowWt	TI	FI
8	-0.6	32	69	13	29	4.2	0.63	0.56	-0.02	-0.04	1.73	-0.36	-0.75	3.05	0.04

She is deep sided and long bodied and sired by 332B25. Her dam is a Real Deal daughter. She projects top 10% CED, 15% YW, REA and Terminal Index with top 20% BW, WW and Milk.



JF 98H1

# 74 JF 793H1

Born: 10/10/20 R10468420 Gen: 4 PHN: 793H1 Open Heifer Jackson Farms

SALACOA HANNIBAL 332B25  
R10280020

HANNIBAL OF BRINKS 784T6

TCB KIOWA PRINCESS U435

MC NUFF SAID 889T50

CJF MS SINGLETARY 793X3

CSONKA OF BRINKS 30R4  
MS BRINKS GOOD FORTUNE 784N9  
SR CADENCE WARRIOR P456  
SR WARRIOR PRINCESS N332  
MC JOHN WAYNE 165N3  
MC MS EXTRAVAGANT 889P4  
SINGLETARY OF BRINKS 675R  
SVF MS 793K40

CJF MS NUFF SAID 793Z3  
R10224000

BW	WW	YW	REA	IMF	FT										
64 lbs. (98%)	585 lbs. (112%)														
CED	BW	WW	YW	M	TM	CEM	SC	REA	IMF	FT	Hfr Prg	Stay	CowWt	TI	FI
6.7	0.3	32	69	14	30	4.1	0.47	0.54	0.06	-0.039	2.67	0.16	-6.15	3.15	1.25

She is powerful and big ribbed. Her dam is a Nuff Said daughter. She projects 11 EPD traits ranking in the breed's top 30% or greater paced by top 15% CED, YW, Milk, REA, Heifer Pregnancy and Terminal Index with top 20% WW and Fertility Index. Her dam posts six with a 366-day calving interval.



JF 793H1

# 75 A, B, C Embryo Lot From Addison Brangus Farms

**Lot 75A • 1 package of 4 Embryos**  
**Lot 75B • 1 package of 4 Embryos**

**803D9 X 468C7**

Our donor dam, **468C7**, has 19 progeny on the ground working in our herd as well as QVF, JRT, BCC and PRB and you can put her to work in your herd through these embryos. She is an impressive blend of EPDs ranking in the breed's top 5% REA and SC, 15% Terminal Index, 20% CED, YW and IMF with top 25% WW and below breed average BW. We chose to flush her to the \$50,000 **Never Surrender**, one of the most powerful proven sires in the breed. He records top 1% WW and YW, 3% REA and Terminal Index, 10% Fertility Index, 20% Milk and SC and top 30% IMF. His progeny sales have totaled over \$798,584 and averaging over \$5,000. Pretty easy decision to own these embryos.

## 75 MS DMR GUARDIAN 468C7

Born: 2/12/15 R10296914 Gen: 5 PHN: 468C7 Embryo Lot

CRC GUARDIAN 9U8U5  
R10122023

CSONKA OF BRINKS 30R4

MISS 4L BEST BET 9U8P5

NEW ERA OF BRINKS 541J37

MISS BRINKS CADENCE 468G15

MS BRINKS NEW ERA 468P14  
R9685456

BRANGUS  
GE-EPDS

LEAD GUN OF BRINKS 222K14  
MISS BRINKS UPPERCUT 30L18  
MBR MR BB 44M2  
MISS 4L PATHFINDER 9U8M  
KO OF BRINKS 392F10  
MISS BRINKS MILKY WAY 541E4  
CADENCE OF BRINKS  
MISS BB NEW MACHO 468C

BW	WW	YW	REA	IMF	FT												
76 lbs. (96%)	658 lbs. (107%)	928 lbs. (104%)	12.19 (109%)	4.61 (106%)	0.28 (98%)												
CED	BW	WW	YW	M	TM	CEM	SC	REA	IMF	FT	Hfr	Prg	Stay	Cow	Wt	TI	FI
6.3	0.4	31	63	10	26	3.6	1.04	0.66	0.15	-0.053	3.26	0.78	4.88	3.17	0.66		

## 75 NEVER SURRENDER OF SALACOA 803D9

Born: 3/22/16 R10318183 Gen: 3 PHN: 803D9 Embryo Lot

MC BOULDER 889Z14  
R10229894

MC SOMETHING SPECIAL 129W14

MC MS EXTRAVAGANT 889X4

LOMBARDI OF BRINKS 468N10

MISS BRINKS KO 803J

MS BRINKS LOMBARDI 803S25  
R10056847

BRANGUS  
GE-EPDS

MC JETHRO 00S3  
MC MS LEAD GUN 129T12  
NICHOLS EXTRA H6  
MC MS MADISON 889J6  
BRIGHT SIDE OF BRINKS 789G5  
MISS BRINKS CADENCE 468G15  
KO OF BRINKS 392F10  
MISS BRINKS TRANSFORMER 803G

BW	WW	YW	REA	IMF	FT												
78 lbs. (100%)	698 lbs. (124%)	1220 lbs. (119%)	15.37 (121%)	4.94 (105%)	0.26 (115%)												
CED	BW	WW	YW	M	TM	CEM	SC	REA	IMF	FT	Hfr	Prg	Stay	Cow	Wt	TI	FI
4	3.8	55	104	12	39	3.8	0.77	0.79	0.14	-0.021	2.95	1.78	2.33	4.38	1.78		

**Lot 75C • 1 package of 4 Embryos**  
**803D9 X 23F9**

**ABF Ms Something Special 23F9**, The donor dam of these embryos is a Something Special daughter who calved first at 23 months of age and weaned that calf, a heifer, at 678 lbs. She also writes 11 EPD traits ranking in the breed's top 15% led by top 3% Terminal Index, 4% Fertility Index, 5% YW and Milk, 10% WW, REA and IMF with top 15% CED. The embryos are sired by **Never Surrender**, known for powerful, big ribbed and soggy progeny. With progeny sales over \$798,000, calculate the value offered here.

## 75 ABF MS SOMETHING SPECIAL 23F9

Born: 10/4/18 R10403243 Gen: 3 PHN: 23F9 Embryo Lot

MC SOMETHING SPECIAL 129W14  
R10154314

MC JETHRO 00S3

MC MS LEAD GUN 129T12

QCB CSONKA 740Z13

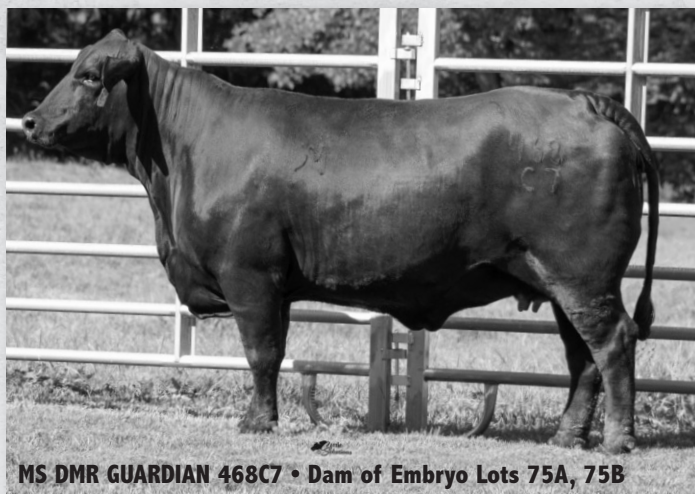
QCB MS NUFF SAID 23Z13

ABF MS CSONKA 740Z13 23B2  
R10277463

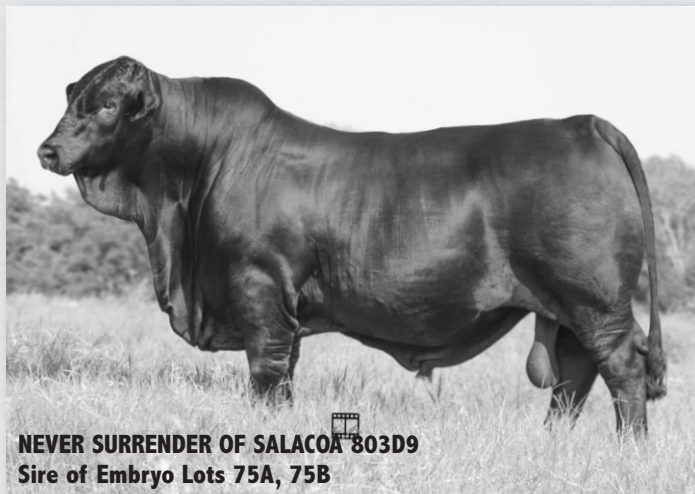
BRANGUS  
GE-EPDS

MC JOHN WAYNE 165N3  
MC MS STOUT 00M5  
LEAD GUN OF BRINKS 222K14  
MC MS JOHN WAYNE 129R7  
CSONKA OF BRINKS 30R4  
CCC MS 2M BRIGHT SIDE 740T13  
MC NUFF SAID 889T50  
SVF MS LEADGUN 23S85

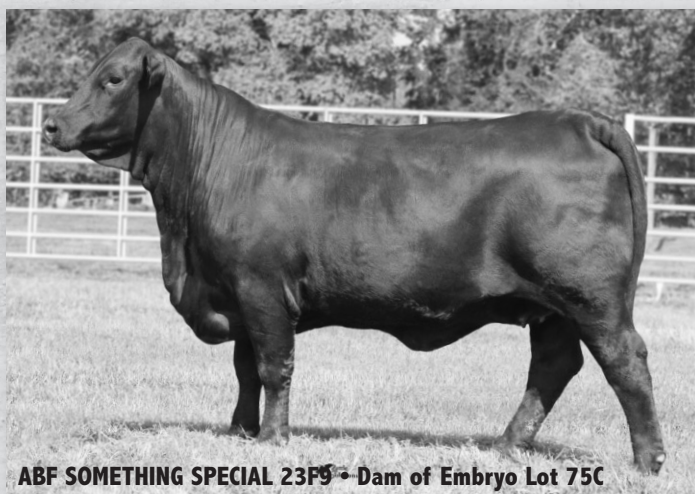
BW	WW	YW	REA	IMF	FT												
63 lbs. (91%)	569 lbs. (108%)	1030 lbs. (161%)	11.96 (108%)	6.27 (176%)	0.66 (315%)												
CED	BW	WW	YW	M	TM	CEM	SC	REA	IMF	FT	Hfr	Prg	Stay	Cow	Wt	TI	FI
7	0.7	38	80	17	36	2.9	0.8	0.65	0.25	-0.015	3.17	0.29	-3.24	3.91	1.93		



MS DMR GUARDIAN 468C7 • Dam of Embryo Lots 75A, 75B



NEVER SURRENDER OF SALACOA 803D9  
Sire of Embryo Lots 75A, 75B



ABF SOMETHING SPECIAL 23F9 • Dam of Embryo Lot 75C

# 76 Embryo Lot From Sunshine Acres and CJC Farms

## Lot 76 • 1 package of 6 Embryos 111F4 X 541E12

**Big Lake**, the sire of these embryos, is one of the hottest bulls in the breed siring the two \$20,000, half-interest females at the recent Elite Sale at Quail Valley. He posts top 1% WW and 2% YW with only +2 BW. **541E12** was our second pick at The Oaks Dispersal Sale. She is sired by Online (making her a paternal sister to Business Line) and out of Oaks Ms Csonka 541C1 (a full sister to our \$16,000 Oaks Ms Csonka 541B39 and the Earp brothers). She is a granddaughter of the iconic 541Y61 that sold to DMR for \$25,000 and has produced upwards of \$200,000 in direct sales. **541E12** has already proven her value, generating \$24,300 in revenue and we have retained two heifers and have 53 additional embryos currently frozen. This is an opportunity to get in on the front side of a tremendous young donor's genetics.



OAKS MS ONLINE 541E12 • Dam of Embryo Lot 76

## 76 OAKS MS ONLINE 541E12

Born: 3/2/17 R10346161 Gen: 5 PHN: 541E12 Embryo Lot

VF-OAKS ONLINE 918Y3  
R10193636

MC ONSTAR 924W4  
VOREL MS AFFIRMED 918U4

MC JETHRO 00S3  
MISS NMSU 924  
SUHN'S AFFIRMED 416N4  
VOREL MS BT 918R  
LEAD GUN OF BRINKS 222K14  
MISS BRINKS UPPERCUT 30L18  
CRC NORTH STAR 9U8W3  
MS BRINKS BRIGHT SIDE 541K28

OAKS MS CSONKA 541C1  
R10287158

BRANGUS  
GE-EPDS

CSONKA OF BRINKS 30R4  
CB MS NSR 541Y61

BW	WW	YW	REA	IMF	FT											
86 lbs. (109%)	600 lbs. (107%)	833 lbs. (107%)	9.05 (100%)	4.06 (100%)	0.24 (99%)											
CED	BW	WW	YW	M	TM	CEM	SC	REA	IMF	FT	Hfr	Prg	Stay	CowWt	TI	FI
4.6	2.9	37	72	2	21	3.9	1.26	0.46	0.13	-0.033	2.6	0.02	-4.67	3.02	1.2	



VF-OAKS ONLINE 918Y3 • Sire of Embryo Dam Lot 76

## 76 BWCC BIG LAKE 111F4

Born: 1/27/18 UB10399796 Gen: 2 PHN: 111F4 Embryo Lot

BWCC CROSS FIT 541B28  
R10293331

MC CROSSOVER 834Y  
MC MS LUCIA 541U

LAMBERT OF BRINKS 317R3  
MC MS GUNS 834W3  
LUKE OF BRINKS 784P14  
MC MS QUIET LADY 541S2  
S A V 707 RITO 9969  
S A V MADAME PRIDE 8180  
MC STRYKER 2S  
MC MS DATELINE 111L2

BWCC MS ROCK SOLID 111C6  
UB10305698

BRANGUS  
GE-EPDS

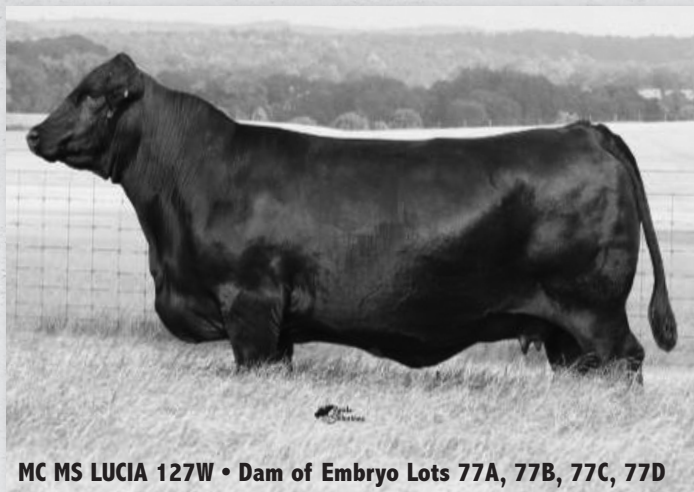
S A V ROCK SOLID 2251  
MC MS STRYKER 111U25

BW	WW	YW	REA	IMF	FT											
84 lbs. (100%)	830 lbs. (100%)	1302 lbs. (108%)	15.23 (106%)	6.18 (127%)	0.27 (101%)											
CED	BW	WW	YW	M	TM	CEM	SC	REA	IMF	FT	Hfr	Prg	Stay	CowWt	TI	FI
5.3	2	55	99	6	34	3.8	1.43	0.6	0.32	-0.05	1.89	0.97	1.4	4.62	0.27	



BWCC BIG LAKE 111F4 • Sire of Embryo Lot 76

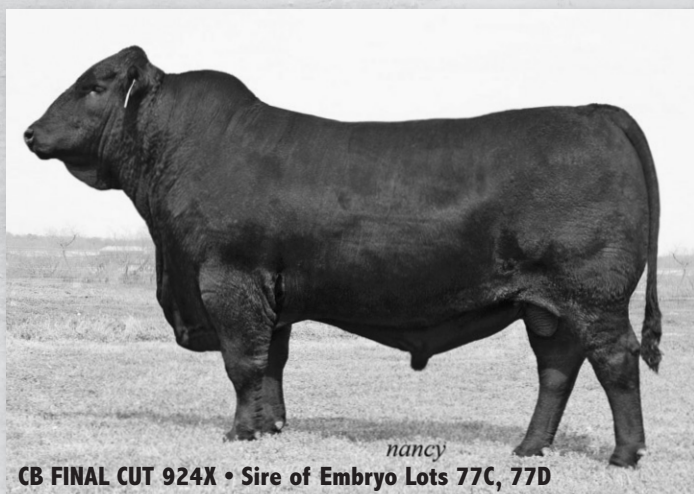
# 77 A, B, C, D Embryo Lot From Pear Lane Farm



MC MS LUCIA 127W • Dam of Embryo Lots 77A, 77B, 77C, 77D



BWCC MONUMENT 10D7 • Sire of Embryo Lots 77A, 77B



CB FINAL CUT 924X • Sire of Embryo Lots 77C, 77D

## Lot 77A • 1 package of 6 Embryos

## Lot 77B • 1 package of 6 Embryos

10D7 X 127W

The \$30,000 donor, **MC Ms Lucia 127W**, is one of the true power cows in the Brangus Breed. She is the dam of the \$40,000, MC Game Changer. She writes nine EPD traits ranking in the breed's top 35% or greater led by top 4% IMF, 10% YW and Terminal Index and top 15% WW. These embryos are sired by the \$50,000 **BWCC Monument 10D7**, one of Boulder's best sons. He records 14 EPD traits ranking in the breed's top 35% led by top 1% Fertility Index and 10% Terminal Index. He combines light birth, big growth and carcass. **Monument** sons and daughter have proven their value in sales across the country.

## 77 MC MS LUCIA 127W

Born: 3/6/09 R10154538 Gen: 4 PHN: 127W Embryo Lot

LUKE OF BRINKS 784P14  
R9694111

BLACKHAWK OF BRINKS 607M12  
MISS BRINKS BEST BET 784K10

TRANSFORMER OF BRINKS  
MISS BRINKS SUNDANCE 607K18  
BEST BET OF BRINKS 535H38  
MS BBCC HOTLINE 784D2  
BIG EASY OF BRINKS 283Z  
GLC MS CHAMP 4208/S  
PW YUVAL DUKE 282/4  
DRB MS REX 127/6

MC MS EASY MONEY 127K11  
R763709

EASY MONEY 08D2  
MC MS 282/4-127G

BRANGUS  
GE-EPDS

BW	WW	YW	REA	IMF	FT											
90 lbs. (116%)	721 lbs. (102%)	1047 lbs. (110%)	13.61 (112%)	6.75 (145%)	0.35 (111%)											
CED	BW	WW	YW	M	TM	CEM	SC	REA	IMF	FT	Hfr	Prg	Stay	CowWt	TI	FI
2.4	4.5	34	73	10	27	4.3	0.85	0.35	0.31	-0.048	1.46	-0.39	-5.89	3.37	0.12	

## 77 BWCC MONUMENT 10D7

Born: 3/13/16 UB10336225 Gen: 2 PHN: 10D7 Embryo Lot

MC BOULDER 889Z14  
R10229894

MC SOMETHING SPECIAL 129W14  
MC MS EXTRAVAGANT 889X4

MC JETHRO 00S3  
MC MS LEAD GUN 129T12  
NICHOLS EXTRA H6  
MC MS MADISON 889J6  
RITO 707 OF IDEAL 3407 7075  
S A V BLACKCAP MAY 4136  
MC NUFF SAID 889T50  
MS IRON FARM 301J5-10N3

BWCC MS RESOURCE 10A10  
UB10251868

S A V RESOURCE 1441  
BWCC MS NUFF SAID 10X

BRANGUS  
GE-EPDS

BW	WW	YW	REA	IMF	FT											
78 lbs. (95%)	782 lbs. (119%)	1308 lbs. (107%)	16.44 (111%)	6.08 (129%)	0.51 (138%)											
CED	BW	WW	YW	M	TM	CEM	SC	REA	IMF	FT	Hfr	Prg	Stay	CowWt	TI	FI
6.8	-1.1	37	67	10	28	4.1	1.3	0.7	0.38	0.004	3.61	2.38	-0.76	3.75	3.24	

## Lot 77C • 1 package of 6 Embryos

## Lot 77D • 1 package of 6 Embryos

924X X 127W

These embryos are sired by **CB Final Cut 924X**, the sire of Three D. He writes 10 EPD traits ranking in the breed's top 35% or greater led by top 2% WW and YW, 3% Terminal Index, 4% REA, 15% BW, 20% CED and top 35% IMF. Their dam is the \$30,000 donor **MC Ms Lucia 127W**, the dam of the \$40,000 Game Changer, and one of the true power cows in the Brangus breed.

## 77 CB FINAL CUT 924X

Born: 1/28/10 R10168212 Gen: 4 PHN: 924X Embryo Lot

MC REVELATION 129T  
R10081221

MC NEW DIRECTION 000 M24  
MB MS NIMITZ 129R

CONNELLY FREIGHTLINER  
MC MS 189/4-000J22  
NIMITZ OF BRINKS 75L12  
MB MS BIG CAT 129M3  
LEAD GUN OF BRINKS 222K14  
MC MS JOHN WAYNE 124N  
MC COOL HAND 52M6  
MISS NMSU 924

RBM MS GUNS 924T3  
R10080738

MC GUNS DONOVAN 124R  
RBM MS 52 COOL HAND 924R

BRANGUS  
GE-EPDS

BW	WW	YW	REA	IMF	FT											
79 lbs. (90%)		1289 lbs. (201%)	16.15 (147%)	4.66 (131%)	0.37 (177%)											
CED	BW	WW	YW	M	TM	CEM	SC	REA	IMF	FT	Hfr	Prg	Stay	CowWt	TI	FI
6.4	-1	51	96	5	31	4.2	0.41	0.76	0.11	-0.041	3.36	1.62	27.62	4.38	-0.47	



# 78 Embryo Lot East Ridge Cattle Company

## Lot 78 • 1 package of 6 Embryos 30D26 X 541G12

541G12 is a Beacon daughter whose donor dam, 541Z4, is a maternal sister to the \$42,000, 541P103 out of the prolific Brinks donor, 541M40. She paints a powerful EPD profile ranking in the breed's top 10% for WW and YW with top 5% SC and 15% REA and Terminal Index. These Embryos are sired by **Business Line**, who consistently adds pounds and profile to his sons and daughters. He records EPDs ranking in the breed's top 35% CED, 3% REA, 10% WW and Terminal Index with top 15% YW and IMF.



SA/ ERC MS BEACON 541G12 • Dam of Embryo Lot 78

## 78 SA/ ERC MS BEACON 541G12

Born: 1/18/19 R10418571 Gen: 5 PHN: 541G12 Embryo Lot

SUHN'S MAJESTIK BEACON 30C  
UB10292617

TJM THREE D 302A

CB FINAL CUT 924X  
OAKS MS PATTON 302X3

SCC MISS MYTTY 30Z5

MYTTY IN FOCUS  
SUHN'S MS DUKE 30M  
CSOKA OF BRINKS 30R4  
MS BRINKS ALI 30P26  
TRANSFORMER OF BRINKS  
MISS BRINKS KO 541J33

MS PATTON 541Z4  
R10238731

PATTON OF BRINKS 30T22

MS BRINKS TRANSFORMER 541M40

BRANGUS  
GE-EPDs

BW	WW	YW	REA	IMF	FT										
78 lbs. (100%)	575 lbs. (99%)	976 lbs. (100%)	12.48 (100%)	4.90 (100%)	0.44 (100%)										
CED	BW	WW	YW	M	TM	CEM	SC	REA	IMF	FT	Hfr Prg	Stay	CowWt	TI	FI
3.0	3.1	38	75	4	23	2.8	1.02	0.55	0.06	-0.039	1.67	0.62	3.52	3.05	0.09



SUHN'S MAJESTIK BEACON 30C • Sire of Embryo Dam Lot 78

## 78 SUHN'S BUSINESS LINE 30D26

Born: 3/6/16 R10327046 Gen: 5 PHN: 30D26 Embryo Lot

VF-OAKS ONLINE 918Y3  
R10193636

MC ONSTAR 924W4

MC JETHRO 00S3  
MISS NMSU 924

VOREL MS AFFIRMED 918U4

SUHN'S AFFIRMED 416N4  
VOREL MS BT 918R  
WR DUKE 661S8  
MISS 4L BEST BET 9U8P5  
PATTON OF BRINKS 30T22  
SUHN'S MS DUKE 30M

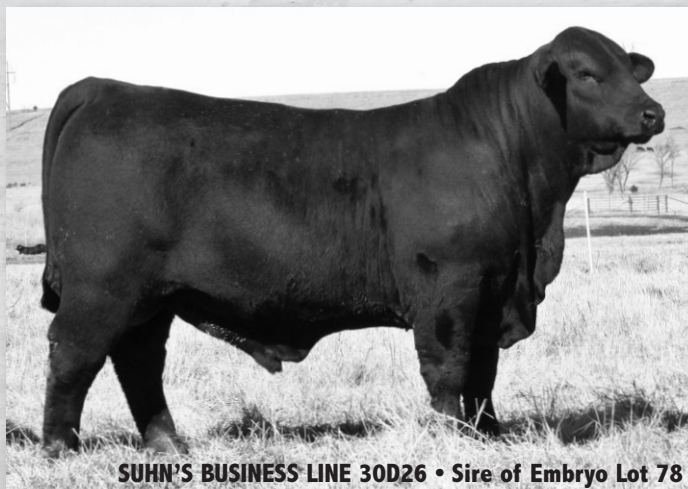
SUHN'S MISS NORTH STAR 30A  
R10242826

CRC NORTH STAR 9U8W3

SUHN'S MISS PATTON 30X5

BRANGUS  
GE-EPDs

BW	WW	YW	REA	IMF	FT										
82 lbs. (100%)	740 lbs. (107%)	1368 lbs. (109%)	15.61 (110%)	4.41 (99%)	0.30 (96%)										
CED	BW	WW	YW	M	TM	CEM	SC	REA	IMF	FT	Hfr Prg	Stay	CowWt	TI	FI
5.4	0.3	39	72	3	22	3.5	1.84	0.80	0.25	-0.040	2.56	0.42	-0.42	3.69	0.86



SUHN'S BUSINESS LINE 30D26 • Sire of Embryo Lot 78

# 79 A, B, C Embryo Lot From Spur S and T3 Brangus



MS BRINKS ALI 803M • Dam of Embryo Lots 79A, 79B



NEVER SURRENDER

## Lot 79A • 1 package of 5 Embryos 803D9 X 803M

803M is the \$50,000 dam of Griese of Brinks. Born in 2002 she still ranks in the breed's top 25% Milk and 35% REA with top 15% BW and 25% CED. She is moderate in her kind, clean made and big ribbed. She is a perfect match for the powerful yet moderate and loose made and \$50,000 **Never Surrender**. He records top 1% WW and YW, 3% REA and Term. Index, 10% Fert. Index, 20% Milk and SC and top 30% IMF. His progeny sales have totaled over \$798,584 and averaging over \$5,000. Powerful tabulations from the sire side and complimentary values from 803M make these embryos highly intriguing.

## 79 MS BRINKS ALI 803M

Born: 1/26/2002 R811116 Gen: 3 PHN: 803M Embryo Lot

ALI OF BRINKS 209J2  
R738436

KO OF BRINKS 392F10

MISS BRINKS TROOPER 209G

TRANSFORMER OF BRINKS

WB MS RITO 2100-803Y23

MISS BRINKS TRANSFORMER 803G  
R678968

BRANGUS  
GE-EPDS

FOREMAN OF BRINKS 99C5  
MISS BB NEW NEWSMAKER 392B3  
TROOPER OF BRINKS  
MISS BB NEW KANSAS JACK 209C  
LINEMAN OF BRINKS 881A7  
MISS BB NEW EXACTO 784W  
RITO 2100 GDAR  
MS CLAYDESTA 801P2-803T14

## 79 NEVER SURRENDER OF SALACOA 803D9

Born: 3/22/16 R10318183 Gen: 3 PHN: 803D9 Embryo Lot

MC BOULDER 889Z14  
R10229894

MC SOMETHING SPECIAL 129W14

MC MS EXTRAVAGANT 889X4

LOMBARDI OF BRINKS 468N10

MISS BRINKS KO 803J

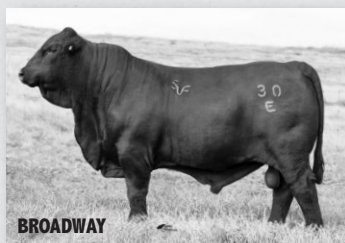
MS BRINKS LOMBARDI 803S25  
R10056847

BRANGUS  
GE-EPDS

MC JETHRO 00S3  
MC MS LEAD GUN 129T12  
NICHOLS EXTRA H6  
MC MS MADISON 889J6  
BRIGHT SIDE OF BRINKS 789G5  
MISS BRINKS CADENCE 468G15  
KO OF BRINKS 392F10  
MISS BRINKS TRANSFORMER 803G

BW	WW	YW	REA	IMF	FT												
70 lbs.	569 lbs. (95%)		10.14	6.14	0.13												
CED	BW	WW	YW	M	TM	CEM	SC	REA	IMF	FT	Hfr	Prg	Stay	Cow	Wt	TI	FI
5.9	-1	10	12	12	17	3.9	-0.22	0.38	0.05	-0.062	-0.27	1.25	-12.37	1.14	-0.16		

BW	WW	YW	REA	IMF	FT												
78 lbs. (100%)	698 lbs. (124%)	1220 lbs. (119%)	15.37 (121%)	4.94 (105%)	0.26 (115%)												
CED	BW	WW	YW	M	TM	CEM	SC	REA	IMF	FT	Hfr	Prg	Stay	Cow	Wt	TI	FI
4	3.8	55	104	12	39	3.8	0.77	0.79	0.14	-0.021	2.95	1.78	2.33	4.38	1.78		

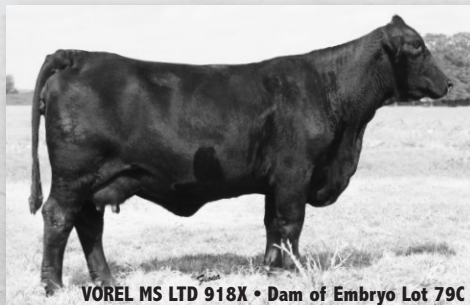


BROADWAY



FOUNDATION

## Lot 79C-1 package of 6 Embryos 331Z28 X 918X



VOREL MS LTD 918X • Dam of Embryo Lot 79C

918X from Vorel Farms remains one of the most powerful daughters of LTD and writes EPDs ranking in the breed's top 10% WW and YW, 20% Terminal Index and top 35% Milk. **Foundation** is a proven sire of power and boasts EPDs ranking in the breed's top 10% WW, 20% YW, 25% REA and top 35% Terminal Index.

## Lot 79B • 1 package of 3 Embryos 30E X 803M

These embryos are again out of 803M, the \$50,000 dam of Griese. They are sired by the long sided, deep made and \$67,500 **Broadway** who writes 11 EPD traits ranking in the breed's top 35% or greater led by top 15% WW, IMF and Terminal Index, 20% YW and REA, 30% Fertility Index and top 35% BW. A highly complimentary mating with a world of potential earning power.

## 79 T3 BROADWAY 30E

Born: 9/4/17 R10367402 Gen: 7 PHN: 30E Embryo Lot

HOLLYWOOD OF SALACOA 23A53  
R10251840

NEW VISION OF SALACOA 209Y2

MS SVF PATTON 23Y66

ATLANTA OF SALACOA 488Z

MS BRINKS UNITAS 30T94

MS SALACOA ATLANTA 30B5  
R10272021

BRANGUS  
GE-EPDS

LAMBERT OF BRINKS 317R3  
MS BRINKS BRIGHT SIDE 209L11  
PATTON OF BRINKS 30T22  
SVF MS 23M28  
LAMBERT OF BRINKS 317R3  
MS SVF CADENCE 488X11  
UNITAS OF BRINKS 361R6  
MS BRINKS ALI 30P25

BW	WW	YW	REA	IMF	FT												
75 lbs. (100%)	832 lbs. (100%)	1179 lbs. (100%)	13.88 (100%)	4.28 (100%)	0.22 (100%)												
CED	BW	WW	YW	M	TM	CEM	SC	REA	IMF	FT	Hfr	Prg	Stay	Cow	Wt	TI	FI
4.9	-0.2	37	68	-2	16	4.2	0.74	0.55	0.26	-0.044	1.44	-0.33	-16.12	3.41	1.03		

## 79 VOREL MS LTD 918X

Born: 1/22/2010 R10169047 Gen: 6 PHN: 918X Embryo Lot

LTD OF BRINKS 415T28  
R10082892

CSOKA OF BRINKS 30R4

MS BRINKS BRIGHT SIDE 415P5

BURTIN'S TRANSFORMER 803G3

SUHN'S MS NEWSMAN 918M18

VOREL MS BT 918R  
R10012823

BRANGUS  
GE-EPDS

LEAD GUN OF BRINKS 222K14  
MISS BRINKS UPPERCUT 30L18  
BRIGHT SIDE OF BRINKS 789G5  
MISS BB NEW BIG EASY 415E17  
TRANSFORMER OF BRINKS  
BURTIN'S MISS MILKY WAY 803E  
MC NEWS MAN 81H13  
SUHN'S MISS CADENCE 918J12

BW	WW	YW	REA	IMF	FT												
80 lbs. (113%)	624 lbs. (99%)	1152 lbs. (111%)	11.62 (99%)	5.7 (104%)	0.53 (102%)												
CED	BW	WW	YW	M	TM	CEM	SC	REA	IMF	FT	Hfr	Prg	Stay	Cow	Wt	TI	FI
2.1	3.7	36	73	11	29	2.6	0.88	0.35	0.04	-0.051	0.81	0.02	-15.49	2.89	0.56		

## 79 SUHN'S FOUNDATION 331Z28

Born: 2/26/12 R10227112 Gen: 5 PHN: 331Z28 Embryo Lot

GR SWIFT 209W3  
R10143304

LAMBERT OF BRINKS 317R3

MS BRINKS BRIGHT SIDE 209L11

BURTIN'S TRANSFORMER 803G3

SUHN'S MS CADENCE 331M3

SUHN'S MISS BT 331S43  
R10084893

BRANGUS  
GE-EPDS

LEAD GUN OF BRINKS 222K14  
MS BRINKS GOOD FORTUNE 317M  
BRIGHT SIDE OF BRINKS 789G5  
MISS BRINKS NEWSDAY 209G9  
TRANSFORMER OF BRINKS  
BURTIN'S MISS MILKY WAY 803E  
CADENCE OF BRINKS  
SUHN'S MISS PROMISE 331J12

BW	WW	YW	REA	IMF	FT												
96 lbs. (108%)	760 lbs. (106%)	1301 lbs. (104%)	16.14 (107%)	4.58 (97%)	0.42 (129%)												
CED	BW	WW	YW	M	TM	CEM	SC	REA	IMF	FT	Hfr	Prg	Stay	Cow	Wt	TI	FI
3.8	3.3	40	68	9	29	4.4	0.42	0.5	-0.06	-0.037	0.89	0.75	0.52	2.58	-0.05		

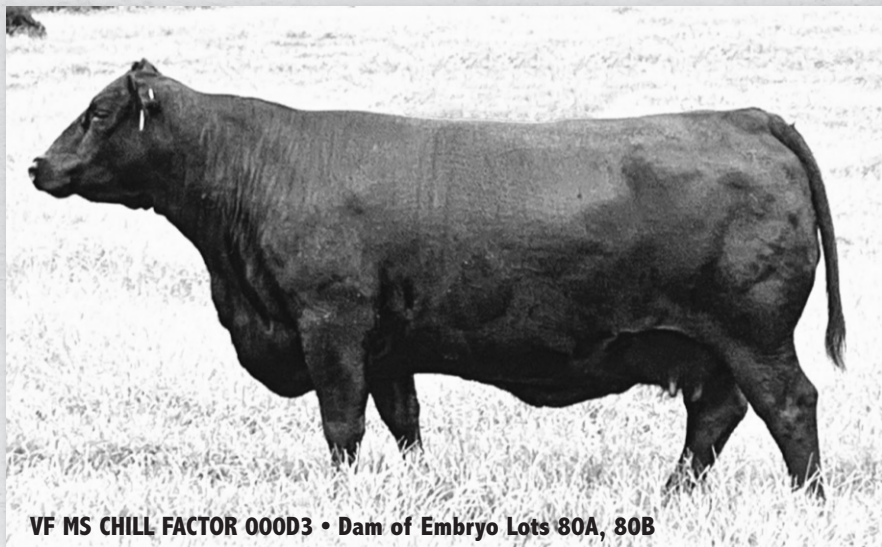
# 80 A, B Embryo Lot From Vanna Farms

**Lot 80A • 1 package of 4 Embryos**

**Lot 80B • 1 package of 4 Embryos**

**30G16 X 000D3**

From Vanna Farm's favorite 000 tribe that starts with the granddam MC Ms Quiet Lady 000S50 that has done so much for the Brangus breed and Vanna Farms. These embryos are the first offered out of Vanna Farm's favorite young donor **VF Ms Chill Factor 000D3** and will be maternal sibs to the two Broadway heifers we are selling. Their dam records EPDs ranking in the breed's top 15% for an incredible 11 traits including top 1% IMF and Terminal Index and top 2% WW and YW. **Empower** contributes nicely to this mating from both a statistical and phenotype point of view. She records 11 complimentary EPD traits ranking in the breed's top 25%.



**VF MS CHILL FACTOR 000D3 • Dam of Embryo Lots 80A, 80B**

## 80 VF MS CHILL FACTOR 000D3

Born: 1/23/16 UB10322496 Gen: 1 PHN: 000D3 Embryo Lot

S A V CHILL FACTOR 1418  
EA17016551

RITO 707 OF IDEAL 3407 7075

R R RITO 707  
IDEAL 3407 OF 1418 076  
S A V 8180 TRAVELER 004  
S A V MAY 2397

VF MS GAME CHANGER 000B4  
R10271391

BRANGUS  
GE-EPDS

MC GAME CHANGER 127Y42

MC SOMETHING SPECIAL 129W14  
MC MS LUCIA 127W  
MC JOHN WAYNE 661N13  
MC MS FOREFRONT 000N2

MC MS QUIET LADY 000S50



**MC QUIET LADY 000S50**

BW	WW	YW	REA	IMF	FT											
78 lbs. (98%)	682 lbs. (103%)	900 lbs. (112%)	9.93 (105%)	5.15 (110%)	0.3 (127%)											
CED	BW	WW	YW	M	TM	CEM	SC	REA	IMF	FT	Hfr	Prg	Stay	CowWt	TI	FI
4.7	2.1	45	86	8	31	4.7	0.93	0.56	0.45	-0.024	3.18	2.12	6.29	4.35	1.67	

## 80 QVF PR EMPOWER 30G16

Born: 3/16/19 R10412716 Gen: 4 PHN: 30G16 Embryo Lot

NEVER SURRENDER OF SALACOA 803D9  
R10318183

MC BOULDER 889Z14

MC SOMETHING SPECIAL 129W14  
MC MS EXTRAVAGANT 889X4  
LOMBARDI OF BRINKS 468N10  
MISS BRINKS KO 803J  
CB FINAL CUT 924X  
OAKS MS PATTON 302X3  
ATLANTA OF SALACOA 488Z  
MS BRINKS UNITAS 30794

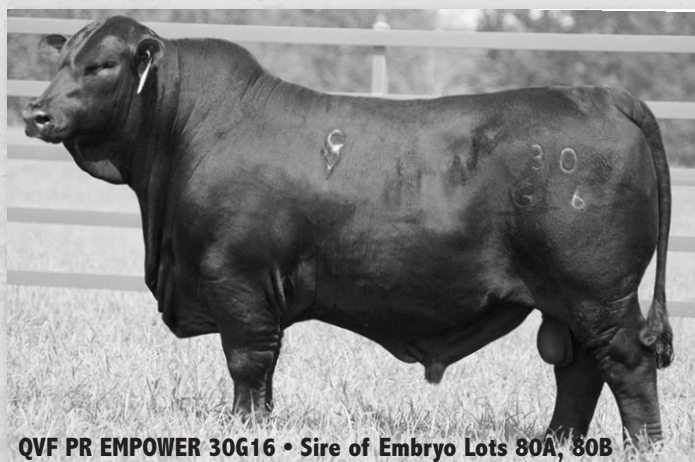
MS BRINKS LOMBARDI 803S25

TJM THREE D 302A

MS SALACOA ATLANTA 30B5

T3 MS THREE D 30D  
R10337797

BRANGUS  
GE-EPDS



**QVF PR EMPOWER 30G16 • Sire of Embryo Lots 80A, 80B**

BW	WW	YW	REA	IMF	FT											
78 lbs. (100%)	559 lbs. (100%)	1348 lbs. (100%)	15.92 (100%)	5.35 (100%)	0.33 (100%)											
CED	BW	WW	YW	M	TM	CEM	SC	REA	IMF	FT	Hfr	Prg	Stay	CowWt	TI	FI
5.5	1.6	45	84	6	28	4.4	0.79	0.68	0.27	-0.029	2.41	1.13	1.26	3.99	1.13	

# 81 Semen Lot From Vanna Farms and Whitley Cattle Co.

Here is an exciting young herd sire is the most recent addition to our herd bull battery. He is the \$35,000 **BWCC Black Top 192G22** and the second high selling bull at the fall Blackwater sale. Thick made and impressively designed he is blessed with a perfectly blended EPD profile ranking in the breed's top 35% or greater for 10 traits led by top 5% WW and Terminal Index, 10% YW, REA and IMF, 25% CED and top 35% Milk. His blend of economically relevant traits make him can't miss in the genetics world of Brangus. **Selling 10 straws of semen in packages of 5.**



## 81 BWCC BLACK TOP 192G22

Born: 9/24/2019 R10444674 Gen: 1 PHN: 192G22 Semen

BWCC MILE MARKER 889E32  
R10359796

BWCC CROSS FIT 541B28

MC CROSSOVER 834Y  
MC MS LUCIA 541U  
MC NUFF SAID 889T50  
MC MS 5175 BANDO 889P12  
MC ELEGIDO 924W6  
BWCC MS LEAD GUN 889W26  
S A V BRAND NAME 9115  
CCC MS NEWSMAKER 192J12

BWCC MS NUFF SAID 889Z24

BWCC CRUISE 889Z28

BWCC MS BRAND NAME 192Z46

BWCC MS CRUISE 192B62  
UB10293158

BRANGUS  
GE-EPDS

BW	WW	YW	REA	IMF	FT										
98 lbs. (100%)	847 lbs. (100%)	1207 lbs. (100%)	15.53 (100%)	5.75 (100%)	0.44 (100%)										
CED	BW	WW	YW	M	TM	CEM	SC	REA	IMF	FT	Hfr Prg	Stay	Cow Wt	TI	FI
6.1	1.5	44	84	10	32	2.8	0.55	0.71	0.31	-0.026	2.7	1.42	0.46	4.13	1.53

# 82 Semen Lot Hartness Brangus

**BWCC Chiseled 468G58** is a Cross Fit son and his granddam is the great 468Y14 donor. Many have identified her as Rock Star's greatest daughter. His dam is BWCC Statement 468B32, a full sister sold to Far Niente for \$13,000 and a maternal sib for \$13,500 in last June's Quail Valley Farms Sale. He writes six traits ranking in the breed's top 105 paced by top 2% WW, 5% YW, 4% SC, 10% IMF and Terminal Index with top 15% REA and top 35% Fertility Index. He is one of Cross Fit's finest sons with the maternal power to back him up. **Selling 10 straws of semen in packages of 5.**



## 82 BWCC CHISELED 468G58

Born: 9/27/2019 R10434380 Gen: 5 PHN: 468G58 Semen

BWCC CROSS FIT 541B28  
R10293331

MC CROSSOVER 834Y

LAMBERT OF BRINKS 317R3  
MC MS GUNS 834W3  
LUKE OF BRINKS 784P14  
MC MS QUIET LADY 541S2  
MC REDEMPTION 192W22  
MS IRON FARM 2K4 036U  
MC ROCK STAR 924U6  
MISS BRINKS CADENCE 468G15

MC MS LUCIA 541U

BWCC STATEMENT 036Z

BWCC MS ROCK STAR 468Y14

BWCC MS STATEMENT 468B32  
R10293362

BRANGUS  
GE-EPDS

BW	WW	YW	REA	IMF	FT										
82 lbs. (100%)	811 lbs. (100%)	1247 lbs. (100%)	15.5 (100%)	5.84 (100%)	0.46 (100%)										
CED	BW	WW	YW	M	TM	CEM	SC	REA	IMF	FT	Hfr Prg	Stay	Cow Wt	TI	FI
4.5	3.3	50	88	6	31	3.4	1.16	0.61	0.31	-0.043	2.37	0.69	-3.1	4.09	0.98



# COMMERCIAL FEMALE OFFERING

We are proud of this set of Commercial females. All females selling are sired by or exposed to an Addison Brangus Bull. In the future, anyone buying an Addison Brangus Farms bull will be eligible to participate in the commercial or registered section of these future sales. As always we strive to add value for your purchases.

**2 Open Commercial Heifers** **Consigned by Addison Brangus** **Lots 101, 102**

Multigeneration Brangus heifers sired by ABF Final Cut 134F4, R10403235. Tag numbers: 101, 102

**14 Spring Bred Commercial Heifers** **Consigned by Addison Brangus** **Lots 103-116**

Multigeneration Brangus and Super Baldie Brangus heifers. Tag numbers: 103-116  
 AI'd 5/13/21 to ABF Black Granite 23D5, R10333005. Pasture exposure to ABF Chattooga 568H2, R10444847 from 5/31/21 to 9/1/21.

**24 Spring Bred Commercial Heifers** **Consigned by John Norris** **Lots 117-140**

Sim/Angus and Brangus heifers. Tag numbers: 117-140  
 Pasture exposed to ABF Rudder 23F3, R10383285 from 3/1/21 to 9/1/21.

**8 Spring Bred Commercial Heifers** **Consigned by Jackson Farms & HH Brangus** **Lots 141-148**

Super Baldies Brangus heifers. Tag numbers: 141-148  
 AI'd 6/14/21 to ABF Black Granite 23D5, R10333005. Pasture exposed to JRT Empire 624, R10441687 from 6/26/21 to sale date.

**4 Spring Bred Commercial Heifers** **Consigned by Tucker Farms** **Lots 149-152**

Commercial Brangus heifers sired by ABF Catawba Warrior 174C, R10302131. Tag numbers: 149-152  
 AI'd 6/1/21 to ABF Black Granite 23D5, R10333005. Pasture exposed to Debter Hereford bulls from 6/2/21 to 9/15/21.

**2 Spring Bred Commercial Heifers** **Consigned by Tucker Farms** **Lots 153, 154**

Super Baldie Brangus heifers sired by ABF Catawba Warrior 174C, R10302131. Tag numbers: 153, 154  
 AI'd 6/1/21 to ABF Black Granite 23D5, R10333005. Pasture exposed to Debter Hereford bulls from 6/2/21 to 9/15/21.

**86 Spring Bred Commercial Heifers** **Consigned by Stinson Brangus** **Lots 155-240**

Commercial Hereford x Angus, Brangus and Super Baldy heifers. Tag numbers: 155-240  
 Pasture exposed to ABF Black Granite C102G and other black low birth weight bulls from 3/12/21 to 10/1/21.

## Semen Available from Addison Brangus Farms



Monument

Contact  
 Wayne Addison at  
 (205) 412-5356  
 for semen on these two  
 ABF AI Sires!



Black Granite

### ABF BLACKSTONE 23G2



Born: 2/13/19 R10410461 Gen: 4 BWCC Monument 10D7 x QCB Ms Nuff Said 23Z12

CED	BW	WW	YW	M	TM	CEM	SC	REA	IMF	FT	Hfr Prg	Stay	Cow Wt	TI	FI
7.5	-0.6	37	70	9	28	3.3	0.62	1.07	0.16	-0.016	3.67	1.74	-3.79	3.66	2.79

### ABF BLACK GRANITE 23D5



Born: 9/4/16 R10333005 Gen: 1 MC Granite 834B x SVF Ms 535P9

CED	BW	WW	YW	M	TM	CEM	SC	REA	IMF	FT	Hfr Prg	Stay	Cow Wt	TI	FI
5.1	0.1	35	70	8	26	3.4	0.49	0.53	0.07	-0.019	2.05	1.53	-3.13	3.12	1.63

# TERMS AND CONDITIONS

## BIDDING

Each animal will be sold to the highest bidder without reserve. The auctioneer will settle any disputes as to bids and his decision on such matters shall be final.

## TERMS

Each animal becomes the risk of the purchaser as soon as sold, but it shall be the obligation of the seller to see that animals are fed and cared for until loaded for shipment or until the expiration of 48 hours after the sale, whichever occurs sooner. After 48 hours a maintenance fee of \$5 per day will be assessed until pickup, unless AMS arranges shipment.

## SIGHT UNSEEN PURCHASES

Buyers may purchase bulls through American Marketing Service or Wayne Addison personnel at auction without viewing the cattle. For sight unseen purchases, the buyer has the right of inspection at the time of delivery. If the animal is deemed unsatisfactory, it may be reloaded on the delivery truck and returned to the farm of the seller at no obligation to the buyer. All transportation expenses will be the responsibility of the seller. If the animal is deemed unsatisfactory within one week of the purchase, the buyer may at their expense, return the animal to the farm of the seller for a full refund of the purchase price.

## CERTIFICATE OF REGISTRY

A transferred certificate of registry will be furnished to the purchaser for each registered animal once proper settlement has been made.

## HEALTH

Health papers suitable for interstate shipment will be furnished on all animals.

## GENETIC CONDITIONS

Unless otherwise noted, all cattle selling are DDF either through testing or pedigree. Any DDC or DDPC cattle are so noted.

## ANNOUNCEMENTS

Any changes from the information of any kind in this catalog will be provided in a sale day supplement sheet or announced from the auction block and such information shall take precedence over cataloged information.

## BREEDING GUARANTEE

1. All animals are guaranteed to be breeders with the exception of: a) calves under 12 months of age; b) animals shown by purchaser after sale in which the guarantee (if any) shall be between the seller and the buyer; c) injury or disease occurring after the sale; d) gross negligence or willful misconduct on the part of the purchaser; e) death by any reason.
2. Any bull which settles cows by natural service and passes a fertility test made by competent veterinarians, mutually agreed upon by the buyer and seller, during any six month period of trial (provided for in paragraph 2 of the section of these sales terms and conditions entitled "Options and Privileges of Return or Adjustment") shall be considered a breeder. All partial interest bulls are guaranteed to produce freezable quality semen.
3. Safe in calf females have been examined by competent personnel and are so guaranteed.

4. Exposed females have been exposed but are not guaranteed to be safe in calf.

5. Open females have not been served and are so guaranteed.

6. Donor Females. a) A female is not guaranteed to be a breeder after the date of the sale when that female is to be used or attempted to be used, in an embryo transfer program, unless by separate agreement between the buyer and seller. b) Embryo transfer guarantee. Even though it is possible some of the female lots have worked successfully in our embryo transfer program in the past, and should in the future, there is no guarantee or warranty on future embryo production of any lot. Flush records are available upon request.

## PREGNANCY DETERMINATION

The registered females in this sale noted safe in calf have been determined pregnant by physical palpation or ultrasound technology. Our best estimate of service sire will be given in the case of the females with both an A.I. sire and a natural breeding sire. Keep in mind this is our best estimate.

## OPTIONS AND PRIVILEGES OF RETURN OR ADJUSTMENT

1. All claims for adjustment or refund must be made in writing within six months of the sale date.
2. In the event an animal is claimed to be a non-breeder, the animal may be returned to the farm of the breeder if in good condition and complying with the health requirements of their state. The seller shall be entitled to a six month trial following the return of the animal in which to prove that the animal is a breeder. If at the end of six months the seller is unable to prove the animal is a breeder, the seller shall at the option of the buyer replace the animal with another of equal value or issue a credit for the initial selling price. If the seller proves the animal to be a breeder, it shall be the obligation of the purchaser to take delivery of the animal and pay all expenses incurred for transportation.
3. If an animal is sold and at a later date proves not to be eligible for registration under association rules, the seller shall be obligated to make a satisfactory adjustment on the purchase price to the buyer, refund the purchase price or issue a credit for the initial selling price upon the return of the animal to the farm of the seller.
4. If an animal is sold and through DNA is proven to have incorrect parentage as represented by the certificate of registration, and for which the parentage can be determined, the seller shall be obligated to make a satisfactory adjustment on the purchase price to the buyer, refund the purchase price or issue a credit for the initial selling price upon the return of the animal to the farm of the seller.

## RIGHTS AND OBLIGATIONS

1. The above terms and conditions of sale shall constitute a contract between the buyer and seller of each animal and shall be equally binding on both. Other than the guarantees and warranties stated above, no other warranties or guarantees are expressed or implied. Each sale or resale of an animal constitutes a separate transaction.
2. American Marketing Service or any other person connected with the management of the sale assumes no liability, legal or otherwise.



# THE TAG TELLS IT ALL **BRANGUS<sup>®</sup> VIGOR**

**BRANGUS VIGOR** - A PROCESS VERIFIED PROGRAM TO DIFFERENTIATE GENUINE BRANGUS SIRE FEEDER CATTLE FROM GENERIC INDICUS CROSSBREDS  
**BRANGUS VIGOR** WILL DRIVE VALUE FOR BRANGUS SIRE FEEDER CALVES AND BUILD BUYER CONFIDENCE IN THE GROWYARD AND FEEDYARD SECTORS

## *BRANGUS VIGOR COMPONENTS*

SOURCE AND AGE VERIFIED  
840 EID TAG & BRANGUS VIGOR TAG  
BRANGUS SIRE  
HEALTH PROTOCOLS  
BQA CERTIFICATION

[WWW.GOBRANGUS.COM](http://WWW.GOBRANGUS.COM)

# 5000

**BRANGUS VIGOR**

## DEMAND A PREMIUM

To enroll your Brangus-sired feeder cattle in the Brangus Vigor program contact:  
Darrell Wilkes, Ph.D. [dwilkes@gobrangus.com](mailto:dwilkes@gobrangus.com) 210-696-8231

INTERNATIONAL  
**BRANGUS**  
BREEDERS ASSOCIATION





**ADDISON BRANGUS FARMS**  
Wayne & Leisa Addison  
1043 County Highway 130  
Winfield, Alabama 35594  
AddisonBrangusFarms.com

Presorted  
First Class  
US Postage  
**PAID**  
SlateGroup

**DVAuction**  
*Broadcasting Real-Time Auctions*

ADDISON BRANGUS FARMS AND FRIENDS  
**PERFORMANCE SALE**

**Saturday, October 9, 2021 ♦ 11 am CST**  
Cullman Stockyard ♦ Cullman, Alabama

